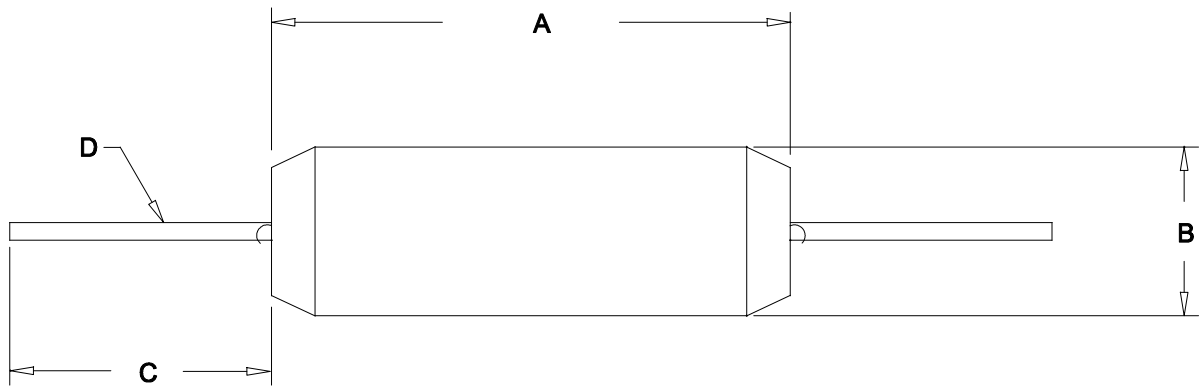


INDUCTANCE: 24 $\mu$ H  $\pm$ 10%  
 TEST FREQUENCY: 2.5MHz  
 SELF-RESONANT FREQUENCY: 25MHz  
 DCR: 0.34 $\Omega$  MAX.  
 I DC: 800mA MAX.  
 Q: 65 MIN.



| DIMENSIONS: |                    |
|-------------|--------------------|
| A           | 0.875" $\pm$ 0.150 |
| B           | 0.290" $\pm$ 0.125 |
| C           | 1.500" $\pm$ 0.125 |
| D           | 0.032" $\pm$ 0.005 |



**ELECTRONIC DIVISION**  
 52 RANKIN PLACE,  
 WATERLOO, ONTARIO, N2J 3Z5  
 PH # (519) 886-6181  
 FAX # (519) 886-9540

TITLE

R.F. CHOKES

| NO | DATE     | REVISION                        | DWG. BY        |
|----|----------|---------------------------------|----------------|
| 0  | 12/22/16 | RELEASED. C.I.                  | C. ILIE        |
| 1  | 05/29/17 | IND. TOLERANCE WAS 5%. C.I.     | DATE           |
| 2  | 06/05/18 | LENGTH TOLERANCE WAS 0.125"D.H. | 12/22/16       |
|    |          |                                 | DIM IN( )MM( ) |

1532C