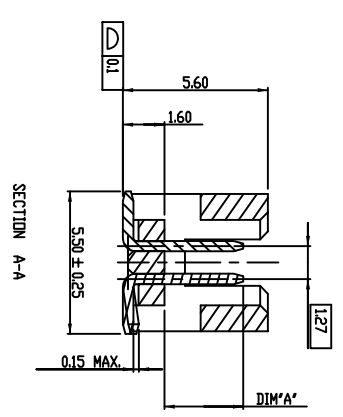
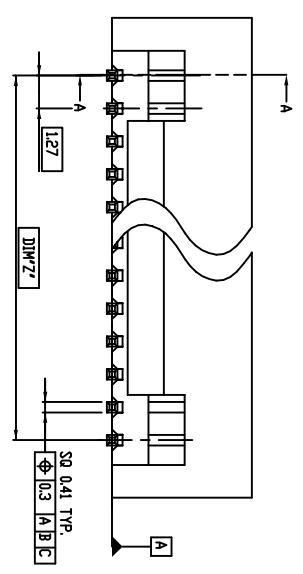
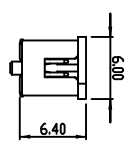
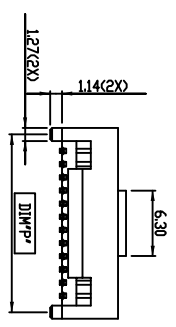
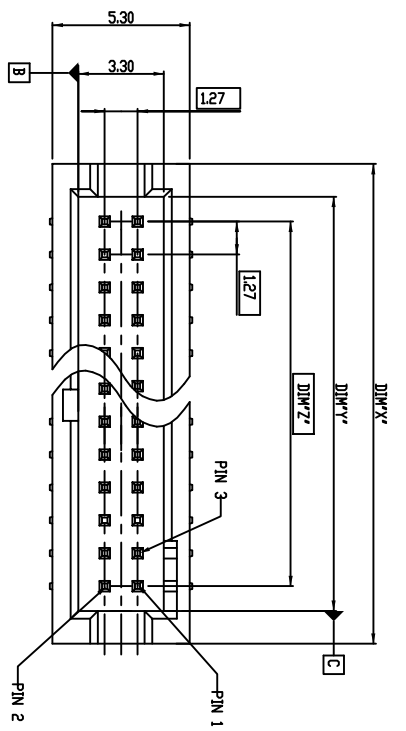


PART NO.
20021221

1 2 3 4



NOTES:
1.MATERIAL:
HOUSING: HIGH TEMPERATURE THERMOPLASTIC: UL94-V0 BLACK
TERMINAL: COPPER ALLOY

2.ONLY SHOW THE FEATURE OF THE ABSENT PIN,THE OTHER SPEC IS THE SAME AS THE FULL PIN PRODUCT.
3.THE HOUSING WILL WITHSTAND EXPOSURE TO 260°C PEAK TEMPERATURE FOR 10 SECONDS IN A CONVECTION INFRARED OR VAPOR PHASE REFLOW OVEN.
4.THIS PRODUCT MEETS EUROPEAN UNION DIRECTIVES AND OTHER COUNTRY REGULATIONS AS DESCRIBED IN GS-22-008.
5.PRODUCT SPEC: GS-12-629
6.PACKAGE SPEC: GS-14-1420
7.THE METAL CAP IS OPTION AS CUSTOMER REQUIREMENT.

spec ref	tolerance std	TOLERANCES UNLESS OTHERWISE SPECIFIED		dr	ZK HU	2012-8-7	projection	MM	size	A3	scale	5,000
	ISD 1101			eng	ZK HU	2012-8-7						
surface	ISD 406	linear	0.X	±0.30	chv	RICK BIAN	2012-8-7	product family	rel level	pen no	ELX-N-14376	RELEASED
ISD 1302		angular	0.XXX	±0.10	appr	RICK BIAN	2012-8-7					
				±2°	www.fcj.com		MINITEK 127 SHROUDED HDR		Product - Customer Drw		20021221	rev
					cat							K

1 2 3 4

Copyright FCI.





D

PART NO.	POS.	DIM-X'	DIM-Y'	DIM-Z'	DIM-P'
20021221-XXX06XKLF	2 X 3	6.99	4.45	2.54	5.72
20021221-XXX08XKLF	2 X 4	8.26	5.72	3.81	6.99
20021221-XXX10XKLF	2 X 5	9.53	6.99	5.08	8.26
20021221-XXX12XKLF	2 X 6	10.80	8.26	6.35	9.53
20021221-XXX14XKLF	2 X 7	12.07	9.53	7.62	10.80
20021221-XXX16XKLF	2 X 8	13.34	10.80	8.89	12.07
20021221-XXX18XKLF	2 X 9	14.61	12.07	10.16	13.34
20021221-XXX20XKLF	2 X 10	15.88	13.34	11.43	14.61
20021221-XXX22XKLF	2 X 11	17.15	14.61	12.70	15.88
20021221-XXX24XKLF	2 X 12	18.42	15.88	13.97	17.15
20021221-XXX26XKLF	2 X 13	19.69	17.15	15.24	18.42
20021221-XXX28XKLF	2 X 14	20.96	18.42	16.51	19.69
20021221-XXX30XKLF	2 X 15	22.23	19.69	17.78	20.96
20021221-XXX32XKLF	2 X 16	23.50	20.96	19.05	22.23
20021221-XXX34XKLF	2 X 17	24.77	22.23	20.32	23.50
20021221-XXX36XKLF	2 X 18	26.04	23.50	21.59	24.77
20021221-XXX38XKLF	2 X 19	27.31	24.77	22.86	26.04
20021221-XXX40XKLF	2 X 20	28.58	26.04	24.13	27.31
20021221-XXX42XKLF	2 X 21	29.85	27.31	25.40	28.58
20021221-XXX44XKLF	2 X 22	31.12	28.58	26.67	29.85
20021221-XXX46XKLF	2 X 23	32.39	29.85	27.94	31.12
20021221-XXX48XKLF	2 X 24	33.66	31.12	29.21	32.39
20021221-XXX50XKLF	2 X 25	34.93	32.39	30.48	33.66
20021221-XXX52XKLF	2 X 26	36.20	33.66	31.75	34.93
20021221-XXX54XKLF	2 X 27	37.47	34.93	33.02	36.20
20021221-XXX56XKLF	2 X 28	38.74	36.20	34.29	37.47
20021221-XXX58XKLF	2 X 29	40.01	37.47	35.56	38.74
20021221-XXX60XKLF	2 X 30	41.28	38.74	36.83	40.01
20021221-XXX62XKLF	2 X 31	42.55	40.01	38.10	41.28
20021221-XXX64XKLF	2 X 32	43.82	41.28	39.37	42.55
20021221-XXX66XKLF	2 X 33	45.09	42.55	40.64	43.82
20021221-XXX68XKLF	2 X 34	46.36	43.82	41.91	45.09
20021221-XXX70XKLF	2 X 35	47.63	45.09	43.18	46.36
20021221-XXX72XKLF	2 X 36	48.90	46.36	44.45	47.63
20021221-XXX74XKLF	2 X 37	50.17	47.63	45.72	48.90
20021221-XXX76XKLF	2 X 38	51.44	48.90	46.99	50.17
20021221-XXX78XKLF	2 X 39	52.71	50.17	48.26	51.44
20021221-XXX80XKLF	2 X 40	53.98	51.44	49.53	52.71
20021221-XXX82XKLF	2 X 41	55.25	52.71	50.80	53.98
20021221-XXX84XKLF	2 X 42	56.52	53.98	52.07	55.25
20021221-XXX86XKLF	2 X 43	57.79	55.25	53.34	56.52
20021221-XXX88XKLF	2 X 44	59.06	56.52	54.61	57.79
20021221-XXX90XKLF	2 X 45	60.33	57.79	55.88	59.06

1

2

3

4

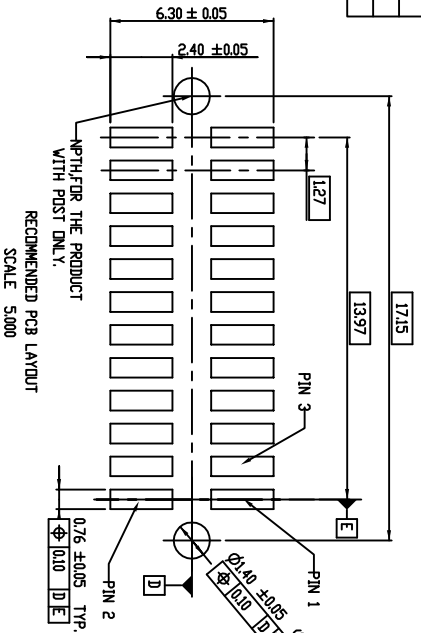
PART NO.	POS.	DIM-X'	DIM-Y'	DIM-Z'	DIM-P'
20021221-XXX92XKLF	2 X 46	61.60	59.06	57.15	60.33
20021221-XXX94XKLF	2 X 47	62.87	60.33	58.42	61.60
20021221-XXX96XKLF	2 X 48	64.14	61.60	59.69	62.87
20021221-XXX98XKLF	2 X 49	65.41	62.87	60.96	64.14
20021221-XXXA0XKLF	2 X 50	66.68	64.14	62.23	65.41

1

2

3

4



20021221-X X X XX X X L F

LEAD FREE
PLATING CODE
1: GOLD FLASH AT CONTACT, 127µm MIN. MATTE TIN AT TAIL
2: GOLD FLASH AT CONTACT, GOLD FLASH AT TAIL
3: 0.25µm Au MIN. AT CONTACT, 127µm MIN. MATTE TIN AT TAIL
4: 0.25µm Au MIN. AT CONTACT, GOLD FLASH AT TAIL
5: 0.25µm Au MIN. AT CONTACT, GOLD FLASH AT TAIL
6: 0.38µm GXT MIN. AT CONTACT, 127µm MIN. MATTE TIN AT TAIL
7: 0.38µm GXT MIN. AT CONTACT, GOLD FLASH AT TAIL
8: 0.76µm GXT MIN. AT CONTACT, 127µm MIN. MATTE TIN AT TAIL
9: 0.76µm GXT MIN. AT CONTACT, GOLD FLASH AT TAIL

PACKING STYLE
1: TUBE
2: TUBE + CAP
3: TAPE & REEL + CAP
PIN NO. SEE TABLE
SELECTED LOADED
Ø FULLY LOADED, OTHER SEE SHEET 3 NOTE 2
MATING LENGTH (DIM. A)
Ø: 3.05MM
POST OPTION
Ø: WITHOUT POST
1: WITH POST

1

2

3

4

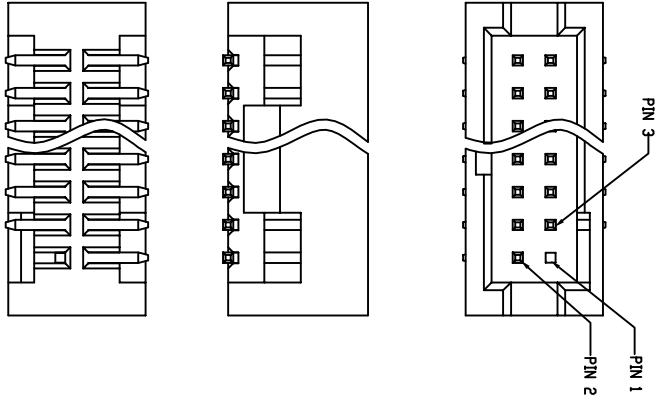
spec ref	tolerance std	TOLERANCES UNLESS OTHERWISE SPECIFIED	0X	±0.30	dr	ZK HU	2012-8-7	projection	M/M	size	A3	scale	1:1000
ISD 1101	ISD 406		linear	±0.20	eng	ZK HU	2012-8-7	product family	M/M	rel level	A3	1:1000	RELEASED
ISD 1302			angular	±0.10	chr	RICK BIAN	2012-8-7						
			0XXX	±0.10	appr	RICK BIAN	2012-8-7						
			0°	±2°	www.fcic.com cat#								
					FCI								
					MINITEK 127 SHRDED HDR								
					Product - Customer Drw								
					20021221								
					sheet 2 of 3								
					rev								
					K								

D

C

B

A



PART NUMBER 20021221-XX214XXLF
REMOVE PIN 1 FOR REFERENCE

PART NUMBER	AMOUNT OF PINS	PIN FREE LEADED
20021221-XX108XXLF	7	PIN #3
20021221-XX110XXLF	9	PIN #3
20021221-XX214XXLF	13	PIN #1
20021221-XX206XXLF	5	PIN #1

spec ref	tolerance std		TOLERANCES UNLESS OTHERWISE SPECIFIED		dr	ZK HU	2012-8-7	projection	MM	size	A3	scale	5,000
ISD 1101	ISD 406				eng	ZK HU	2012-8-7			ecm no	ELX-N-14376	Released rel level	
ISD 1302	surface <input checked="" type="checkbox"/> linear angular		0X ±0.30 0XX ±0.20 0XXX ±0.10		appr	RICK BIAN	2012-8-7			ecm no	ELX-N-14376		
www.fci.com cat 5M1								MINITEK 127 SHROUDED HDR		20021221		rev K	