

ON/OFF
POWER SWITCH

339.45 mm
[13.364 in]

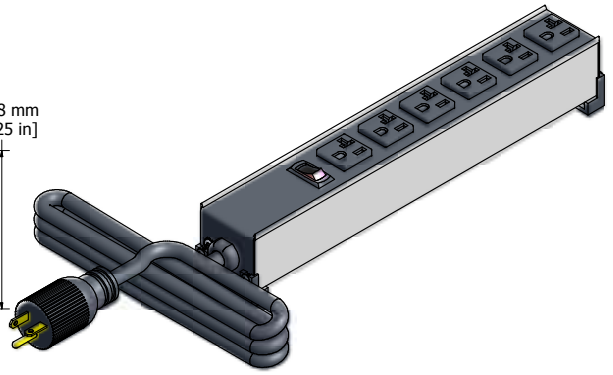
53.98 mm
[2.125 in]

52.32 mm
[2.060 in]

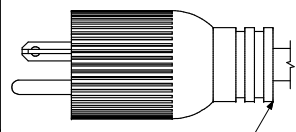
116.14 mm
[4.573 in]

40.00 mm TYP
[1.575 in]

ASSEMBLY - VIEW FROM TOP



ISOMETRIC VIEW



6' FOOT
POWER CORD
(NEMA 5-20P)

333.10 mm
[13.114 in]

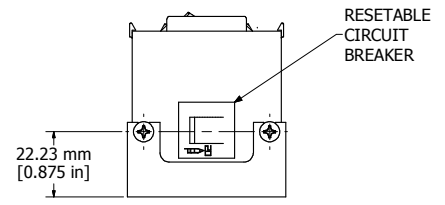
2.31 mm
[0.091 in]

59.28 mm
[2.334 in]

307.70 mm
[12.114 in]

9.53 mm
[0.375 in]

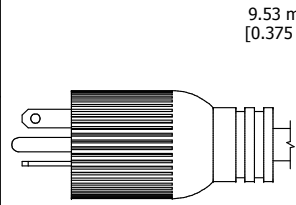
ASSEMBLY - VIEW FROM SIDE



RESETTABLE
CIRCUIT
BREAKER

22.23 mm
[0.875 in]

ASSEMBLY - VIEW FROM END



9.53 mm
[0.375 in]

320.40 mm
[12.614 in]

14.29 mm
[0.563 in]

25.40 mm
[1.000 in]

R4.37 mm
[0.172 in]

ASSEMBLY - VIEW FROM BOTTOM

1589H6**	
Finish - Top - Black Painted Steel	Bottom - Aluminum Extrusion
Rated - 120 VAC, 60 Hz, 20 Amps	
Approvals - CSA Certified Standards C22.2 (No. 21-95, 42-99) - UL Listed, Standard UL1363	
Cord Length	
1589H6F1 - 6' Foot Power Cord (NEMA 5-20P)	
1589H6G1 - 15' Foot Power Cord (NEMA 5-20P)	

**HAMMOND
MANUFACTURING™**

1589H6**

www.hammondmfg.com