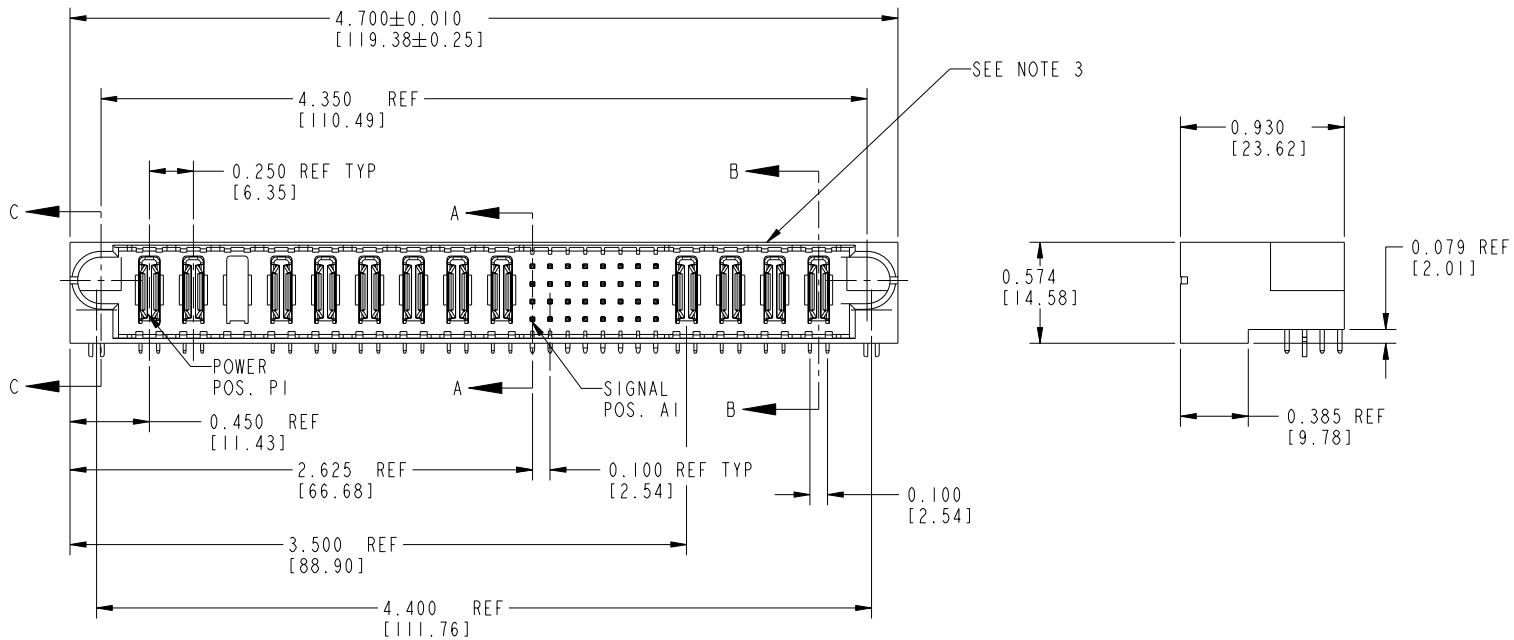


Tous droits strictement réservés. Reproduction ou communication à des tiers interdite sous quelque forme que ce soit sans autorisation écrite du propriétaire. Propriété de FCI. Droits de reproduction FCI.

All rights strictly reserved. Reproduction or issue to third parties in any form whatever is not permitted without written authority from the proprietor. Property of FCI. Copyright FCI.

PRODUCT NUMBER
SEE TABLE



mat'l code SEE NOTE 1				tolerances unless otherwise specified		CUSTOMER COPY	 www.fciconnect.com	
ltr	ecn no.	dr	date	linear	.XX ± .01 / .X ± .3	projection 	title 9P + 32S + 4P	
A	V90939	CHB	04-16-99		.XXX ± .005 / .X ± .13		RIGHT ANGLE SOLDER HEADER	
B	V91276	CHB	05-19-99		.XXX ± .0020 / .XXX ± .050	INCH / MM scale 1:1	product family PwrBlade	
C	V94056	CHB	10-20-99	angles	0° ± 2°		code 213	
D	V11193	JRW	04-16-01	dr	C. BAROT 05-24-99	size 51632		SHEET 1 OF 3
E	V12541	DAI	12-05-01	enr	J. BROWN 05-24-99	dwg no 51632		
F	DG06-0011	CS	01/09/06	chr	J. BROWN 05-24-99	A		
sheet index		revision sheet	F 1	F 2	F 3	cage code 22526		

form no. 7530-001-103

cage code 22526

PDM: Rev:F

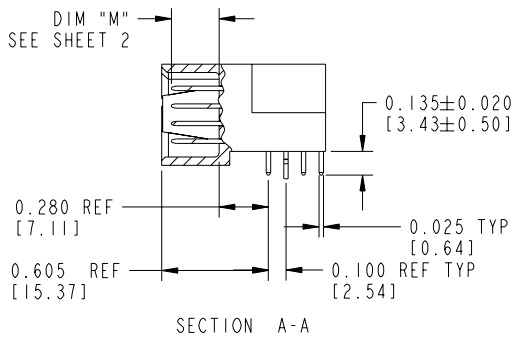
STATUS: Released

Printed: Dec 20, 2010

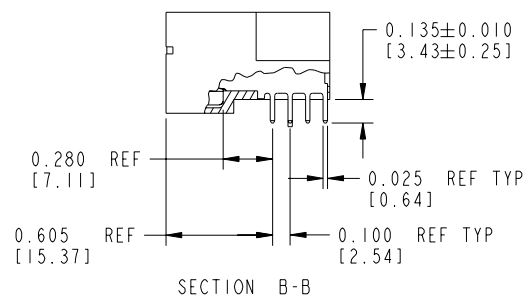
Tous droits strictement réservés. Reproduction ou communication à des tiers interdite sous quelque forme que ce soit sans autorisation écrite du propriétaire. Propriété de c FCI. Droits de reproduction FCI.

All rights strictly reserved. Reproduction or issue to third parties in any form whatever is not permitted without written authority from the proprietor. Property of FCI. Copyright FCI.

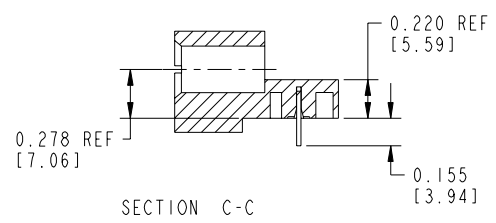
PRODUCT NUMBER
SEE TABLE



SECTION A-A



SECTION B-B

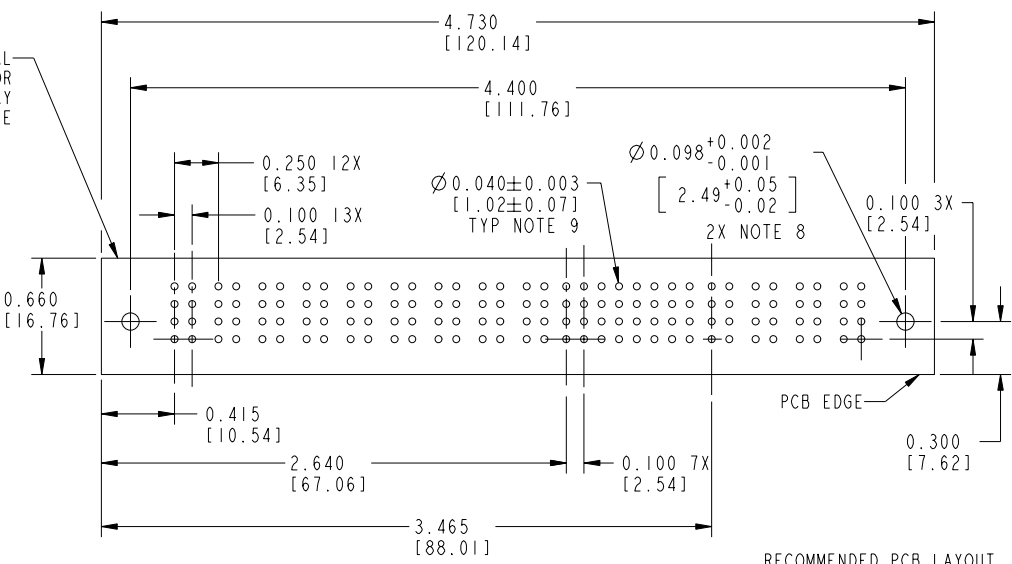


SECTION C-C

- CONNECTOR NOTES:
- HOUSING MATERIAL: UL 94 V-0 GLASS FILLED HIGH TEMP THERMOPLASTIC
SIGNAL CONTACT MATERIAL: COPPER ALLOY
POWER CONTACT MATERIAL: COPPER ALLOY
 - PLATING:
51632, 51632LF, PLATING SPEC SEE PRINT: 100064183.
 - MANUFACTURER'S NAME, P/N, AND DATE CODE TO APPEAR ON THIS SURFACE
 - PRODUCT SPECIFICATION GS-12-149

- PCB NOTES:
- ALL DIMENSIONS ARE BASIC UNLESS OTHERWISE SPECIFIED.
 - ALL THROUGH HOLES ARE LOCATED WITH A TRUE POSITION OF 0.004 [0.10]
 - ALL HOLE DIAMETERS ARE FINISHED HOLE SIZE
 - Ø0.098 [2.49] THROUGH HOLES ARE UNPLATED
 - Ø0.0453±0.0010 [1.151±0.025] DRILLED HOLES PLATED WITH 0.0003 [0.008] MIN SnPb OVER 0.001 [0.03] TO 0.003 [0.08] Cu PLATING TO ACHIEVE A Ø0.040±0.003 [1.02±0.07] HOLE.

MECHANICAL CONNECTOR STAY AWAY ZONE

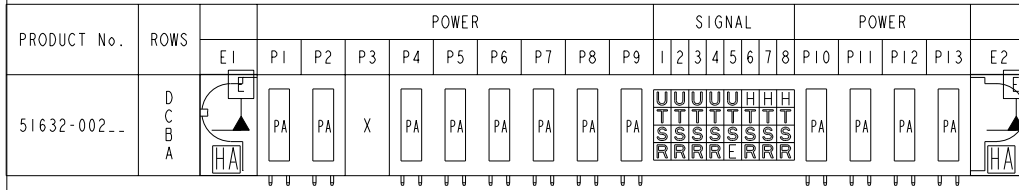
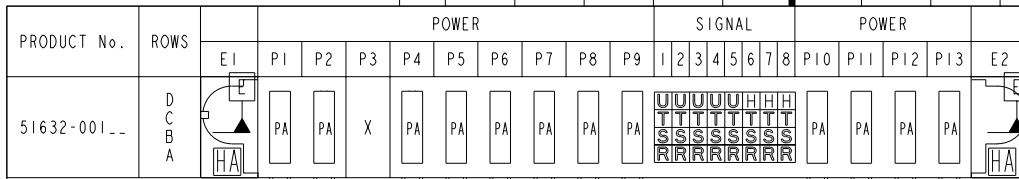


RECOMMENDED PCB LAYOUT

mat'l code SEE NOTE 1				tolerances unless otherwise specified				CUSTOMER COPY		 www.fciconnect.com	
ltr	ecn no.	dr	date	linear	.XX±.01/.X±.3	projection			title 9P + 32S + 4P RIGHT ANGLE SOLDER HEADER		
f					.XXX±.005/.X±.13				product family PwrBlade code 213		
				angles	.XXX±.0020/.XXX±.050				size 51632 SHEET 2		
				dr	0°±2°				scale 1:1		
				enrg	C. BAROT 05-24-99					cage code 22526	
				chr	J. BROWN 05-24-99						
				appd	J. BROWN 05-24-99						
sheet index	revision sheet										

Tous droits strictement réservés. Reproduction ou communication à des tiers interdite sous quelque forme que ce soit sans autorisation écrite du propriétaire. Propriété de FCI. Droits de reproduction FCI.

All rights strictly reserved. Reproduction or issue to third parties in any form whatever is not permitted without written authority from the proprietor. Property of FCI. Copyright FCI.



CODE	DIM "M" ±0.010 [0.25]		CONTACT TYPE
E	0.220	[5.59]	SIGNAL
H	0.220	[5.59]	SIGNAL
R	0.270	[6.86]	SIGNAL
S	0.270	[6.86]	SIGNAL
T	0.270	[6.86]	SIGNAL
U	0.270	[6.86]	SIGNAL
PA	N/A	[N/A]	POWER
HA	N/A	[N/A]	HOLD-DOWN
X	N/A	[N/A]	OMITTED

mat'l code SEE NOTE 1				tolerances unless otherwise specified		CUSTOMER COPY		 www.fciconnect.com	
ltr	ecn no.	dr	date	linear	.XX±.01/.X±.3	projection	title 9P + 32S + 4P RIGHT ANGLE SOLDER HEADER		
f					.XXX±.005/.X±.13	 INCH / MM scale 1:1	product family PwrBlade		code 213
				angles	.XXX±.0020/.XXX±.050		size 51632		SHEET 3
				dr	C. BAROT 05-24-99	size A			
				enrg	J. BROWN 05-24-99	cage code 22526			
				chr	J. BROWN 05-24-99				
				appd	J. BROWN 05-24-99				
sheet index	revision sheet								

form no. 7530-001-103

cage code 22526

PDM: Rev:F

STATUS:Released

Printed: Dec 20, 2010