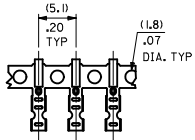
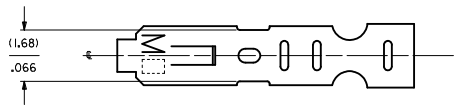
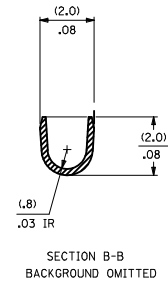
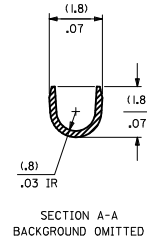
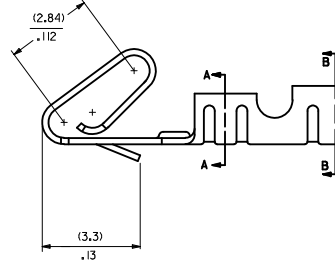
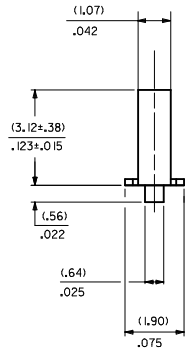
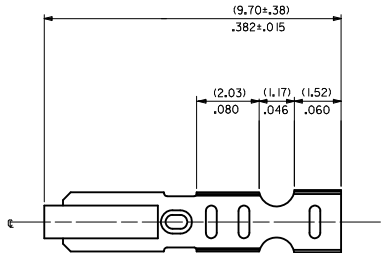


CARRIER VIEW



NOTES:

1. MATERIAL: 10.203±0.010/.0080±.0004 THICK BRASS
2. FINISH: P909 - OVERALL HOT TIN DIP: (0.00254)/.000100 MIN.
3. PRODUCT SPEC: PS-10-07
4. PACKAGING SPECIFICATION: LOOSE FORM TERMINALS: PER PK-2759-001  
CHAIN FORM TERMINALS: NONE
5. CRIMP IS FOR 22-30 GA WIRE WITH (1.57)/.062 DIA INSULATION MAX.
6. INSERTION FORCE OF TERMINAL INTO (2.54)/.100 CENTERLINE CONNECTOR IS 2.5 LBS. MAX
7. TERMINAL RETENTION IN HOUSING IS 26.7N / 6 LBS MIN. WHEN PULLED AT THE RATE OF 25.4MM / 1 INCH PER MINUTE.
8. DIMENSIONS GIVEN ACROSS CENTERLINES ARE SYMMETRICAL ABOUT THOSE CENTERLINES WITHIN HALF THE TOTAL TOLERANCE.
9. THIS PART CONFORMS TO CLASS B REQUIREMENTS OF COSMETIC SPECIFICATION PS-45499-002.



2759-(***)*	
PART NUMBER	ENGINEERING NUMBER
50-29-1638	2759-IP909IL
50-29-1757	2759-IP909IB

2759-(\*\*\*)\*

FORM  
L=LOOSE  
A=CHAIN PER ES-339-A  
B=CHAIN PER ES-339-B

PLATING  
SEE NOTE 2

<b>NOTE 7</b> IEC NO: UJCP2011-2220 DRAWN BY: DRWN:HK/PPER CHECKED BY: CHYD/BANDERSON APPROV:FSM/TH 2012/01/07 2012/01/09 2012/04/05	QUALITY SYMBOLS	GENERAL TOLERANCES (UNLESS SPECIFIED)	DIMENSION STYLE	SCALE	DESIGN UNITS	THIRD ANGLE PROJECTION	
	▽=0 ▽=0 ▽=0	mm INCH 4 PLACES ±.010 3 PLACES ±.010 2 PLACES ±.025 ±.014 1 PLACE ±.036 ±.014 0 PLACE ±.014 ±.014	MM/IN	---	INCH	DRAWN BY: JJS DATE: 07/29/10 CHECKED BY: KSS DATE: 07/29/10 APPROVED BY: YM DATE: 07/29/10	TITLE: CRIMP TERMINAL 22-30 GA WIRE MATERIAL NO: SEE CHART DOCUMENT NO: SD-2759-001
	ANGULAR ±1/2° DRAFT WHERE APPLICABLE MUST REMAIN WITHIN DIMENSIONS	SIZE: D THIS DRAWING CONTAINS INFORMATION THAT IS PROPRIETARY TO MOLEX INCORPORATED AND SHOULD NOT BE USED WITHOUT WRITTEN PERMISSION				SHEET NO. 1 OF 1	