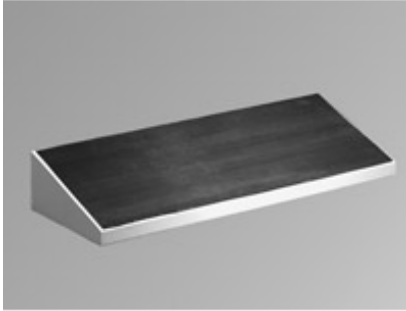
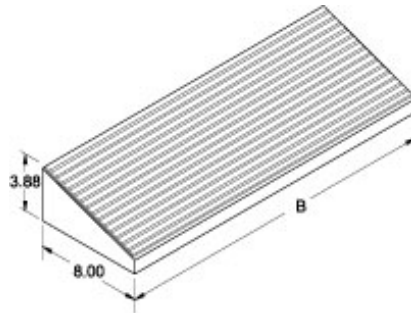


## Footrest *S2CF Series*



- Generally used in combination with plinth.
- Provides a raised foot support to relieve back stress.
- Gives the installation a "finished" appearance.
- Available in 24", 36", 48" and 60" widths.
- Maintains NEMA rating of system.
- Formed 14 gauge steel.
- Also offered with formed 14 gauge stainless steel.
- Rubber tread for added traction on footrest surface.
- Available in light gray and natural stainless steel.



<b>RAL 7035 Light Gray Part No.</b>	<b>Stainless Steel Part No.</b>	<b>B</b>
<b>2CLF24</b>	<b>2CSF24</b>	24.00
<b>2CLF36</b>	<b>2CSF36</b>	36.00
<b>2CLF48</b>	<b>2CSF48</b>	48.00
<b>2CLF60</b>	<b>2CSF60</b>	60.00

*Data subject to change without notice*