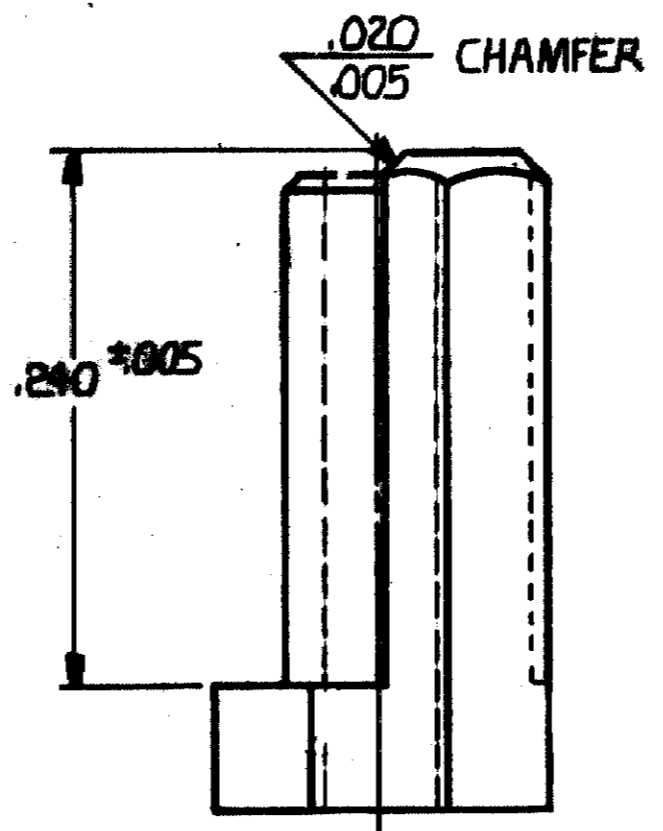
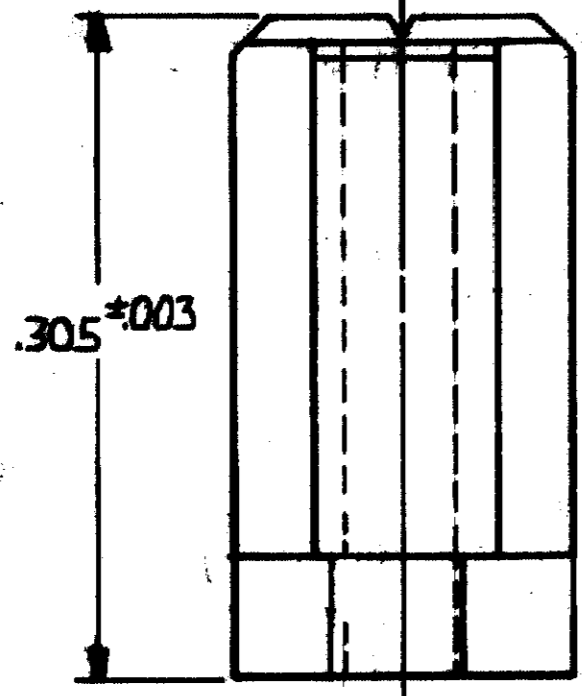
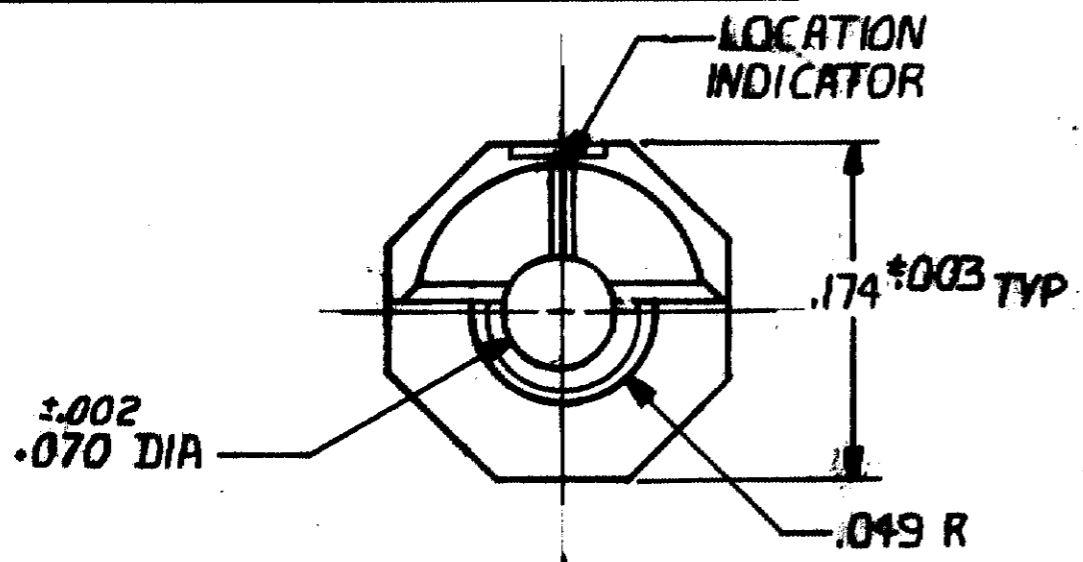


© COPYRIGHT 19 BY AMP INCORPORATED, HARRISBURG, PA.
 ALL INTERNATIONAL RIGHTS RESERVED. AMP INCORPORATED PRODUCTS
 COVERED BY U. S. AND FOREIGN PATENTS AND/OR PATENTS PENDING.

53116-1 I. AS SHOWN
 M55302/31-08

REVISIONS						
P	F	ZONE	LTR	DESCRIPTION	DATE	APPROVED
	✓		O	RELEASED WAS 5085-430 RW	2-16-79	
A	✓		A	REVISED 5962 rms	3-15-79	
	✓		B	REVISED: AB-1237 db	11-85	EAM
	✓		BI	ECN AB-2357 ZP	4-87	EAM



UNLESS OTHERWISE SPECIFIED DIMENSIONS ARE IN INCHES. TOLERANCES ON: DECIMALS ± ANGLES ±		CONTRACT NO		AMP INCORPORATED Harrisburg, Pa.	
MATERIAL GLASS FILLED POLYESTER COLOR BLACK		DRG Robert Weber 2-2-79		NAME EXTERNAL KEY FOR BOX CONNECTOR	
FINISH —		CHK R.W. Dudgeon 2-16-79		SIZE B	
		APPD Royce W. Dumb 2-11-79		CODE IDENT NO 00779	
		APPD R. Blumhardt 2-16-79		DRAWING NO 53116	
		DSGN APPD		SCALE 10:1	
		OTHER APPD		SHEET	