

PART NUMBER	REV	FIRST USED	TERMINATOR	FEED TYPE	DESCRIPTION
1528375-1	A	-	LEADMAKER	MECH POST FEED	CUTS CARRIER
1528375-2	A	-	BENCH	MECH PRE FEED	CUTS CARRIER
1528375-6	A	-	LEADMAKER	MECH POST FEED	CONTINUOUS CARRIER
7-1528375-1	A	-	LEADMAKER	MECH POST FEED	-1 AND SPARE PARTS
7-1528375-2	A	-	BENCH	MECH PRE FEED	-2 AND SPARE PARTS
7-1528375-6	A	-	LEADMAKER	MECH POST FEED	-6 AND SPARE PARTS
7-1528375-7	A	-	-	-	SPARE PARTS KIT

CRIMP DATA AMP TERMINAL AMP CRIMP SPECS

TERMINAL NAME: .125 POWERBAND PIN / SKT CONTACT ASSY

CRIMP	SIZE	TYPE	RANGE
WIRE	3.30 [.130 IN]	F	14-12 AWG

INSUL	WIRE STRIP LENGTH	APPL INSTRUCTION
-	6.73-7.49 [.265-.295 IN]	408-8322 & 408-8490

TERMINAL	FEED
APPL SPEC 114-10043	19.05 [.750 IN]

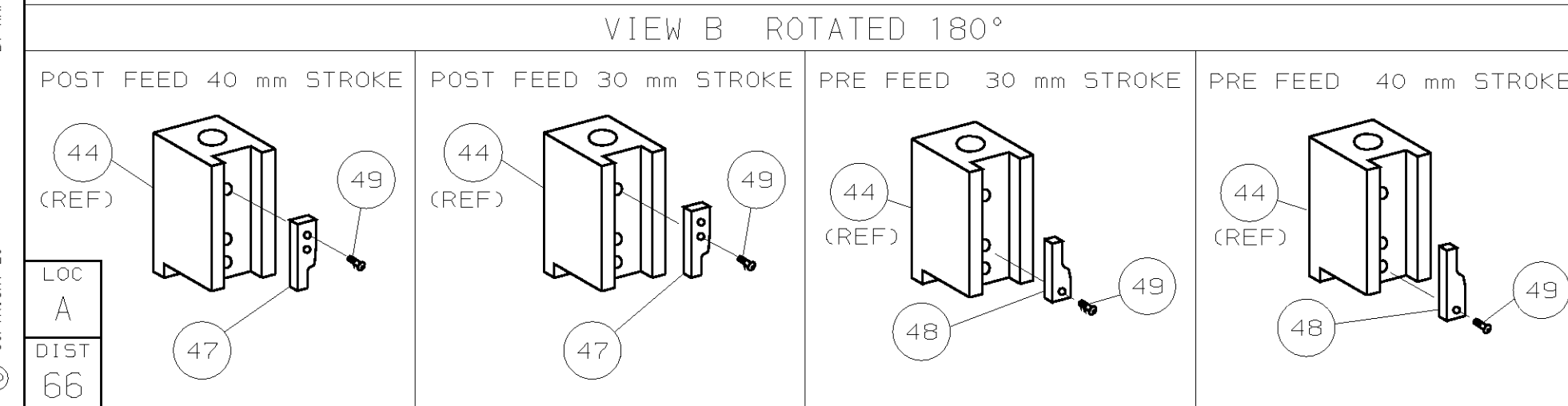
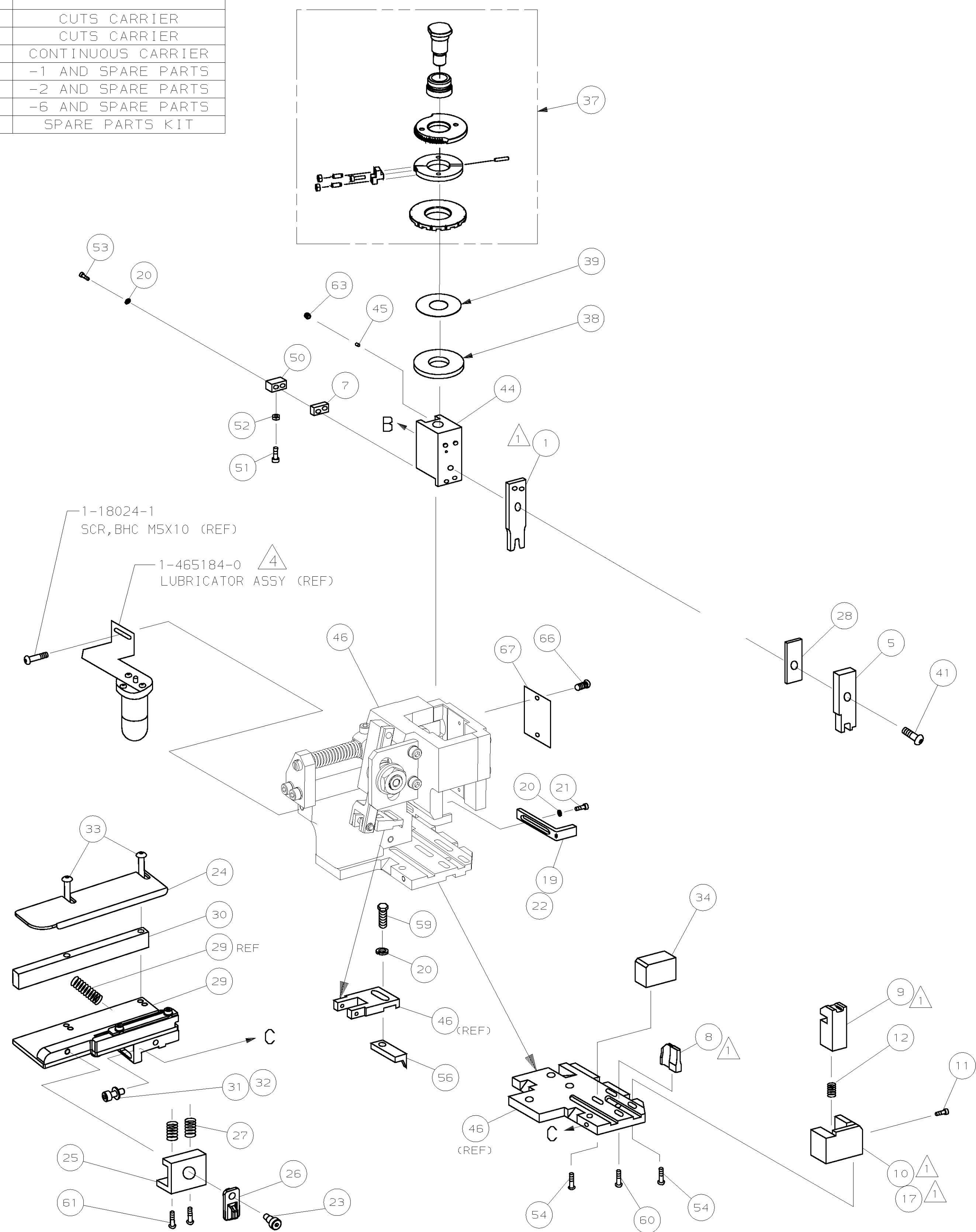
TERMINALS APPLIED

Part Number	Rev	First Used	Terminator	Feed Type	Description
213845	-	-	-	-	-
213847	-	-	-	-	-

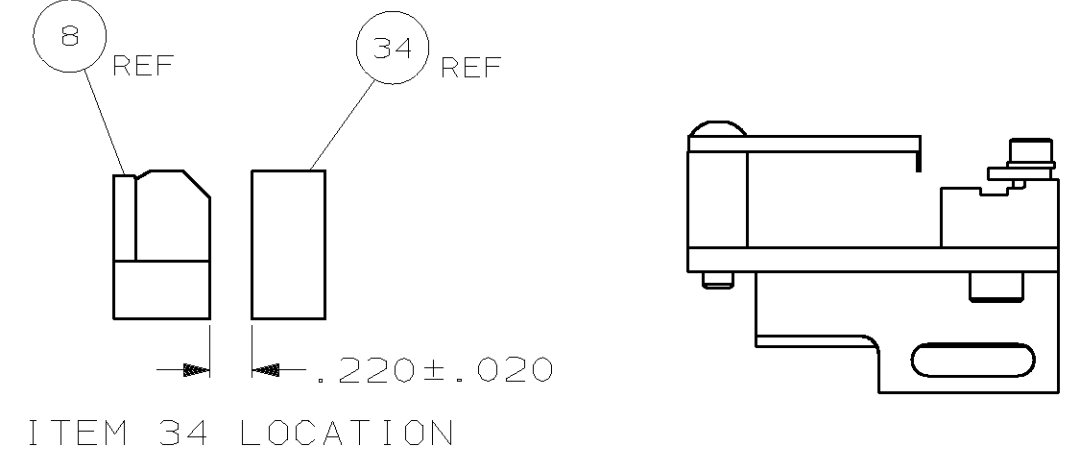
WIRE SIZE	CRIMP HEIGHT	REF SETTING
12 AWG	2.34 ±0.05 [.092 ±.002 IN]	B6
14 AWG	2.11 ±0.05 [.083 ±.002 IN]	C9

WIRE SIZE	CRIMP HEIGHT	REF SETTING
12 AWG	2.34 ±0.05 [.092 ±.002 IN]	B6
14 AWG	2.11 ±0.05 [.083 ±.002 IN]	C9

- RECOMMENDED SPARE PARTS.
- GREASE RAM, CAM, CAM FOLLOWER AND FEED ROD LIGHTLY.
- LUBRICATE DAILY PER THE APPLICATOR INSTRUCTION SHEET SUPPLIED WITH THE APPLICATOR.
- CERTAIN TERMINALS REQUIRE LUBRICATION. REFER TO THE APPLICATOR INSTRUCTION SHEET FOR MORE INFORMATION.



*** WARNING:**
ON INSTALLATION, SET WIRE DISC TO LARGEST WIRE SIZE SETTING. USE OF SETTINGS BELOW MIN REQUIRED CRIMP HEIGHT SETTING WILL CAUSE DAMAGE TO CRIMP TOOLING.



QTY	REQD	PER	ASSY	PARTS LIST	DESCRIPTION	ITEM NO	
-	1	1	1	1	1528375	PRINT, APPLICATOR LOG SHEET	73
-	1	1	1	1	1338705-3	DOCUMENTATION PACKAGE	71
-	1	1	1	1	461264-5	PLATE, IDENTIFICATION	67
-	2	2	2	2	21017-2	SCR, DRIVE (#2x.19) ID PLATE	66
-	1	1	1	1	3-18031-0	SCR, SKT SET (M6X6) RAM	65
-	1	1	1	1	1-18024-5	SCR, BHC (M5X25) DRAG	61
-	1	1	1	1	18024-7	SCR, BHC (M4X10) ANVIL	60
-	1	1	1	1	5-18022-2	SCR, HEX (M4X8) FEED FINGER	59
-	1	1	1	1	1338685-1	PAWL, FEED	56
-	4	4	4	4	18024-8	SCR, BHC (M4X12) SHEAR HOLDER	54
-	2	2	2	2	9-18023-6	SCR, SHC (M4X14) TERM HLD DWN	53
-	1	1	1	1	18030-1	NUT, HEX (M3) HOLD DOWN	52
-	1	1	1	1	811242-5	BUMPER, HOLDDOWN	51
-	1	1	1	1	690753-2	SPACER, TONKER	50
-	1	1	1	1	18024-3	SCR, BHC (M3X10) CAM	49
-	1	1	1	1	1338675-1	CAM, PRE FEED 30 & 40 mm ST	48
-	1	1	1	1	1338676-1	CAM, POST FEED 30 & 40 mm ST	47
-	1	1	1	1	1320999-4	APPLICATOR BASIC SUBASSY	46
-	1	1	1	1	690191-1	PLUG, NYLON	45
-	1	1	1	1	1333257-1	RAM	44
-	1	1	1	1	2-18024-6	SCR, BHC (M8X25) RAM	41
-	1	1	1	1	690125-1	SHIM SUBASSY	39
-	1	1	1	1	1-469367-0	SPACER, FINE ADJUST	38
-	1	1	1	1	879103-2	FINE ADJUST HEAD SUBASSY	37
-	1	1	1	1	1320934-3	SUPPORT, TERMINAL	34
-	2	2	2	2	1-18024-0	SCR, BHC (M4X20) STRIP GUIDE	33
-	1	1	1	1	18027-2	WASHER, FLAT (M4)	32
-	1	1	1	1	1-18023-2	SCR, SKT CAP (M4X12) MOUNT BLOCK	31
-	1	1	1	1	1-1320908-0	SPACER, STRIP GUIDE	30
-	1	1	1	1	1633073-1	STRIP GUIDE PLATE ASSY	29
-	1	1	1	1	1-455888-8	SPACER, FRONT SHEAR DEP	28
-	2	2	2	2	1-22284-0	SPRING, DRAG	27
-	1	1	1	1	356835-1	LEVER, DRAG RELEASE	26
-	1	1	1	1	240792-1	DRAG, TERMINAL	25
-	1	1	1	1	1320928-1	PLATE, STRIP GUIDE	24
-	1	1	1	1	980371-4	SCR, SHC SHLD	23
-	1	1	1	1	690472-2	STRIPPER	22
-	1	1	1	1	1-18023-1	SCR, SHC (M4X10) STRIPPER	21
-	4	4	4	4	18025-2	WASHER, LOCK (M4) STRIPPER	20
-	1	1	1	1	690472-1	STRIPPER	19
-	1	1	1	1	1338684-2	HOLDER, SHEAR, FRONT (NO-CUT)	17
-	1	1	1	1	5-22280-0	SPRING, SHEAR	12
-	1	1	1	1	356885-5	STOP, SHEAR	11
-	1	1	1	1	1-1320921-0	HOLDER, SHEAR, FRONT (CUT)	10
-	1	1	1	1	454276-5	SHEAR, FLOAT (FRONT)	9
-	1	2	2	2	1-1333227-5	ANVIL	8
-	1	1	1	1	6-240641-4	SPACER, DEPRESSOR (REAR)	7
-	1	1	1	1	1-455889-8	DEPRESSOR, SHEAR (FRONT)	5
-	1	2	2	2	1-456410-6	CRIMPER, WIRE	1

DO NOT SCALE PRINT. TOLERANCES UNLESS OTHERWISE SPECIFIED: 1 PLC DEC ±, 2 PLC DEC ±, 3 PLC DEC ±. ANGLES ±, SURF TEXTURE: REMOVE BURRS, BREAK SHARP EDGES RO.38 MAX.

AMP Tyco Electronics Harrisburg, PA 17105-3608

NAME: FINE ADJ SIDE FD HD-I APPL MACHINE REF: HD-I APPL

SCALE: DWG NO: 1528375 SHEET REV: 1 OF 1 REV: A

CUSTOMER AND ASSEMBLY DRAWING