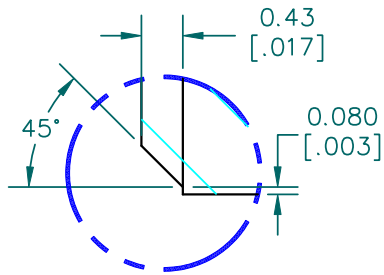


DETAIL A

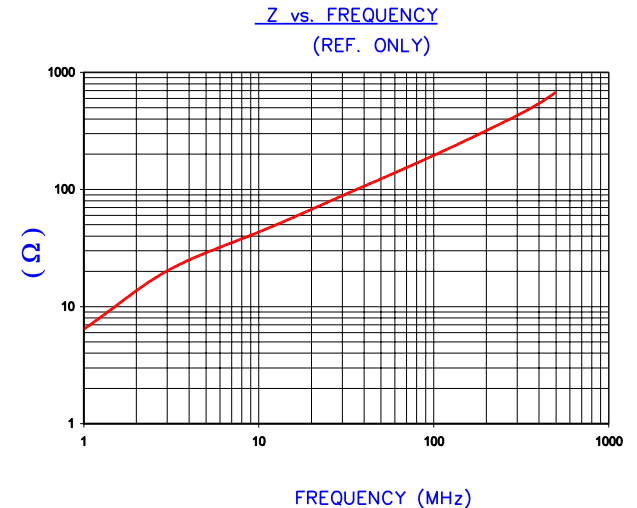
SECTION A-A



DETAIL A  
SCALE 6:1

**UNCONTROLLED  
DOCUMENT**

IMPEDANCE ( Z )				
Frequency	25 MHz	100 MHz	300 MHz	
Nominal (REF)	78 Ω	192 Ω	418 Ω	
Minimum	- Ω	173 Ω	- Ω	

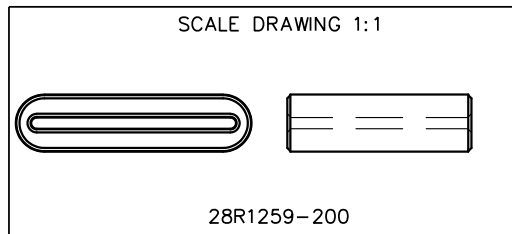


AGILENT E4991A Impedance/Material Analyzer  
HP 16092A Test Fixture, REF # 2991

FERRITE CORE DIMENSIONS (SPEC):mm[Inches]

A	32.00 [1.260]	+	0.50 [.020]
B	27.80 [1.094]	+	0.50 [.020]
C	25.00 [.984]	+	1.00 [.039]
D	7.75 [.305]	+	0.50 [.020]
E	1.50 [.060]	+	0.50 [.020]

WEIGHT/1000 23.74 kgs [52.34 Lbs]



DIMENSIONS ARE IN mm[INCHES].				THIS DOCUMENT CONTAINS INFORMATION WHICH IS PROPRIETARY AND CONFIDENTIAL TO STEWARD. NO PRODUCTION OR PUBLICATION OF THIS DOCUMENT IN WHOLE OR IN PART SHALL BE MADE WITHOUT WRITTEN AUTHORIZATION FROM STEWARD.			
F	UPDATE MIN Z SPEC@100 Mhz, ADD REF #	02/03/04	JRK	<h1>Steward</h1>			
E	UPDATE FORMAT CURVE & Z SPECS	05/06/03	JRK				
D	UPDATE TO CNZ FORMAT ADD Z CURVE	07/29/02	JRK	PROJECT/PART NUMBER:	REV	PART TYPE:	DRAWN BY:
C	UPDATE PRINT, ADJUST IMPEDANCE VALUES COR. DETAIL "A", CORRECT PART WEIGHT	02/26/02	JRK	28R1259-200	F	FERRITE RIBBON CORE	DTR
B	CHG Z SPECS & FIRED WEIGHT	06/02/99	BAC	DATE:	SCALE:	SHEET:	
A	ORIGINAL DRAFT	03/17/98	DTR	03/17/98	3 : 1		
REV	DESCRIPTION	DATE	INT	CAD #	TOOL #		
				28R1259-200-F	R1259		STEWARD 28