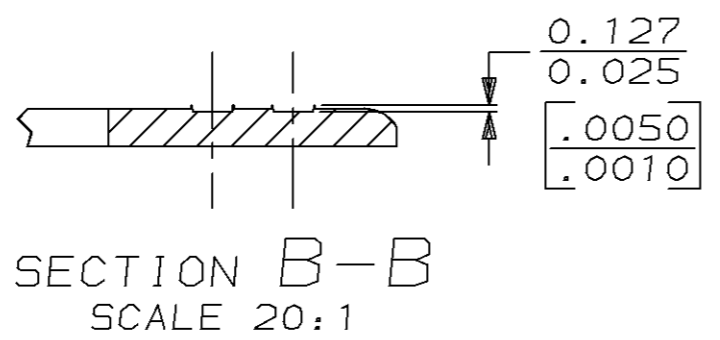
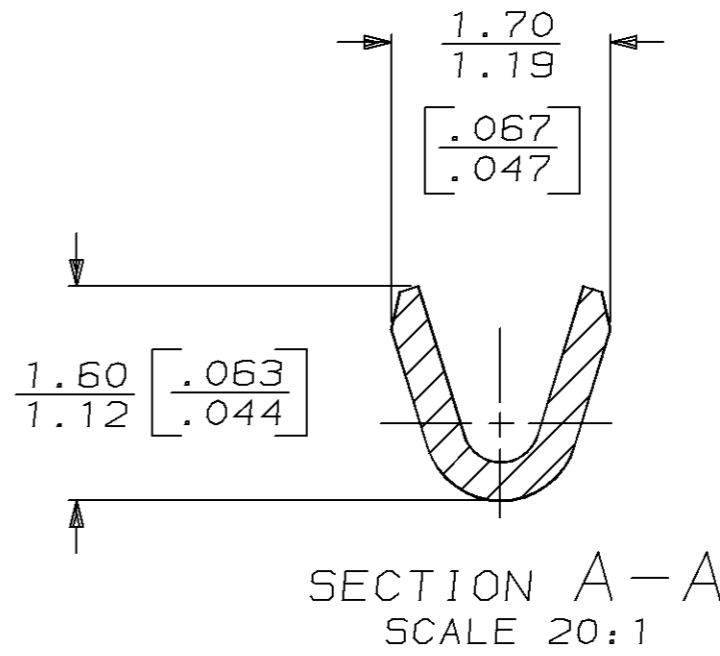
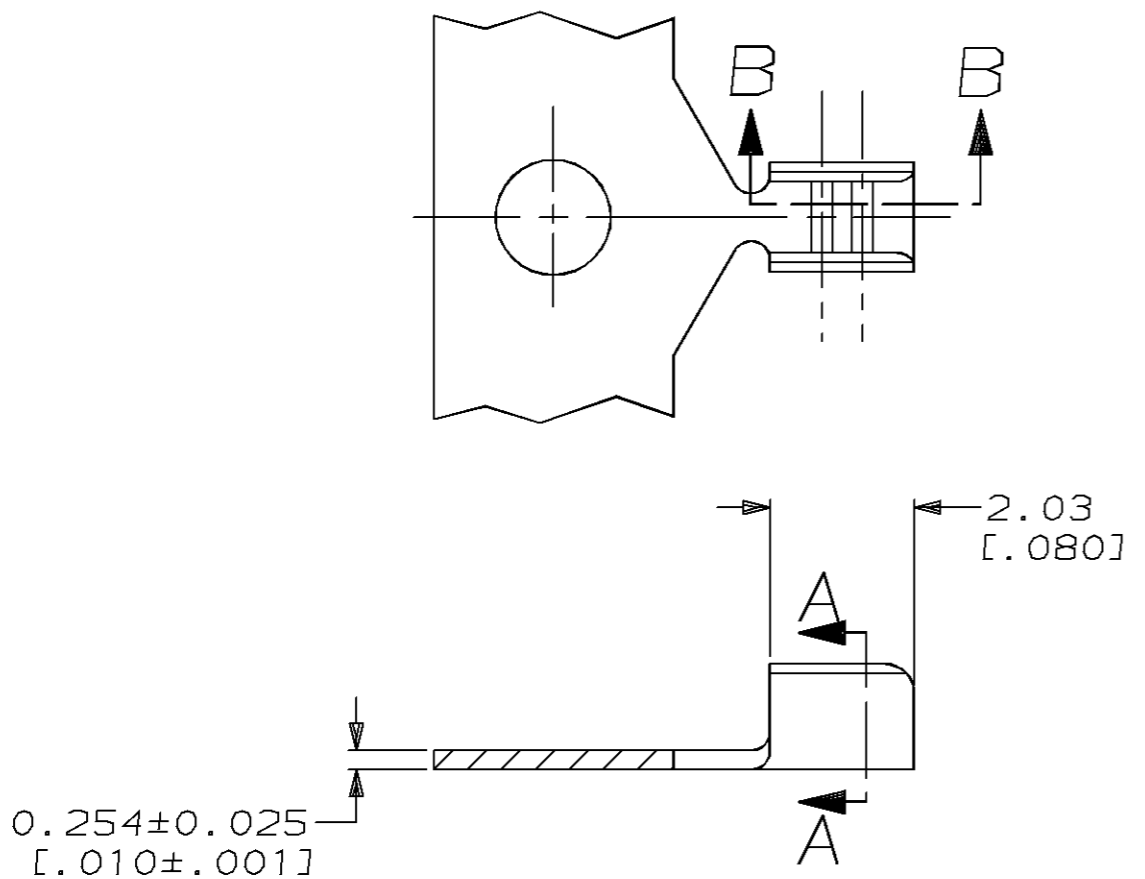


THIS DRAWING IS UNPUBLISHED. RELEASED FOR PUBLICATION, 19 .  
 © COPYRIGHT 19 BY AMP INCORPORATED. ALL INTERNATIONAL RIGHTS RESERVED.

LOC	DIST	P	F	REVISIONS				
				ZONE	LTR	DESCRIPTION	DATE	APPD
AF	50				C	OBSOLETE -2 PER 0710-0274-96	PF/DS	19/JUN/96

- 1 CONTINUOUS STRIP ON REEL.
- 2 0.00254 [.000100] MIN TIN PL PER MIL-T-10727.
- 3 0.00254 [.000100] MIN TIN PL PER MIL-T-10727 OVER 0.00254 [.000100] MIN COPPER UNDERPLATE PER MIL-C-14550.



**METRIC**

OBSOLETE	3	100-300 CMA	63621-2
	2		63621-1
	FINISH	WIRE RANGE	PART NO
DO NOT SCALE PRINT. UNLESS SPECIFIED DIMENSIONS IN mm [INCHES] TOLERANCES ON: 2 PLC DEC ± 0.25 [.010] 3 PLC DEC ± - ANGLES ± -	DR 8/8/91 P FORTNEY CHK 8/8/91 MS FEHER APPD 8/8/91 D SCHWENK APPD 8/8/91 R WEAIVILL PRODUCT SPEC - APPLICATION SPEC - WEIGHT -	<b>AMP</b> AMP Incorporated Harrisburg, PA 17105-3608 NAME SPLICE, AMPLIVAR, SUB-MINIATURE	
MATERIAL 082 BRASS		SIZE B	CAGE CODE 00779
FINISH SEE TABLE		SCALE 10:1	DRAWING NO 63621
			SHEET 1 OF 1