

## RGBX-SS

~20° smooth spot beam optimized for Osram Ostar-SMT RGB. Assembly with holder.

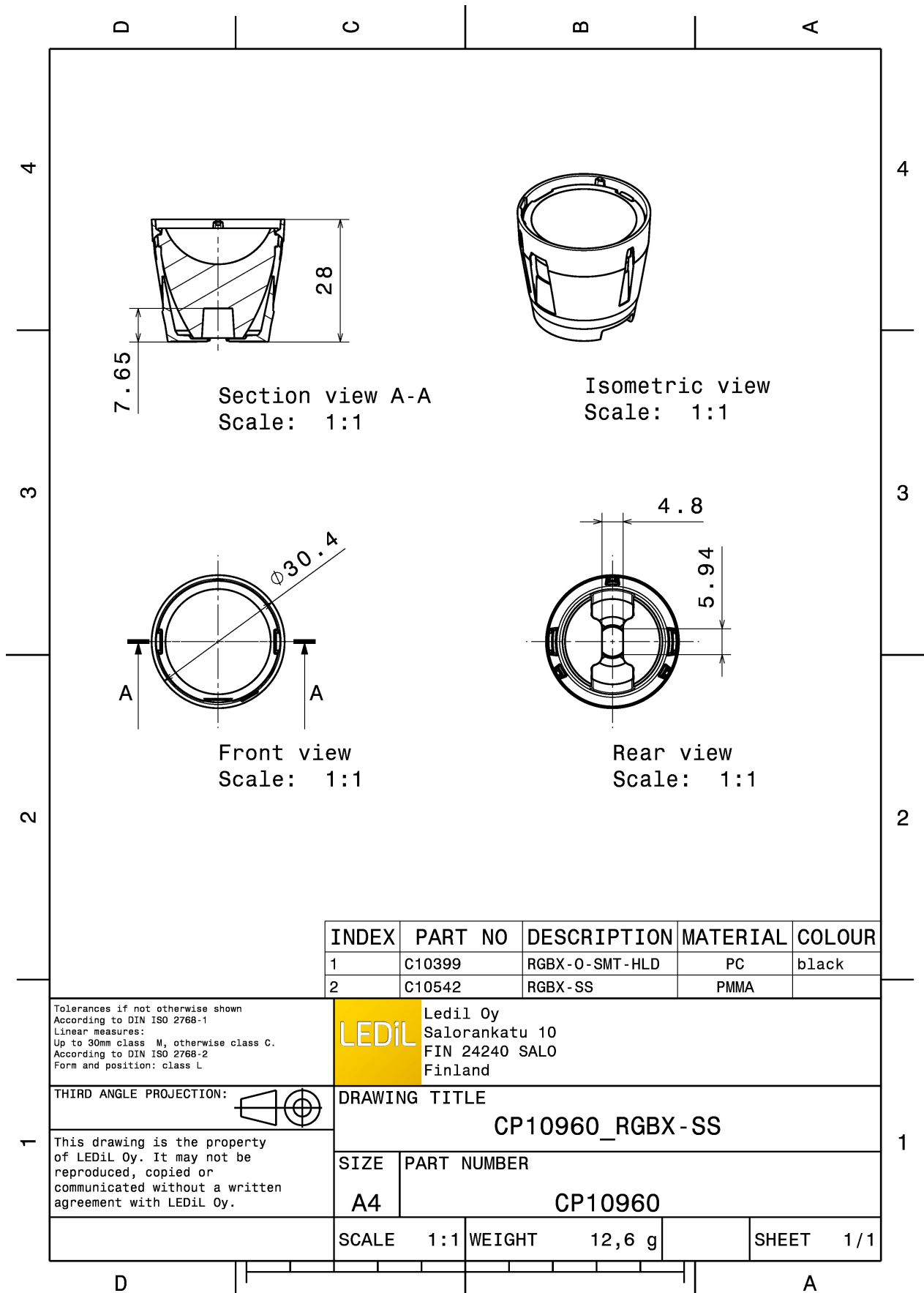
### TECHNICAL SPECIFICATIONS:

Dimensions	Ø 30 mm
Height	28 mm
Fastening	glue
Colour	black
Box size	480 x 280 x 300 mm
Box weight	7.5 kg
Quantity in Box	486 pcs
ROHS compliant	yes ⓘ



### MATERIAL SPECIFICATIONS:

Component	Type	Material	Colour
RGBX-SS	Lens	PMMA	clear
RGBX-O-SMT-HLD	Holder	PC	black



INDEX	PART NO	DESCRIPTION	MATERIAL	COLOUR
1	C10399	RGBX-O-SMT-HLD	PC	black
2	C10542	RGBX-SS	PMMA	

Tolerances if not otherwise shown  
According to DIN ISO 2768-1  
Linear measures:  
Up to 30mm class M, otherwise class C.  
According to DIN ISO 2768-2  
Form and position: class L



Ledil Oy  
Salorankatu 10  
FIN 24240 SALO  
Finland

THIRD ANGLE PROJECTION:

DRAWING TITLE  
CP10960\_RGBX-SS

This drawing is the property of LEDiL Oy. It may not be reproduced, copied or communicated without a written agreement with LEDiL Oy.

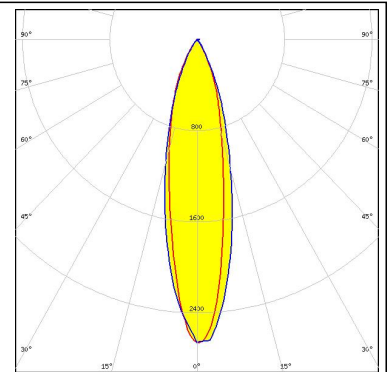
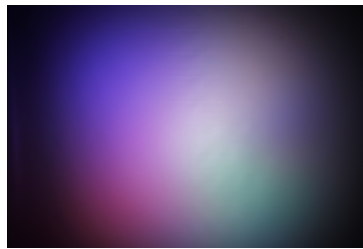
SIZE	PART NUMBER
A4	CP10960

SCALE	1:1	WEIGHT	12,6 g	SHEET	1/1
-------	-----	--------	--------	-------	-----

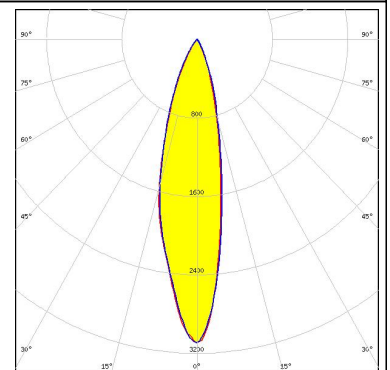
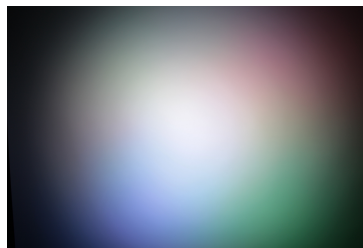
#### PHOTOMETRIC DATA (MEASURED):



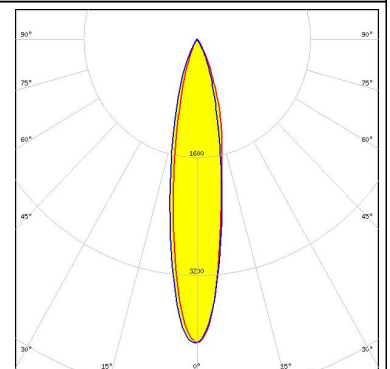
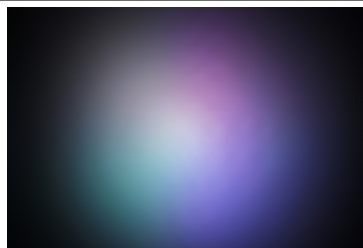
LED LUXEON C RGBW  
 FWHM 22.0°  
 Efficiency 76 %  
 Peak intensity 2.700 cd/lm  
 Required components:



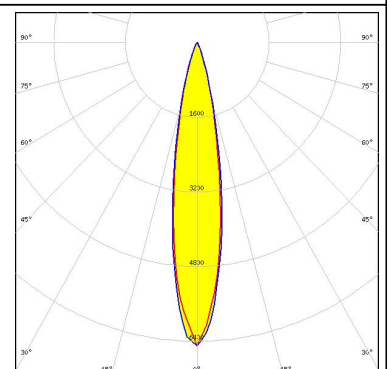
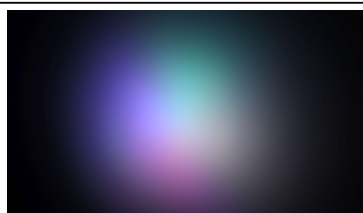
LED LUXEON CZ RGBW  
 FWHM 24.0°  
 Efficiency 80 %  
 Peak intensity 3.100 cd/lm  
 Required components:



LED SBM-40-RGBW  
 FWHM 19.0°  
 Efficiency 83 %  
 Peak intensity 4.100 cd/lm  
 Required components:



LED Ostar-SMT RGB  
 FWHM 18.0°  
 Efficiency 85 %  
 Peak intensity 4.400 cd/lm  
 Required components:



### GENERAL INFORMATION:

NOTE: The typical beam angle will be changed by different color, chip size and chip position tolerance. The typical total beam angle is the full angle measured where the luminous intensity is half of the peak value.

### MATERIALS:

As part of our continuous research and improvement processes, and to ensure the best possible quality and availability of our products, LEDiL reserves the right to change material grades without notice.

### PRODUCT DATA USER AGREEMENT AND DISCLAIMER:

The measured data in the provided downloadable LEDiL Product Datasheets and Mechanical 2D-Drawings is rounded and provided as reference for planning. LEDiL Oy's optical specifications have been verified by conducting performance testing of the products in accordance with the company's quality system. The reported data are averaged results of multiple measurements with typical variation. LEDiL Oy reserves the right to without prior notification make changes and improvements to its products.

LEDiL Oy assumes neither warranty, nor guarantee nor any other liability of any kind for the contents and correctness of the provided data. The provided data has been generated with highest diligence but the provided data may in reality not represent the complete possible variation range of all intrinsic parameters. Therefore, in certain cases a deviation from the provided data could occur.

LEDiL Oy reserves the right to undertake technical changes of its products without further notification which could lead to changes in the provided data. LEDiL Oy assumes no liability of any kind for the possible deviation from any provided data or any other damage resulting from the usage of the provided data.

The user agrees to this disclaimer and user agreement with the download or usage of the provided files.

#### LEDiL Oy

Joensuunkatu 13  
FI-24240 SALO  
Finland

#### LEDiL Inc.

228 West Page Street  
Suite D  
Sycamore IL 60178  
USA

#### Local sales and technical support

[www.ledil.com/  
where\\_to\\_buy](http://www.ledil.com/where_to_buy)

#### Shipping locations

Salo, Finland  
Hong Kong, China

#### Distribution Partners

[www.ledil.com/  
where\\_to\\_buy](http://www.ledil.com/where_to_buy)