

6

5

4

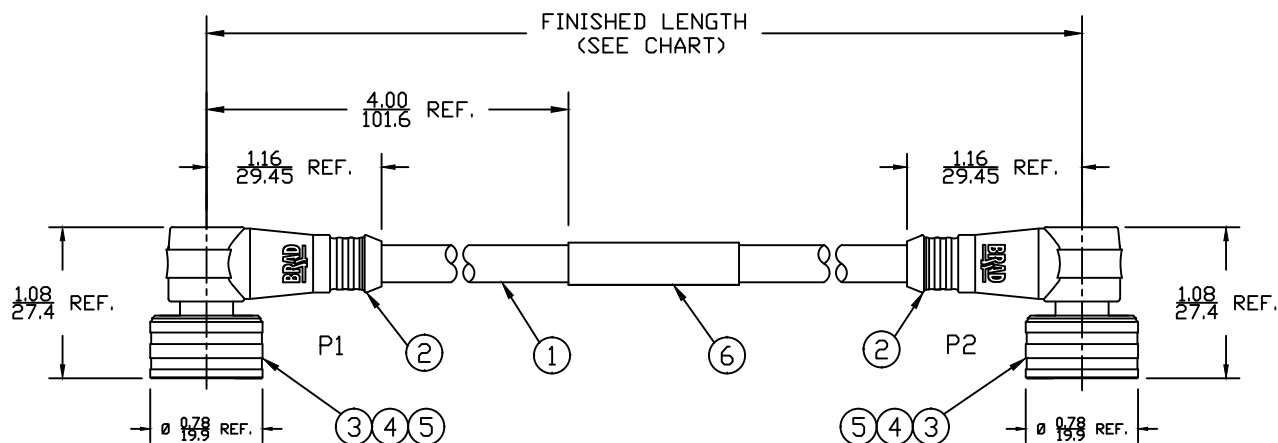
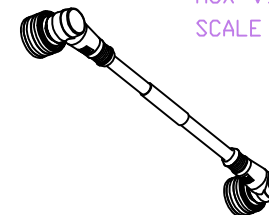
3

2

1

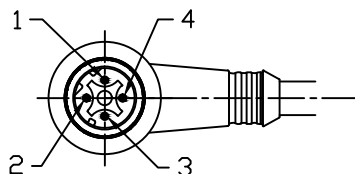
PART NUMBER	ENGINEERING NO.	LENGTH ± TOLERANCE
1201080082	EWWA06303M010	3' 3" +2.19"/-0" [ 1M +55.6/-0 mm ]
1201080084	EWWA06303M050	16' 4" +6.5"/-0" [ 5M +165.0/-0 mm ]
1201080085	EWWA06303M100	32' 10" +6.5"/-0" [ 10M +317.5/-0 mm ]

(B)

AUX VIEW  
SCALE 1:4

## NOTES:

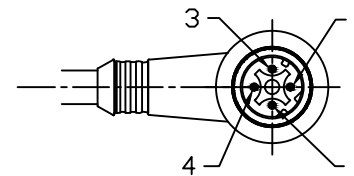
- 1) MATERIAL: SEE TABLE
- 2) FINISHES: SEE TABLE
- 3) CABLE: #24/4 UNSHIELDED PVC
- 4) ELECTRICAL DATA:  
ACCORDING TO CAT5e ETHERNET STANDARD  
MAX. VOLTAGE: 30V  
MAX. CURRENT 1.5A
- 5) ENVIRONMENTAL:  
PROTECTION IP67  
TEMPERATURE RANGE: -20°C TO 75°C
- 6) WRAP LABEL IS MARKED WITH P/N, DATE CODE,  
VOLTAGE & AMPERAGE.
- 7) ASSEMBLY IS RoHS COMPLIANT.



MALE-FACE VIEW

P1		P2
1	ORANGE	1
2	BLUE	2
3	DRG/WHITE	3
4	BLUE/WHITE	4

WIRING DIAGRAM



MALE-FACE VIEW

6	1	LABEL	PLASTIC FILM	BLACK/YELLOW
5	2	INSERT	PUR	BLACK
4	8	PIN CONTACT	COPPER ALLOY	GOLD PLATED
3	2	M12 ULTRA-LOCK HEAD ASSY	BRASS	NICKEL
2	2	DVERMOLD	PUR	BLACK
1	1	ETHERNET CABLE-CAT5E	PVC JACKET	TEAL
ITEM	QTY.	DESCRIPTION	MATERIAL	FINISH

ADD PIN 1201080085	5/6/13
EC NO: IFC2013-1710	
DRWN: RSTONE	
CHKD: K JOZWIK	
APPR: BWOODMAN	
B	REV

QUALITY SYMBOLS  
 $\nabla=0$   
 $\nabla/C=0$

GENERAL TOLERANCES  
(UNLESS SPECIFIED)

	mm	INCH
4 PLACES	±---	±---
3 PLACES	±---	±.005
2 PLACES	±---	±.010
1 PLACE	±---	±.020

ANGULAR ±1/2°

DRAFT WHERE APPLICABLE  
MUST REMAIN  
WITHIN DIMENSIONSDIMENSION STYLE  
IN/MM

DRAWN BY	DATE
VOU	2009/07/07
CHECKED BY	DATE
BWOODMAN	2009/07/31
APPROVED BY	DATE
---	---

SCALE  
3:4DESIGN UNITS  
INCHTHIRD ANGLE  
PROJECTION

TITLE  
**M12 ULOCK CABLE ASSY**  
**4P M/MP 90/90 D-CODE**  
**#24/4 UNSHIELDED PVC**

molex **MOLEX INCORPORATED**

MATERIAL NO.  
**SEE CHART**DOCUMENT NO.  
**SD-120108-008**SHEET NO.  
**1 OF 1**SIZE  
**A**THIS DRAWING CONTAINS INFORMATION THAT IS PROPRIETARY TO MOLEX  
INCORPORATED AND SHOULD NOT BE USED WITHOUT WRITTEN PERMISSION

6

5

4

3

2

1

E

E

D

D

C

C

B

B

A

A