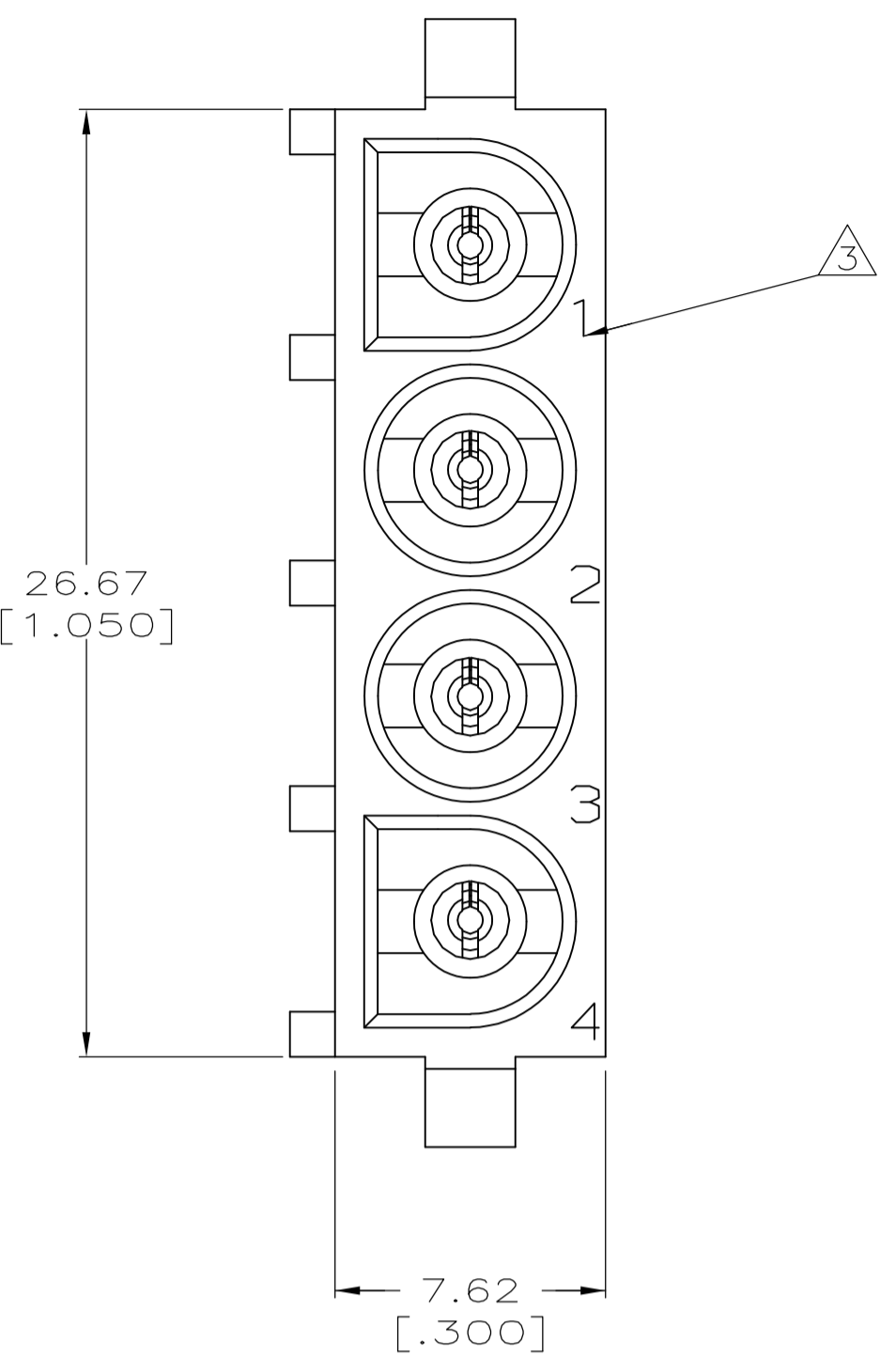
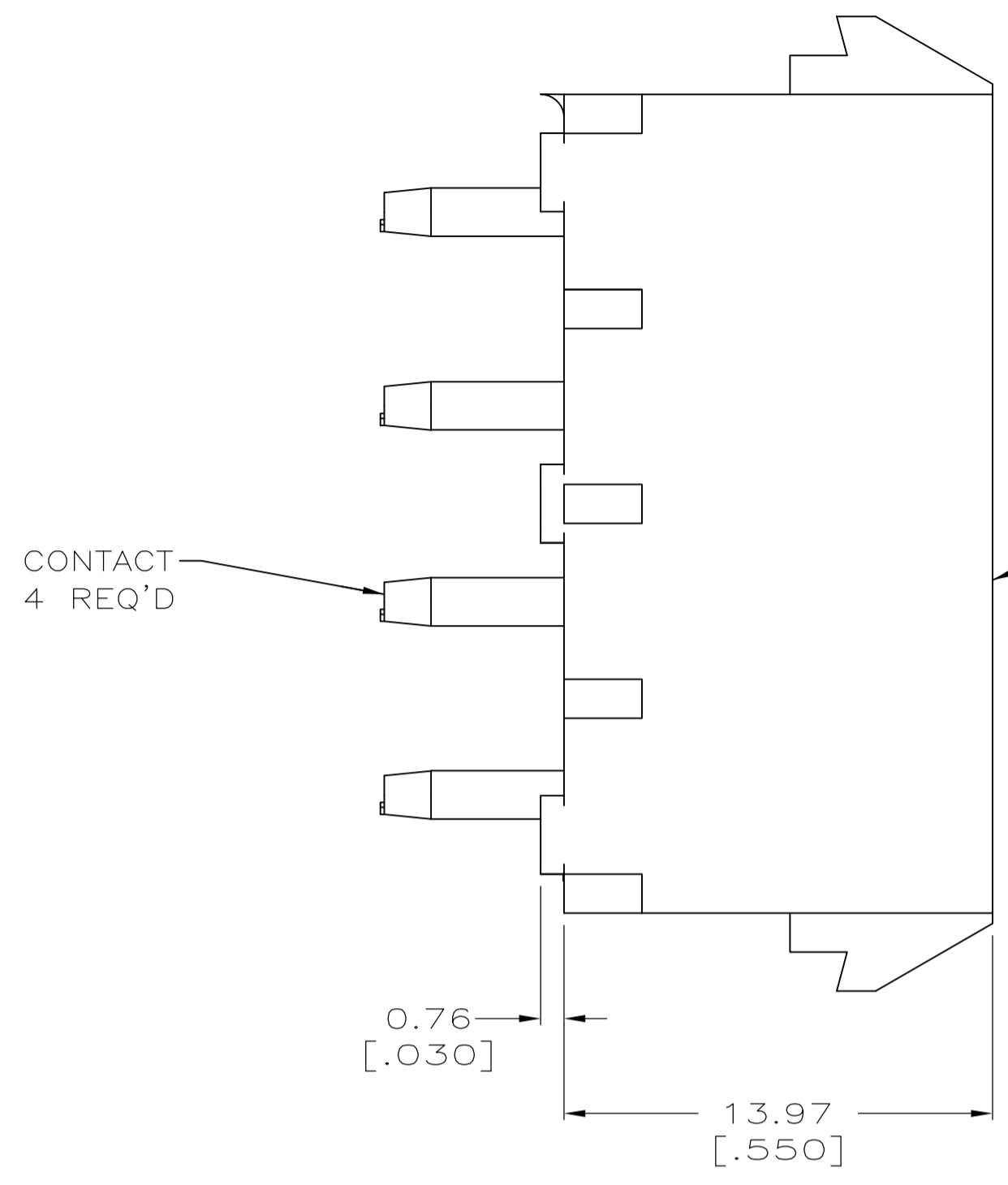
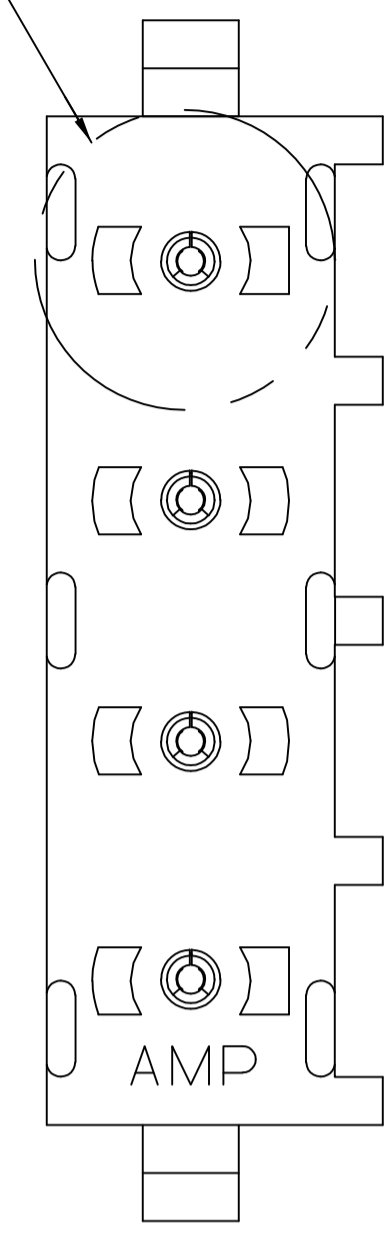
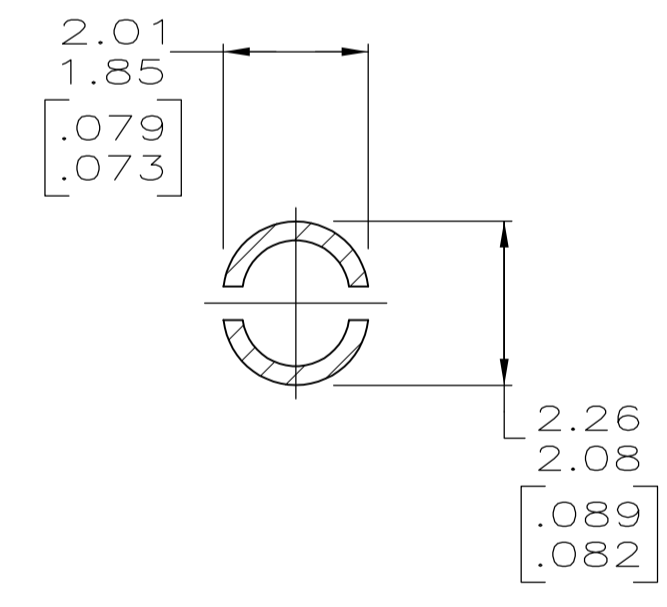
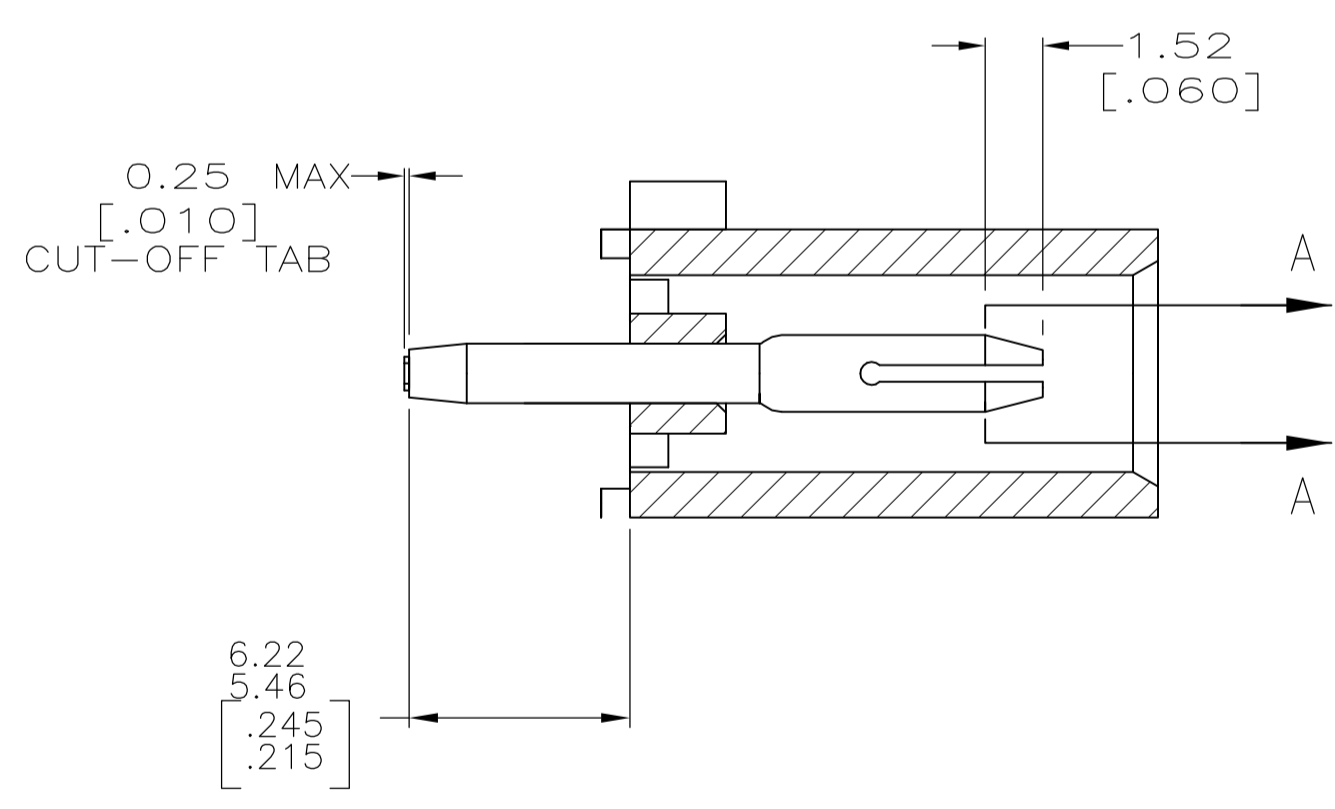


| LOC |     | DIST                  |          | REVISIONS |      |  |  |
|-----|-----|-----------------------|----------|-----------|------|--|--|
| P   | LTR | DESCRIPTION           | DATE     | DNW       | APVD |  |  |
| B   |     | REV PER ECR 10-018921 | 14SEPT10 | JR        | TM   |  |  |

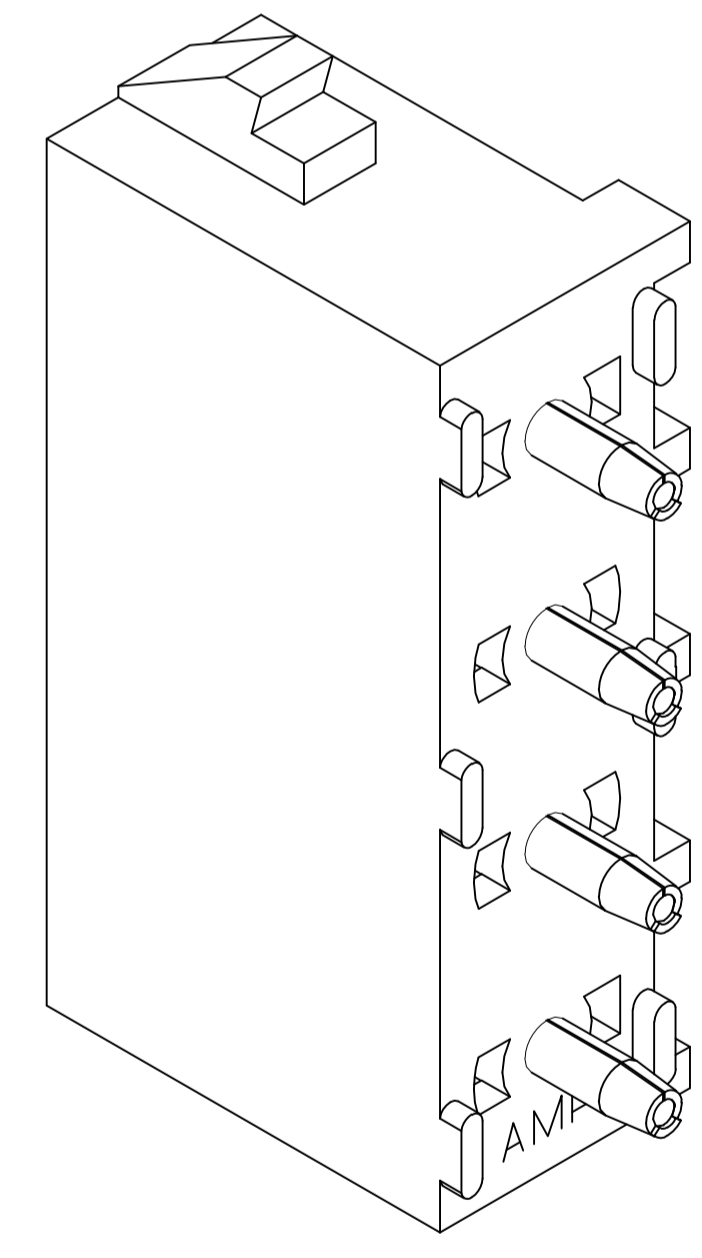
SEE DETAIL A



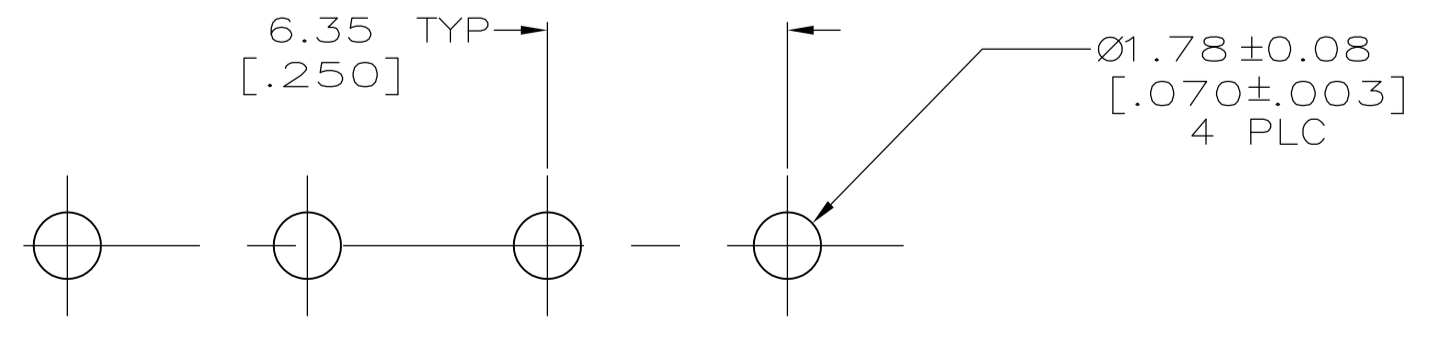
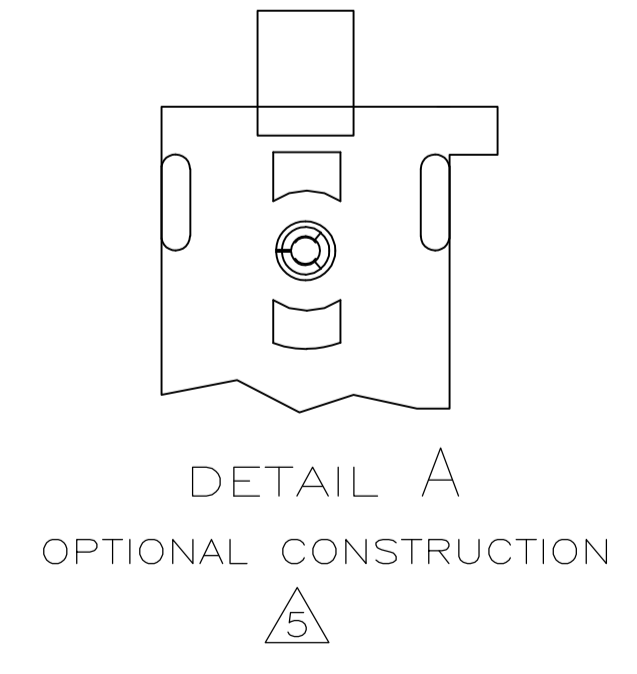
- PARTS COMPLY TO AMP SOLDERABILITY SPECIFICATION 109-11-3.
- △ DRAIN HOLES LOCATED AS SHOWN. OPTIONAL CONSTRUCTION - ALL DRAIN HOLES LOCATED 90° AS SHOWN IN DETAIL A.
- △ CIRCUIT IDENTIFICATION CHARACTERS ARE ADJACENT TO THE INDICATED CAVITIES, BUT LOCATION AND ORIENTATION MAY DIFFER FROM PRINT.
- DIMENSIONS IN BRACKETS ARE IN INCHES.
- FLAMMABILITY V2 FOR THICKNESS 0.38mm, 1.5mm, and 3.0mm PER IEC 60695-11-10.
- GLOW-WIRE FLAMMABILITY (GWI) 800°C FOR THICKNESS 0.38mm AND 0.75mm PER IEC 60695-2-12.
- GLOW-WIRE FLAMMABILITY (GWI) 960°C FOR THICKNESS 1.5mm AND 3.0mm PER IEC 60695-2-12.
- GLOW-WIRE IGNITION (GWIT) 825°C FOR THICKNESS 0.38mm, 0.75mm, 1.5mm AND 3.0mm PER IEC 60695-2-13.



SECTION A-A  
SCALE 10:1



3-DIMENSIONAL MODEL  
NTS



RECOMMENDED MOUNTING HOLE PATTERN  
FOR 1.57 [.062] THICK P.C. BOARD

|  |  |   |  |  |  |
|--|--|---|--|--|--|
| PHOSPHOR BRONZE, PRE-TIN               |  | NYLON, UL94V-2, NATURAL                             |  | 1586966-1  |  |
| PIN CONTACT MATERIAL AND FINISH        |  | HOUSING MATERIAL                                    |  | PART NUMBER  |  |
| THIS DRAWING IS A CONTROLLED DOCUMENT. |  | DIN K. WHITAKER 07AJG2007<br>CHK D. COLEY 07AJG2007 |  | Tyco Electronics Corporation<br>Greensboro, NC 27409 |  |
| DIMENSIONS: mm [INCHES]                |  | TOLERANCES UNLESS OTHERWISE SPECIFIED:              |  | NAME: D. COLEY 07AJG2007                             |  |
| 0 PLC ± -                              |  | 1 PLC ± -   |  | PRODUCT SPEC   |  |
| 2 PLC ± 0.13 [.005]                    |  | 3 PLC ± -   |  | APPLICATION SPEC                                     |  |
| 4 PLC ± -                              |  | ANGLES ± ± 0°30'                                    |  | SIZE: A1   |  |
| MATERIAL: SEE TABLE                    |  | FINISH: SEE TABLE                                   |  | WEIGHT: -  |  |
|  |  |   |  | CUSTOMER DRAWING                                     |  |
|  |  |   |  | SCALE: 5:1   |  |
|  |  |   |  | SHEET: 1 OF 1  |  |
|  |  |   |  | REV: B   |  |

