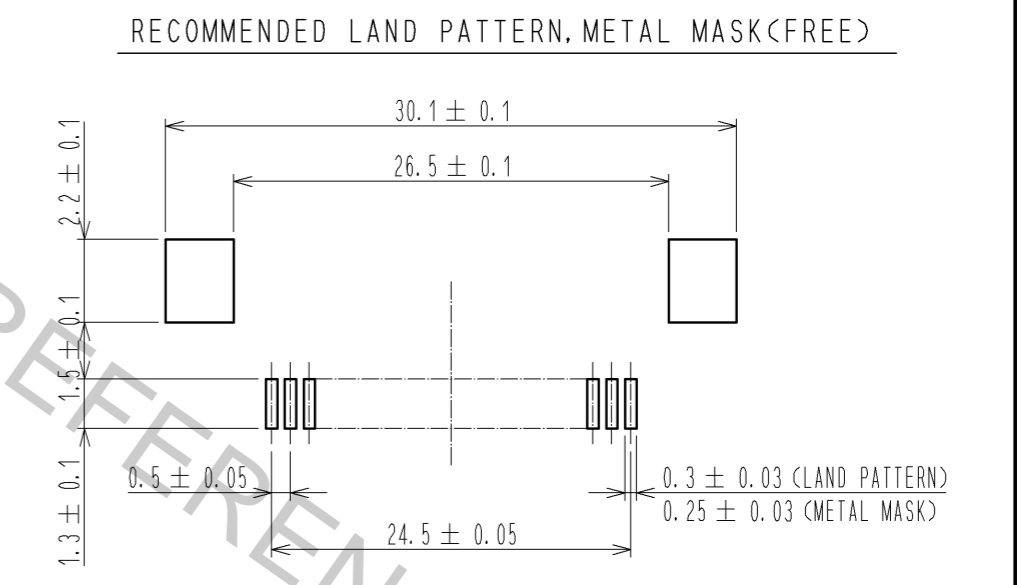
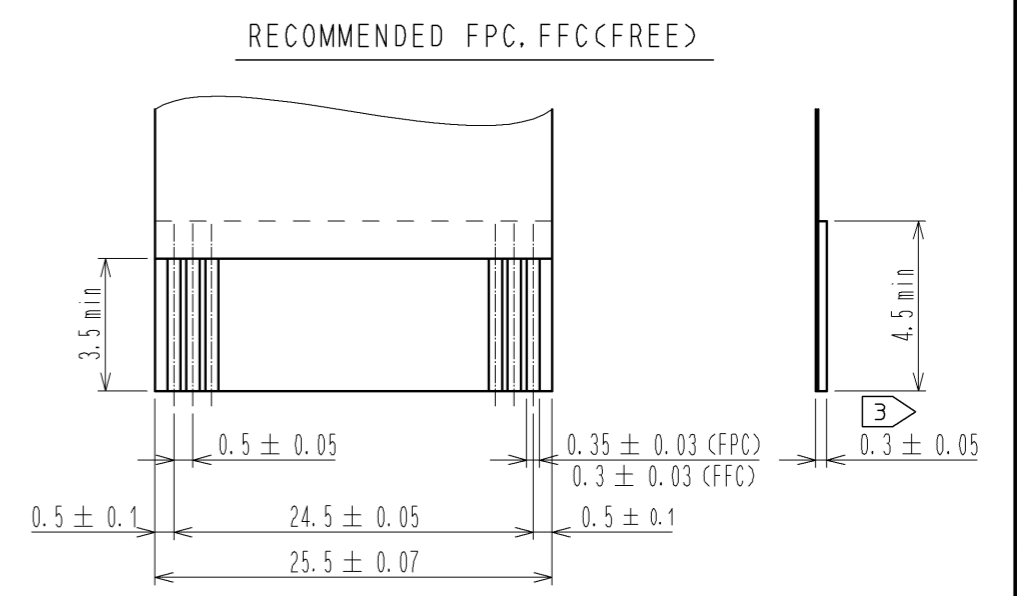


- NOTE
- ① REFERENCE IS A.
  - ② LEAD CO-PLANARITY SHALL BE 0.1 MAX.
  - ③ THICKNESS OF SUPPORTING TAPE SHALL BE 0.188(7.5mil) MIN.
  - ④ PREVENTIVE SINK MARK (DEPTH 0.05) IS INDICATED.



RECOMMENDED METAL MASK THICKNESS  $t=0.15$

NO.	MATERIAL	FINISH	REMARKS	NO.	MATERIAL	FINISH	REMARKS
4	BRASS	TIN PLATING	1μmMIN OVER NICKEL 1μmMIN.	8	(CONNECTOR)		
3	PHOSPHOR BRONZE	GOLD PLATING	0.05μmMIN OVER NICKEL 1μmMIN.	7	POLYSTYRENE		
2	PPS	(DEEP BROWN)	UL94V-0	6	POLYESTER		
1	POLYAMIDE	(BEIGE)	UL94V-0	5	POLYSTYRENE		

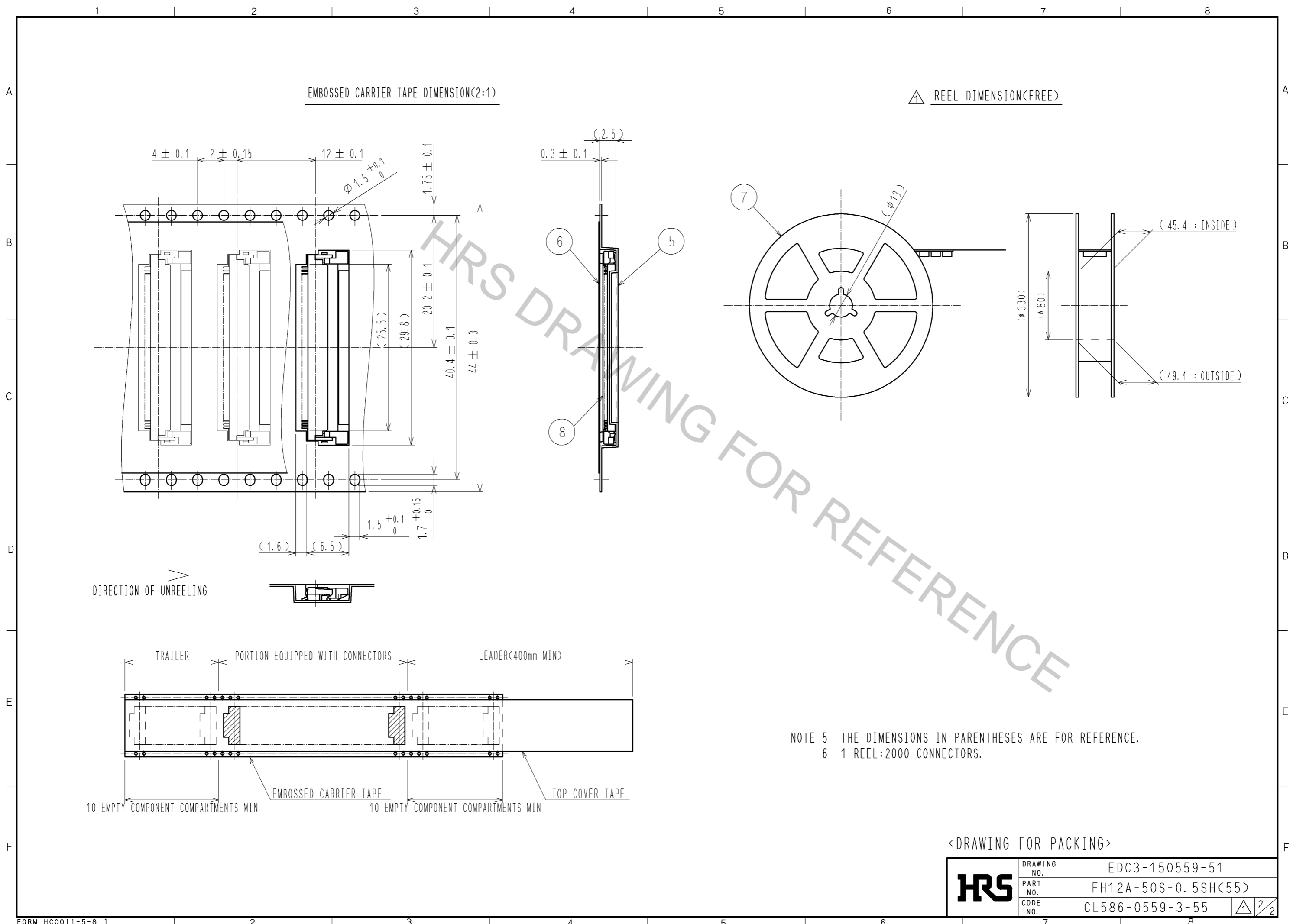
  

UNITS	SCALE	COUNT	DESCRIPTION OF REVISIONS	DESIGNED	CHECKED	DATE
mm	5 : 1	1	DIS-F-002766	MK. YASUMI	HS. SAKAMOTO	09.11.17

APPROVED	DESIGNED	DRAWING NO.
MO. ISHIDA	MK. YASUMI	EDC3-150559-51
CHECED	DESIGNED	PART NO.
RI. TAKAYASU	TH. MURAI	FH12A-50S-0.5SH(55)
DESIGNED	DESIGNED	CODE NO.
TH. MURAI	TH. MURAI	CL586-0559-3-55
DRAWN	DESIGNED	
TH. MURAI	TH. MURAI	

Apr.1.2017 Copyright 2017 HIROSE ELECTRIC CO., LTD. All Rights Reserved.



<b>HRS</b>	DRAWING NO.	EDC3-150559-51
	PART NO.	FH12A-50S-0.5SH(55)
	CODE NO.	CL586-0559-3-55
		2/2