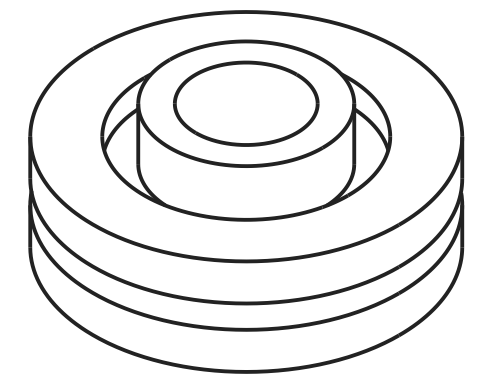
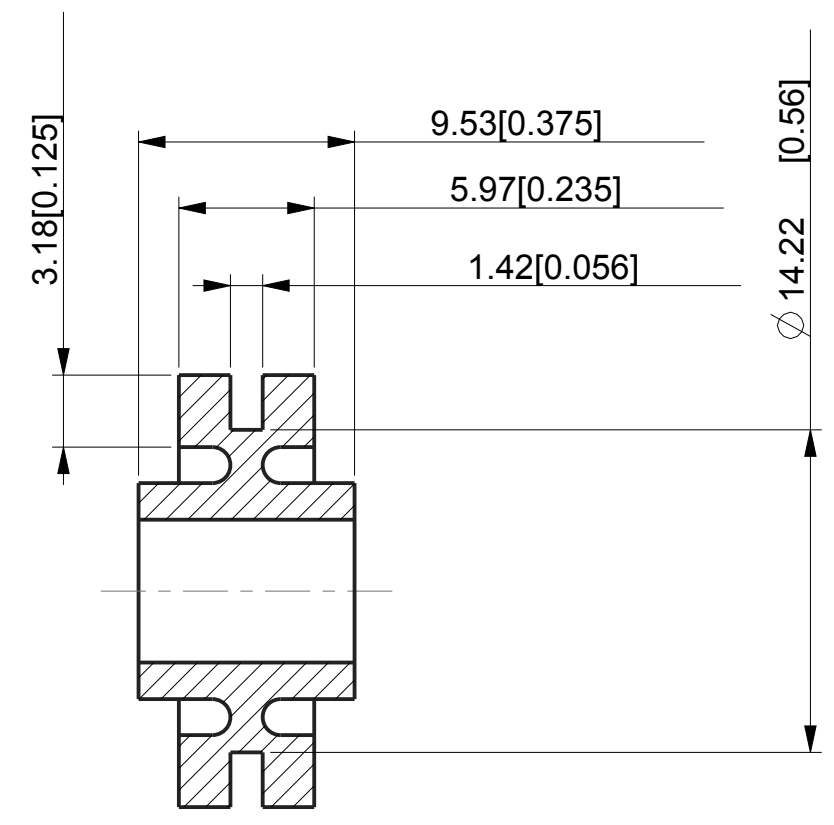
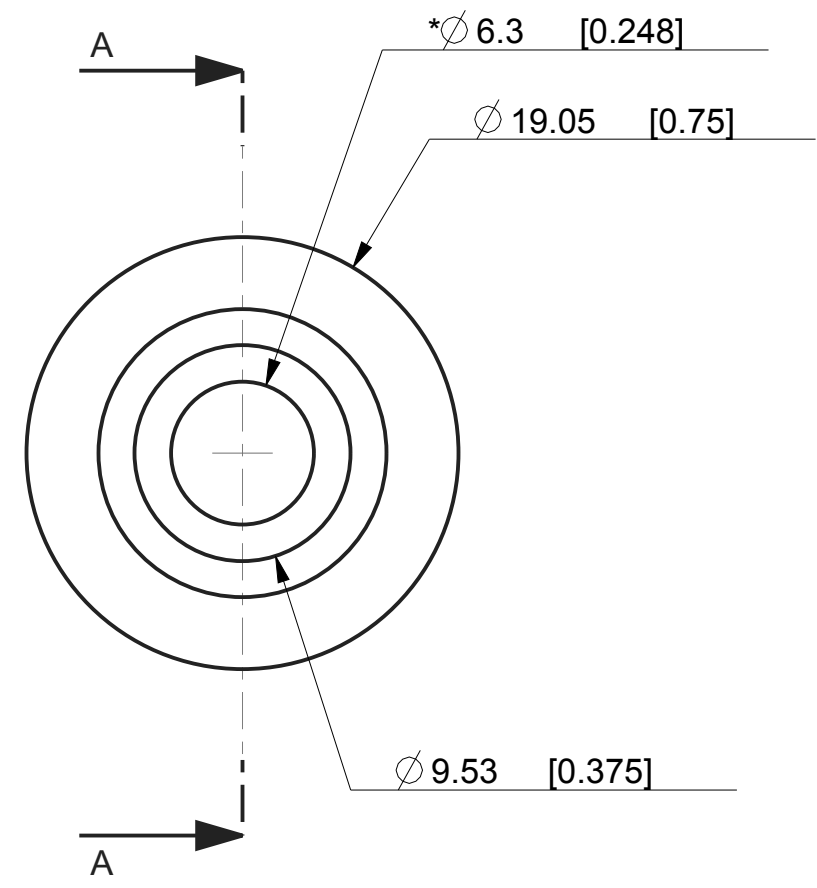




REVISIONS				
DRAWN	REV	DESCRIPTION	DATE	APPROVED
-	-	Original print with C-1002, drawn by DH, April 1998 C-1100, drawn by DH, May 1998 New format with SL material, drawn by PM, 10/22/2007	-	JS
TC	01	Updated format and combined all materials to one spec.	4-27-10	JS
KP/TC	02	UPDATED FORMAT (EAR LOGO)	9-8-11	MS



SECTION A-A

GROMMET MATERIAL	SEE PAGE
VERSADAMP	1
ISODAMP	1
ISOLOSS	2

G-601-C8012	C-8012
G-601-C8002	C-8002
G-601-C8001	C-8001
G-601-V2325	V-2325
G-601-3	C-1100
G-601-2	C-1105
G-601-1	C-1002
PART NUMBER	MATERIAL

DIM RANGE	VERSADAMP & ISODAMP TOL
0<DIM<=2 [.078]	± 0.15 [.006]
2 [.078]<DIM<=25 [.98]	± 0.25 [.010]
25 [.98]<DIM<=50 [1.969]	± 0.4 [.016]
50 [1.969]<DIM	± 0.6 [.024]

5. FOR ISOLOSS MATERIAL, USE THE TOLERANCE TABLE ON PAGE 2.
4. FOR VERSADAMP AND ISODAMP MATERIAL, USE THE TOLERANCE TABLE ON PAGE 1.
3. MAX DRAFT 2°.
2. CRITICAL DIMENSIONS SHALL HAVE Cpk VALUES >= 1.33 WITH ONGOING SPC DATA REQUIRED.
1. CRITIAL DIMENSIONS ARE MARKED WITH "***".

NOTES:

UNLESS OTHERWISE SPECIFIED UNITS ARE: MM [IN] TOLERANCE FOR ANGLES: ±1.0°	MATERIAL: SEE TABLE ON LEFT	AEARO TECHNOLOGIES LLC * a 3M company		
	QUALITY CONTROL: MUST COMPLY WITH E-A-R SPECIALTY COMPOSITES SUPPLIER QUALITY MANUAL REQUIREMENTS	TITLE GROMMET - SHEAR		
ALLOWABLE FLASH: 0.12 MM [0.005]	GATE: ±0.15 MM [0.006]	NOTES: ANY FEATURE NOT DIMENSIONED IN PRINT MUST BE VISIBLY PRESENT, UTILIZE 3D CAD FOR CREATION	SIZE B	DRAWING NO. G-601-X
			PAGE NO. 1 OF 2	

1

2

3

4

REVISIONS

D

D

C

C

B

B

A

A

				UNLESS OTHERWISE SPECIFIED UNITS ARE: MM [IN] TOLERANCE FOR ANGLES: $\pm 1.0^\circ$	MATERIAL:	E-A-R SPECIALTY COMPOSITES		
					ALLOWABLE FLASH: 0.3 MM [0.012]	SEE TABLE ON LEFT	TITLE	
				GATE:	QUALITY CONTROL: MUST COMPLY WITH E-A-R SPECIALTY COMPOSITES SUPPLIER QUALITY MANUAL REQUIREMENTS	GROMMET - SHEAR		
						NOTES: ANY FEATURE NOT DIMENSIONED IN PRINT MUST BE VISIBLY PRESENT, UTILIZE 3D CAD FOR CREATION	SIZE	DRAWING NO.
G-601-SL60300	SL-60300	DIM RANGE	ISOLOSS TOL			B	G-601-X	2 OF 2
G-601-SL50300	SL-50300	0<DIM<=10[.394]	± 0.15 [.006]					
G-601-SL35300	SL-35300	10[.394]<DIM<=20[.787]	± 0.2 [.008]					
G-601-SL20300	SL-20300	20[.787]<DIM<=50[1.969]	± 0.25 [.010]					
PART NUMBER	MATERIAL	50[1.969]<DIM<=80[3.150]	± 0.35 [.014]					
		80[3.150]<DIM	$\pm .5\%$					

1

2

3

4