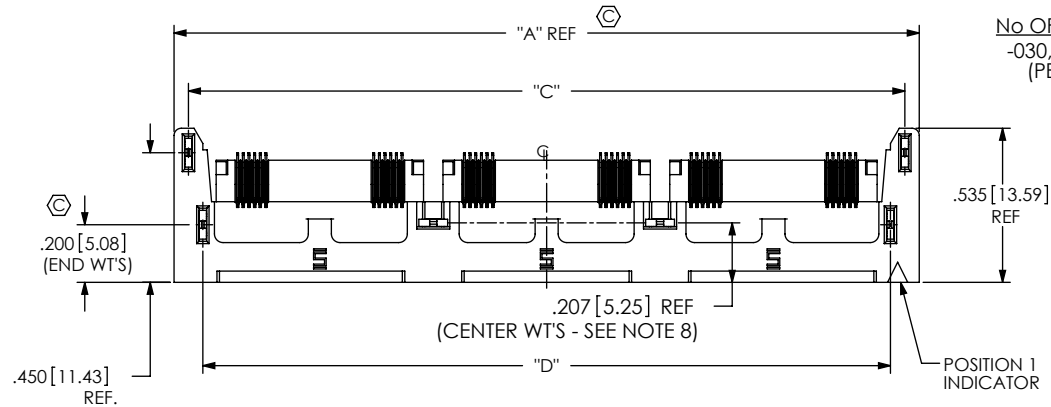


DO NOT SCALE FROM THIS PRINT

QSH-XXX-XX-X-D-RA-XXX



No. OF POSITIONS  
-030, -060, -090  
(PER ROW)

LEAD STYLE  
-01  
(SEE NOTE 6)

PLATING SPECIFICATION  
SEE SHEET 2, TABLE 4

ROW SPECIFICATION  
-D: DOUBLE  
(USE QSH-30-01-D-XX-RA)

OPTION

- GP: GUIDE POST (SEE FIG. 3, SHT 6)
- \* -LS1: LOCKING SCREW (SEE FIG. 2, SHT 5) (FOR MATING WITH QTH-...-RA-..LS1)
- K: KAPTON PAD (SEE FIG. 4, SHEET 6) (USE K-DOT-256-375-005)

-RA: RIGHT ANGLE

(\* = NOT TOOLED)

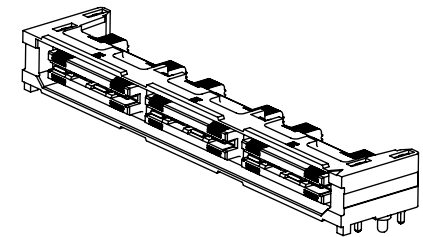
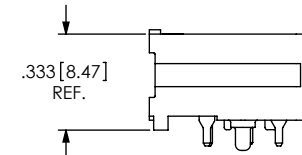
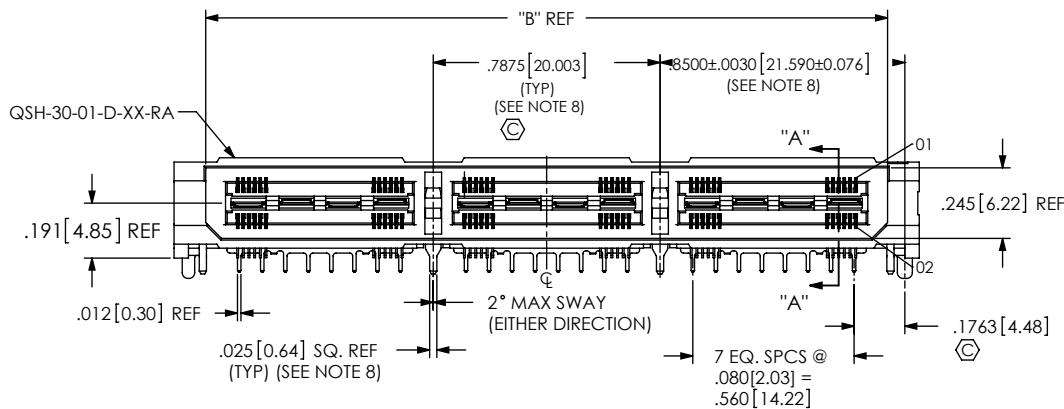
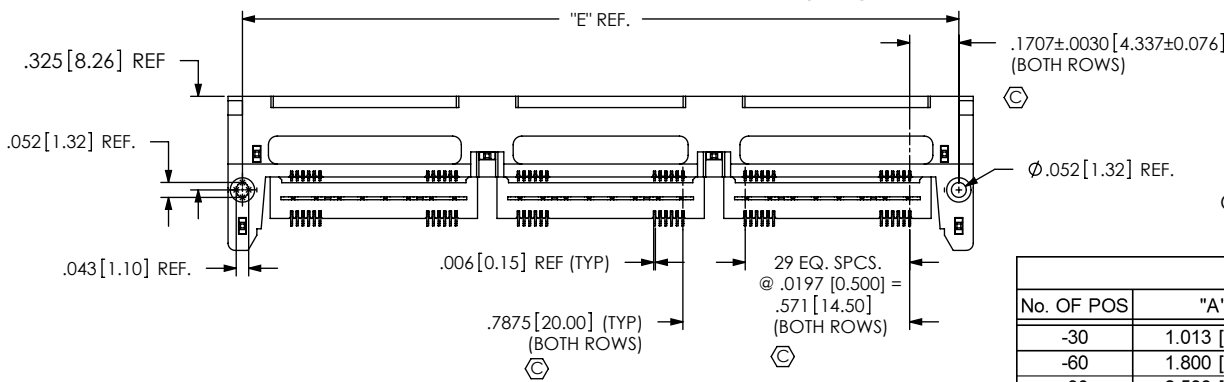


FIG 1  
QSH-090-01-X-D-RA SHOWN



No. OF POS	"A"	"B"	"C"	"D"	"E"
-30	1.013 [25.72]	0.793 [20.13]	.913 [23.18]	.813 [20.64]	0.913 [23.18]
-60	1.800 [45.72]	1.580 [40.13]	1.700 [43.18]	1.600 [40.64]	1.700 [43.18]
-90	2.588 [65.72]	2.368 [60.13]	2.488 [63.18]	2.388 [60.64]	2.488 [63.18]

NOTES:

1. Ⓢ REPRESENTS A CRITICAL DIMENSION.
2. BURR ALLOWANCE: .0010 MAX.
3. MINIMUM PUSHOUT FORCE: 6 OZ.
4. IF NEEDED, -L PLATING CAN BE SUBSTITUTED FOR -F PLATING.
5. IM-1G18-01-2-XX RETENTION TO BE 1.0 LBS. MINIMUM PRIOR TO SECOND ROW FILL.
6. DESIGNED FOR USE WITH A .062 OR .093 THICK PCB
7. ASSEMBLIES TO BE PACKAGED IN TRAYS.
8. CENTER WELD TABS ARE NOT AVAILABLE ON -030 POSITION.
9. USE -Z- DATUM ZONE ONLY FOR MEASUREMENTS.

UNLESS OTHERWISE SPECIFIED, DIMENSIONS ARE IN INCHES. TOLERANCES ARE:  
DECIMALS ANGLES  
.XX: ±.01 [0.3]  
.XXX: ±.005 [0.13]  
.XXXX: ±.0020 [0.051]

PROPRIETARY NOTE

THIS DOCUMENT CONTAINS INFORMATION CONFIDENTIAL AND PROPRIETARY TO SAMTEC, INC. AND SHALL NOT BE REPRODUCED OR TRANSFERRED TO OTHER DOCUMENTS OR DISCLOSED TO OTHERS OR USED FOR ANY PURPOSE OTHER THAN THAT WHICH IT WAS OBTAINED WITHOUT THE EXPRESSED WRITTEN CONSENT OF SAMTEC, INC.



520 PARK EAST BLVD, NEW ALBANY, IN 47150  
PHONE: 812-944-6733 FAX: 812-948-5047  
e-Mail info@SAMTEC.com code 55322

MATERIAL: DO NOT SCALE DRAWING SHEET SCALE: 2:1  
INSULATOR: LCP UL94V-0, COLOR BLACK  
TERMINAL, GROUND PLANE & WELD TAB: PHOS BRONZE

DESCRIPTION:  
.50mm DOUBLE ROW RIGHT ANGLE SOCKET STRIP

DWG. NO.  
QSH-XXX-XX-X-D-RA-XXX

BY: DUKES Z 01/31/2010 SHEET 1 OF 6

TABLE 2			
No OF POSITIONS	COPLANARITY	STRAIGHTNESS ROW 1	STRAIGHTNESS ROW 1
-030 THRU -090	.004[0.10]	.004[0.10]	.004[0.10]

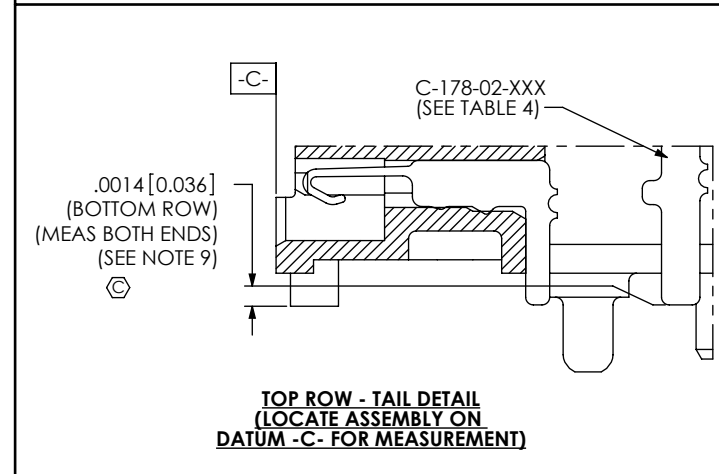
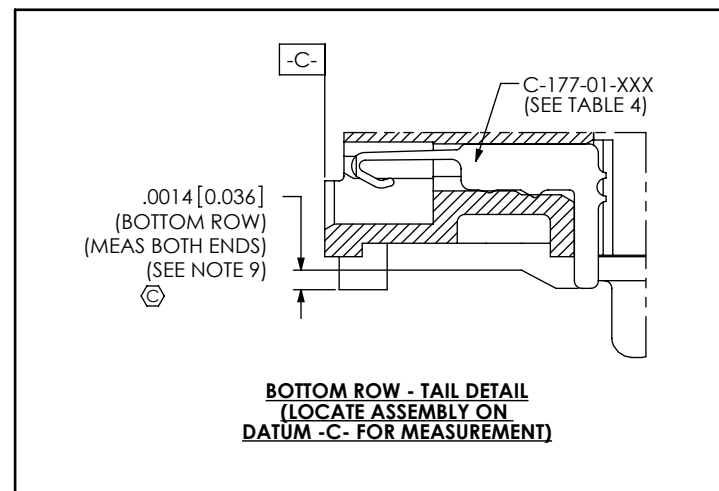
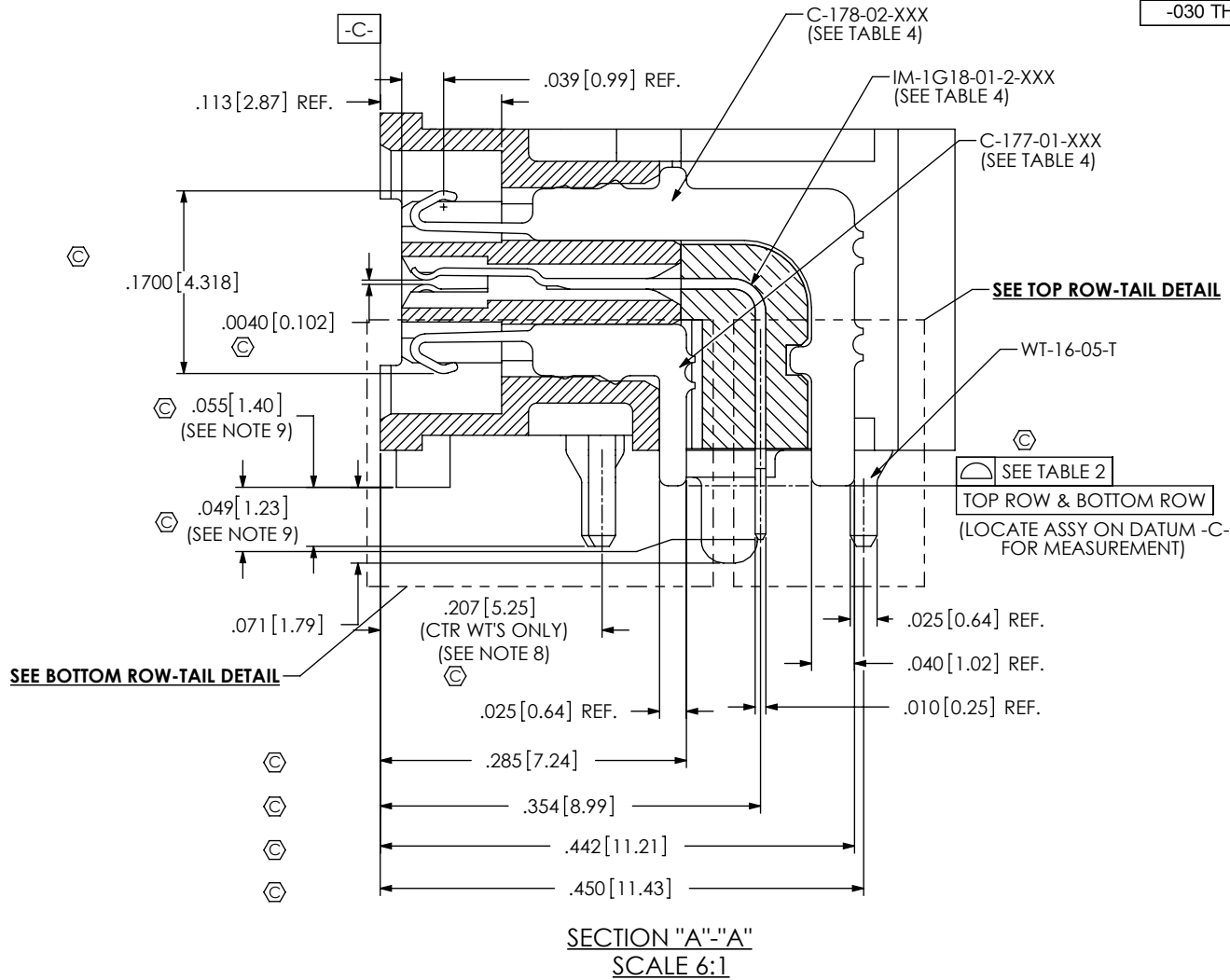


TABLE 4: PLATING SPECIFICATIONS

	C-177-01-XXX CONTACT	C-178-02-XXX CONTACT	IM-1G18-01-2-X GROUND PLANE	WT-16-05-T WELD TAB
-F	3 - 5µ" FLASH GOLD ON CONTACT, MATTE TIN TAIL	3 - 5µ" FLASH GOLD CONTACT, MATTE TIN TAIL	3µ" MIN. FLASH GOLD CONTACT, MATTE TIN TAIL	MATTE TIN
-L	10µ" MIN. LIGHT GOLD CONTACT, MATTE TIN TAIL	10µ" MIN. LIGHT GOLD CONTACT, MATTE TIN TAIL	10µ" MIN. LIGHT GOLD CONTACT, MATTE TIN TAIL	MATTE TIN

PROPRIETARY NOTE

THIS DOCUMENT CONTAINS INFORMATION CONFIDENTIAL AND PROPRIETARY TO SAMTEC, INC. AND SHALL NOT BE REPRODUCED OR TRANSFERRED TO OTHER DOCUMENTS OR DISCLOSED TO OTHERS OR USED FOR ANY PURPOSE OTHER THAN THAT WHICH IT WAS OBTAINED WITHOUT THE EXPRESSED WRITTEN CONSENT OF SAMTEC, INC.

DO NOT SCALE DRAWING

SHEET SCALE: 6:1



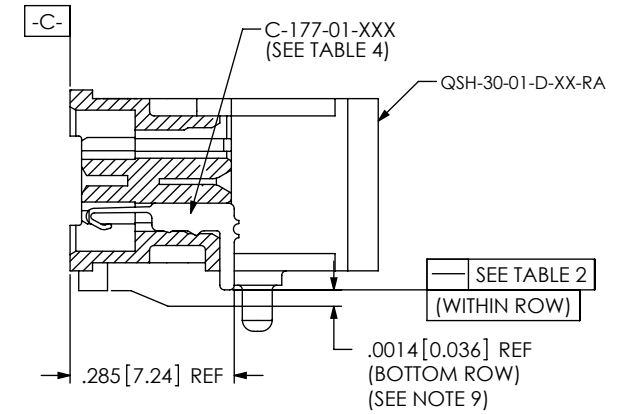
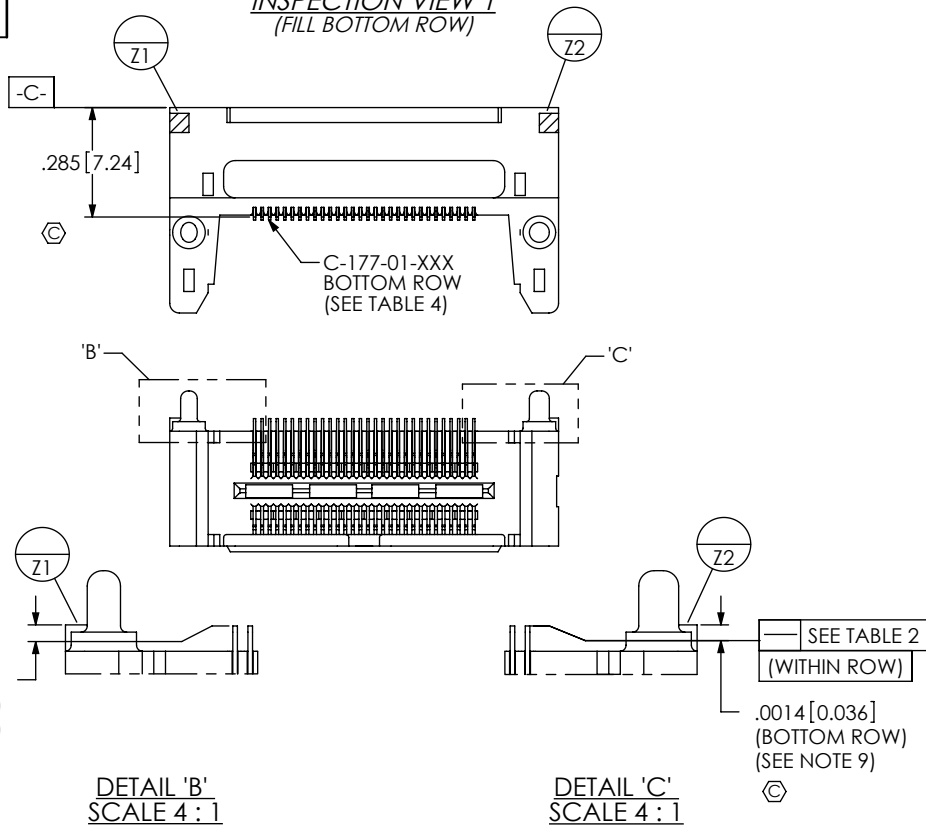
520 PARK EAST BLVD. NEW ALBANY, IN 47150  
 PHONE: 812-944-6733 FAX: 812-948-5047  
 e-Mail: info@SAMTEC.com code 55322

DESCRIPTION:  
 .50mm DOUBLE ROW RIGHT ANGLE SOCKET STRIP

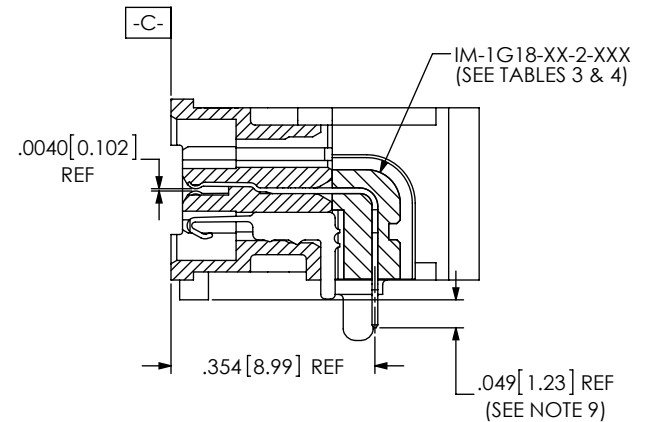
DWG. NO.  
**QSH-XXX-XX-X-D-RA-XXX**

BY: DUKES Z 01/31/2010 SHEET 2 OF 6

**INSPECTION VIEW 1**  
(FILL BOTTOM ROW)

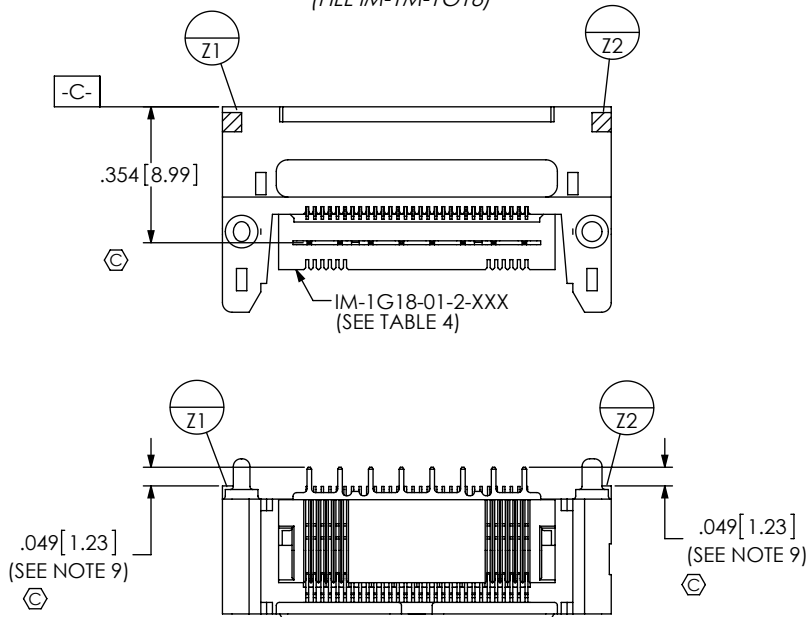


**IN-PROCESS 1**  
(FILL BOTTOM ROW)  
(SEE INSPECTION VIEW 1 FOR ORIENTATION AND CPC'S)



**IN-PROCESS 2**  
(FILL IM-1G18)  
(SEE INSPECTION VIEW 2 FOR ORIENTATION AND CPC'S)

**INSPECTION VIEW 2**  
(FILL IM-1M-1G18)



**PROPRIETARY NOTE**

THIS DOCUMENT CONTAINS INFORMATION CONFIDENTIAL AND PROPRIETARY TO SAMTEC, INC. AND SHALL NOT BE REPRODUCED OR TRANSFERRED TO OTHER DOCUMENTS OR DISCLOSED TO OTHERS OR USED FOR ANY PURPOSE OTHER THAN THAT WHICH IT WAS OBTAINED WITHOUT THE EXPRESSED WRITTEN CONSENT OF SAMTEC, INC.

DO NOT SCALE DRAWING

SHEET SCALE: 6:1



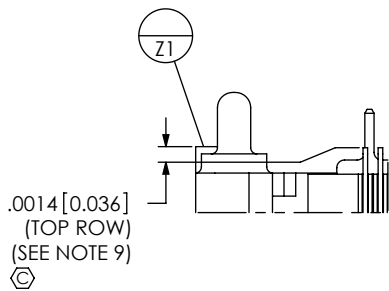
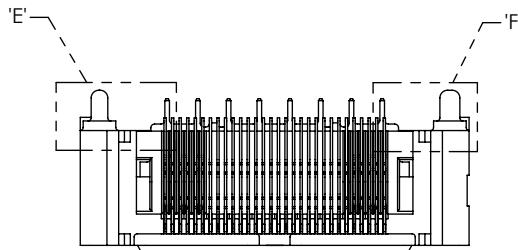
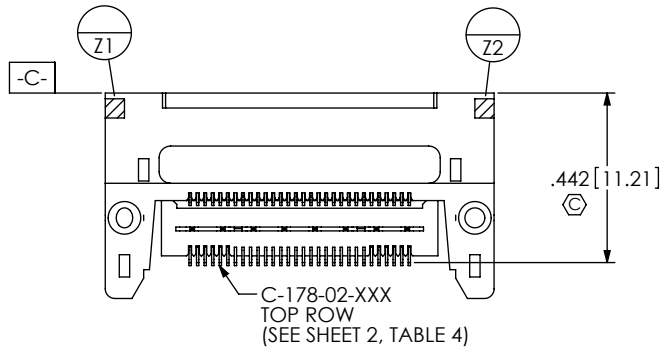
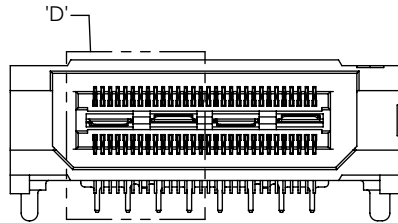
520 PARK EAST BLVD, NEW ALBANY, IN 47150  
PHONE: 812-944-6733 FAX: 812-948-5047  
e-Mail: info@SAMTEC.com code 55322

DESCRIPTION:  
.50mm DOUBLE ROW RIGHT ANGLE SOCKET STRIP

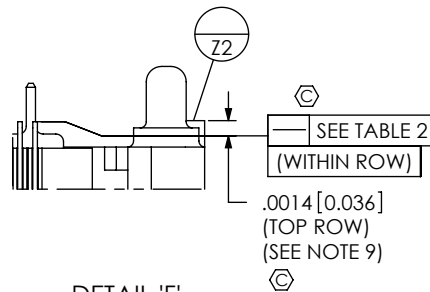
DWG. NO.  
**QSH-XXX-XX-X-D-RA-XXX**

BY: DUKES Z 01/31/2010 SHEET 3 OF 6

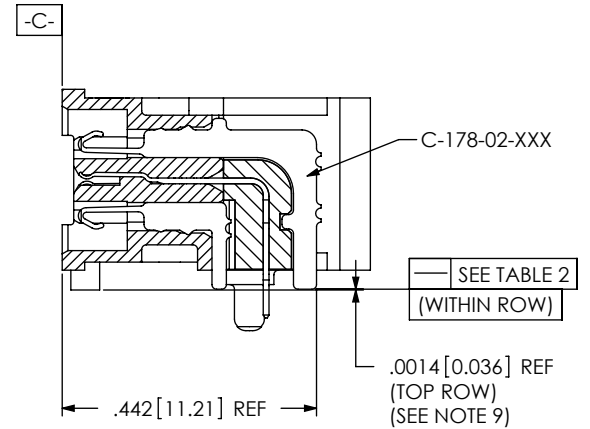
**INSPECTION VIEW 3**  
(FILL TOP ROW)



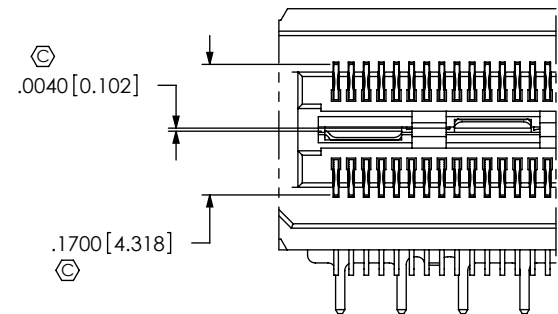
**DETAIL 'E'**  
SCALE 4 : 1



**DETAIL 'F'**  
SCALE 4 : 1



**IN-PROCESS 3**  
(FILL TOP ROW)  
(SEE INSPECTION VIEW 3 FOR ORIENTATION AND CPC'S)



**DETAIL 'D'**  
SCALE 4 : 1

**PROPRIETARY NOTE**

THIS DOCUMENT CONTAINS INFORMATION CONFIDENTIAL AND PROPRIETARY TO SAMTEC, INC. AND SHALL NOT BE REPRODUCED OR TRANSFERRED TO OTHER DOCUMENTS OR DISCLOSED TO OTHERS OR USED FOR ANY PURPOSE OTHER THAN THAT WHICH IT WAS OBTAINED WITHOUT THE EXPRESSED WRITTEN CONSENT OF SAMTEC, INC.

DO NOT SCALE DRAWING

SHEET SCALE: 6:1



520 PARK EAST BLVD, NEW ALBANY, IN 47150  
PHONE: 812-944-6733 FAX: 812-948-5047  
e-Mail: info@SAMTEC.com code 55322

DESCRIPTION:  
.50mm DOUBLE ROW RIGHT ANGLE SOCKET STRIP

DWG. NO.  
**QSH-XXX-XX-X-D-RA-XXX**

BY: DUKES Z 01/31/2010 SHEET 4 OF 6

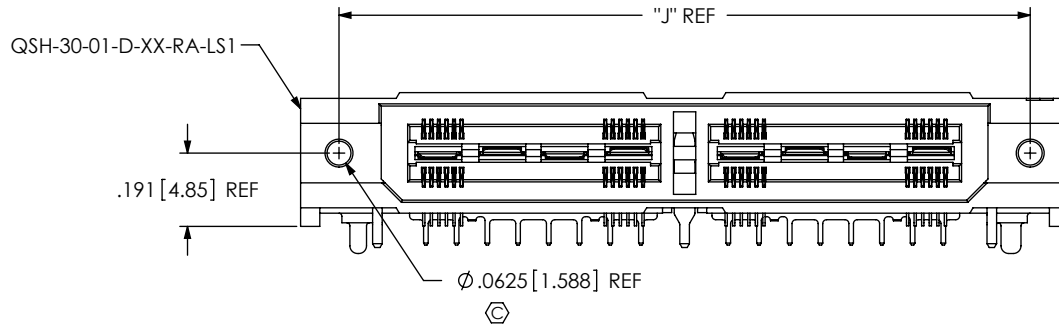
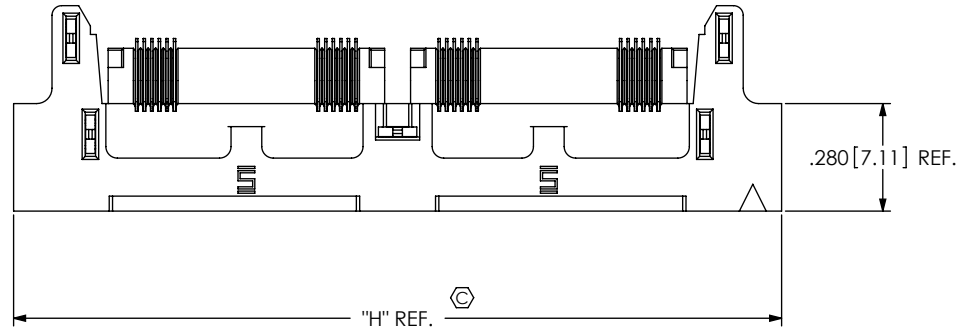



FIG 2  
 QSH-060-01-X-D-RA-LS1 SHOWN  
 (SAME AS FIG. 1, EXCEPT AS SHOWN)  
 (NOT TOOLED)

TABLE 5		
NO OF POS	"H"	"J"
-30	1.213 [30.80]	1.013 [25.72]
-60	2.000 [50.80]	1.800 [45.72]
-90	2.788 [70.80]	2.588 [65.72]

**PROPRIETARY NOTE**  
 THIS DOCUMENT CONTAINS INFORMATION  
 CONFIDENTIAL AND PROPRIETARY TO  
 SAMTEC, INC. AND SHALL NOT BE REPRODUCED  
 OR TRANSFERRED TO OTHER DOCUMENTS OR  
 DISCLOSED TO OTHERS OR USED FOR ANY  
 PURPOSE OTHER THAN THAT WHICH IT WAS  
 OBTAINED WITHOUT THE EXPRESSED WRITTEN  
 CONSENT OF SAMTEC, INC.

DO NOT SCALE DRAWING

SHEET SCALE: 2:1



520 PARK EAST BLVD, NEW ALBANY, IN 47150  
 PHONE: 812-944-6733 FAX: 812-948-5047  
 e-Mail info@SAMTEC.com code 55322

DESCRIPTION:  
 .50mm DOUBLE ROW RIGHT ANGLE SOCKET STRIP

DWG. NO.  
**QSH-XXX-XX-X-D-RA-XXX**

BY: DUKES Z 01/31/2010 SHEET 5 OF 6

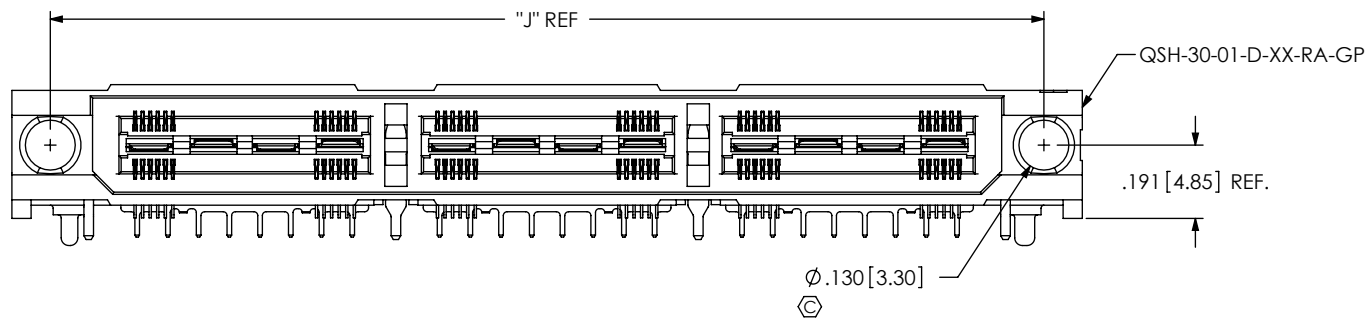
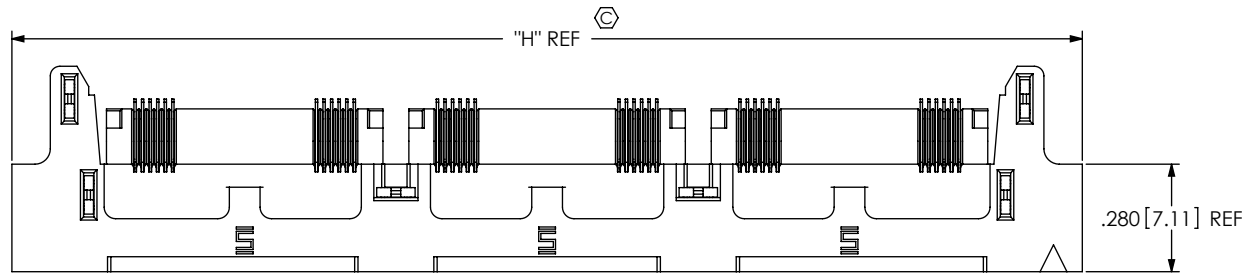


FIG 3  
QSH-090-01-X-D-RA-GP SHOWN  
(SAME AS FIG. 1, EXCEPT AS SHOWN)

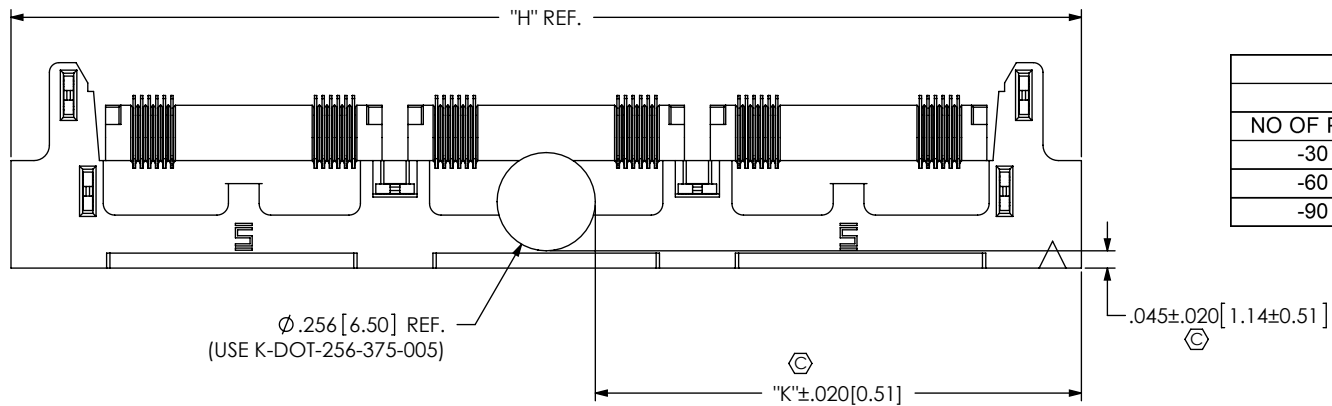



FIG 4  
QSH-090-01-X-D-RA-GP-K SHOWN  
(SAME AS FIG. 1, EXCEPT AS SHOWN)

TABLE 6				
NO OF POS	"K"			
	-GP		NON -GP	
-30	.478	[12.14]	.378	[9.60]
-60	.872	[22.15]	.772	[19.61]
-90	1.266	[32.16]	1.166	[29.62]

<p><b>PROPRIETARY NOTE</b> THIS DOCUMENT CONTAINS INFORMATION CONFIDENTIAL AND PROPRIETARY TO SAMTEC, INC. AND SHALL NOT BE REPRODUCED OR TRANSFERRED TO OTHER DOCUMENTS OR DISCLOSED TO OTHERS OR USED FOR ANY PURPOSE OTHER THAN THAT WHICH IT WAS OBTAINED WITHOUT THE EXPRESSED WRITTEN CONSENT OF SAMTEC, INC.</p> <p>DO NOT SCALE DRAWING</p> <p>SHEET SCALE: 1:0.666667</p>		
	<p>520 PARK EAST BLVD, NEW ALBANY, IN 47150 PHONE: 812-944-6733 FAX: 812-948-5047 e-Mail info@SAMTEC.com code 55322</p>	
	<p>DESCRIPTION: .50mm DOUBLE ROW RIGHT ANGLE SOCKET STRIP</p>	
	<p>DWG. NO. <b>QSH-XXX-XX-X-D-RA-XXX</b></p>	
<p>BY: DUKES Z 01/31/2010</p>		<p>SHEET 6 OF 6</p>