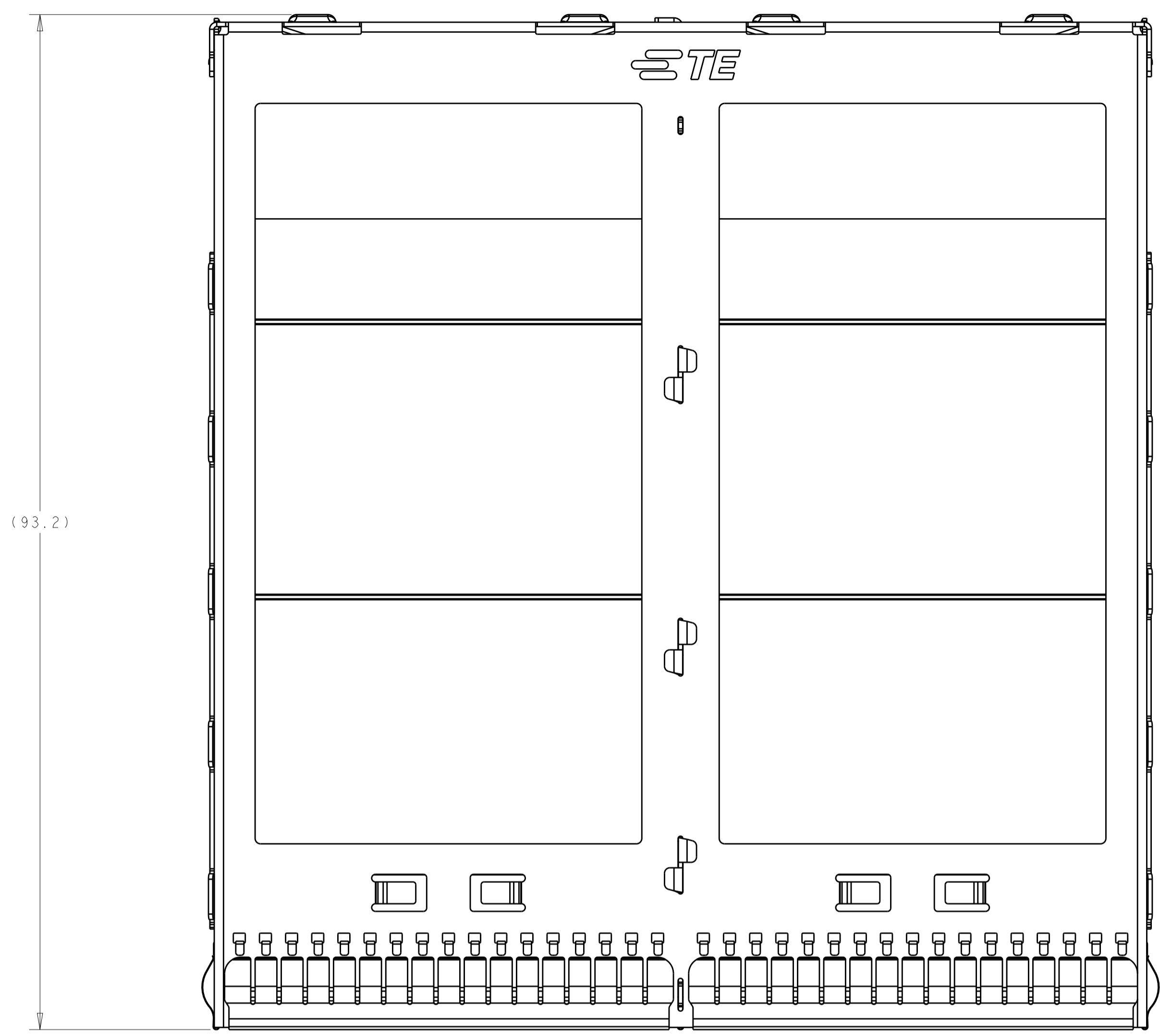
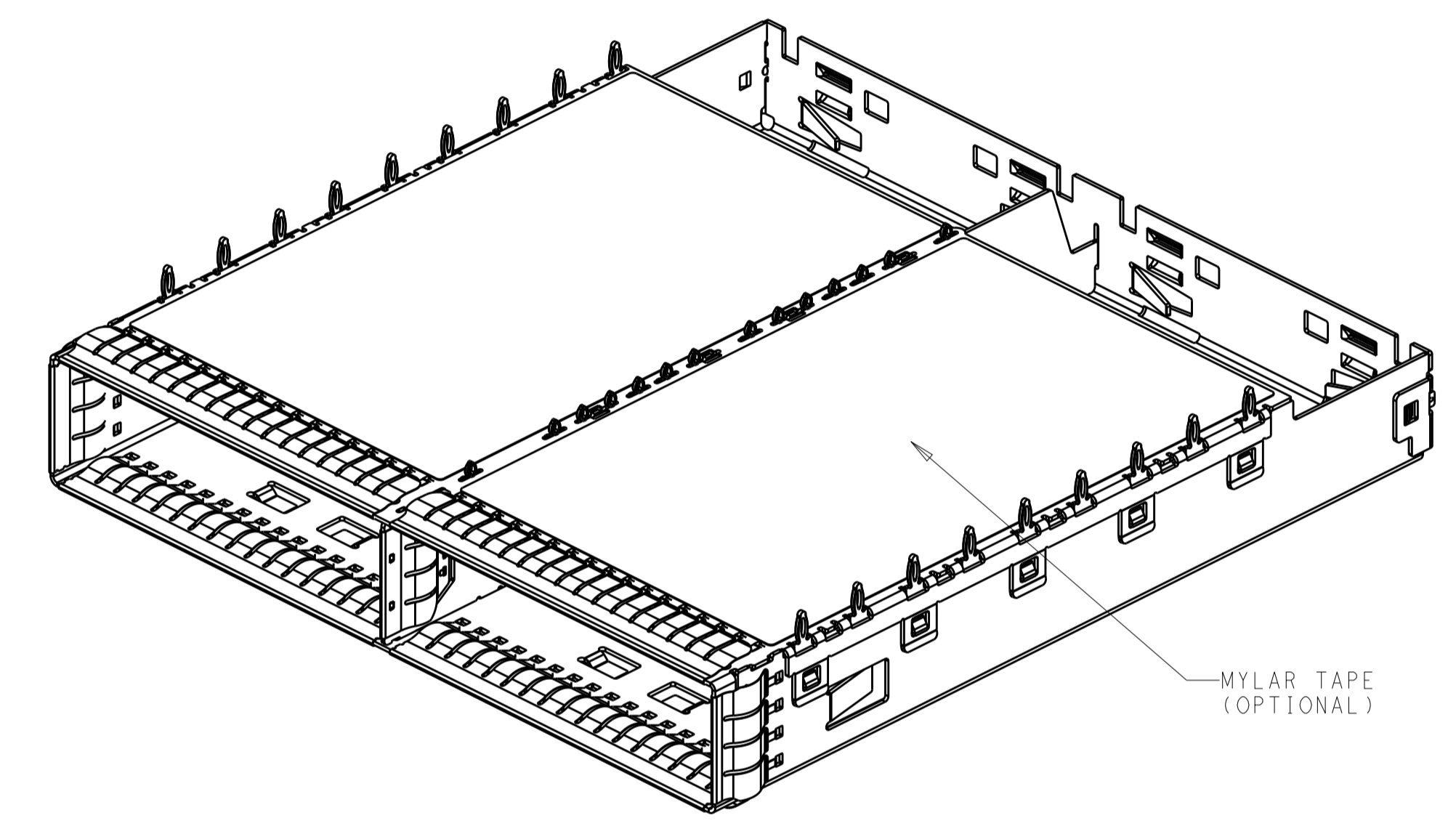


REVISIONS				
P.	LTH	DESCRIPTION	DATE	APPR
1		PRELIMINARY	21MAR2016	AD SH
2		ADD PRAT NUMBER	23MAR2016	AD SH
4		ADD NEW DASH NUMBER	18SEP2016	AD SH
5		ADD REAR RIVETING	08FEB2017	AD SH

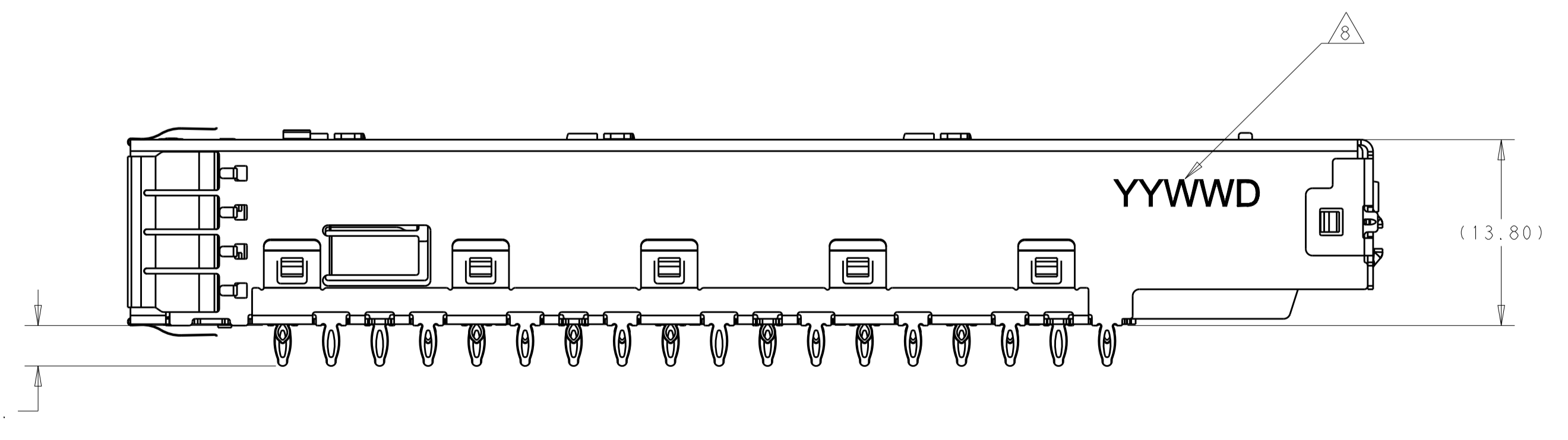
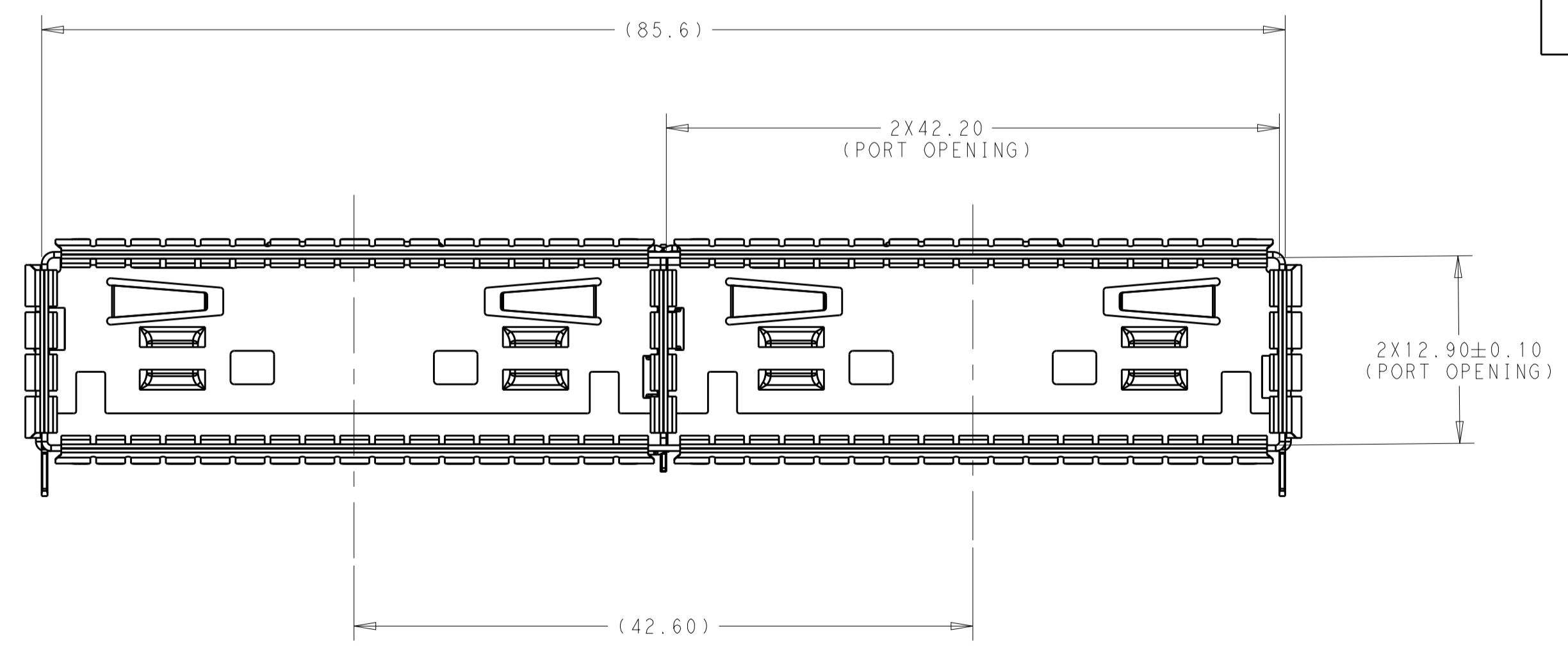


- 1 MATERIAL : CAGE :0.4MM THICK NICKEL SILVER ALLOY;
EMI SPRING: COPPER ALLOY;
- 2 FINISH: EMI SPRING 1.27um NICKEL PALTING OVER ALL;
3.MATES WITH CFP MSA COMPLIANT TRANSCEIVERS.
- 4 DATUM AND BASIC DIMENSION ESTABLISHED BY CUSTOMER.
5.MINIMUM PC BOARD THICKNESS: SIGLE SIDE APPLICATIONS:2.0mm.
BELLY TO BELLY APPLICAITON:3.0MM
- 6.PADS AND VIAS CHASSIS GROUND;
- 7:REFERENCE APPLICATION SPEC 114-32146. FOR
RECOMMENDED DRILL HOLE DIAMETER AND PLATING THICKNESS.
- 8:DATE CODE MARKED AT APPROXIMATE AREA



THIS PRINT IS
PRELIMINARY
UNQUALIFIED PRODUCT
CONTACT PRODUCT ENGINEERING
BEFORE USING THIS PRINT

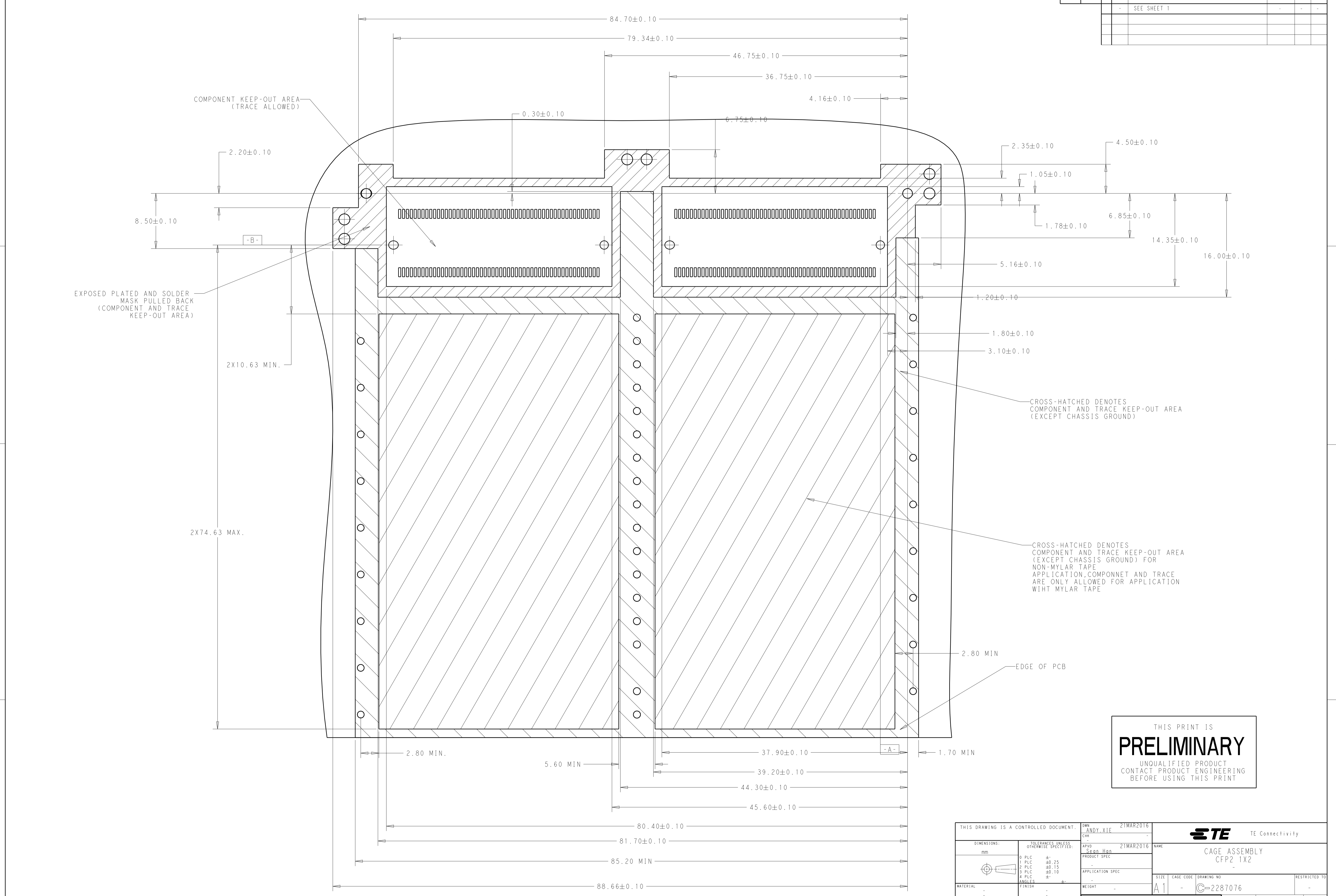
SCALE 2:1



WITH	2287076-4
WITHOUT	2287076-2
MYLAR TAPE	PART NUMBER

THIS DRAWING IS A CONTROLLED DOCUMENT.		OWN: ANDY XIE 21MAR2016	PRELIMINARY
DIMENSIONS: mm		CHK: SEAN HAN 21MAR2016	
TOLERANCES UNLESS OTHERWISE SPECIFIED:		APPR: SEAN HAN 21MAR2016	NAME: CAGE ASSEMBLY
0 PLC ±		PRODUCT SPEC: 108-32103	
1 PLC ±0.25		APPLICATION SPEC: 114-32146	SIZE: A1
2 PLC ±0.15		WEIGHT: -	
3 PLC ±0.10		FINISH: -	SCALE: 1:1
4 PLC ±		CUSTOMER DRAWING	
ANGLES ±		RESTRICTED TO	SHEET 1 OF 4
MATERIAL: -		DATE CODE: -	REV 5

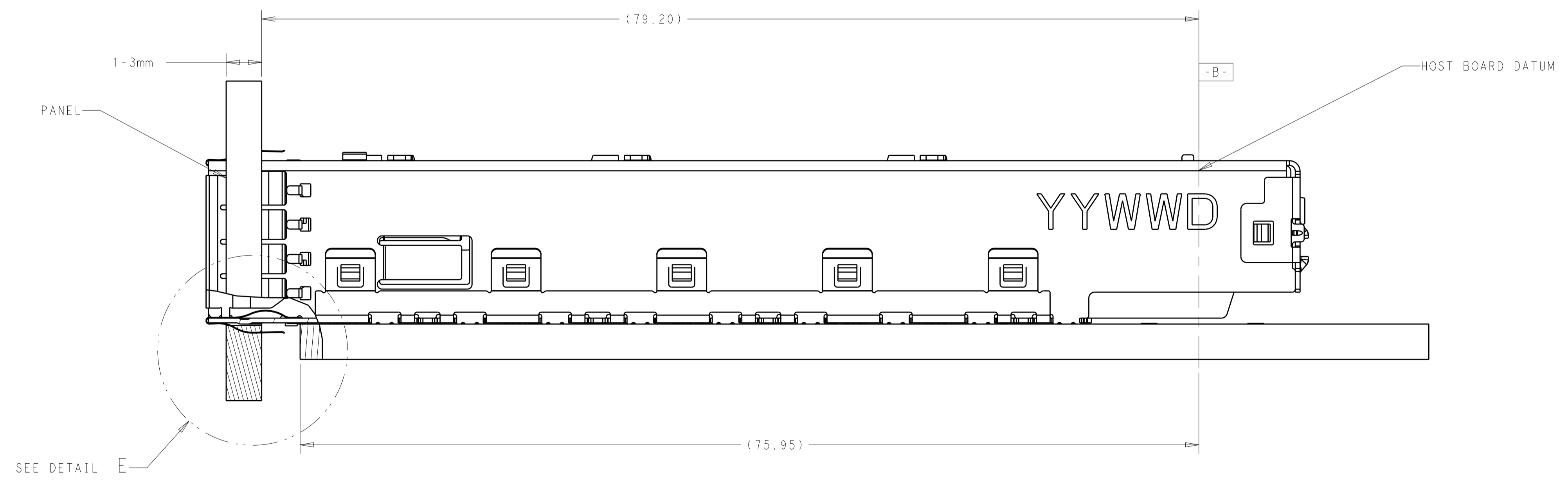
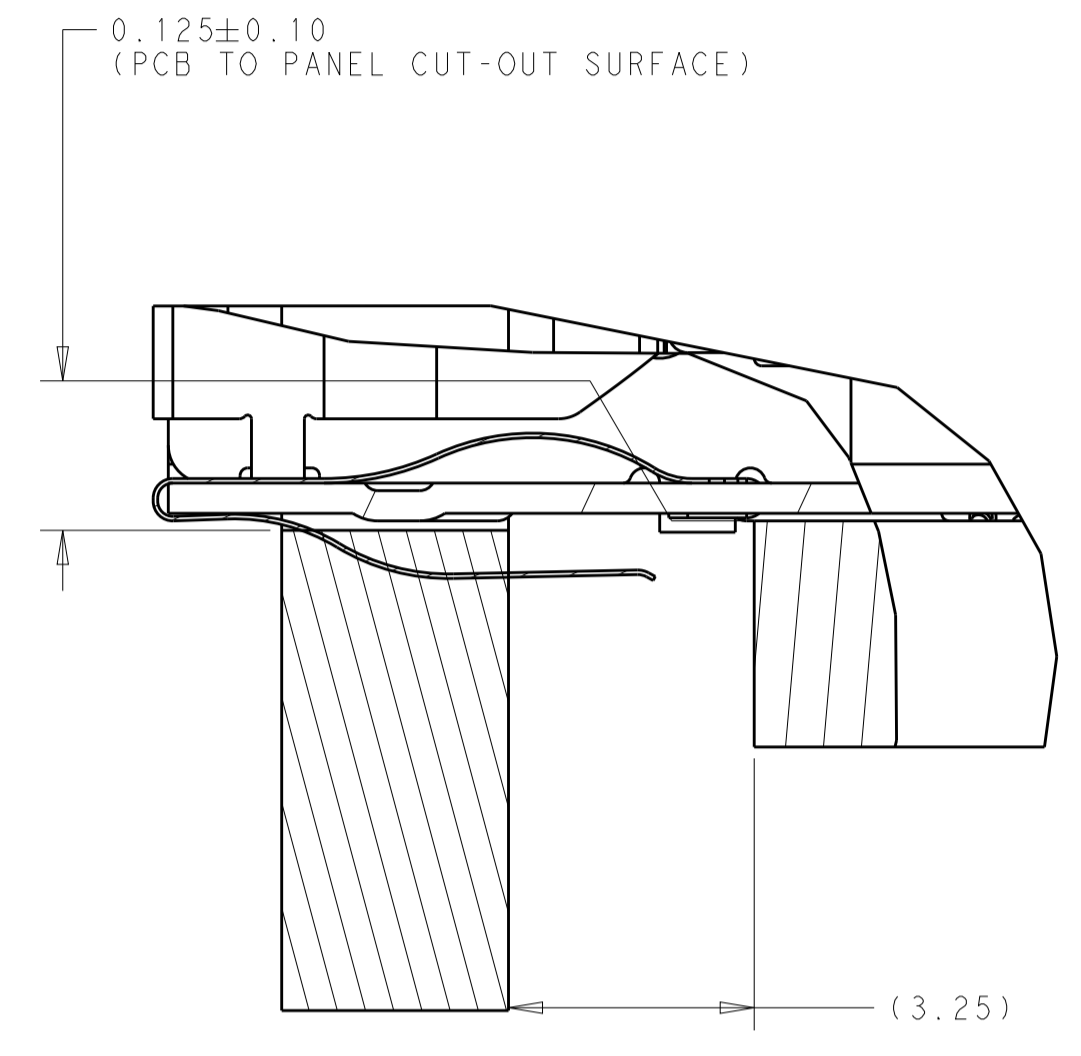
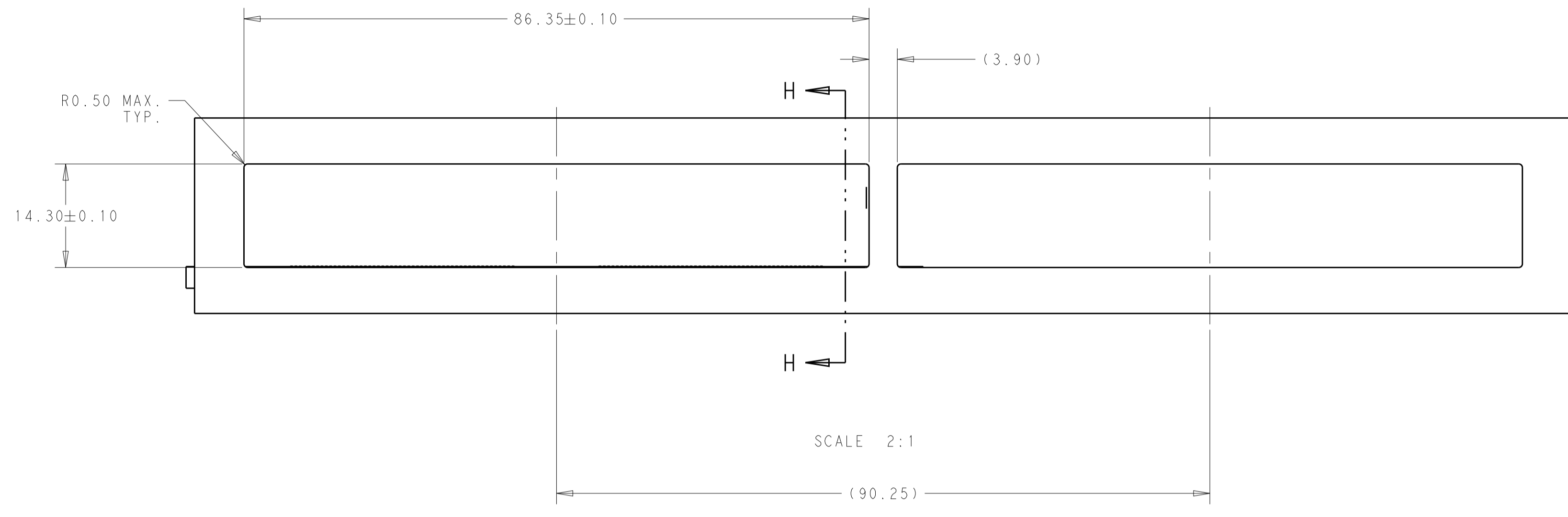
LOC		DIST		REVISIONS			
GP	00	P	LYN	DESCRIPTION	DATE	OWN	APVD
-	-	-	-	SEE SHEET 1	-	-	-



THIS PRINT IS
PRELIMINARY
 UNQUALIFIED PRODUCT
 CONTACT PRODUCT ENGINEERING
 BEFORE USING THIS PRINT

THIS DRAWING IS A CONTROLLED DOCUMENT.		OWN	ANDY.XIE	Z1MAR2016	NAME		CAGE ASSEMBLY	
DIMENSIONS:		CHK	-	-	PRODUCT SPEC		CFP2 1X2	
mm		APVD	Sean Han	Z1MAR2016	APPLICATION SPEC		SIZE	
0 PLC ±		MATERIAL		FINISH	WEIGHT		SCALE	
1 PLC ±0.25		Customer Drawing		-	A1		1:1	
2 PLC ±0.15		Customer Drawing		-	C=2287076		SHEET 3 OF 4	
3 PLC ±0.10		Customer Drawing		-	Customer Drawing		REV 5	
4 PLC ±		Customer Drawing		-	Customer Drawing		REV 5	
ANGLES		Customer Drawing		-	Customer Drawing		REV 5	

LOC		DIST		REVISIONS			
GP	00	P	LTN	DESCRIPTION	DATE	DMN	APVD
-	-	-	-	SEE SHEET 1	-	-	-



THIS PRINT IS
PRELIMINARY
 UNQUALIFIED PRODUCT
 CONTACT PRODUCT ENGINEERING
 BEFORE USING THIS PRINT

THIS DRAWING IS A CONTROLLED DOCUMENT.		DMN ANDY.XIE	ZIMAR2016	TE Connectivity	
DIMENSIONS:		CHK -	-		
mm	TOLERANCES UNLESS OTHERWISE SPECIFIED:	APVD Sean Han	ZIMAR2016	NAME CAGE ASSEMBLY CFP2 1X2	
	0 PLC ± 1 PLC ±0.25 2 PLC ±0.15 3 PLC ±0.10 4 PLC ± ANGLES ±	PRODUCT SPEC	APPLICATION SPEC	SIZE A1	CAGE CODE C=2287076
MATERIAL	FINISH	WEIGHT	Customer Drawing	SCALE 1:1	SHEET 4 OF 4
				REV 5	