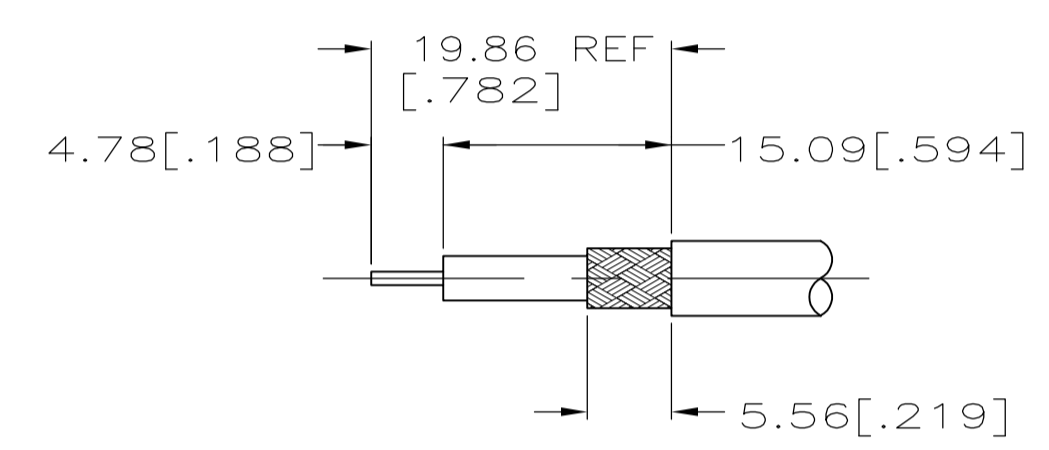
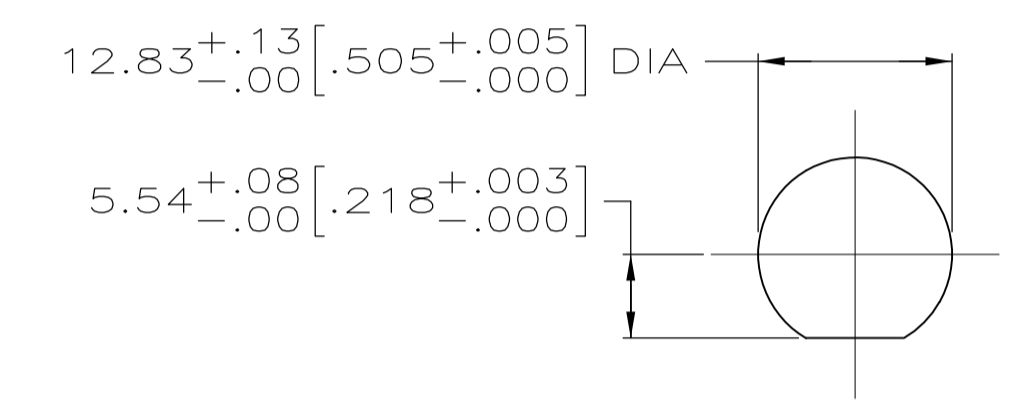


1. MAX PANEL THICKNESS: 6.10 [.240]  
 2. SEE I.S. 1914-3



RECOMMENDED STRIP LENGTH



SUGGESTED PANEL CUTOUT

	220009-1	RG-174/U & 188/U	TYCO 6-331693-2	-	21427-4	9-329631-0	9-329632-0	329633	1883188-1	1-331368-2	1883623-1	6-331693-2	
OBSOLETE	69477-2	TWISTED PAIR (SPECIAL)	-	-	21427-4	1-329631-2	1-329632-2	329633	2-329461-7	3-331368-9	227461-1	3-331693-0	
OBSOLETE	69477-1	RG-174/U	AMP & 2-331693-9	-	-	329631	329632	329633	50428-1	1-331368-2	1-331786-0	2-331693-9	
OBSOLETE	69477-2	IBM 5353914 & BRAND REX T209	-	226171-2	-	1-329631-2	1-329632-2	329633	2-329049-4	2-331368-2	227461-1	2-331693-8	
OBSOLETE	69477-2	RAYCHEM 7524A1312	AMP & 2-331693-7	-	-	329631	329632	329633	329461	2-331368-3	1-331786-1	2-331693-7	
OBSOLETE	69477-2	TWISTED PAIR (SPECIAL)	AMP & 2-331693-6	-	21427-4	329631	329632	329633	329461	2-331368-3	1-331786-1	2-331693-6	
OBSOLETE	69477-2	IBM 5353914 & BRAND REX T209A	-	226171-2	-	329631	329632	329633	2-329049-1	2-331368-2	1-331786-7	2-331693-5	
SUPERSEDED BY 225398-6	69478-1	RG-142/U,142A/U & 142B/U	00779 M39012/19B0006 YY WW	-	-	1-329631-9	329632	329633	329099	2-331369-4	331786	1-331693-8	
SUPERSEDED BY 225398-3	69478-1	RG-55/U,55A/U,55B/U & 223/U	00779 M39012/19B0004 YY WW	-	-	1-329631-9	329632	329633	329099	2-331369-3	331786	1-331693-6	
SUPERSEDED BY 225398-9	69477-2	RG-180/U,180A/U & 195/U	AMP & 1-331693-4	-	-	329631	329632	329633	329461	1-331368-4	1-331786-1	1-331693-4	
SUPERSEDED BY 225398-8	220009-1	RG-179/U & 187/U	AMP & 1-331693-3	-	21427-4	329631	329632	329633	2-328666-3	1-331368-4	1-331786-1	1-331693-3	
	220009-1	RG-174/U & 188/U	AMP & 1-331693-2	-	21427-4	329631	329632	329633	2-328666-3	1-331368-2	1-331786-1	1-331693-2	
	69478-1	RG-58/U,58A/U,58B/U & 58C/U	00779 M39012/19B0003 YY WW	-	-	1-329631-9	329632	329633	9-50427-3	2-331369-3	331786	1-331693-1	
	69477-2	AMPHENOL 21-597	AMP & 1-331693-0	-	-	329631	329632	329633	329461	1-331368-2	1-331786-1	1-331693-0	
OBSOLETE	69477-1	RG-59/U,59A/U,59B/U,62/U,62A/U & 62B/U	00779 M39012/19B0007 YY WW	-	-	1-329631-9	329632	329633	50428-1	3-331368-9	1-331786-0	331693	
		USE CRIMPING TOOL	FOR USE WITH CABLE	STAMPING	⑧ TUBING QTY=1	⑦ BUSHING QTY=1	⑥ JAM NUT QTY=1	⑤ LOCK WASHER QTY=1	④ GASKET QTY=1	③ FERRULE QTY=1	② CONTACT QTY=1	① JACK ASSY QTY=1	ASSY NO

THIS DRAWING IS A CONTROLLED DOCUMENT.

DIMENSIONS: INCHES	TOLERANCES UNLESS OTHERWISE SPECIFIED:	DIN P. ALSEDEK 5-7-90	CHK: R.E. RUTH 9/6/90	APVD: -	NAME: -
0 PLC ± -	1 PLC ± -	2 PLC ± -	3 PLC ± 4[.016]	4 PLC ± -	ANGLES ± -
MATERIAL: -	FINISH: -	WEIGHT: -	SIZE: A1	CAGE CODE: 00779	DRAWING NO: 331693
CUSTOMER DRAWING			SCALE: 2:1	SHEET: 1 OF 1	REV: V

**STE** TE Connectivity  
 JACK, BULKHEAD, DUAL CRIMP, BNC