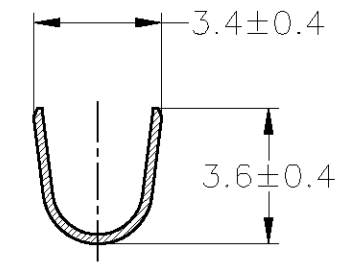
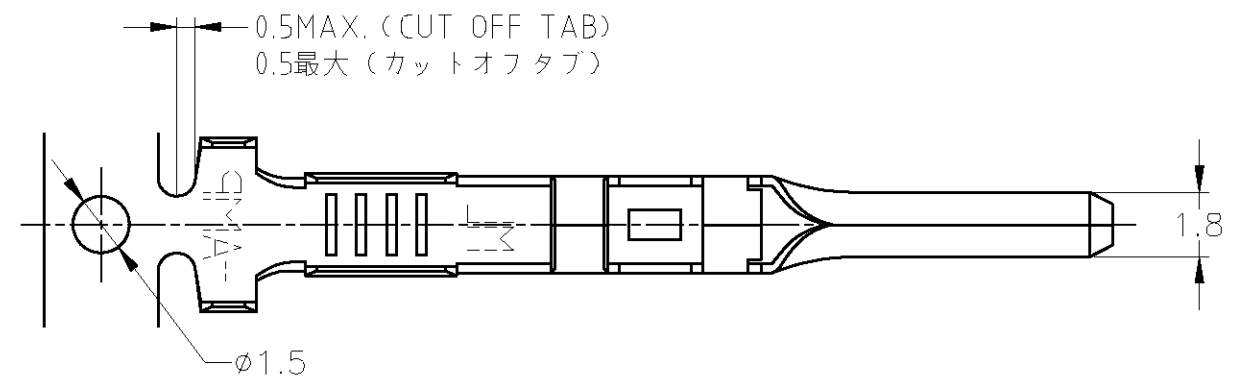


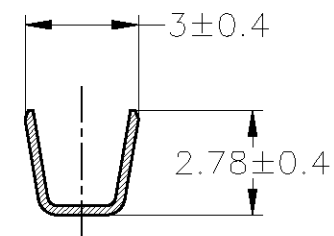
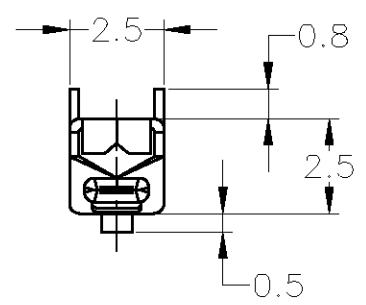
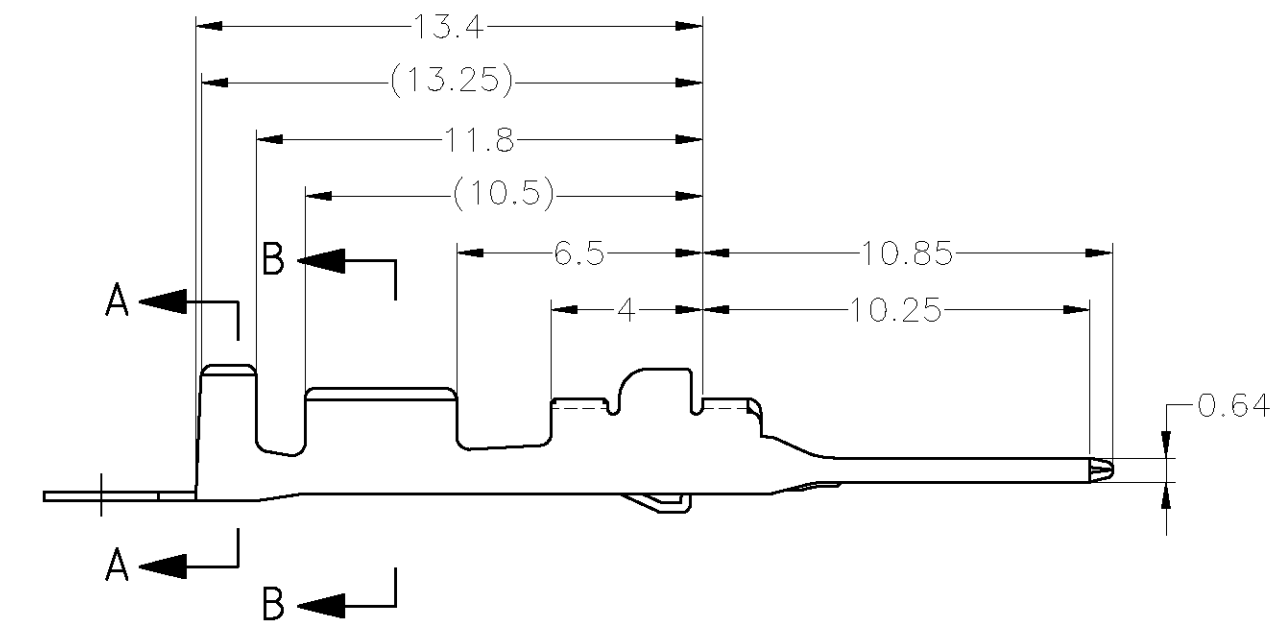
THIS DRAWING IS UNPUBLISHED. RELEASED FOR PUBLICATION  
 © COPYRIGHT - By Tyco Electronics JAPAN G.K. ALL RIGHTS RESERVED.

LOC	DIST	REVISIONS					
		P	LTR	DESCRIPTION	DATE	DWN	APVD
J	-	A1	REDRAWN W/CHANGE	ECR-12-012125	05JUL2012	TS	KB

-1; AS SHOWN



A-A



B-B

1. APPLICATION SPEC NO. 114-5160

1. 取付適用規格番号 114-5160

TOLERANCES UNLESS OTHERWISE SPECIFIED:  
 一般公差

10 ≥	: ±0.2
30 ≥ > 10	: ±0.25
100 ≥ > 30	: ±0.3
ANGLE : ±3°	

THIS DRAWING IS A CONTROLLED DOCUMENT.		DWN T.SHINOHARA 05JUL2012	<b>STE</b> TE Connectivity													
DIMENSIONS: mm		CHK K.BETSUI 05JUL2012														
TOLERANCES UNLESS OTHERWISE SPECIFIED:		APVD K.BETSUI 05JUL2012	NAME													
<table border="1"> <tr><td>0 PLC</td><td>± -</td></tr> <tr><td>1 PLC</td><td>± -</td></tr> <tr><td>2 PLC</td><td>± -</td></tr> <tr><td>3 PLC</td><td>± -</td></tr> <tr><td>4 PLC</td><td>± -</td></tr> <tr><td>ANGLES</td><td>± -</td></tr> </table>		0 PLC	± -	1 PLC	± -	2 PLC	± -	3 PLC	± -	4 PLC	± -	ANGLES	± -	PRODUCT SPEC	070II SERIES S TAB CONTACT	
0 PLC	± -															
1 PLC	± -															
2 PLC	± -															
3 PLC	± -															
4 PLC	± -															
ANGLES	± -															
MATERIAL ZKLF-5		FINISH PRE-TIN	APPLICATION SPEC	RESTRICTED TO												
<table border="1"> <tr><td>10 ≥</td><td>: ±0.2</td></tr> <tr><td>30 ≥ &gt; 10</td><td>: ±0.25</td></tr> <tr><td>100 ≥ &gt; 30</td><td>: ±0.3</td></tr> <tr><td colspan="2">ANGLE : ±3°</td></tr> </table>		10 ≥	: ±0.2	30 ≥ > 10	: ±0.25	100 ≥ > 30	: ±0.3	ANGLE : ±3°		WEIGHT 0.35 g	SEE NOTE	SIZE A3				
10 ≥	: ±0.2															
30 ≥ > 10	: ±0.25															
100 ≥ > 30	: ±0.3															
ANGLE : ±3°																
		CUSTOMER DRAWING	SCALE 5:1	CAGE CODE 00779												
			DRAWING NO C-179239	SHEET 1 OF 1												
				REV A1												