

DRAWING FOR REFERENCE: This is subject to change without notice

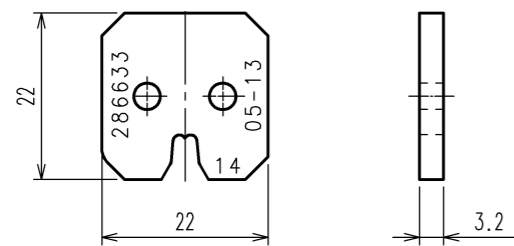
2016/10/24 23:55:54 (JST) Racheille Sheffer

1 2 3 4 5 6 7 8

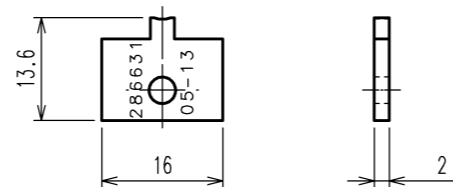
A
B
C
D
E
F

A
B
C
D
E
F

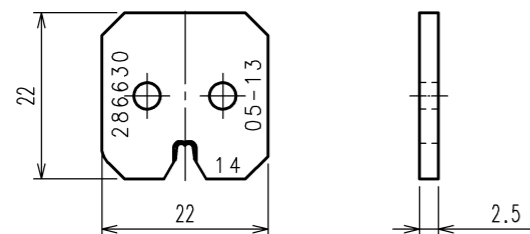
INSULATION CRIMPER



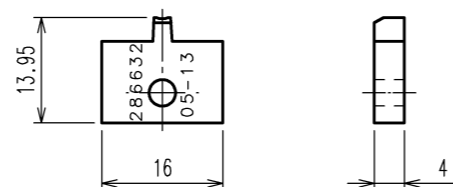
INSULATION ANVIL



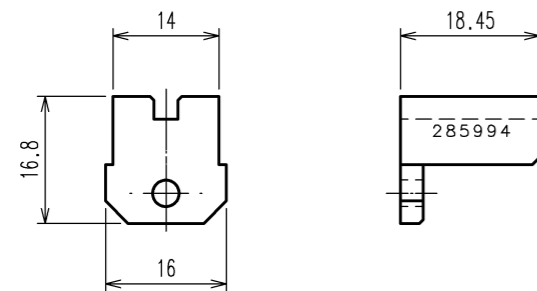
WIRE CRIMPER



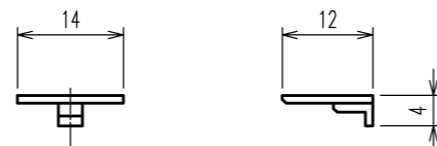
WIRE ANVIL



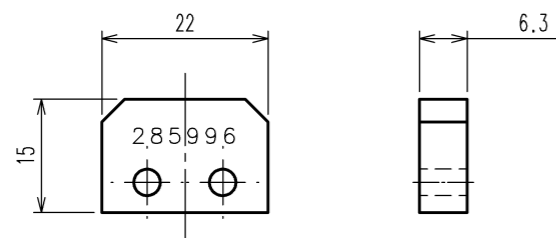
CONTACT HOLDER A



CONTACT HOLDER B



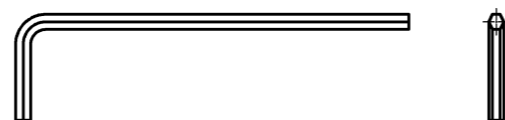
CRIMPER SPACER



SCREW(M2×5) : TWO



HEXAGON WRENCH(M2)



COUNT	DESCRIPTION OF REVISIONS	BY	CHKD	DATE	COUNT	DESCRIPTION OF REVISIONS	BY	CHKD	DATE
△				..	△				..
△				..	△				..
△				..	△				..

Notes 1.This drawing shows PQ50-14(2517) (CL0250-1020-6).

2.The following table shows the specification of this unit.

INSULATION CRIMPER	ONE
WIRE CRIMPER	ONE
INSULATION ANVIL	ONE
WIRE ANVIL	ONE
CONTACT HOLDER A	ONE
CONTACT HOLDER B	ONE
CRIMPER SPACER	ONE
SCREW(M2×5)	TWO
HEXAGON WRENCH(M2)	ONE

2			4		
1			3		
NO.	MATERIAL	FINISH, REMARKS	NO.	MATERIAL	FINISH, REMARKS
CODE NO.(OLD) CL			DRAWN	DESIGNED	CHECKED
			H.KUDO 13.5.17	M.TAKAHASHI 13.5.17	S.OIZUMI 13.5.20
			APPROVED	RELEASED	
			T.IITO 13.5.20
DRAWING NO. EDC3-276375			PART NO. PQ50-14(2517)		
SCALE 1 : 1			CODE NO. CL250-1020-6		
UNITS mm			HRS HIROSE ELECTRIC CO., LTD		
					1/1

1 2 3 4 5 6 7 8

TO
PE