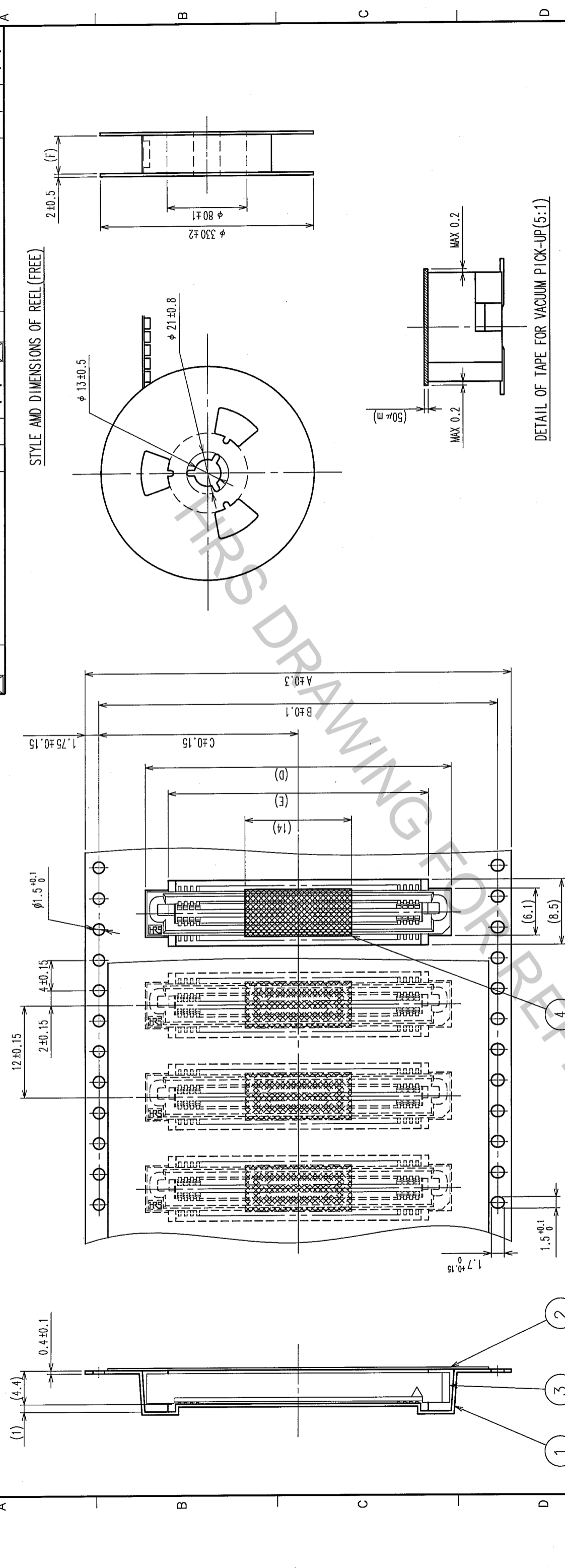




| COUNT | DESCRIPTION OF REVISIONS | BY | CHKD | DATE | COUNT | DESCRIPTION OF REVISIONS | BY | CHKD | DATE |
|-------|--------------------------|----|------|------|-------|--------------------------|----|------|------|
|       |                          |    |      |      |       |                          |    |      |      |
|       |                          |    |      |      |       |                          |    |      |      |



**DIMENSION TABLE OF EMBOSSED CARRIER TAPE AND REEL.**

| PART No.           | CODE No.        | A    | B    | C    | D    | E    | F    |
|--------------------|-----------------|------|------|------|------|------|------|
| FX6A-20S-0.8SV(93) | CL576-0301-7-93 | 24.0 | -    | 11.5 | 16.2 | 10.2 | 24.4 |
| FX6A-40S-0.8SV(93) | CL576-0303-2-93 | 44.0 | 40.4 | 20.2 | 24.2 | 18.2 | 44.4 |
| FX6A-50S-0.8SV(93) | CL576-0304-5-93 | 44.0 | 40.4 | 20.2 | 28.2 | 20.2 | 44.4 |
| FX6A-60S-0.8SV(93) | CL576-0305-8-93 | 44.0 | 40.4 | 20.2 | 32.2 | 26.2 | 44.4 |
| FX6A-80S-0.8SV(93) | CL576-0307-3-93 | 56.0 | 52.4 | 26.2 | 40.2 | 34.2 | 58.0 |

| NO. | MATERIAL    | FINISH, REMARKS       | NO. | MATERIAL  | FINISH, REMARKS         |
|-----|-------------|-----------------------|-----|-----------|-------------------------|
| 2   | POLYESTER   | COVER TAPE            | 4   | POLYIMIDE | TAPE FOR VACUUM PICK-UP |
| 1   | POLYSTYRENE | EMBOSSED CARRIER TAPE | 3   |           | (CONNECTOR)             |

| CODE NO. (OLD) | DESIGNED      | CHECKED   | APPROVED  | RELEASED |
|----------------|---------------|-----------|-----------|----------|
|                | T. YANAGISAWA | K. Ogawa  | H. Okawa  |          |
|                | '05.08.04     | '05.08.05 | '05.08.05 |          |

**NOTE 1** THE DIMENSIONS IN PARENTHESES ARE FOR REFERENCE.  
**NOTE 2** REEL : 1000 CONNECTORS.  
**NOTE 3** NUMBER OF CONTACTS.

**TRAILER** (REEL: 1000 CONNECTORS)

**EQUIPPED** (REEL: 1000 CONNECTORS)

**EMBOSSED CARRIER TAPE**

**COVER TAPE**

**10 EMPTY COMPONENT COMPARTMENT MIN.**

**10 EMPTY COMPONENT COMPARTMENT MIN.**

**DRAWING NO.** EDC3-152949-23  
**PART NO.** FX6A-\*S-O.8SV(93)  
**SCALE** FREE  
**UNITS** mm

**HRS** HIROSE ELECTRIC CO., LTD.

**CODE NO.** CL576

**FORM NO.** 229

|     |  |
|-----|--|
| TO  |  |
| PCK |  |