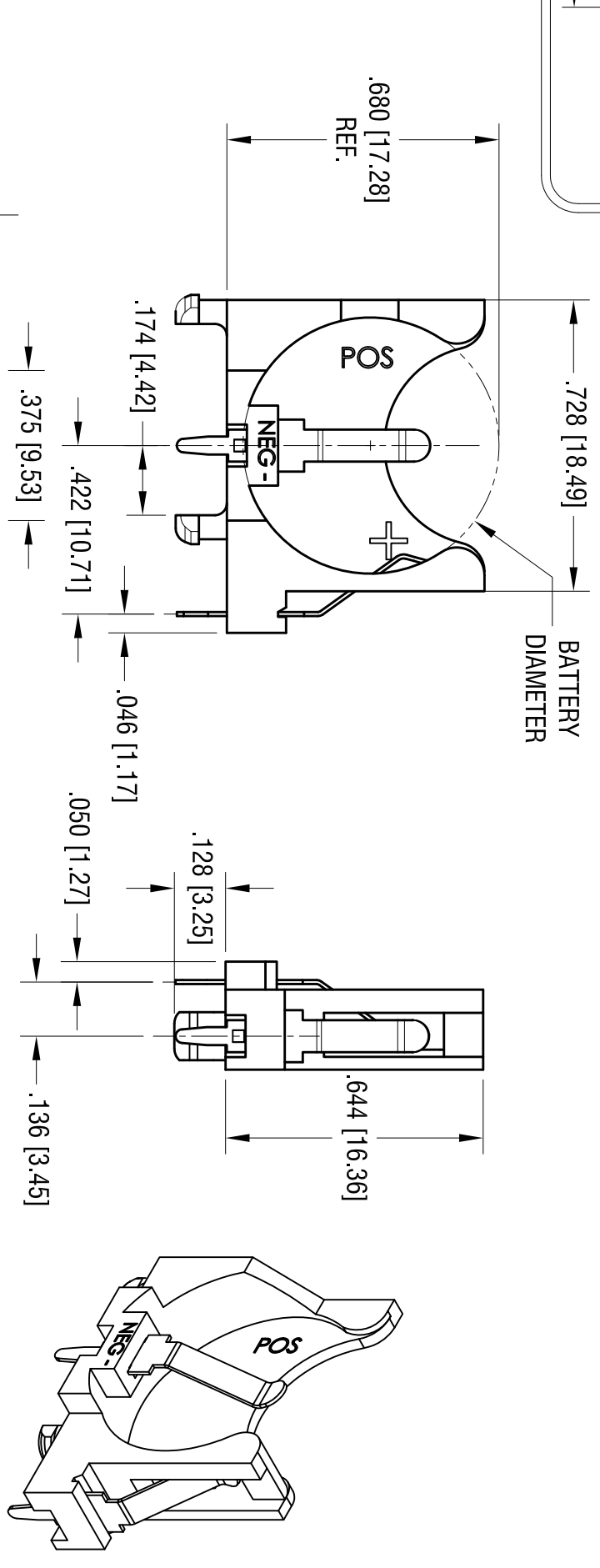
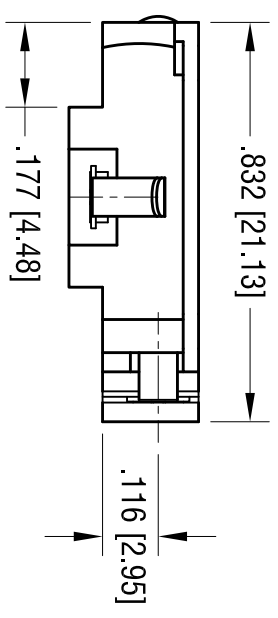
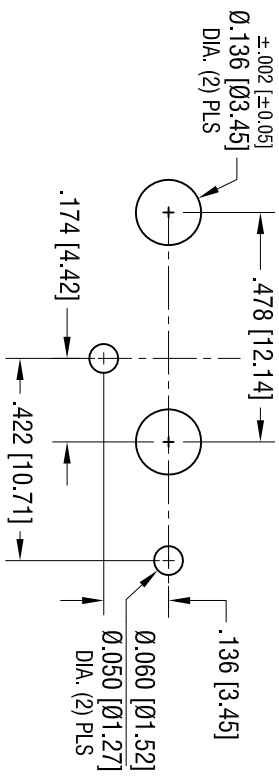


**MOUNTING LAYOUT**

TOLERANCE:  $\pm 0.005$  [ $\pm 0.13$ ] UNLESS OTHERWISE SPECIFIED.



DATE	DESCRIPTION	REV.
1.20.11	CHANGE AS PER ECN 11-004	A
4.14.11	CHANGE AS PER ECN 11-053	B
4.19.12	CHANGE AS PER ECN 12-052	C
4.23.12	CHANGE AS PER ECN 12-055	D

**NOTES:**

1. BASE:  
MATEL - PBT (UL 94V-0) BLACK
- CONTACTS:  
MATEL - .010 [0.25] THK SPRING STEEL  
HEAT TREAT TO SPRING TEMPER.  
FINISH - TIN NICKEL PLATE.

THIS DOCUMENT IS THE PROPERTY OF KEYSTONE ELECTRONICS CORP. AND SHALL NOT BE REPRODUCED, DISTRIBUTED OR USED AS A BASIS FOR MANUFACTURE WITHOUT PRIOR WRITTEN PERMISSION FROM KEYSTONE ELECTRONICS CORP.

**KEYSTONE ELECTRONICS CORP.**  
[www.keystone.com](http://www.keystone.com) • ASTORIA, N.Y. 11105-2017 • Tel (718) 956-8900

PART NAME  
16mm VERTICAL COIN CELL HOLDER

MATERIAL  
AS NOTED

FINISH  
AS NOTED

TOLERANCES	INCH	[MM]	CODE	DWG NO.
DECIMAL	$\pm .010$	[ $\pm 0.25$ ]	C	
ANGULAR	$\pm 1^\circ$			

DRN BY: NT DATE: 1.03.11  
 App'd: LN SCALE: 2.5X

**1069**