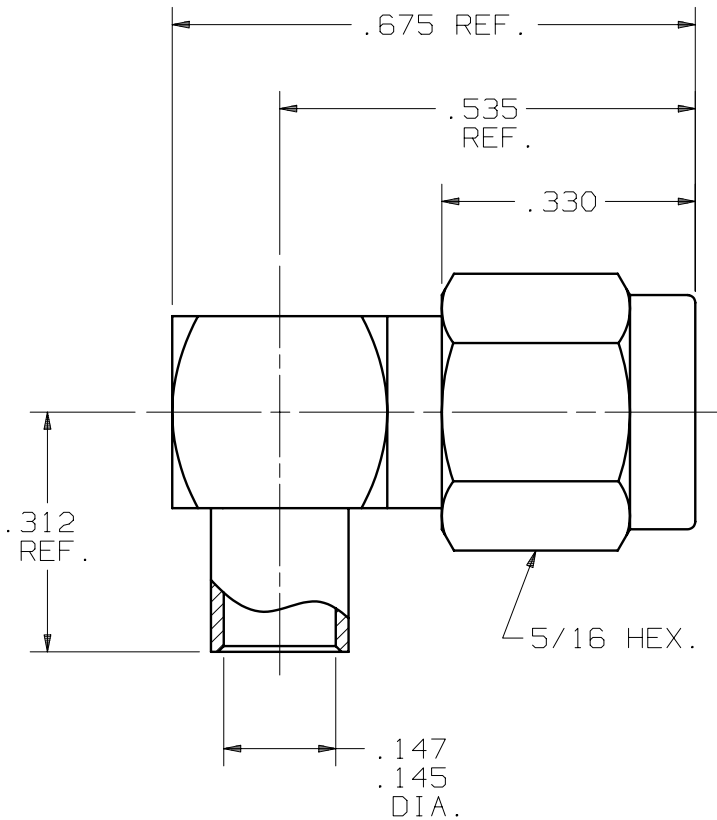


PRODUCT DATA DRAWING

CAD GENERATED DRAWING	DCN CONTROLLED DOCUMENT	DWG. NO. 2912-6001
-----------------------------	-------------------------------	---------------------------



MATERIAL:

BODY, FERRULE,
COUPLING NUT &
CAP: STAINLESS STEEL PER AMS-5640,
UNS S30300, TYPE I.

CONTACT: BRASS PER ASTM B 16, ALLOY
UNS C36000, H02.

LOCK RING: BERYLLIUM COPPER PER ASTM B 196,
ALLOY C17300, COND. TD04.

INSULATOR: TEFLON ASTM D 1710.

GASKET: SILICONE RUBBER PER A-A-59588.

FINISH:

BODY, FERRULE
& CAP: GOLD PER ASTM B 488, TYPE II,
GRADE C, CLASS .76 OVER NICKEL
PER SAE-AMS-QQ-N-290, CLASS 1,
.000100" MIN.

COUPLING NUT: GOLD PER ASTM B 488, TYPE I,
GRADE C, CLASS .51 OVER NICKEL
PER SAE-AMS-QQ-N-290, CLASS 1,
.000020" MIN.

CONTACT: GOLD PER ASTM B 488, TYPE II,
GRADE C, CLASS 1.27 OVER NICKEL
PER SAE-AMS-QQ-N-290, CLASS 1,
.000100" MIN.

IMPEDANCE: 50 OHMS
FREQ. RANGE: DC-12.4 GHz
D.W.V.: 1500 VRMS
INSUL. RES.: 5000 MEGOHMS MIN.

SYM.	DESCRIPTION	DATE	APPR.	UNLESS OTHERWISE SPECIFIED: 1) ALL DIMENSIONS ARE AFTER PLATING. 2) BREAK CORNERS & EDGES .005 R. MAX. 3) CHAM. 1st & LAST THDS. 4) SURFACE ROUGHNESS 63 / MIL-STD-10. 5) DIAS. ON COMMON CENTERS TO BE CONCENTRIC WITHIN .005 T.I.R. 6) REMOVE ALL BURRS.	DIMENSIONS ARE IN INCHES TOLERANCES: DECIMALS FRACTIONAL ANGULAR .X ±.030 .XX ±.015 ±1/64 X° ±1°0' .XXX ±.005 X°X' ±15'			TITLE: SMA, PLUG, RIGHT ANGLE SOLDER ON FOR .141 SEMI-RIGID
B	REV. DCN F10201	10/85	ND		MATERIAL: SEE ABOVE			
C	REV. DCN 23364	04/97	JM		FINISH: SEE ABOVE	AREA: N/A		
D	REV. DCN 31477	05/04	STW		REDRAWN: BRT 4/04/97			DWG. NO. 2912-6001
					CHECKED: CT 10/15/85	SIZE A	CAGE NO. 95077	SCALE 5X
					APPROVED: ND 10/16/85			

SV Microwave, Inc.

2400 Centrepark West Drive, Suite 100
West Palm Beach, FL 33409

TITLE:
SMA, PLUG, RIGHT ANGLE
SOLDER ON FOR
.141 SEMI-RIGID

DWG. NO.
2912-6001