

6

5

4

3

2

1

E

E

D

D

C

C

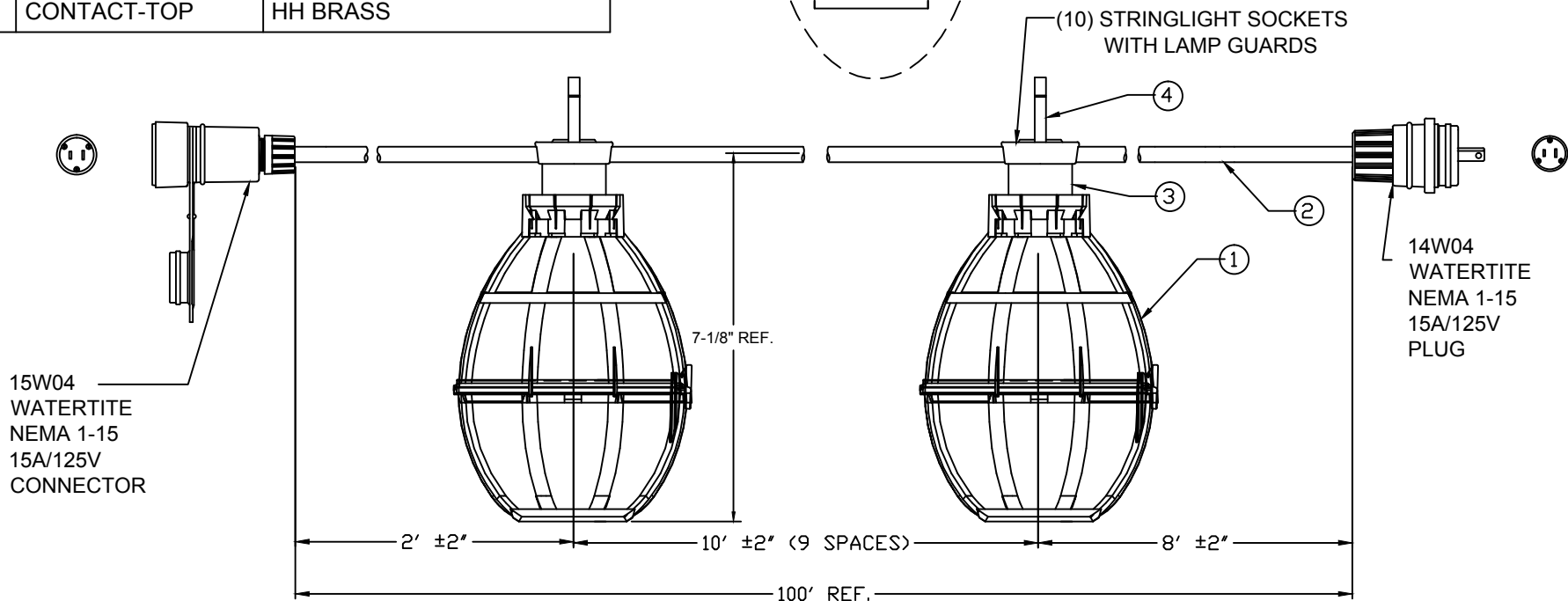
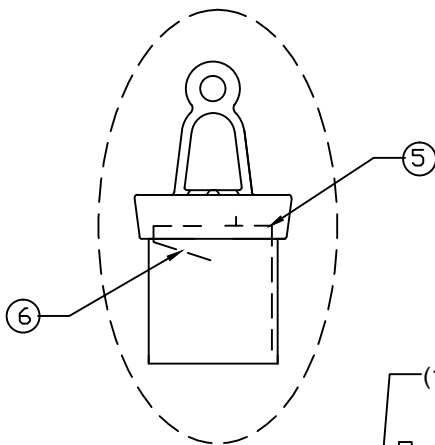
B

B

A

A

ITEM	DESCRIPTION	MATERIAL
1	LAMP GUARD	POLYPROPYLENE-YELLOW
2	CORD	BLACK PVC JACKET, 12-2 CONDUCTORS
3	LAMPHOLDER	BLACK NYLON
4	CAP	BLACK NYLON
5	CONTACT-SIDE	HH BRASS
6	CONTACT-TOP	HH BRASS



CSA LISTED

ORDER NO. 1301110047	WOODHEAD NO. 302SRLCA-F
-------------------------	----------------------------

CHANGE DOCUMENT TYPE	9/9/15
EC NO: IFC2016-0391	9/9/15
DRWN: KCOX01	9/9/15
CHKD: HRUIZ	
APPR: BWOODMAN	2015/07/31
DESCRIPTION	
REV	

QUALITY SYMBOLS	▽=0
	▽C=0

GENERAL TOLERANCES (UNLESS SPECIFIED)	
	mm INCH
4 PLACES	±--- ±---
3 PLACES	±--- ±---
2 PLACES	±0.05 ±0.010
1 PLACE	±0.10 ±0.020
ANGULAR ±.5°	
DRAFT WHERE APPLICABLE MUST REMAIN WITHIN DIMENSIONS	

DIMENSION STYLE INCH ONLY	
DRAWN BY	DATE
PSNAGEL	2015/07/09
CHECKED BY	DATE
HKNEELAN	2015/07/19
APPROVED BY	DATE
BWOODMAN	2015/07/31
MATERIAL NO.	1301110047
SIZE	A

SCALE NTS	DESIGN UNITS INCH	THIRD ANGLE PROJECTION
TITLE		
SALES DRAWING, 302 STRINGLIGHT 100' 10SKTS, WTT FEED THRU		
MOLEX INCORPORATED		
DOCUMENT NO.	SD-130111-007	SHEET NO. 1 OF 1
THIS DRAWING CONTAINS INFORMATION THAT IS PROPRIETARY TO MOLEX INCORPORATED AND SHOULD NOT BE USED WITHOUT WRITTEN PERMISSION		

6

5

4

3

2

1