

PRIMARY CARTON
96707-0003

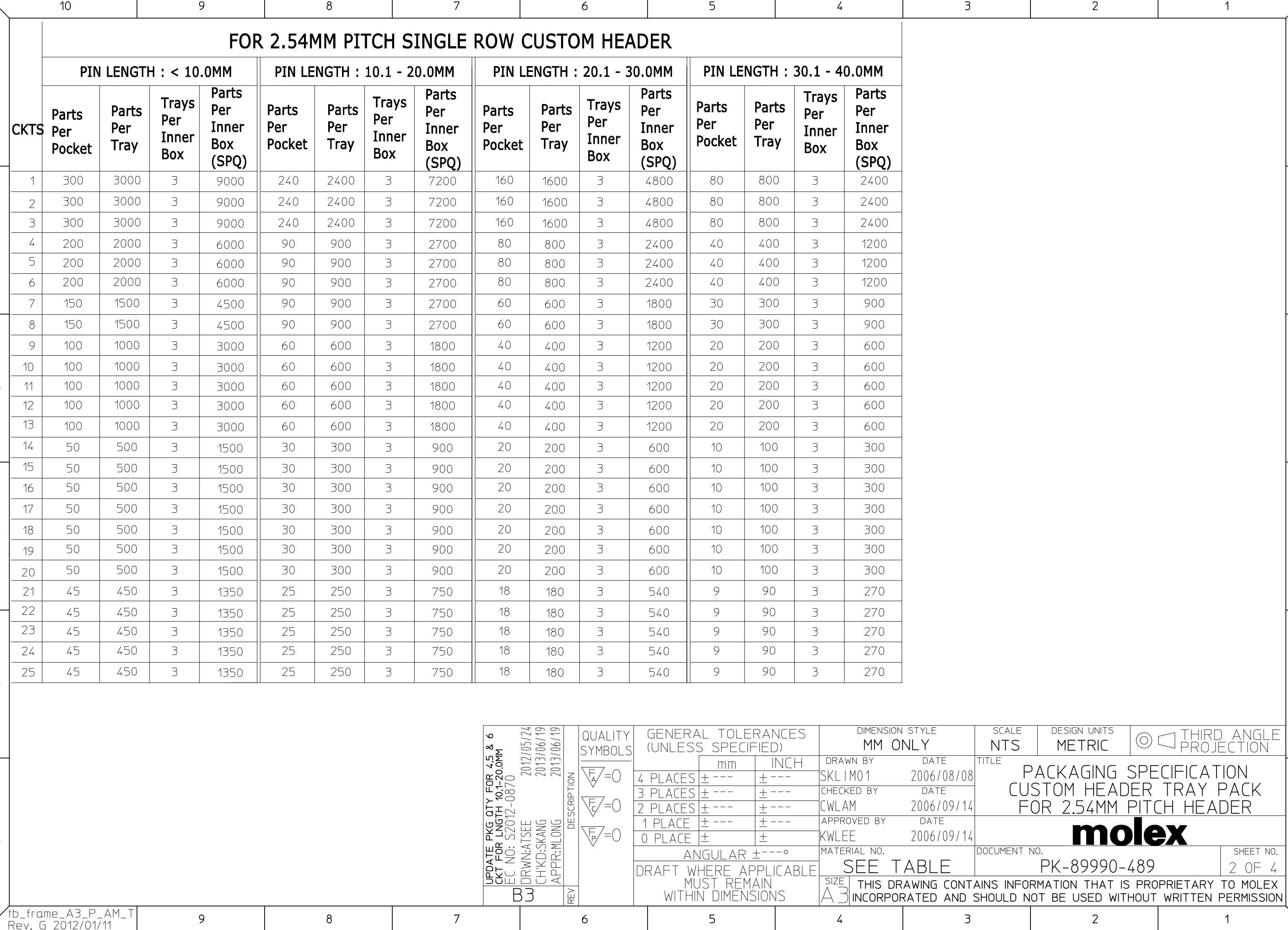
- NOTES:
1. RECOMMENDED LOADED ASSEMBLY PART:
2.54MM PITCH CUSTOM HEADER
 2. STAPLES MAY BE USED TO SET UP STANDARD
CARTON ONLY. ALL CLOSURES MUST BE TAPED

UPDATE PKG QTY FOR 4.5 & 6 CKT FOR LENGTH 10.1-20.0MM EC NO: S2012-0870 DRWN:ATSEE 2012/05/24 CHKD:SKANG 2013/06/19 APPR:MLONG 2013/06/19	QUALITY SYMBOLS $F_A=0$ $F_C=0$ $F_P=0$	GENERAL TOLERANCES (UNLESS SPECIFIED)		DIMENSION STYLE MM ONLY		SCALE NTS	DESIGN UNITS METRIC	THIRD ANGLE PROJECTION		
			mm	INCH	DRAWN BY SKLIM01	DATE 2006/08/08	TITLE PACKAGING SPECIFICATION CUSTOM HEADER TRAY PACK FOR 2.54MM PITCH HEADER			
		4 PLACES	± ---	± ---	CHECKED BY CWLAM	DATE 2006/09/14				
		3 PLACES	± ---	± ---	APPROVED BY KWLEE	DATE 2006/09/14	molex DOCUMENT NO. PK-89990-489 SHEET NO. 1 OF 4			
2 PLACES	± ---	± ---	MATERIAL NO. SEE TABLE							
1 PLACE	± ---	± ---	ANGULAR ± ---°		THIS DRAWING CONTAINS INFORMATION THAT IS PROPRIETARY TO MOLEX INCORPORATED AND SHOULD NOT BE USED WITHOUT WRITTEN PERMISSION					
0 PLACE	±	±	DRAFT WHERE APPLICABLE MUST REMAIN WITHIN DIMENSIONS							

FOR 2.54MM PITCH SINGLE ROW CUSTOM HEADER

CKTS	PIN LENGTH : < 10.0MM				PIN LENGTH : 10.1 - 20.0MM				PIN LENGTH : 20.1 - 30.0MM				PIN LENGTH : 30.1 - 40.0MM			
	Parts Per Pocket	Parts Per Tray	Trays Per Inner Box	Parts Per Inner Box (SPQ)	Parts Per Pocket	Parts Per Tray	Trays Per Inner Box	Parts Per Inner Box (SPQ)	Parts Per Pocket	Parts Per Tray	Trays Per Inner Box	Parts Per Inner Box (SPQ)	Parts Per Pocket	Parts Per Tray	Trays Per Inner Box	Parts Per Inner Box (SPQ)
1	300	3000	3	9000	240	2400	3	7200	160	1600	3	4800	80	800	3	2400
2	300	3000	3	9000	240	2400	3	7200	160	1600	3	4800	80	800	3	2400
3	300	3000	3	9000	240	2400	3	7200	160	1600	3	4800	80	800	3	2400
4	200	2000	3	6000	90	900	3	2700	80	800	3	2400	40	400	3	1200
5	200	2000	3	6000	90	900	3	2700	80	800	3	2400	40	400	3	1200
6	200	2000	3	6000	90	900	3	2700	80	800	3	2400	40	400	3	1200
7	150	1500	3	4500	90	900	3	2700	60	600	3	1800	30	300	3	900
8	150	1500	3	4500	90	900	3	2700	60	600	3	1800	30	300	3	900
9	100	1000	3	3000	60	600	3	1800	40	400	3	1200	20	200	3	600
10	100	1000	3	3000	60	600	3	1800	40	400	3	1200	20	200	3	600
11	100	1000	3	3000	60	600	3	1800	40	400	3	1200	20	200	3	600
12	100	1000	3	3000	60	600	3	1800	40	400	3	1200	20	200	3	600
13	100	1000	3	3000	60	600	3	1800	40	400	3	1200	20	200	3	600
14	50	500	3	1500	30	300	3	900	20	200	3	600	10	100	3	300
15	50	500	3	1500	30	300	3	900	20	200	3	600	10	100	3	300
16	50	500	3	1500	30	300	3	900	20	200	3	600	10	100	3	300
17	50	500	3	1500	30	300	3	900	20	200	3	600	10	100	3	300
18	50	500	3	1500	30	300	3	900	20	200	3	600	10	100	3	300
19	50	500	3	1500	30	300	3	900	20	200	3	600	10	100	3	300
20	50	500	3	1500	30	300	3	900	20	200	3	600	10	100	3	300
21	45	450	3	1350	25	250	3	750	18	180	3	540	9	90	3	270
22	45	450	3	1350	25	250	3	750	18	180	3	540	9	90	3	270
23	45	450	3	1350	25	250	3	750	18	180	3	540	9	90	3	270
24	45	450	3	1350	25	250	3	750	18	180	3	540	9	90	3	270
25	45	450	3	1350	25	250	3	750	18	180	3	540	9	90	3	270

UPDATE PKG QTY FOR 4.5 & 6 CKT FOR LENGTH 10.1-20.0MM EC NO: S2012-0870 DRWN:ATSEE 2012/05/24 CHKD:SKANG 2013/06/19 APPR:MLONG 2013/06/19	QUALITY SYMBOLS $\nabla_A = 0$ $\nabla_C = 0$ $\nabla_P = 0$	GENERAL TOLERANCES (UNLESS SPECIFIED)		DIMENSION STYLE MM ONLY		SCALE NTS	DESIGN UNITS METRIC	THIRD ANGLE PROJECTION	
		4 PLACES	±	----	±	----	DRAWN BY SKLIM01		DATE 2006/08/08
		3 PLACES	±	----	±	----	CHECKED BY CWLAM	DATE 2006/09/14	
		2 PLACES	±	----	±	----	APPROVED BY KWLEE	DATE 2006/09/14	
		1 PLACE	±	----	±	----	MATERIAL NO.	DOCUMENT NO.	
0 PLACE	±		±		SEE TABLE		PK-89990-489	SHEET NO. 2 OF 4	
ANGULAR ±----° DRAFT WHERE APPLICABLE MUST REMAIN WITHIN DIMENSIONS				THIS DRAWING CONTAINS INFORMATION THAT IS PROPRIETARY TO MOLEX INCORPORATED AND SHOULD NOT BE USED WITHOUT WRITTEN PERMISSION					



FOR 2.54MM PITCH DUAL ROW CUSTOM HEADER

F

F

E

E

D

D

C

C

B

B

A

A

CKTS	PIN LENGTH : 9.0 - 12.0MM				PIN LENGTH : 12.1 - 20.0MM				PIN LENGTH : 20.1 - 28.0MM				PIN LENGTH : 28.1 - 40.0MM			
	Parts Per Pocket	Parts Per Tray	Trays Per Inner Box	Parts Per Inner Box (SPQ)	Parts Per Pocket	Parts Per Tray	Trays Per Inner Box	Parts Per Inner Box (SPQ)	Parts Per Pocket	Parts Per Tray	Trays Per Inner Box	Parts Per Inner Box (SPQ)	Parts Per Pocket	Parts Per Tray	Trays Per Inner Box	Parts Per Inner Box (SPQ)
2	80	800	3	2400	80	800	3	2400	30	300	3	900	15	150	3	450
4	70	700	3	2100	70	700	3	2100	30	300	3	900	15	150	3	450
6	60	600	3	1800	60	600	3	1800	30	300	3	900	15	150	3	450
8	50	500	3	1500	50	500	3	1500	30	300	3	900	15	150	3	450
10	40	400	3	1200	40	400	3	1200	30	300	3	900	15	150	3	450
12	40	400	3	1200	40	400	3	1200	30	300	3	900	15	150	3	450
14	40	400	3	1200	40	400	3	1200	30	300	3	900	15	150	3	450
16	35	350	3	1050	30	300	3	900	30	300	3	900	15	150	3	450
18	30	300	3	900	28	280	3	840	20	200	3	600	10	100	3	300
20	30	300	3	900	28	280	3	840	20	200	3	600	10	100	3	300
22	30	300	3	900	28	280	3	840	20	200	3	600	10	100	3	300
24	28	280	3	840	22	220	3	660	20	200	3	600	10	100	3	300
26	28	280	3	840	22	220	3	660	20	200	3	600	10	100	3	300
28	26	260	3	780	20	200	3	600	15	150	3	450	5	50	3	150
30	26	260	3	780	20	200	3	600	15	150	3	450	5	50	3	150
32	26	260	3	780	20	200	3	600	15	150	3	450	5	50	3	150
34	24	240	3	720	18	180	3	540	15	150	3	450	5	50	3	150
36	24	240	3	720	18	180	3	540	10	100	3	300	5	50	3	150
38	22	220	3	660	18	180	3	540	10	100	3	300	5	50	3	150
40	22	220	3	660	15	150	3	450	10	100	3	300	5	50	3	150
42	20	200	3	600	15	150	3	450	10	100	3	300	5	50	3	150
44	20	200	3	600	15	150	3	450	10	100	3	300	5	50	3	150
46	18	180	3	540	15	150	3	450	10	100	3	300	5	50	3	150
48	18	180	3	540	15	150	3	450	10	100	3	300	5	50	3	150
50	18	180	3	540	15	150	3	450	10	100	3	300	5	50	3	150

UPDATE PKG QTY FOR 4.5 & 6 CKT FOR LENGTH 10.1-20.0MM
 EC NO: S2012-0870
 DRWN:ATSEE 2012/05/24
 CHKD:SKANG 2013/06/19
 APPR:MLONG 2013/06/19

QUALITY SYMBOLS	DESCRIPTION
$F_A=0$	
$F_C=0$	
$F_P=0$	

GENERAL TOLERANCES (UNLESS SPECIFIED)		
	mm	INCH
4 PLACES	± ---	± ---
3 PLACES	± ---	± ---
2 PLACES	± ---	± ---
1 PLACE	± ---	± ---
0 PLACE	±	±
ANGULAR ± ---°		
DRAFT WHERE APPLICABLE MUST REMAIN WITHIN DIMENSIONS		

DIMENSION STYLE	
MM ONLY	
DRAWN BY	DATE
SKLIM01	2006/08/08
CHECKED BY	DATE
CWLAM	2006/09/14
APPROVED BY	DATE
KWLEE	2006/09/14
MATERIAL NO.	
SEE TABLE	
SIZE	
A3	

SCALE	DESIGN UNITS	THIRD ANGLE PROJECTION
NTS	METRIC	
TITLE		
PACKAGING SPECIFICATION CUSTOM HEADER TRAY PACK FOR 2.54MM PITCH HEADER		
molex		
DOCUMENT NO.		SHEET NO.
PK-89990-489		3 OF 4
THIS DRAWING CONTAINS INFORMATION THAT IS PROPRIETARY TO MOLEX INCORPORATED AND SHOULD NOT BE USED WITHOUT WRITTEN PERMISSION		

FOR 2.54MM PITCH TRIPLE ROW CUSTOM HEADER

CKTS

PIN LENGTH : 9.0 - 12.0MM

Parts Per Pocket Parts Per Tray Trays Per Inner Box Parts Per Inner Box (SPQ)

PIN LENGTH : 12.1 - 20.0MM

Parts Per Pocket Parts Per Tray Trays Per Inner Box Parts Per Inner Box (SPQ)

PIN LENGTH : 20.1 - 28.0MM

Parts Per Pocket Parts Per Tray Trays Per Inner Box Parts Per Inner Box (SPQ)

PIN LENGTH : 28.1 - 40.0MM

Parts Per Pocket Parts Per Tray Trays Per Inner Box Parts Per Inner Box (SPQ)

42	-	-	-	-	-	-	-	-	-	-	-	-	9	90	3	270
----	---	---	---	---	---	---	---	---	---	---	---	---	---	----	---	-----

UPDATE PKG QTY FOR 4.5 & 6 CKT FOR LENGTH 10.1-20.0MM EC NO: S2012-0870 DRWN:ATSEE 2012/05/24 CH'KD:SKANG 2013/06/19 APPR:MLONG 2013/06/19	QUALITY SYMBOLS 	GENERAL TOLERANCES (UNLESS SPECIFIED)		DIMENSION STYLE MM ONLY		SCALE NTS	DESIGN UNITS METRIC	THIRD ANGLE PROJECTION		
			mm	INCH	DRAWN BY	DATE	TITLE			
		4 PLACES	±----	±----	SKLIM01	2006/08/08	PACKAGING SPECIFICATION CUSTOM HEADER TRAY PACK FOR 2.54MM PITCH HEADER			
		3 PLACES	±----	±----	CHECKED BY	DATE				
		2 PLACES	±----	±----	CWLAM	2006/09/14				
1 PLACE	±----	±----	APPROVED BY	DATE	DOCUMENT NO.		SHEET NO.			
0 PLACE	±	±	KWLEE	2006/09/14	PK-89990-489		4 OF 4			
ANGULAR ±----°			MATERIAL NO.		THIS DRAWING CONTAINS INFORMATION THAT IS PROPRIETARY TO MOLEX INCORPORATED AND SHOULD NOT BE USED WITHOUT WRITTEN PERMISSION					
DRAFT WHERE APPLICABLE MUST REMAIN WITHIN DIMENSIONS			SEE TABLE							