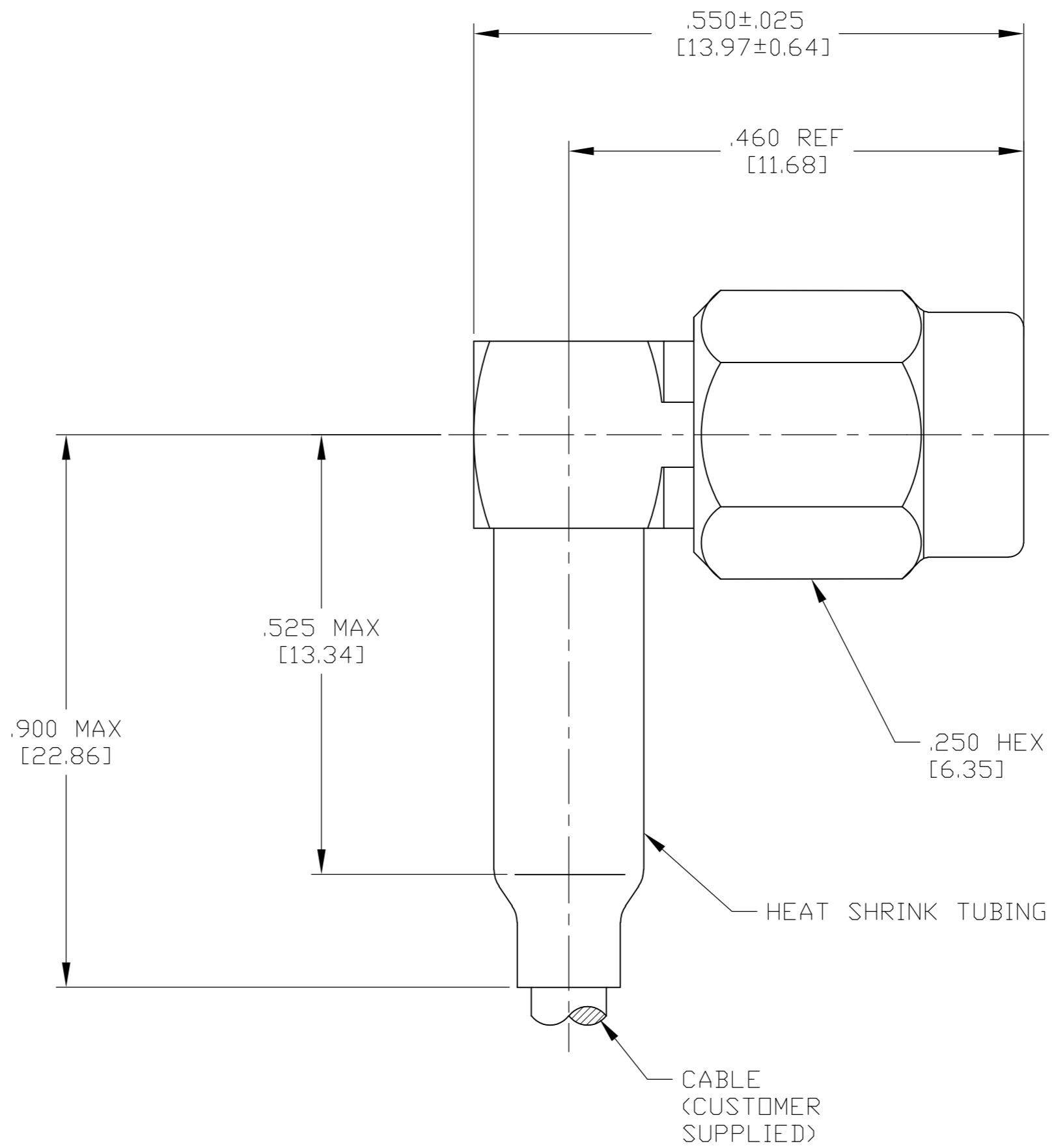


THIS DRAWING IS UNPUBLISHED. RELEASED FOR PUBLICATION
 © COPYRIGHT BY TYCO ELECTRONICS CORPORATION. ALL RIGHTS RESERVED.

LOC		DIST		REVISIONS			
P	LTR	DESCRIPTION	DATE	DWN	APVD		
	A	RELEASED PER ECO 08-002244	1-28-08	CT	DW		

ELECTRICAL	MECHANICAL	ENVIRONMENTAL
Nominal Impedance (Ohms) 50	Interface Dimensions MIL-STD-348, Fig. 3191	TEMPERATURE RATING -65°C TO +165°C
Frequency Range (GHz) DC to 35.0	Recommended Mating	Vibration MIL-STD-202, Method 204, Condition D
Volt Rating (VRMS MAX) @ Sea Level 250	Torque (In/Lbs) 5 MAX	Shock MIL-STD-202, Method 213, Condition I
VSWR 1.10 +.015(f)GHz	Mating Characteristics:	Thermal Shock MIL-STD-202, Method 107, Condition B, EXCEPT HIGH TEMP 115°C
Insertion Loss (dB MAX) .04√f(GHz)	Insertion (MAX Lbs) 3.0	Moisture Resistance MIL-STD-202, Method 106, Except Vibration Shall Be Omitted
RF Leakage (dB MIN) -60 @ 2-3 GHz	Withdrawal (MIN Oz) 1.0	Corrosion - MIL-STD-202, Method 101, Condition B, 5% salt spray
Corona, 70,000 Ft (VRMS MIN) 190	Force to Engage and Disengage (In/Lbs MAX) 2.0	
Dielectric Withstanding Voltage (VRMS MIN) @ Sea Level 750	Center Contact Captivation	
Contact Resistance (Milliohms MAX)	Axial (Lbs) 6.0	
Center Contact 2.0	Radial (In/Oz) 4.0	
Outer Contact 2.0	Cable Retention	
Cable to Housing 0.5	Axial Force (Lbs) 20	
RF High Potential @ Sea Level (VRMS MIN @ 5 MHz) 500	Weight (Grams) 2.3	
I.R.(Megohms MIN) 5000		

- DESIGNED FOR USE WITH RG174/U, RG188/U AND RG316/U
- CAPTURED CENTER CONTACT



COMPONENT	MATERIAL	FINISH
HOUSING CAP COUPLING NUT	STAINLESS STEEL PER ASTM-A484 AND ASTM-A582, TYPE 303	PASSIVATE PER ASTM-A-380
DIELECTRIC	TFE FLUOROCARBON PER ASTM-D-1457	N/A
CENTER CONTACT	BERYLLIUM COPPER PER QQ-C-530,ASTM B196, B197	GOLD PLATE PER ASTM-B-488
RETAINING RING	BERYLLIUM COPPER PER QQ-C-530,ASTM B196, B197	N/A
GASKET	SILICONE RUBBER PER ZZ-R-765	N/A
FERRULE	SOFT COPPER ALLOY	GOLD PLATE PER ASTM-B-488
SHINK TUBING	HEAT SHRINKABLE POLYOLEFIN COMPOUND MIL-I-23053/4	N/A

CABLE ENTRY DIAMETER MINIMUM	
HOUSING	.065 [1.65]
CONTACT	.023 [0.58]
FERRULE	.128 [3.25]

THIS DRAWING IS A CONTROLLED DOCUMENT.

DIMENSIONS: INCHES [mm]	TOLERANCES UNLESS OTHERWISE SPECIFIED:	DWN C.C.THOMAS 1-28-08	Tyco Electronics Corporation Harrisburg, PA 17105-3608
	0 PLC ± -	CHK D.WILSON 1-28-08	
	1 PLC ± -	APVD D.WILSON 1-28-08	
	2 PLC ± -	NAME SSMA RIGHT ANGLE CABLE PLUG - CRIMP ATTACHMENT	
	3 PLC ± .005 [0.13]	PRODUCT SPEC	
4 PLC ± -	APPLICATION SPEC	SIZE A2	CAGE CODE 00779
ANGLES ± -	FINISH SEE TABLE	WEIGHT -	DRAWING NO. 1757803
MATERIAL SEE TABLE		CUSTOMER DRAWING	RESTRICTED TO -
		SCALE 8:1	SHEET 1 of 1

1757803-1
PART NUMBER