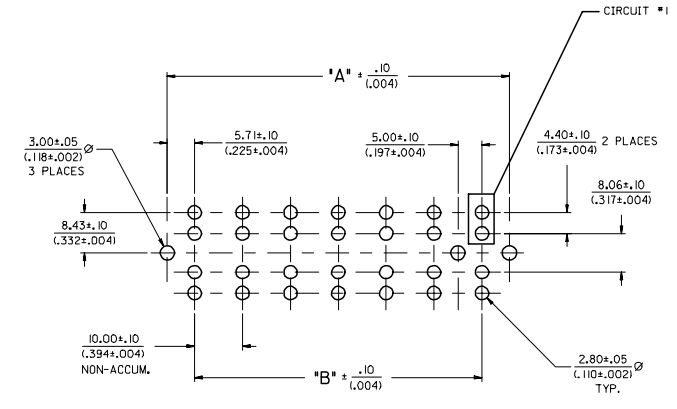
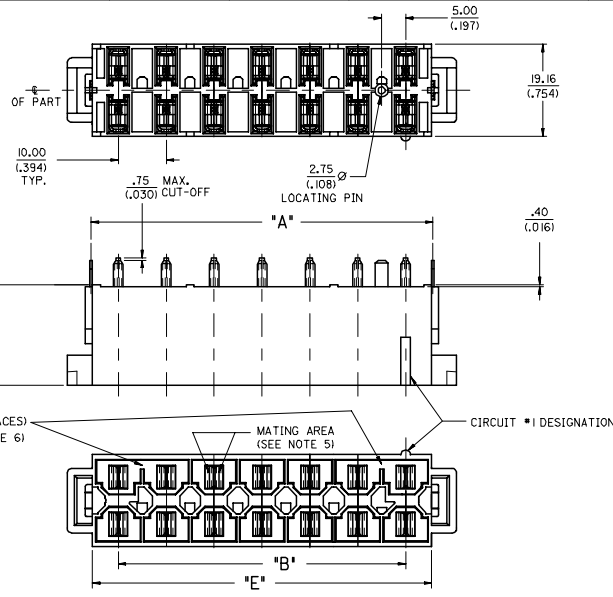


MATERIAL NUMBER	CIRCUITS	DIM. "A"	DIM. "B"	DIM. "C"	DIM. "D"	DIM. "E"	PCB THICKNESS	QUANTITY OF POLARIZING SLOTS	TERMINAL PLATING
43915-1101	6	31.41/(1.237)	20.00/(.787)	3.50/(.137)	L80/(.071)	30.90/(1.217)		1	
43915-1102	8	41.41/(1.630)	30.00/(1.181)	3.50/(.137)	L80/(.071)	40.90/(1.610)		2	
43915-1103	10	51.41/(2.024)	40.00/(1.575)	3.50/(.137)	L80/(.071)	50.90/(2.004)	1.57/(.062)	2	
43915-1104	12	61.41/(2.418)	50.00/(1.969)	3.50/(.137)	L80/(.071)	60.90/(2.398)		2	
43915-1105	14	71.41/(2.811)	60.00/(2.362)	3.50/(.137)	L80/(.071)	70.90/(2.791)		2	
43915-1106	6	31.41/(1.237)	20.00/(.787)	5.10/(.201)	2.60/(.102)	30.90/(1.217)		1	
43915-1107	8	41.41/(1.630)	30.00/(1.181)	5.10/(.201)	2.60/(.102)	40.90/(1.610)		2	
43915-1108	10	51.41/(2.024)	40.00/(1.575)	5.10/(.201)	2.60/(.102)	50.90/(2.004)	2.36/(.093)	2	
43915-1109	12	61.41/(2.418)	50.00/(1.969)	5.10/(.201)	2.60/(.102)	60.90/(2.398)		2	
43915-1110	14	71.41/(2.811)	60.00/(2.362)	5.10/(.201)	2.60/(.102)	70.90/(2.791)		2	
43915-1111	6	31.41/(1.237)	20.00/(.787)	5.10/(.201)	3.40/(.134)	30.90/(1.217)		1	OVERALL TIN
43915-1112	8	41.41/(1.630)	30.00/(1.181)	5.10/(.201)	3.40/(.134)	40.90/(1.610)		2	
43915-1114	10	51.41/(2.024)	40.00/(1.575)	5.10/(.201)	3.40/(.134)	50.90/(2.004)	3.18/(.125)	2	
43915-1114	12	61.41/(2.418)	50.00/(1.969)	5.10/(.201)	3.40/(.134)	60.90/(2.398)		2	
43915-1115	14	71.41/(2.811)	60.00/(2.362)	5.10/(.201)	3.40/(.134)	70.90/(2.791)		2	
43915-1116	6	31.41/(1.237)	20.00/(.787)	8.30/(.327)	6.58/(.259)	30.90/(1.217)		1	
43915-1117	8	41.41/(1.630)	30.00/(1.181)	8.30/(.327)	6.58/(.259)	40.90/(1.610)		2	
43915-1118	10	51.41/(2.024)	40.00/(1.575)	8.30/(.327)	6.58/(.259)	50.90/(2.004)	6.35/(.250)	2	
43915-1119	12	61.41/(2.418)	50.00/(1.969)	8.30/(.327)	6.58/(.259)	60.90/(2.398)		2	
43915-1120	14	71.41/(2.811)	60.00/(2.362)	8.30/(.327)	6.58/(.259)	70.90/(2.791)		2	
43915-1121	10	51.41/(2.024)	40.00/(1.575)	3.50/(.137)	2.60/(.102)	50.90/(2.004)	2.36/(.093)	2	
43915-1905	14	71.41/(2.811)	60.00/(2.362)	3.50/(.137)	L80/(.071)	70.90/(2.791)	1.57/(.062)	2	
43915-1201	6	31.41/(1.237)	20.00/(.787)	3.50/(.137)	L80/(.071)	30.90/(1.217)		1	
43915-1202	8	41.41/(1.630)	30.00/(1.181)	3.50/(.137)	L80/(.071)	40.90/(1.610)		2	
43915-1203	10	51.41/(2.024)	40.00/(1.575)	3.50/(.137)	L80/(.071)	50.90/(2.004)	1.57/(.062)	2	
43915-1204	12	61.41/(2.418)	50.00/(1.969)	3.50/(.137)	L80/(.071)	60.90/(2.398)		2	
43915-1205	14	71.41/(2.811)	60.00/(2.362)	3.50/(.137)	L80/(.071)	70.90/(2.791)		2	
43915-1206	6	31.41/(1.237)	20.00/(.787)	5.10/(.201)	2.60/(.102)	30.90/(1.217)		1	
43915-1207	8	41.41/(1.630)	30.00/(1.181)	5.10/(.201)	2.60/(.102)	40.90/(1.610)		2	
43915-1208	10	51.41/(2.024)	40.00/(1.575)	5.10/(.201)	2.60/(.102)	50.90/(2.004)	2.36/(.093)	2	
43915-1209	12	61.41/(2.418)	50.00/(1.969)	5.10/(.201)	2.60/(.102)	60.90/(2.398)		2	
43915-1210	14	71.41/(2.811)	60.00/(2.362)	5.10/(.201)	2.60/(.102)	70.90/(2.791)		2	
43915-1211	6	31.41/(1.237)	20.00/(.787)	5.10/(.201)	3.40/(.134)	30.90/(1.217)		1	SELECT GOLD
43915-1212	8	41.41/(1.630)	30.00/(1.181)	5.10/(.201)	3.40/(.134)	40.90/(1.610)		2	
43915-1213	10	51.41/(2.024)	40.00/(1.575)	5.10/(.201)	3.40/(.134)	50.90/(2.004)	3.18/(.125)	2	
43915-1214	12	61.41/(2.418)	50.00/(1.969)	5.10/(.201)	3.40/(.134)	60.90/(2.398)		2	
43915-1215	14	71.41/(2.811)	60.00/(2.362)	5.10/(.201)	3.40/(.134)	70.90/(2.791)		2	
43915-1216	6	31.41/(1.237)	20.00/(.787)	8.30/(.327)	6.58/(.259)	30.90/(1.217)		1	
43915-1217	8	41.41/(1.630)	30.00/(1.181)	8.30/(.327)	6.58/(.259)	40.90/(1.610)		2	
43915-1218	10	51.41/(2.024)	40.00/(1.575)	8.30/(.327)	6.58/(.259)	50.90/(2.004)	6.35/(.250)	2	
43915-1219	12	61.41/(2.418)	50.00/(1.969)	8.30/(.327)	6.58/(.259)	60.90/(2.398)		2	
43915-1220	14	71.41/(2.811)	60.00/(2.362)	8.30/(.327)	6.58/(.259)	70.90/(2.791)		2	
43915-1221	10	51.41/(2.024)	40.00/(1.575)	3.50/(.137)	2.60/(.102)	50.90/(2.004)	2.36/(.093)	2	

**NOTES:**

- MATERIALS:  
HOUSING: 30% GLASS FILLED NYLON 4/6, U.L. 94V-0, COLOR: BLACK.  
TERMINAL: ALLOY 151  
PLATING: \*TIN OVER NICKEL.  
OR SELECT GOLD AND TIN OVER NICKEL.  
(SEE CHART)  
\* THE PRIMARY SHIPPING CARTON WILL BE LABELED  
COMPLIANT TO ROHS DIRECTIVE 2002/95/EC  
AND EU ANNEX II OF DIRECTIVE 2002/95/EC.  
CARTONS WITHOUT THIS LABEL MAY CONTAIN  
PRODUCT WITH TIN-LEAD.
- PRODUCT SPEC.: PSX-42815-0001
- PARTS ARE NOT TO BE MATED OR UNMATED WHILE CIRCUITS ARE LIVE.
- PART MATES WITH MOLEX RECEPTACLE 43914.
- WHEN USING OVERALL TIN PLATED TERMINALS:  
FOR APPLICATIONS INVOLVING VIBRATION AND/OR THERMAL CYCLING, MOLEX STRONGLY  
RECOMMENDS THE USE OF NYE LUBRICANT (NYGEL 7600) ON THE MATING  
SURFACES OF THE TERMINAL.
- POLARIZING SLOTS TO BE LOCATED BETWEEN CIRCUITS ON EITHER END  
OF HOUSING OF THE CIRCUIT 1 ROW, AS SHOWN.  
EXCEPTION: THE 6 CIRCUIT HOUSING WILL HAVE A SINGLE SLOT ON THE CIRCUIT 1 END ONLY.



**RECOMMENDED P.C. BOARD PLATED-THRU HOLE LAYOUT**  
(14 CIRCUIT LAYOUT SHOWN)

ADDED -1905 EC NO: UCP2006-1689 DRAWN: JOMERL 2006/0124 CHECKED: JOMERL 2006/0124 APPR: JOMERL 2006/0124 REV 1	QUALITY SYMBOLS $\nabla=0$ $\nabla=0$	GENERAL TOLERANCES (UNLESS SPECIFIED) mm INCH	DIMENSION STYLE MM/IN	SCALE 2:1	DESIGN UNITS METRIC	THIRD ANGLE PROJECTION	
	4 PLACES ±.008 3 PLACES ±.008 2 PLACES ±.02 1 PLACE ±.02 ANGULAR ± °	DRAWN BY JOMERL DATE 8/21/97	CHECKED BY JOMERL DATE 8/25/97	APPROVED BY FRY DATE 8/26/97	TITLE <b>VERTICAL HEADER          DUAL ROW, 6-14 CIRCUIT          MINI-FIT SR.</b>		
	DRAFT WHERE APPLICABLE MUST REMAIN WITHIN DIMENSIONS	SEE CHART	MATERIAL NO. SD-43915-002	DOCUMENT NO. SD-43915-002	MOLEX INCORPORATED		
	THIS DRAWING CONTAINS INFORMATION THAT IS PROPRIETARY TO MOLEX INCORPORATED AND SHOULD NOT BE USED WITHOUT WRITTEN PERMISSION			SHEET NO. 1 OF 1			