

## Connector - C-SCFI 1,5/6,3X0,8 - 3240052

Please be informed that the data shown in this PDF Document is generated from our Online Catalog. Please find the complete data in the user's documentation. Our General Terms of Use for Downloads are valid (<http://phoenixcontact.com/download>)




Slip-on sleeve, red, 0.5 ... 1.5 mm<sup>2</sup>, 6.3 x 0.8

### Why buy this product

- Electrolytic tin plating
- Hard-soldered crimping zone for maximum pull-out forces
- Halogen-free
- 'EASY ENTRY' for easy and reliable conductor entry

### Key Commercial Data

Packing unit	100 STK
GTIN	 4 046356 452700
GTIN	4046356452700

### Technical data

#### Dimensions

Length (b)	21.5 mm
Width (a)	6.3 mm
Maximum stripping length	7 mm
Length of insulation sleeve (c)	10.5 mm
Inner dimension of the insulating collar (d)	4.1 mm
Material thickness (g)	0.4 mm

#### Ambient conditions

Ambient temperature (operation)	-20 °C ... 105 °C
---------------------------------	-------------------

#### General

Color	red
Stripping length	7 mm

# Connector - C-SCFI 1,5/6,3X0,8 - 3240052

## Technical data

### General

Components	halogen-free
Flammability rating according to UL 94	V2
Material	Brass
Insulating material	PA
Coating	tin-plated

### Standards and Regulations

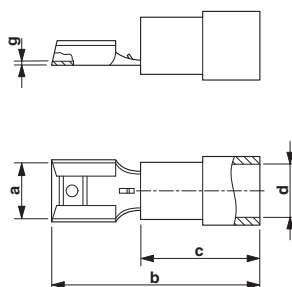
Flammability rating according to UL 94	V2
--	----

### Environmental Product Compliance

China RoHS	Environmentally friendly use period: unlimited = EFUP-e
	No hazardous substances above threshold values

## Drawings

Dimensional drawing



## Approvals

Approvals

Approvals

EAC / EAC

Ex Approvals

### Approval details

EAC		7500651.22.01.00246
-----	--	---------------------

## Connector - C-SCFI 1,5/6,3X0,8 - 3240052

### Approvals

EAC



EAC-Zulassung

Phoenix Contact 2018 © - all rights reserved  
<http://www.phoenixcontact.com>

PHOENIX CONTACT GmbH & Co. KG  
Flachsmarktstr. 8  
32825 Blomberg  
Germany  
Tel. +49 5235 300  
Fax +49 5235 3 41200  
<http://www.phoenixcontact.com>