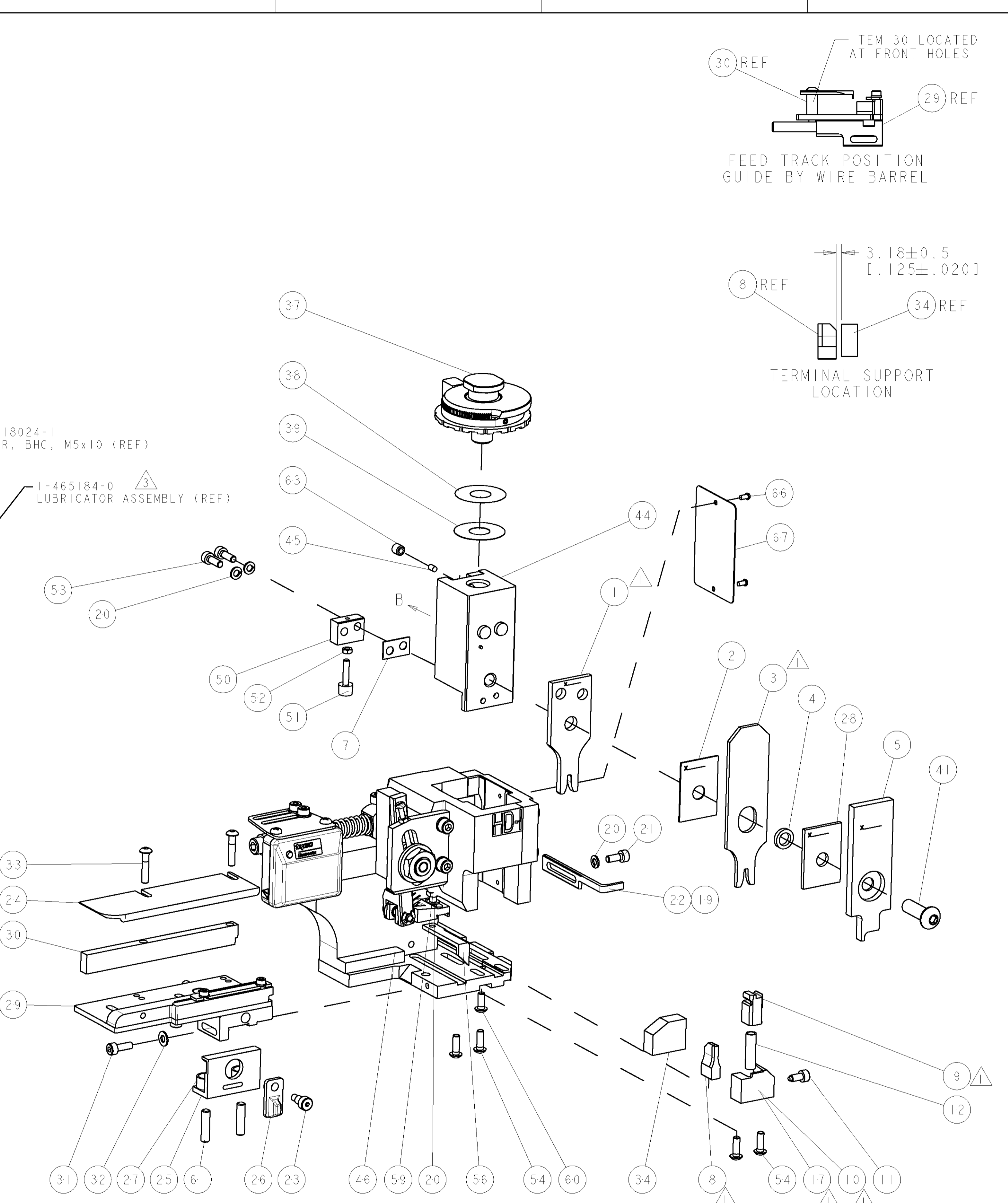
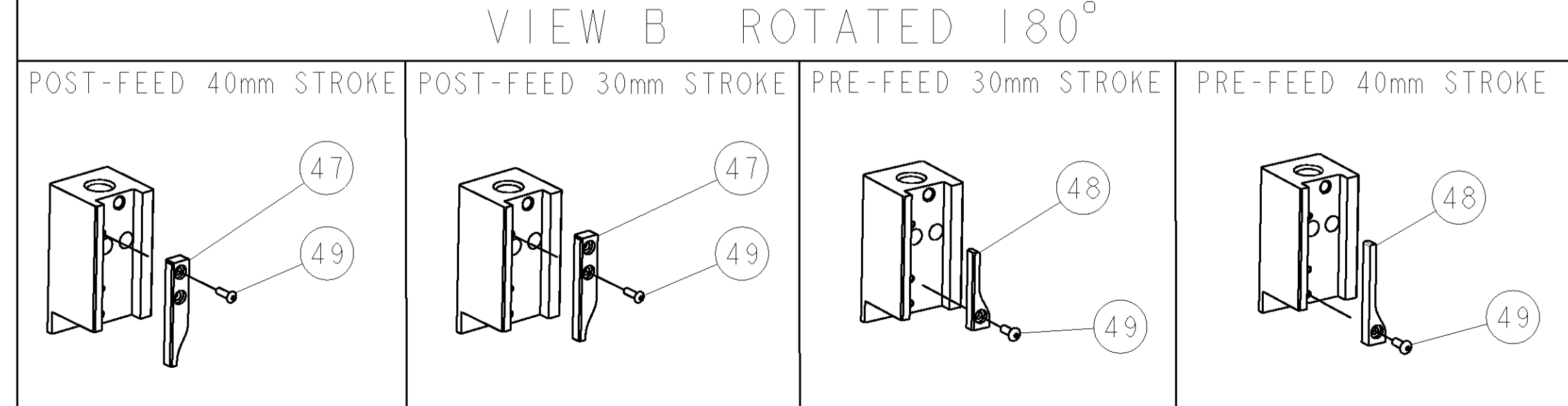


PART NUMBER	REV	TERMINATOR	FEED TYPE	DESCRIPTION
1528781-1	A	LEADMAKER	MECH POST FEED	CUTS CARRIER
1528781-2	A	BENCH	MECH PRE FEED	CUTS CARRIER
1528781-6	A	LEADMAKER	MECH POST FEED	CONTINUOUS CARRIER
7-1528781-1	A	LEADMAKER	MECH POST FEED	-1 AND SPARE PARTS
7-1528781-2	A	BENCH	MECH PRE FEED	-2 AND SPARE PARTS
7-1528781-6	A	LEADMAKER	MECH POST FEED	-6 AND SPARE PARTS
7-1528781-7	A	-	-	SPARE PARTS KIT

CRIMP DATA	SUMITOMO TERMINAL	SUMI/TYCO CRIMP SPECS	
TERMINAL NAME: 2.3mm SL SERIES RECEPTACLE			
CRIMP	SIZE	TYPE	RANGE
WIRE	2.36 [1.093 IN]	F	2.00mm ²
INSUL	2.79 [1.110 IN]	F	2.60-2.70 [1.102-1.106 IN]
WIRE STRIP LENGTH		APPL INSTRUCTIONS	
5.00-5.50 [1.97-.217 IN]		408-8322 & 408-8490	
TERMINAL SEWS DATA SHT		FEED	
APPL SPEC 8240-4942		12.57 [1.495 IN]	
TERMINALS APPLIED			
TYCO TERM PN	MANUF TERM PN	-	-
1949307-1	8240-4942	-	-
-	-	-	-
-	-	-	-
-	-	-	-
WIRE SIZE	CRIMP HEIGHT	REF SETTING	-
2.00mm ²	1.70 ± 0.05 [1.067 ± 0.002 IN]	C 6	-
1.00mm ² + 1.00mm ²	1.70 ± 0.05 [1.067 ± 0.002 IN]	C 6	-
0.75mm ² + 0.75mm ²	1.55 ± 0.05 [1.061 ± 0.002 IN]	D 8	-

- 1. RECOMMENDED SPARE PARTS.
- 2. GREASE RAM, CAM, CAM FOLLOWER AND FEED ROD LIGHTLY.
- 3. CERTAIN TERMINALS REQUIRE LUBRICATION. REFER TO THE APPLICATOR INSTRUCTION SHEET FOR MORE INFORMATION.
- 4. LUBRICATE DAILY PER THE APPLICATOR INSTRUCTION SHEET SUPPLIED WITH THE APPLICATOR.
- 5. ALL CRIMP DATA SUPPLIED BY THE TERMINAL MANUFACTURER.
- 6. APPLICATOR DESIGNED TO APPLY AVSS INSULATION TYPE.
- 7. CRIMP HEIGHTS CALCULATED BY TYCO ELECTRONICS UK, BASED ON TERMINAL MANUFACTURER'S CRIMP WIDTH.
- 8. WIRE & INSULATION RANGES SHOWN ARE TERMINAL RANGES. INS. RANGE FOR DOUBLE WIRE APPLICATION IS:- 2 X 2.00mm DIAMETER MAX.

*** WARNING**
 ON INSTALLATION, SET WIRE DISC TO LARGEST WIRE SIZE SETTING. USE OF SETTINGS BELOW MIN. REQUIRED CRIMP HEIGHT SETTING WILL CAUSE DAMAGE TO CRIMP TOOLING.



LOC	DIST	REV	DESCRIPTION	DATE	DWN	APVD
A	66	-	SEE ECO-07-009622	24APR2007	LJL	MC

QTY	REV	DESCRIPTION	ITEM NO
-	-	-	73
-	-	-	72
-	-	-	71
-	-	-	70
-	-	-	69
-	-	-	68
-	-	-	67
-	-	-	66
-	-	-	65
-	-	-	64
-	-	-	63
-	-	-	62
-	-	-	61
-	-	-	60
-	-	-	59
-	-	-	58
-	-	-	57
-	-	-	56
-	-	-	55
-	-	-	54
-	-	-	53
-	-	-	52
-	-	-	51
-	-	-	50
-	-	-	49
-	-	-	48
-	-	-	47
-	-	-	46
-	-	-	45
-	-	-	44
-	-	-	43
-	-	-	42
-	-	-	41
-	-	-	40
-	-	-	39
-	-	-	38
-	-	-	37
-	-	-	36
-	-	-	35
-	-	-	34
-	-	-	33
-	-	-	32
-	-	-	31
-	-	-	30
-	-	-	29
-	-	-	28
-	-	-	27
-	-	-	26
-	-	-	25
-	-	-	24
-	-	-	23
-	-	-	22
-	-	-	21
-	-	-	20
-	-	-	19
-	-	-	18
-	-	-	17
-	-	-	16
-	-	-	15
-	-	-	14
-	-	-	13
-	-	-	12
-	-	-	11
-	-	-	10
-	-	-	9
-	-	-	8
-	-	-	7
-	-	-	6
-	-	-	5
-	-	-	4
-	-	-	3
-	-	-	2
-	-	-	1

QTY	REV	DESCRIPTION	ITEM NO
-	-	-	84
-	-	-	83
-	-	-	82
-	-	-	81
-	-	-	80
-	-	-	79
-	-	-	78
-	-	-	77
-	-	-	76
-	-	-	75
-	-	-	74

DIMENSIONS: mm [IN]	TOLERANCES UNLESS OTHERWISE SPECIFIED: 0 PLC ± 1 PLC ± 2 PLC ± 3 PLC ± 4 PLC ± ANGLES ±	DIMENSIONS: mm [IN]	TOLERANCES UNLESS OTHERWISE SPECIFIED: 0 PLC ± 1 PLC ± 2 PLC ± 3 PLC ± 4 PLC ± ANGLES ±
MATERIAL: -		FINISH: -	

DWG: J5MAR2007 CHK: M CLIFFORD APVD: J5MAR2007 PRODUCT SPEC: - APPLICATION SPEC: See Table WEIGHT: - CUSTOMER DRAWING: -	tyco Tyco Electronics Harrisburg, PA 17105-3608	NAME: FINE ADJUST SIDE FEED HDI APPLICATOR SIZE: A1 CAGE CODE: 00779 DRAWING NO: C=1528781 SCALE: 3:5 SHEET: 1 OF 1 REV: A
--	--	--