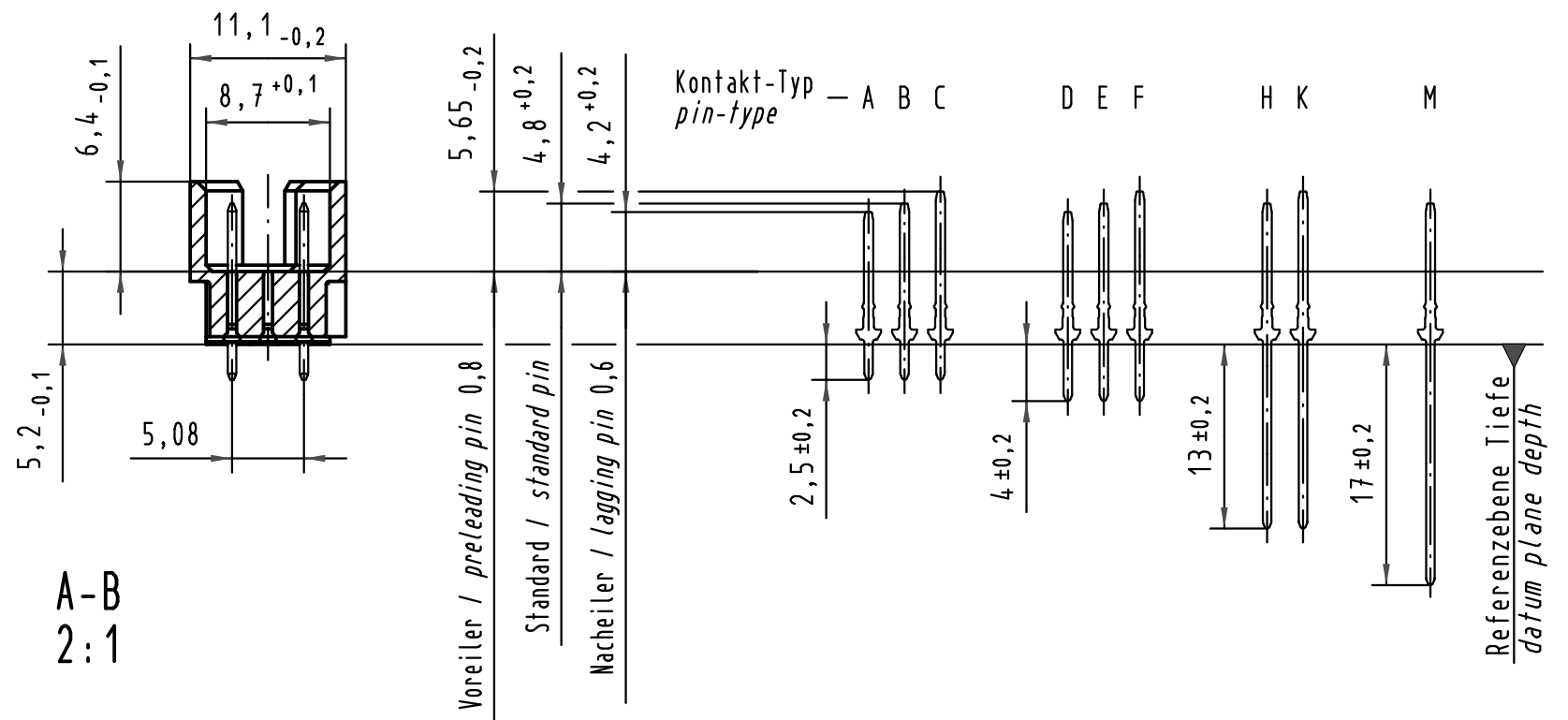
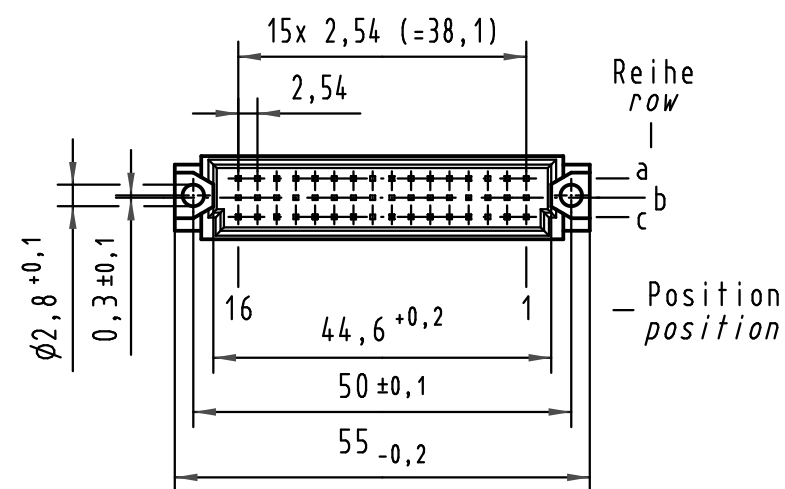
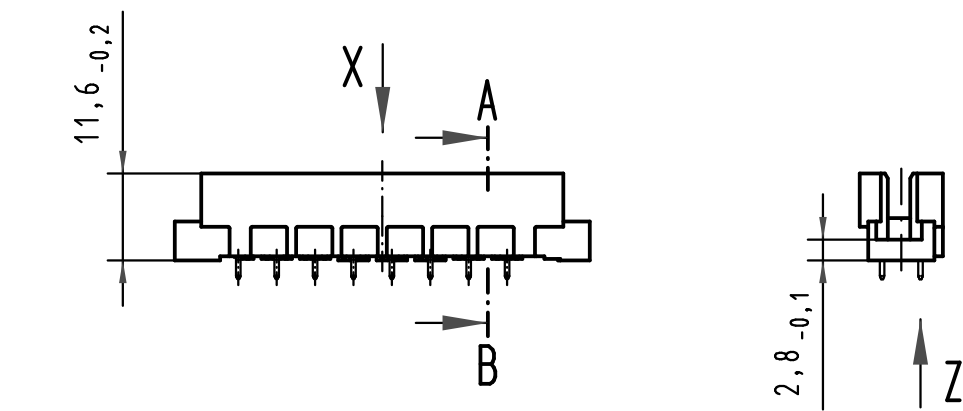
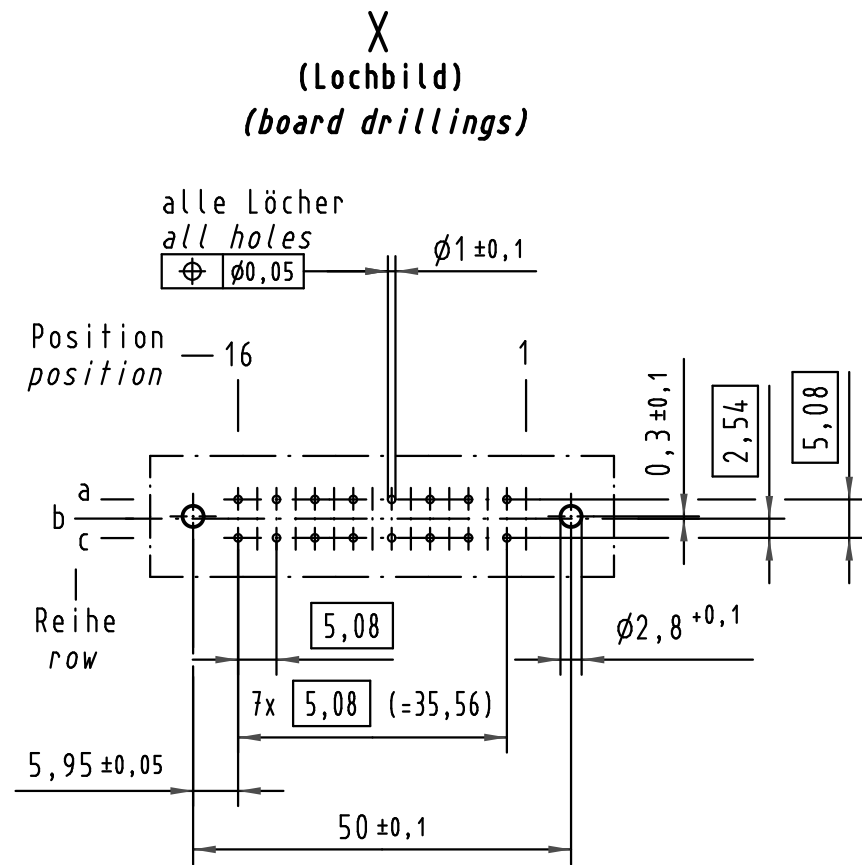
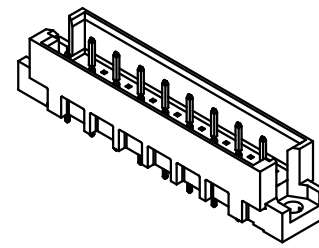
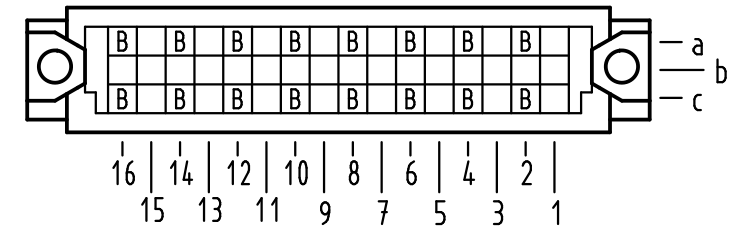


Alle Rechte vorbehalten/ All rights reserved

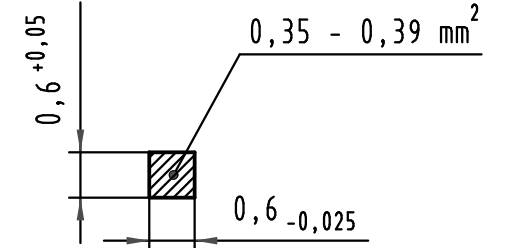


**X** Kontaktbelegung  
contact loading



**Z**  
10:1

Querschnitt der  
Lötanschlüsse:  
cross-section of  
solder terminations:



09 28 116 6902	2	Au flash over PdNi over Ni
Bestell-Nr. part-no.	Anforderungsstufe nach IEC performance level acc. to IEC	Kontaktoberfläche contact plating

 All Dimensions in mm Original Size DIN A 3	Techn. Character.			Nicht tolerierte Maßel/Free size tolerances IEC 60603-2	
		Dat.	Name	Maßstab/Scale	
	Detail.	11.06.01	Rie.	1:1	
	Insp.	11.06.01	Pa.	2:1	
35540	15.07.09	Hage.	Stand.	10:1	
34650	07.01.08	Hage.	HARTING Electronics GmbH & Co. KG D-32339 ESPELKAMP		
29836					
Mod.	Dat.	Name	<b>TB 09 28 116 x902</b>		Blatt/ page
			Sub.		

Bauform 2R Messerleiste  
Einlot 2,5 , 16pol.  
type 2R male connector  
solder 2,5 , 16pol.

**TB 09 28 116 x902**

Blatt/ page

Sub.