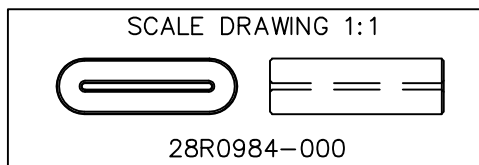


DETAIL "A"
CHAMFER
SCALE=6:1

**UNCONTROLLED
DOCUMENT**

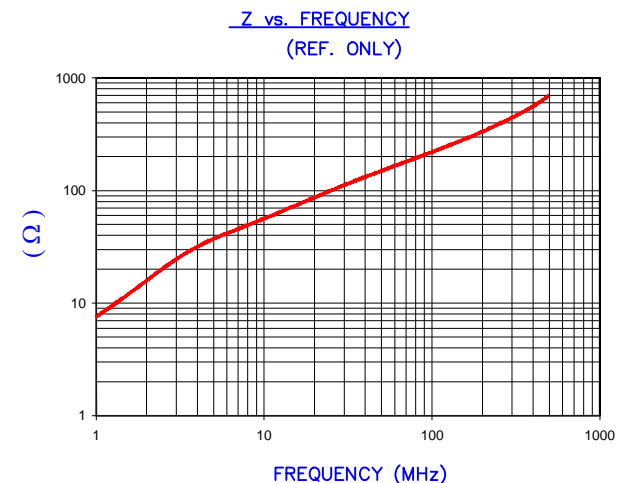
NOTES: UNLESS OTHERWISE SPECIFIED

1. COSMETIC SPECIFICATION REFER TO WI-QA-038.



RoHS

IMPEDANCE (Z)			
Frequency	25 MHz	100 MHz	300 MHz
Nominal (REF)	100 Ω	220 Ω	430 Ω
Minimum	- Ω	176 Ω	- Ω



AGILENT E4991A Impedance/Material Analyzer
HP 16092A Test Fixture, REF # 2970

FERRITE CORE DIMENSIONS (SPEC):mm[Inches]

A	25.00 [.984]	+ 0.50 [.020]
B	18.00 [.709]	+ 0.38 [.015]
C	24.00 [.945]	+ 0.50 [.020]
D	7.70 [.303]	+ 0.30 [.012]
E	0.90 [.035]	+ 0.20 [.008]

WEIGHT/1000 19.41 kgs [42.80 Lbs]

DIMENSIONS ARE IN mm [INCHES].				This print is the property of Laird Tech. and is loaned in confidence subject to return upon request and with the understanding that no copies shall be made without the written consent of Laird Tech. All rights to design or invention are reserved.			
REV	DESCRIPTION	DATE	INT				
E	UPDATE COMPANY LOGO	05/27/15	QIU	PROJECT/PART NUMBER:		REV	DRAWN BY:
D	UPDATE MIN Z SPECS & COMPANY LOGO	07/27/07	JRK	28R0984-000		E	JRK
C	UPDATE MIN Z SPECS @100 MHZ ADD REF #	01/23/04	JRK	DATE:	05/23/02	SCALE:	2:1
B	UPDATE FORMAT & Z SPECS	01/31/03	JRK	CAD #	28R0984-000-E	TOOL #	R0984
A	ORIGINAL DRAFT	05/23/02	JRK			MATERIAL: FERRITE	
REV	DESCRIPTION	DATE	INT				