

Customer Information Sheet

DRAWING No.: M50-360XX42R

SHEET 3 OF 4

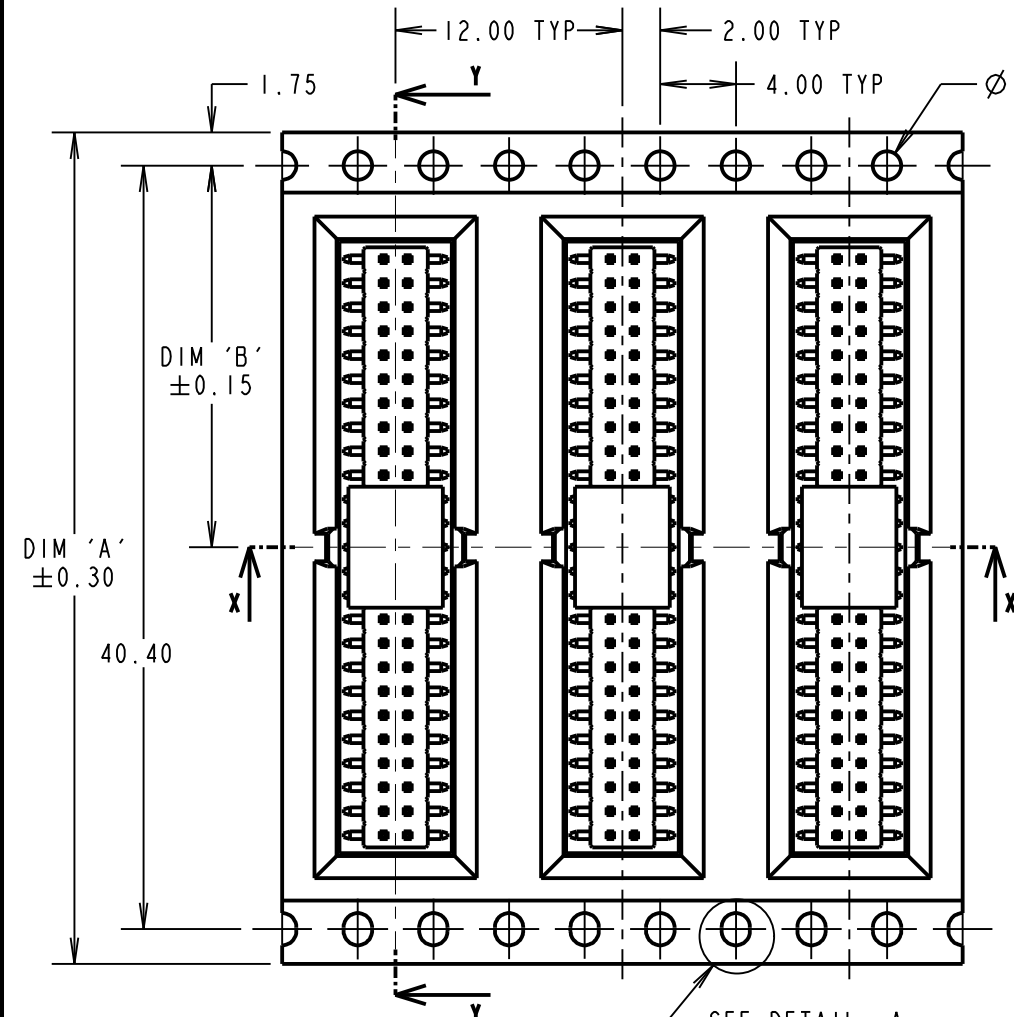
IF IN DOUBT - ASK

©

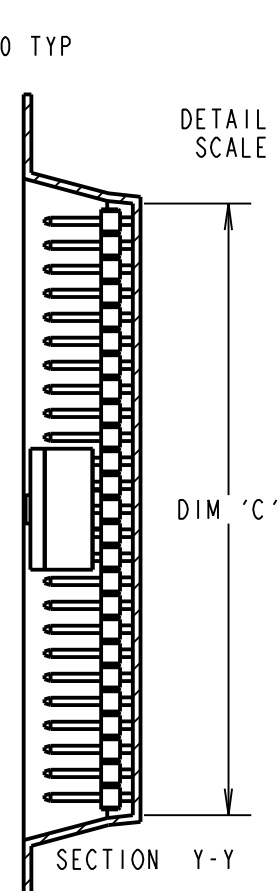
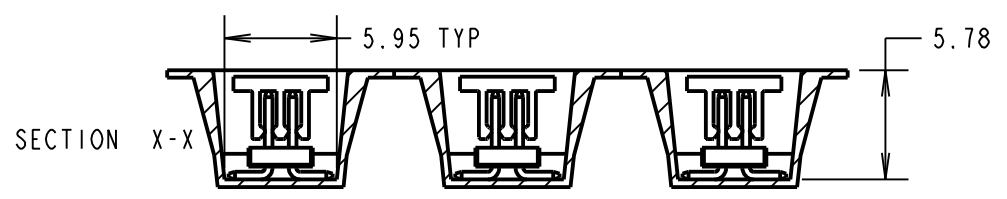
NOT TO SCALE

THIRD ANGLE PROJECTION

ALL DIMENSIONS IN mm



TAPE DETAILS FOR 20 & 25 WAYS

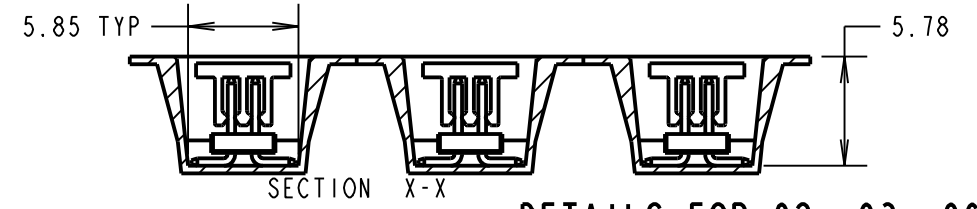
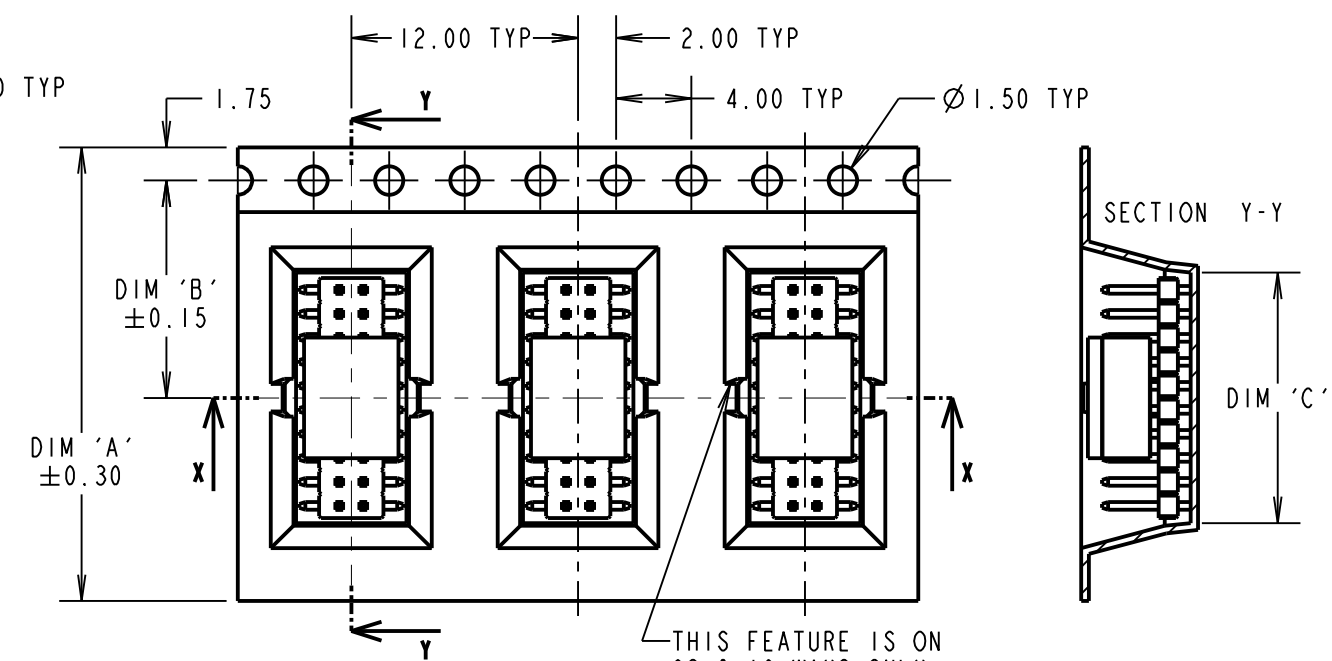


ORDER CODE:
M50-360XX42R

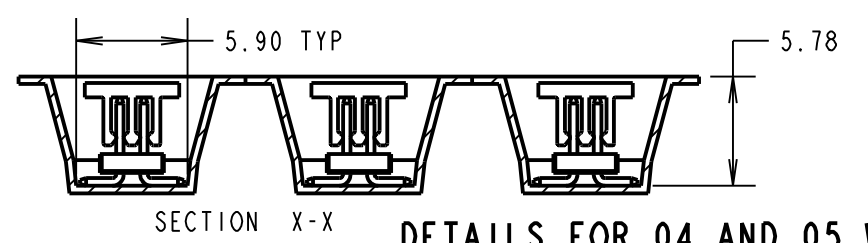
No. OF CONTACTS PER ROW:
02, 03, 04, 05, 06, 10, 20, 25

FINISH:
42 = SELECTIVE GOLD & 100% TIN OVER NICKEL

TAPE DETAILS FOR 02, 03, 04, 05, 06 & 10 WAYS

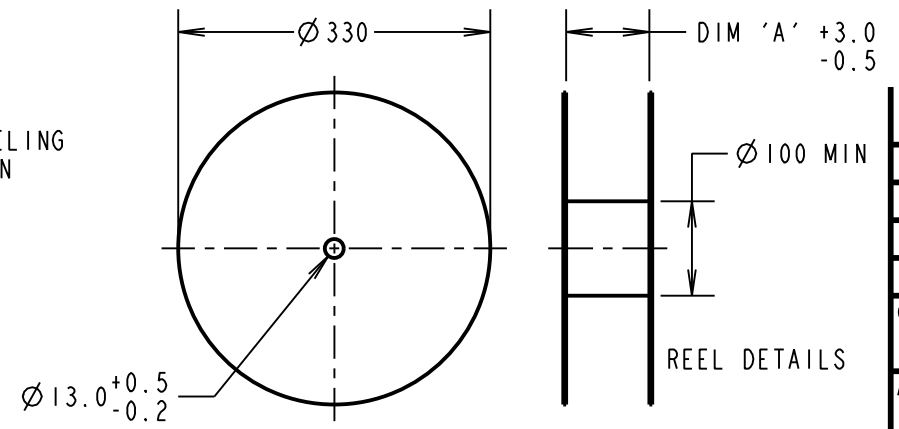
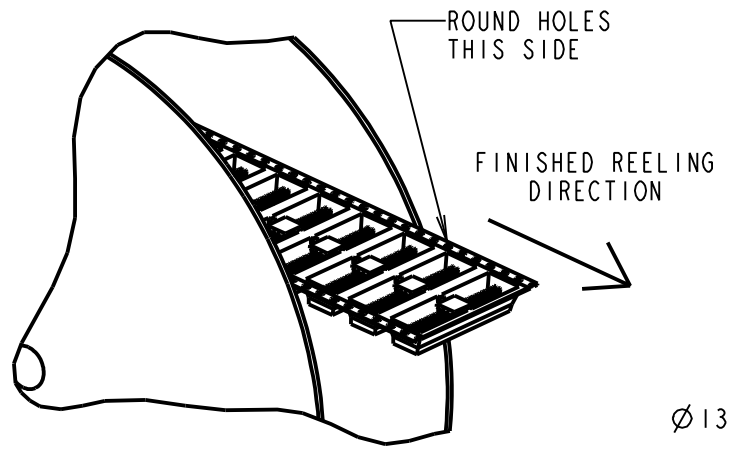


DETAILS FOR 02, 03, 06 AND 10 WAYS



DETAILS FOR 04 AND 05 WAYS

REELED PART No.	DIM 'A'	DIM 'B'	DIM 'C'	REEL QTY
M50-3600242R	16.00	7.50	3.60	750
M50-3600342R			4.00	
M50-3600442R			5.40	
M50-3600542R			6.65	
M50-3600642R	24.00	11.50	7.90	750
M50-3601042R			13.00	
M50-3602042R	44.00	20.20	25.70	750
M50-3602542R			32.10	



MSP	12	11.04.16	13380
NAME	ISS.	DATE	C/NOTE
APPROVED:		M.PERREN	
CHECKED:		S.BENNETT	
DRAWN:		R.ADDE	
CUSTOMER REF.:			
ASSEMBLY DRG:			

- NOTES:
- CUMULATIVE TOLERANCES OVER 10 PITCHES = ±0.20mm
 - TAPE & REELING TO BE IN ACCORDANCE WITH EIA-481 (ELECTRONIC INDUSTRIES ASSOCIATION).
 - FOR CONNECTOR DETAILS SEE SHEET 4.

<p>www.harwin.com technical@harwin.com</p>	<p>THIS DRAWING AND ANY INFORMATION OR DESCRIPTIVE MATTER SET OUT HEREON ARE CONFIDENTIAL AND COPYRIGHT PROPERTY OF THE HARWIN GROUP AND MUST NOT BE DISCLOSED, LOANED, COPIED OR USED FOR MANUFACTURING, TENDERING OR FOR ANY OTHER PURPOSE WITHOUT THEIR WRITTEN PERMISSION.</p>	<p>TOLERANCES</p> <p>X. = ±1mm X.X = ±0.50mm X.XX = ±0.10mm X.XXX = ±0.01mm</p> <p>ANGLES = ±5° UNLESS STATED</p>	<p>MATERIAL:</p> <p>SEE ABOVE</p> <p>FINISH: SEE ABOVE</p> <p>S/AREA: mm²</p>	<p>TITLE: 1.27mm PITCH DIL SMT VERT LOW PROFILE SOCKET ASSY (TAPE & REEL)</p> <p>DRAWING NUMBER: M50-360XX42R</p>	<p>SHT 3 OF 4</p>
--	--	---	--	--	-------------------

Customer Information Sheet

DRAWING No.: M50-360XX42R

SHEET 4 OF 4

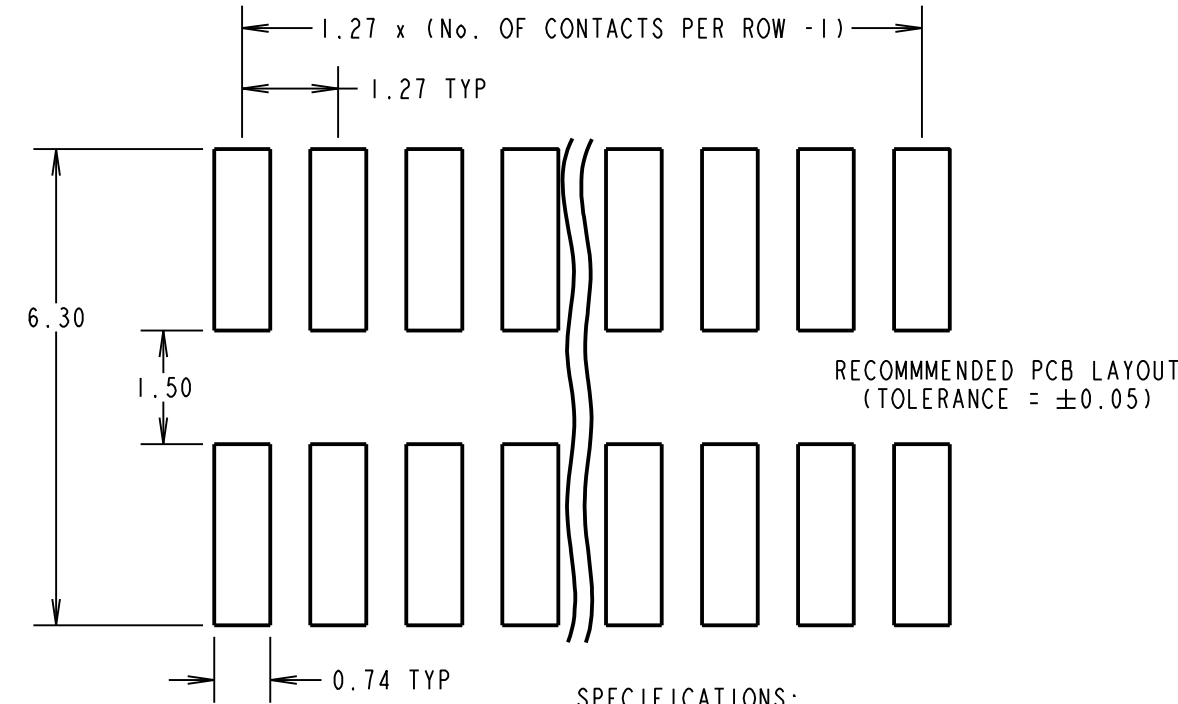
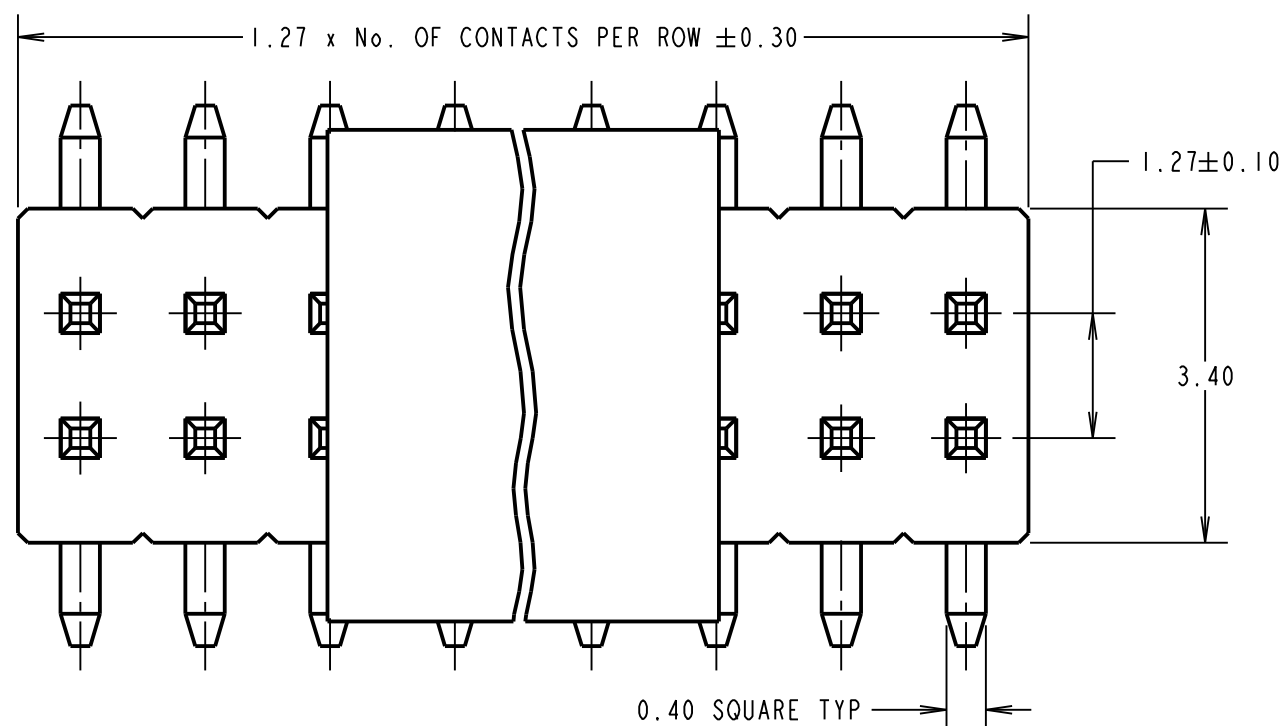
IF IN DOUBT - ASK

(C)

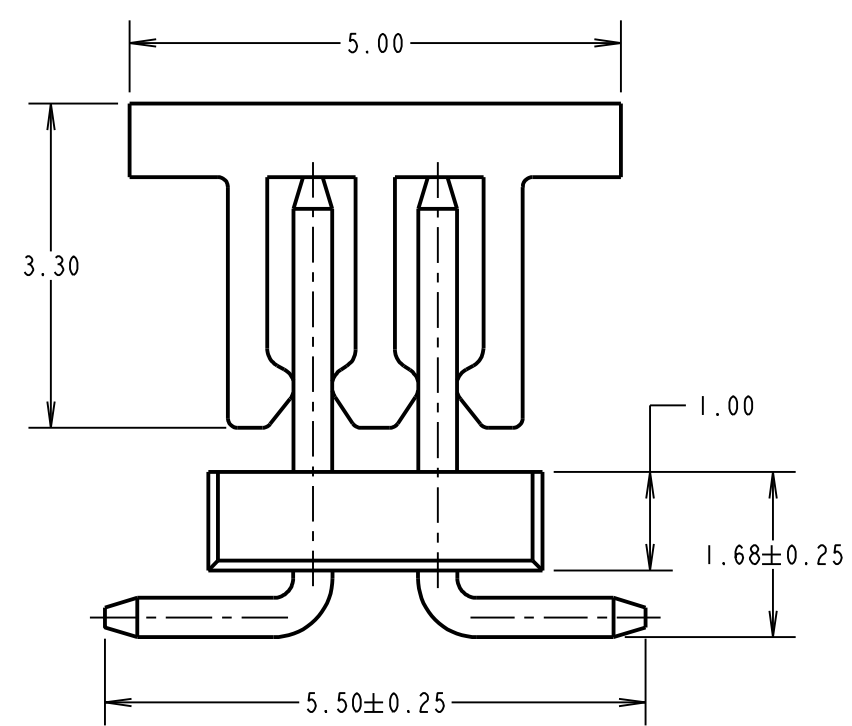
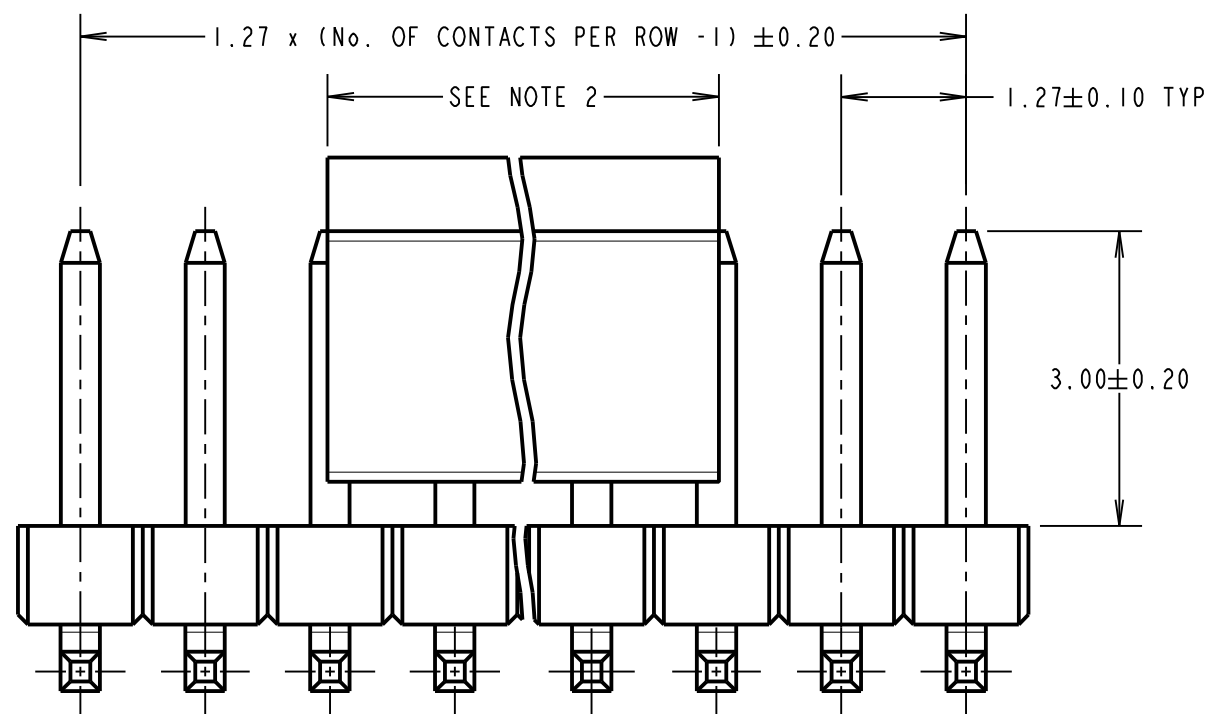
NOT TO SCALE

THIRD ANGLE PROJECTION

ALL DIMENSIONS IN mm



SPECIFICATIONS:
MATERIAL:
 MOULDING = HIGH TEMP THERMOPLASTIC,
 UL94V-0, BLACK
CONTACTS = COPPER ALLOY
FINISH:
 CONTACTS = 0.70 TO 1.30 μ NICKEL ALL OVER,
 0.08 TO 0.15 μ GOLD ON CONTACT AREA,
 2.50 TO 3.00 μ 100% TIN ON TAILS
ELECTRICAL:
 CURRENT RATING = 1A
 CONTACT RESISTANCE = 20m Ω MAX
 INSULATION RESISTANCE = 1000M Ω MIN
 DIELECTRIC WITHSTANDING = 1000V AC FOR
 ONE MINUTE
MECHANICAL:
 DURABILITY = 300 CYCLES MIN
ENVIRONMENTAL:
 TEMPERATURE RANGE = -40°C TO +105°C
PACKING:
 BOX
 FOR COMPLETE SPECIFICATION, SEE COMPONENT
 SPECIFICATION C029XX (LATEST ISSUE)



- NOTES:**
- CO-PLANARITY OF TAILS FOR 02 TO 30 CONTACTS PER ROW = 0.15mm,
 31 TO 50 CONTACTS PER ROW = 0.20mm.
 - PICK AND PLACE CAP LENGTH = 3.60mm FOR 02 TO 05 CONTACTS PER ROW,
 6.40mm FOR 06 TO 50 CONTACTS PER ROW.
 - ALL TOLERANCES ARE ± 0.15 , UNLESS OTHERWISE STATED.
 - FOR TAPE AND REEL DETAILS, SEE SHEET 3.

ORDER CODE:
M50-360XX42R

No. OF CONTACTS PER ROW: _____
 02, 03, 04, 05, 06, 10, 20, 25

FINISH: _____
 42 = SELECTIVE GOLD & 100% TIN OVER NICKEL

MSP	12	11.04.16	13380
NAME	ISS.	DATE	C/NOTE
APPROVED:		M.PERREN	
CHECKED:		S.BENNETT	
DRAWN:		R.ADDE	
CUSTOMER REF.:			
ASSEMBLY DRG:			

HARWIN

www.harwin.com
 technical@harwin.com

THIS DRAWING AND ANY INFORMATION OR DESCRIPTIVE MATTER SET OUT HEREON ARE CONFIDENTIAL AND COPYRIGHT PROPERTY OF THE HARWIN GROUP AND MUST NOT BE DISCLOSED, LOANED, COPIED OR USED FOR MANUFACTURING, TENDERING OR FOR ANY OTHER PURPOSE WITHOUT THEIR WRITTEN PERMISSION.

TOLERANCES

X	= ± 1 mm
X.X	= ± 0.50 mm
X.XX	= ± 0.10 mm
X.XXX	= ± 0.01 mm
ANGLES = $\pm 5^\circ$	
UNLESS STATED	

MATERIAL:
 SEE ABOVE

FINISH: SEE ABOVE

S/AREA: mm²

TITLE: 1.27mm PITCH DIL SMT VERT
 LOW PROFILE SOCKET ASSY
 (TAPE & REEL)

DRAWING NUMBER:
M50-360XX42R

SHT
 4 OF 4