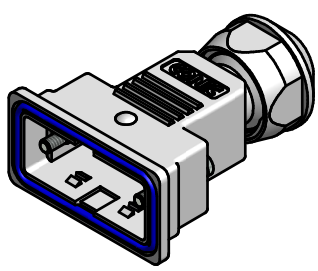


**NOTES:**

1. MATERIALS:  
 HOOD, GLAND, COMPR.-RING: ABS UL94 V-0 METALLIZED  
 FRONTSEALING: SILICONE VMQ BLUE  
 CABLE SEALING: NBR BLACK  
 JACK-SCREW: STAINLESS STEEL  
 O-RING: NBR BLACK  
 CABLE STRAIN RELIEF: STEEL, NI-PLATED  
 SCREWS: STEEL, NI-PLATED  
 SHIELDING BRACKET: CU-ALLOY, NI-PLATED
- (b) 2. TEMPERATURE RANGE: -30°C TO +80°C
3. RECOMMENDED TORQUE FOR SCREW:  
 35Ncm (3.1 in.LB)  
 MAX. TORQUE: 68Ncm (6 in.LB)
4. SINGLE PACKED

\* COMPLETELY TIGHTENED



Directive 2002/95/EC RoHS compliant

THIS DRAWING MAY NOT BE COPIED OR REPRODUCED IN ANY WAY, AND MAY NOT BE PASSED ON TO A THIRD PARTY WITHOUT WRITTEN PERMISSION. OWNERSHIP AND COPYRIGHT OF CONEC GmbH DO NOT ALTER CAD DRAWING BY HAND	tolerance ± 0,3 unless otherw. specified		dim. in mm		scale: 1,5:1 (2:1)	
	date		name		material: see notes	
	drawn	25.09.2012	Huether		title:	
	appd.	11.10.2012	Kuehle		<b>WATER RESISTANT D-SUB HOOD</b>	
	norm				(b) SHIELDED 9 POS.	
3 x b	A5093	07.02.2014	Heinrich		SHORT SCREW 4-40UNC STAINLESS STEEL	
a	Origin				dwg no:	
rev.	description	date	name	<b>CONEC</b>	15K1A1155	DIN-A3
					part no: (b) 15-004810	sh: 1