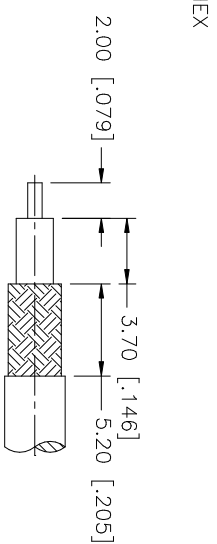
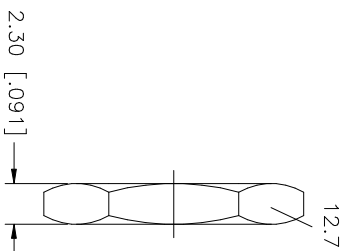
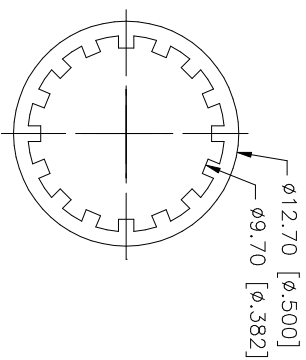
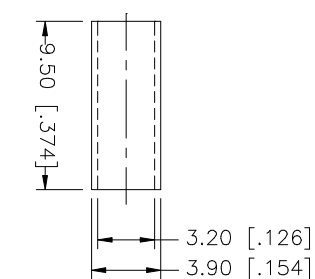
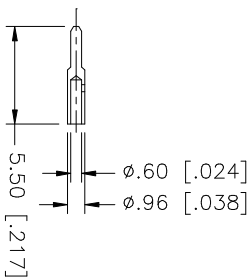
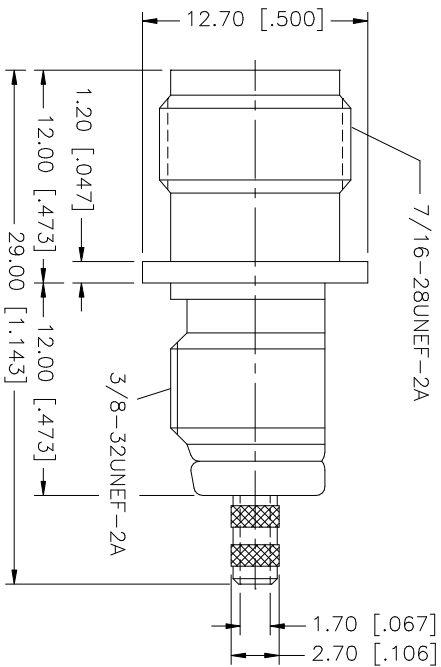
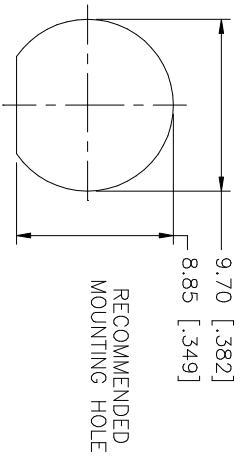


REV.	DATE	DESCRIPTION
NC	10/25/02	INITIAL RELEASE



- CRIMP NOTES:
1. CRIMPED FERRULE HEX CRIMP SIZE .128"
 2. CRIMPED CONTACT PIN SQ. CRIMP SIZE .7mm
 3. MAX. PANEL THICKNESS = 7mm

9	HEX NUT	BRASS	NICKEL								
8	LOCK WASHER	BRASS	NICKEL	UNLESS OTHERWISE SPECIFIED DIMENSIONS ARE IN MILLIMETERS		APPROVALS		DATE			
7	FERRULE	COPPER	NICKEL	DIMENSIONS IN [] ARE IN INCHES FOR CUSTOMER REFERENCE ONLY		DRAWN		G.R.S.		10/25/02	
6	CONTACT PIN	BRASS	GOLD	UNLESS OTHERWISE SPECIFIED TOLERANCES FOR INCHES ARE: .XXX = ± 0.005" .XX = ± 0.010" .X = ± 0.020"		CHECKED					
5	BARREL	BRASS	NICKEL			ISSUED					
4	LOCK RING	BRASS	NICKEL								
3	CONTACT PIN	PHOS. BRONZE	GOLD								
2	INSULATOR	TEFLON	NATURAL								
1	BODY	BRASS	NICKEL								
DESCRIPTION				MATERIAL				FINISH			
				DO NOT SCALE DRAWING							
				SCALE				NA			
				PART NO.				122487			
				SHEET				1 OF 1			
				REV.				NC			
<p>Amphenol - Connex CONNECTOR CORPORATION</p> <p>TNC BULKHEAD CRIMP JACK (FOR RG-316/U, 174/U, 188A/U CABLE)</p>											