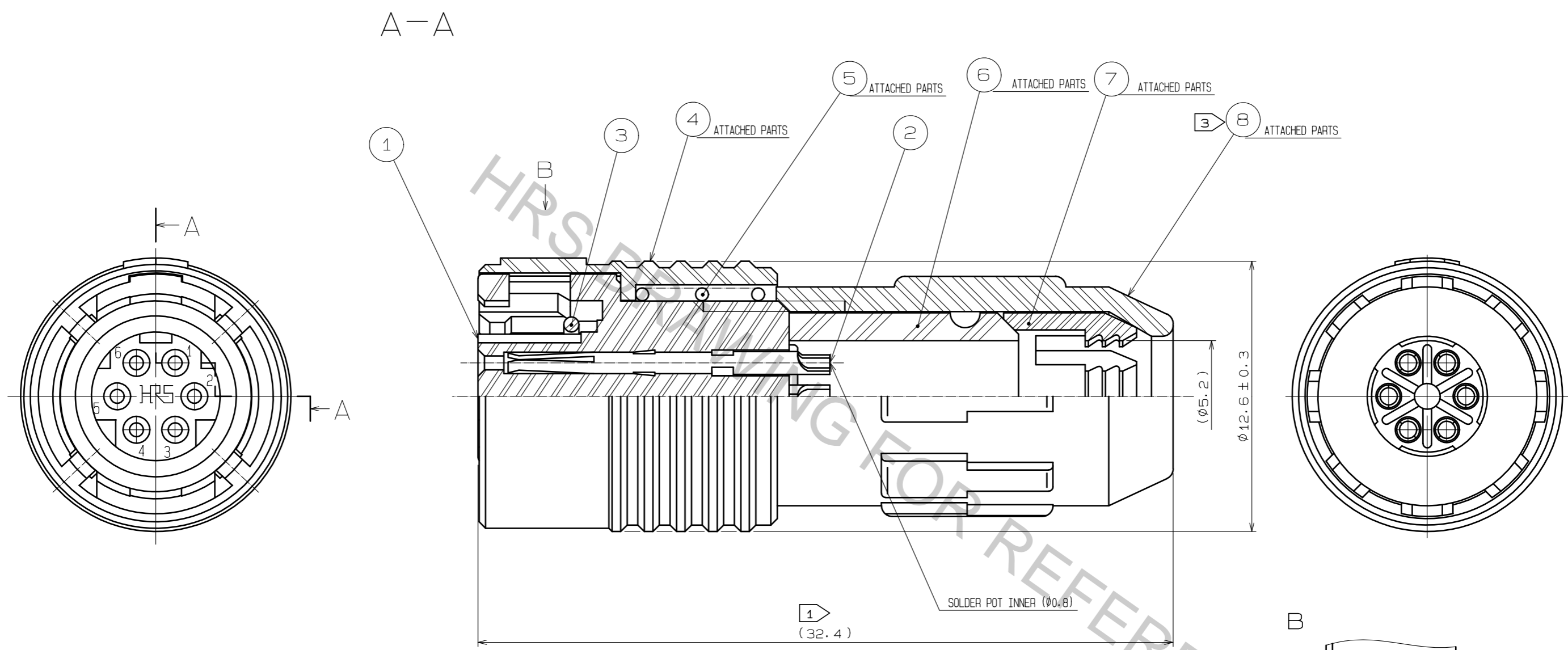


Aug.1.2018 Copyright 2018 HIROSE ELECTRIC CO., LTD. All Rights Reserved.
 In case that the application demands a high level of reliability, such as automotive,
 please contact a company representative for further information.



- NOTES
- ① TOTAL LENGTH BECOMES 29.8±1 WHEN ⑧ IS SCREWED INTO ① COMPLETELY.
 - ② TABLE FOR ASSEMBLY AND SOLDERING IS AVAILABLE HR30-6P-6S-T01.
 - ③ THE RECOMMENDED CLAMP TORQUE OF REF. No. ⑧ TO BE 0.5N·m.
 LOCTITE 263, LOCPRIMER 7649, HENKEL JAPAN IS RECOMMENDED TO PREVENT REF. No. ⑧ FROM LOOSENING.
 SPACER FOR ASSEMBLY IS AVAILABLE HR30-6P-T02.
 - ④ SURFACE PLATING : GOLD PLATING 0.2 μm min.
 UNDER PLATING : NICKEL PLATING 2 μm min.
 - ⑤ THE CABLE PULL AND TWISTING STRENGTH AND OTHER CHARACTERISTICS MAY DIFFER,
 DEPENDING ON THE CABLE STRUCTURE.
 PLEASE CONFIRM BEFORE THE USE.

4	PBT	(BLACK) UL94V-0	8	PBT	(BLACK) UL94V-0			
3	SIR	(RED)	7	POLYACETAL	NATURAL			
2	BRONZE ALLOY	④	6	CR	(BLACK)			
1	PPS	(BLACK) UL94V-0	5	STAINLESS STEEL				
NO.	MATERIAL	FINISH . REMARKS	NO.	MATERIAL	FINISH . REMARKS			
UNITS	mm	SCALE	5 : 1	COUNT	DESCRIPTION OF REVISIONS	DESIGNED	CHECKED	DATE
HRS HIROSE ELECTRIC CO., LTD.		APPROVED	: HY. KOBAYASHI	18.02.26	DRAWING NO.	EDC-112011-31-00		
		CHECKED	: HY. KOBAYASHI	18.02.26	PART NO.	HR30-6P-6S(31)		
		DESIGNED	: DS. MATSUNE	18.02.26	CODE NO.	CL130-0010-4-31		
		DRAWN	: DS. MATSUNE	18.02.26		1/1		