

Amphenol
FCi

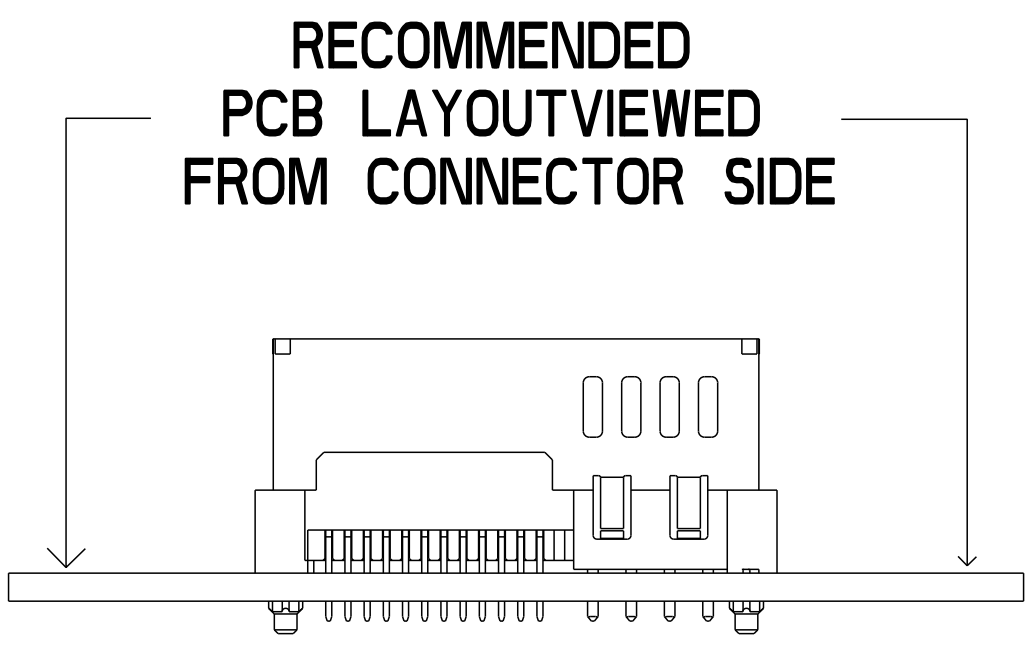
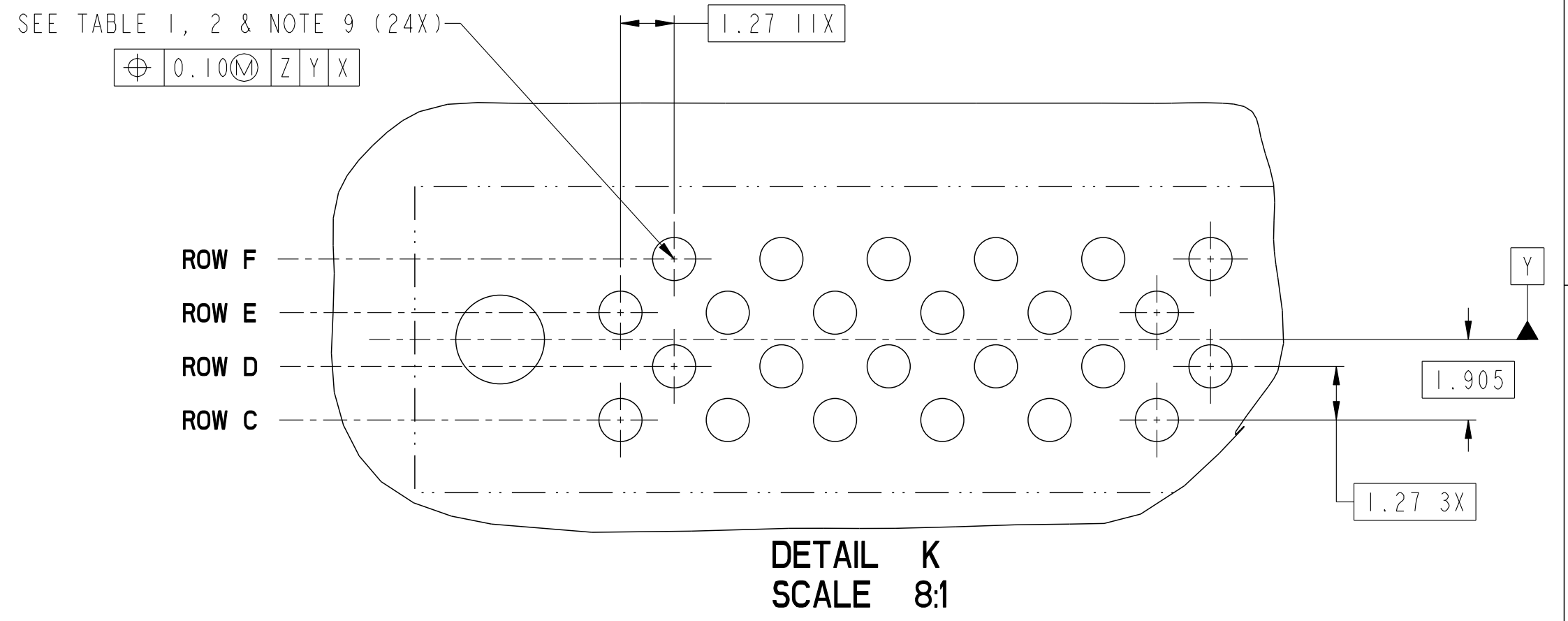
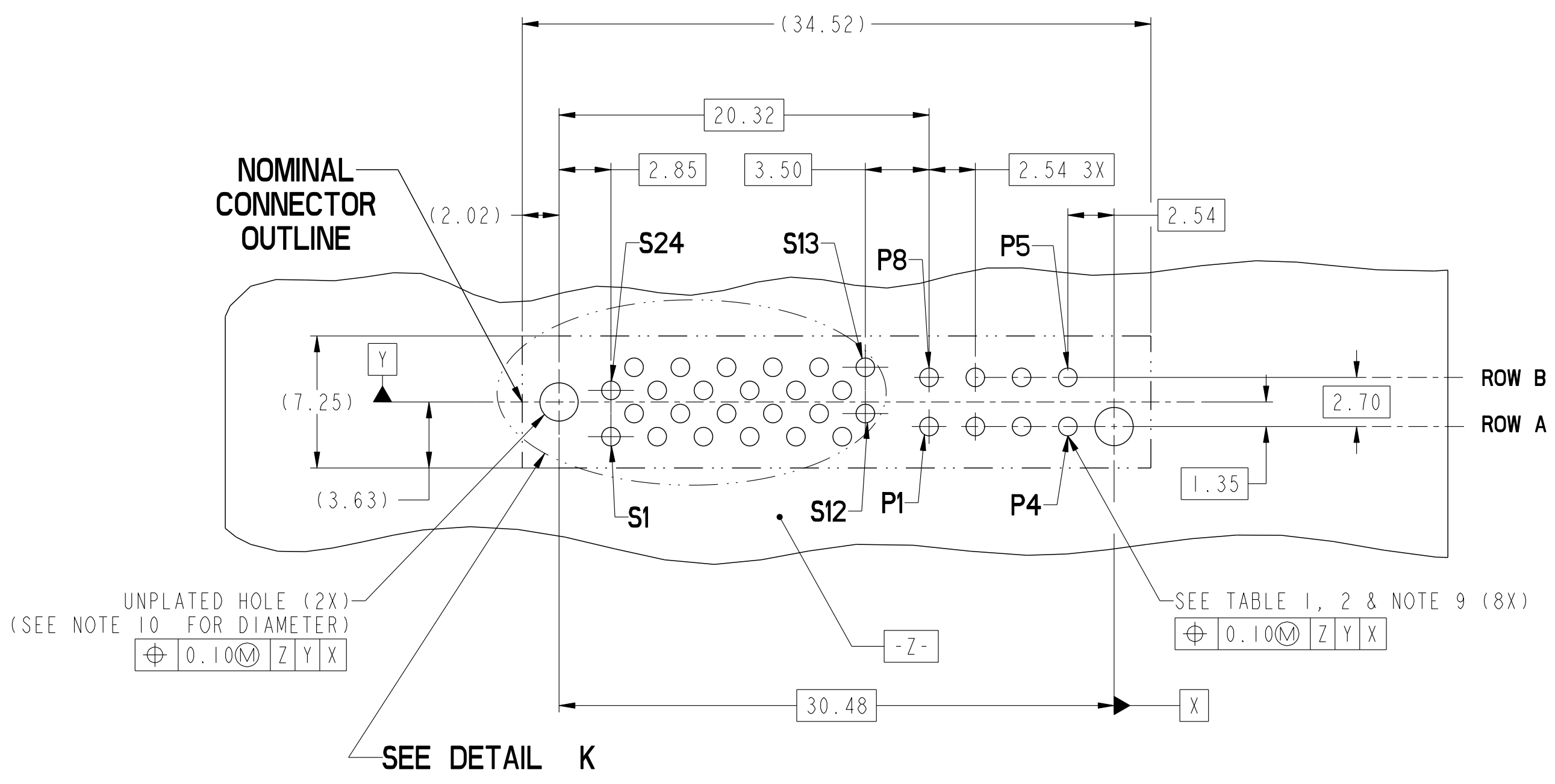
© 2016 AFci

spec ref	-	dr	Wei-Long Zhang	2011/11/08	projection	MM	size	A2	scale	4:1
tolerance std	ASME Y14.5	eng	Sunny2 Liu	2016/05/05			ecn no	ELX-DG-24036-1		
surface	TOLERANCES UNLESS OTHERWISE SPECIFIED linear 0.X ±0.3 0.XX ±0.10 0.XXX ±0.050 angular 0° ±2°	chr	Terris Liu	2016/05/20			rel level	Released		
		appr	Pei-Ming Zheng	2016/05/24			product family	HPCE		
Amphenol FCi VERT RECT (24S+8P) HIGH POWER CARD EDGE		cat. no.	-			Product - Customer Drw	sheet 1 of 4	rev	B	

PDS: Rev :B

STATUS:Released

Printed: May 27, 2016



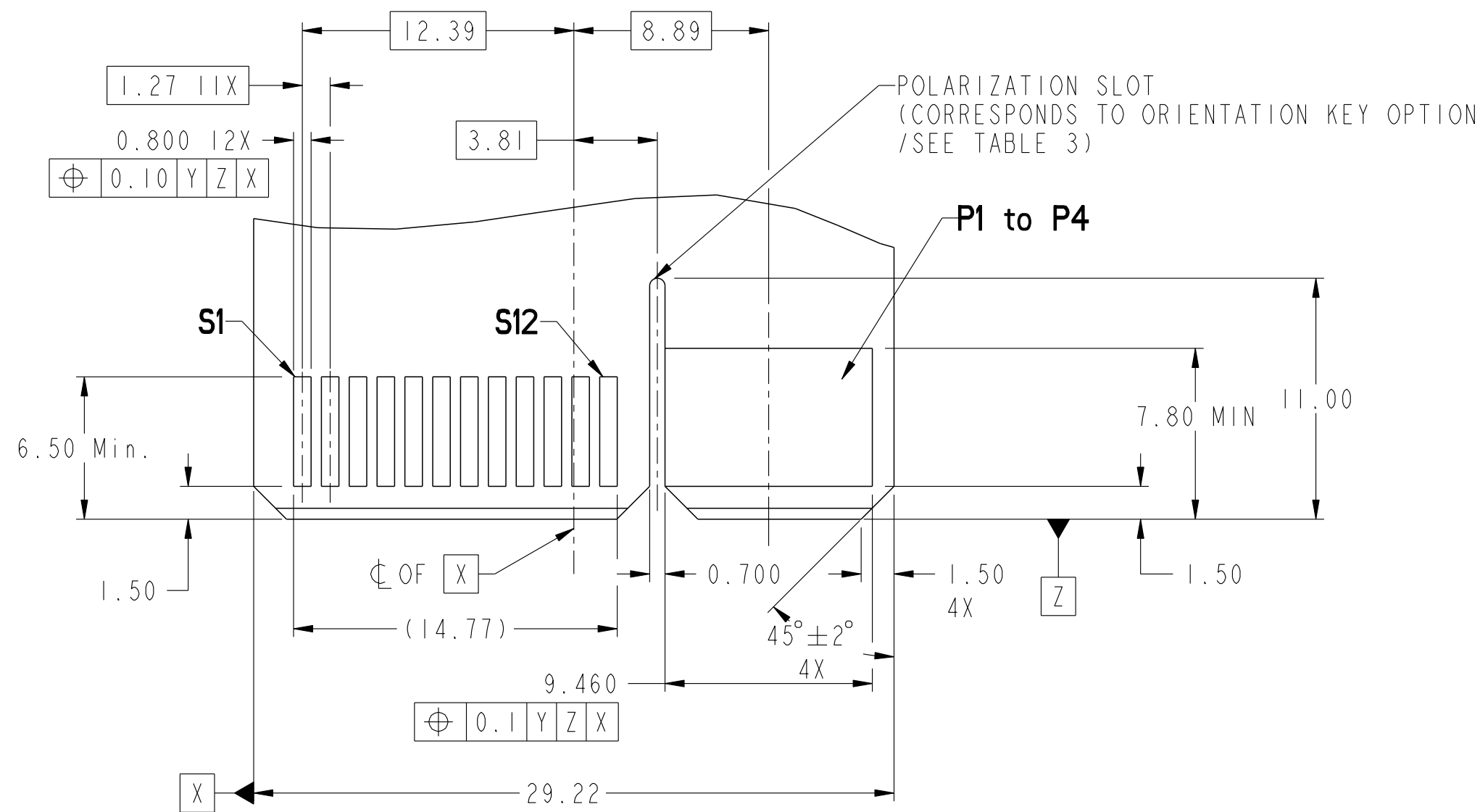
spec ref	-	dr	Wei-Long Zhang	2011/11/08	projection	MM	size	A2	scale	1:1		
tolerance std	ASME Y14.5	eng	Sunny2 Liu	2016/05/05			ecn no	ELX-DG-24036-1	rel level	Released		
TOLERANCES UNLESS OTHERWISE SPECIFIED		chr	Terris Liu	2016/05/20								
		appr	Pei-Ming Zheng	2016/05/24								
surface	linear	0.X	±0.3	Amphenol FCI	product family		VERT RECT (24S+8P) HIGH POWER CARD EDGE	cat. no.	Product - Customer Drw	sheet 2 of 4		
		0.XX	±0.10		dwg no	10119449					rev	B
	angular	0°	±2°		PDS: Rev :B STATUS:Released Printed: May 27, 2016							

Amphenol FCI

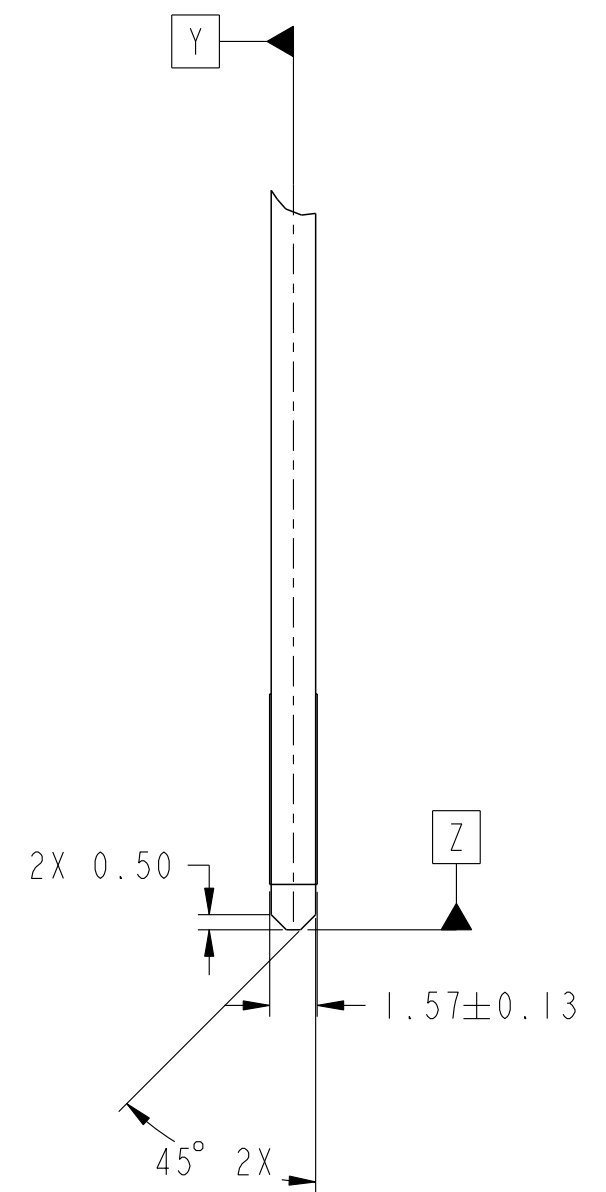
© 2016 AFCI

CONTACT TYPE	TOP LAYER DESCRIPTION	TABLE 1 (HPCE / SOLDER TAILS) PLATED THROUGH-HOLE REQUIREMENTS				
		DRILLED HOLE DIAMETER	COPPER THICKNESS	TIN-LEAD THICKNESS	TIN THICKNESS	FINISHED HOLE DIAMETER
POWER & SIGNAL	TIN-LEAD	1.10-1.16 (1.15 DRILL)	0.025 - 0.050	0.005 - 0.015	--	0.94 - 1.10
	IMMERSION TIN	1.10-1.16 (1.15 DRILL)	0.025 - 0.050	--	0.9 - 1.5um	0.94 - 1.10
	COPPER (SEE NOTE 8)	1.10-1.16 (1.15 DRILL)	0.025 - 0.050	--	--	0.94 - 1.10

CONTACT TYPE	TOP LAYER DESCRIPTION	TABLE 2 (HPCE / PRESS-FIT TAILS) PLATED THROUGH-HOLE REQUIREMENTS				
		DRILLED HOLE DIAMETER	COPPER THICKNESS	TIN-LEAD THICKNESS	TIN THICKNESS	FINISHED HOLE DIAMETER
POWER & SIGNAL	TIN-LEAD	0.81-0.86 (0.85 DRILL)	0.025 - 0.050	0.005 - 0.015	--	0.65 - 0.80
	IMMERSION TIN	0.81-0.86 (0.85 DRILL)	0.025 - 0.050	--	0.9 - 1.5um	0.70 - 0.80
	COPPER (SEE NOTE 8)	0.81-0.86 (0.85 DRILL)	0.025 - 0.050	--	--	0.70 - 0.80



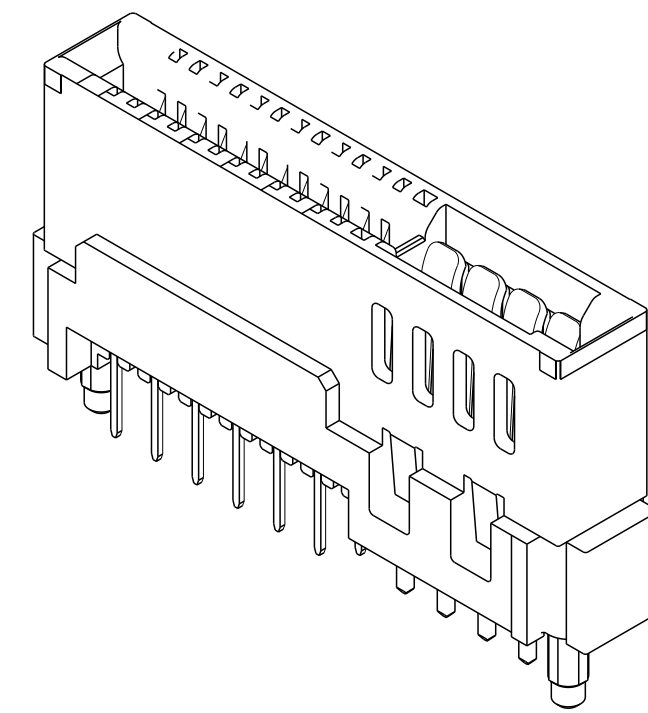
RECOMMENDED MATING BOARD FOOTPRINT



spec ref	-	dr	Wei-Long Zhang	2011/11/08	projection	MM	size	A2	scale	1:1
tolerance std	ASME Y14.5	eng	Sunny2 Liu	2016/05/05			ecn no	ELX-DG-24036-1	rel level	Released
TOLERANCES UNLESS OTHERWISE SPECIFIED		chr	Terris Liu	2016/05/20						
		appr	Pei-Ming Zheng	2016/05/24						
surface	ASME Y14.5	linear	0.X	±0.3			product family	VERT RECT (24S+8P)		cat. no. - Product - Customer Drw
		angular	0°	±2°	HIGH POWER CARD EDGE		dwg no	10119449		
sheet 3 of 4										

HPCE PART NUMBER (TABLE 3)

PART NUMBER	TAIL TYPE	ORIENTATION KEY	DIM "A" TYPICAL TAIL LENGTH	DIM "B" RECOMMENDED BOARD THICKNESS	SPECIFIED APPLICATION TOOL
10119449-001LF	SOLDER	YES	3.17 ±0.25	1.59 - 2.38	NO
10119449-002LF	SOLDER	NO			
10119449-003LF	PRESS-FIT	YES	3.17 ±0.25	1.57 MIN.	YES NOTE 11
10119449-004LF	PRESS-FIT	NO			



NOTES:

1. CONNECTOR MATERIALS:

HOUSING: HIGH TEMPERATURE THERMAL PLASTIC, BLACK
 UL 94V-0 COMPLIANT
 CONTACTS: HIGH PERFORMANCE COPPER ALLOY.

2. CONTACT FINISH REF. GS-12-604 SECTION 5.2.

3. PRODUCT SPECIFICATION: GS-12-604.

4. APPLICATION SPECIFICATION: GS-20-128.

5. PRODUCT MARKING ON HOUSING IN AREA SHOWN MEETS AFCI SPECIFICATION: GS-24-007.

6. PACKAGING MEETS FCI SPECIFICATION GS-14-937.

7. HOUSING COMPONENT WILL WITHSTAND EXPOSURE TO 260°C PEAK TEMPERATURE FOR 60 SECONDS IN A CONVECTION, INFRA-RED, OR VAPOR PHASE REFLOW OVEN.

8. COPPER PLATING THICKNESS IN CENTER OF VIA-HOLE CAN BE NO MORE THAN 0.003 LESS THAN OTHER AREAS.

9. ALL HOLE SIZES ARE FINISHED HOLE SIZES.

10. MOUNTING HOLES ARE UNPLATED
 ∅ 2.40 +/- 0.1 FOR PRESS-FIT TAILS
 ∅ 2.18 +/- 0.03 FOR SOLDER TAILS

11. APPLICATION TOOL DRAWING: 10119453.

12. A SYMBOL Δ WILL BE NEXT TO ANY DIMENSION, VIEW, OR NOTE WHICH HAS BEEN MODIFIED WITH THE CURRENT DRAWING REVISION.

spec ref	-	dr	Wei-Long Zhang	2011/11/08	projection	MM	size	A2	scale	4:1
tolerance std	-	eng	Sunny2 Liu	2016/05/05			ecn no	ELX-DG-24036-1	rel level	Released
ASME Y14.5	TOLERANCES UNLESS OTHERWISE SPECIFIED	chr	Terris Liu	2016/05/20						
surface	-	appr	Pei-Ming Zheng	2016/05/24						
ASME Y14.5	linear	0.X	±0.3		VERT RECT (24S+8P)		dwg no 10119449	rev B		
		0.XX	±0.10		HIGH POWER CARD EDGE					
		0.XXX	±0.050		cat. no.	-			Product - Customer Drw	sheet 4 of 4
	angular	0°	±2°	PDS: Rev :B		STATUS:Released		Printed: May 27, 2016		