



Quality Products. Service Excellence.

Type 4X Polycarbonate & General Purpose ABS Enclosures 1555 Series

Watertight, Styled Lid, UL Listed Options

Key Features



- Ideally suited for mounting printed circuit boards or DIN rail mounted components (see photo features below for details).
- “Styled” lid version has three main advantages over our flat lid (1554 series) - also see photo features below:
 - Smooth recessed surface on lid for a membrane keypad or label
 - Standoffs molded in the interior of the lid (except for size “B”). Designed for #6 self tapping screws
 - More modern “styled” look vs. our traditional flat lid (1554 series)
- ABS Versions are molded from general purpose material which carries a flammability rating of UL94-HB. For indoor use.
- Polycarbonate versions are UV stabilized for outdoor use. Gray polycarb carries a UL94-5VA rating.
- Polycarbonate versions are UL 508A listed (File # E65324).
- Enclosure color is a light gray (RAL 7035).
- Gasketed lid with two piece “tongue & groove” construction provides protection against access of oil, dust and water.
- Gasket is one piece made from high temperature, U.L. listed silicone.
- Designed to meet IP 66 & NEMA 4, 4X, 6, 6P, 12 & 13 ratings.
- Lid is secured with included M4 stainless steel machine screws which are threaded into integral stainless steel bushings for repetitive assembly & disassembly. All hardware is stainless steel to avoid corrosion caused by dissimilar metals.
- Lid screws are self capturing (lid holes are threaded with the first installation of lid screws).
- Internal features are maximized for mounting options and vary with size:
 - Internal DIN rail mounting tabs molded into most models, except sizes “C” and “D”.
 - Threaded (M3) integral brass inserts and/or standoffs (for #6 self tapping screws) for P.C. board or inner panel mounting in all but the smallest size (“B”).
 - Vertical P.C. card guides (for 1.5 mm thick P.C. boards) are molded in all but the smallest size (“B”).

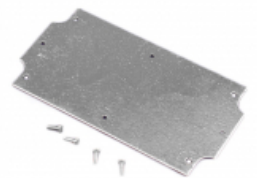
Photo Features



Styled lid offers a modern look and a smooth recess perfect for membrane keypads or labels



Standoffs molded in the interior of the lid (except for size “B”). Designed for #6 self tapping screws

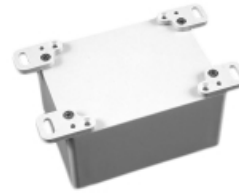
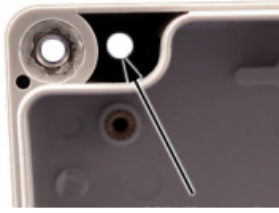


Galvanized steel inner panels are available (refer to table below).

Wall-mounting holes are located outside of the gasket channel

Same wall mounting holes can be used to install an accessory foot kit, **1554FT**

Internal mounting posts can be used to mount accessory inner panels, PC boards, or DIN rails (inner panel shown)



Accessories

- Pole Mount Kit
- Breather Kit
- Liquid-Tight, Strain Relief Cordgrips
- Pressure Compensation Plug
- Small Rainproof Ventilator

Part Numbers

| ABS Gray Lid | Polycarbonate (UL Listed) Gray Lid | Qty of Lid Screws | Length | Width | Total Height | Inner Panel | Foot Kit | Replacement Gasket | Replacement Lid Screws (50-pack) |
|-----------------|---------------------------------------|-------------------|--------|-------|--------------|-------------|----------|--------------------|-------------------------------------|
| 1555BGY | 1555B2GY | 4 | 2.60 | 2.60 | 1.60 | 1554BPL | 1554FT | 1554BGASKET | SC576-50 |
| 1555EGY | 1555E2GY | 4 | 3.50 | 3.50 | 2.40 | 1554EPL | 1554FT | 1554EGASKET | SC576-50 |
| 1555EEGY | 1555EE2GY | 4 | 3.50 | 3.50 | 3.50 | 1554EPL | 1554FT | 1554EGASKET | SC576-50 |
| 1555CGY | 1555C2GY | 4 | 4.70 | 2.60 | 1.60 | 1554CPL | 1554FT | 1554CGASKET | SC576-50 |
| 1555DGY | 1555D2GY | 4 | 4.70 | 2.60 | 2.40 | 1554CPL | 1554FT | 1554CGASKET | SC576-50 |
| 1555FGY | 1555F2GY | 4 | 4.70 | 3.50 | 2.40 | 1554FPL | 1554FT | 1554FGASKET | SC576-50 |
| 1555GGY | 1555G2GY | 4 | 4.70 | 3.50 | 3.15 | 1554FPL | 1554FT | 1554FGASKET | SC576-50 |
| 1555NGY | 1555N2GY | 4 | 4.70 | 4.70 | 2.40 | 1554NPL | 1554FT | 1554NGASKET | SC576-50 |
| 1555PGY | 1555P2GY | 4 | 4.70 | 4.70 | 3.50 | 1554NPL | 1554FT | 1554NGASKET | SC576-50 |
| 1555JGY | 1555J2GY | 4 | 6.30 | 3.50 | 2.40 | 1554JPL | 1554FT | 1554JGASKET | SC576-50 |
| 1555KGY | 1555K2GY | 4 | 6.30 | 3.50 | 3.50 | 1554JPL | 1554FT | 1554JGASKET | SC576-50 |
| 1555RGY | 1555R2GY | 4 | 6.30 | 6.30 | 2.40 | 1554RPL | 1554FT | 1554RGASKET | SC576-50 |
| 1555SGY | 1555S2GY | 4 | 6.30 | 6.30 | 3.50 | 1554RPL | 1554FT | 1554RGASKET | SC576-50 |
| 1555HGY | 1555H2GY | 4 | 7.10 | 4.70 | 2.40 | 1554HPL | 1554FT | 1554HGASKET | SC576-50 |
| 1555TGY | 1555T2GY | 4 | 7.10 | 4.70 | 3.50 | 1554HPL | 1554FT | 1554HGASKET | SC576-50 |
| 1555UGY | 1555U2GY | 4 | 7.90 | 4.70 | 3.50 | 1554UPL | 1554FT | 1554UGASKET | SC576-50 |
| 1555VGY | 1555V2GY | 4 | 9.40 | 6.30 | 3.50 | 1554VPL | 1554FT | 1554VGASKET | SC583-50 |
| 1555VAGY | 1555VA2GY | 6 | 9.40 | 6.30 | 3.50 | 1554VAPL | 1554FT | 1554VAGASKET | SC583-50 |
| 1555VBGY | 1555VB2GY | 6 | 9.40 | 6.30 | 4.70 | 1554VAPL | 1554FT | 1554VAGASKET | SC583-50 |

Data subject to change without notice

© 2018. Hammond Manufacturing Ltd. All rights reserved.