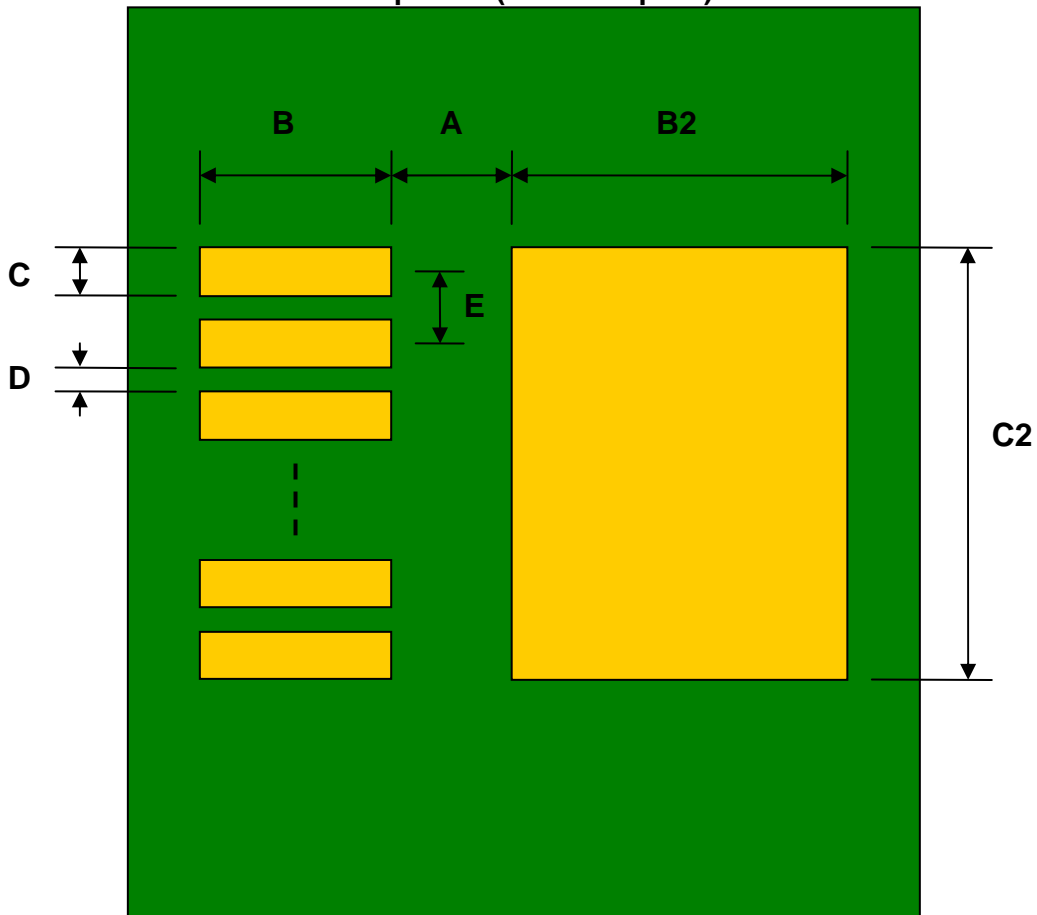


TO-252-5 to DIP-10 SMT Adapter (1.14 mm pitch, 6.5 x 6.2 mm body)

REF.	DIMENSIONS					
	mm			inches		
	MIN.	TYP.	MAX.	MIN.	TYP.	MAX.
A		1.825				
B		2.75				
C		0.80				
B2		7.00				
C2		6.00				
D		0.345				
E		1.145				
F					0.300	
G					0.100	
H					0.025	

Top View (SMT Footprint)



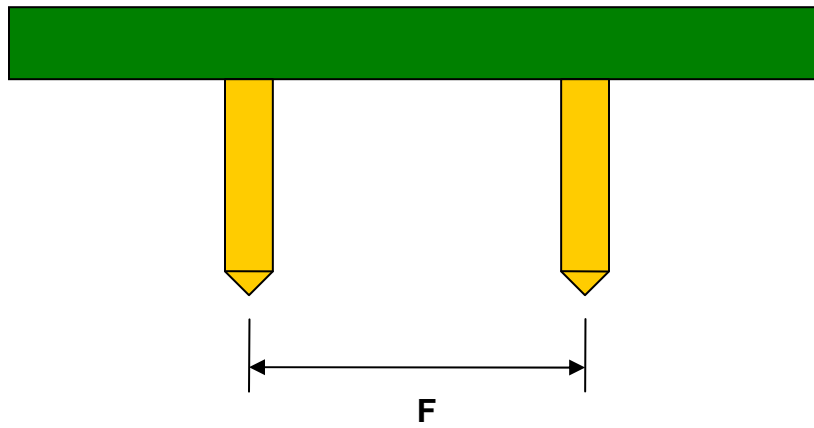
(Representative drawing only - not to scale)

Bottom View (DIP Pins)



(Representative drawing only - not to scale)

Side View (DIP Pins)



(Representative drawing only - not to scale)