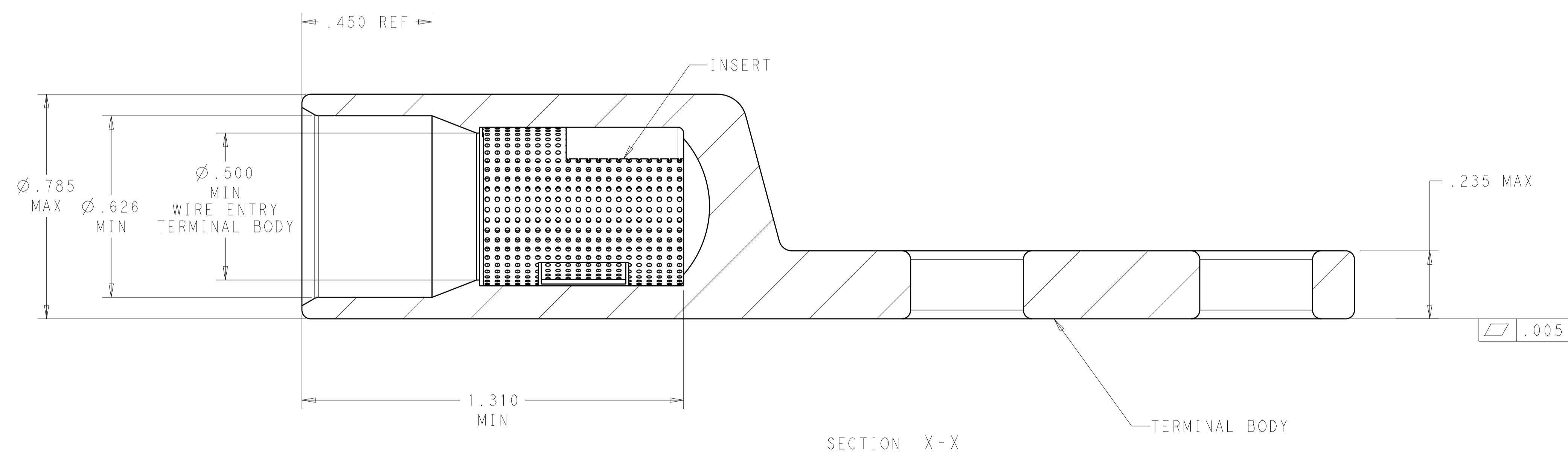
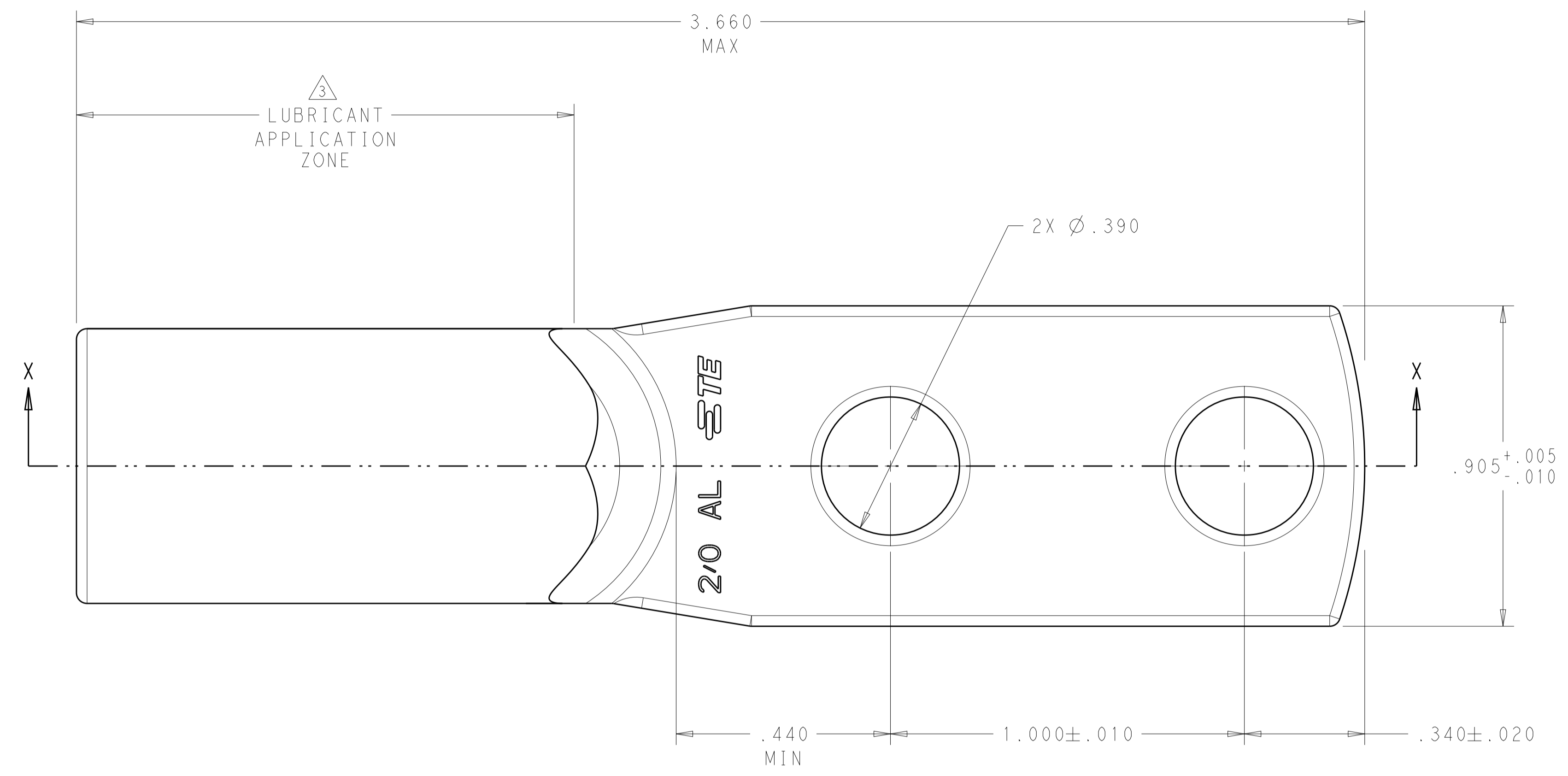
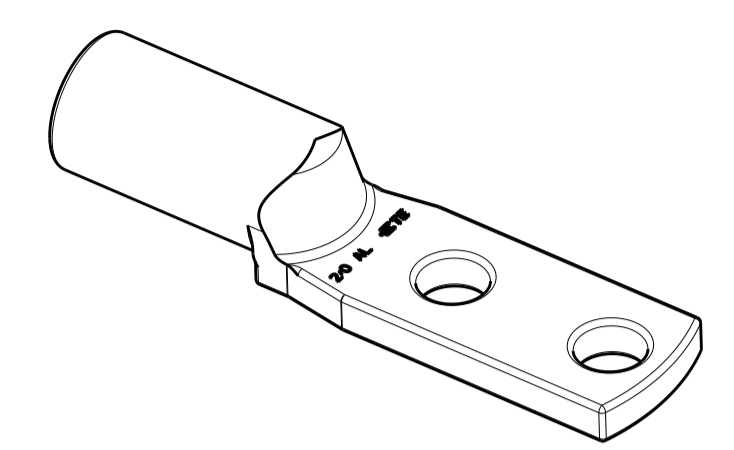


LOC	DIST	REV	DATE	BY	APVD
-	-	A	07APR2014	KAD	
-	-	B	06APR2015	DLB	KAD

- MATERIAL:
 BODY: ALUMINUM PER ASTM B317
 INSERT: BRASS PER ASTM B36
 - FINISH:
 BODY: .000600 MIN MATTE TIN PER ASTM B545
 OVER .000060 MIN NICKEL PER ASTM B733.
 INSERT: .000150 MIN MATTE NICKEL PER QQ-N-290
- ⚠ PTFE DRY LUBRICANT 360 DEGREE ON OUTER DIAMETER OF CRIMP BARREL IN ZONE SHOWN.



2102581-1
 PART NO.

THIS DRAWING IS A CONTROLLED DOCUMENT.		DWN: Brent D. Tolm CHK: K.A. DeBock APVD: K.A. DeBock	DATE: 07APR2014 NAME: K.A. DeBock	TE Connectivity
DIMENSIONS: IN	TOLERANCES UNLESS OTHERWISE SPECIFIED: 0 PLC ±. 1 PLC ±.1 2 PLC ±.01 3 PLC ±.005 4 PLC ±.0005 ANGLES ±1	PRODUCT SPEC: APPLICATION SPEC:	SIZE: A1 CAGE CODE: 100779 DRAWING NO: C=2102581	RESTRICTED TO:
MATERIAL: SEE CALL-OUT	FINISH: SEE CALL-OUT	WEIGHT: 36.03GRAMS	Customer Drawing	SCALE: 4:1 SHEET 1 OF 1 REV B