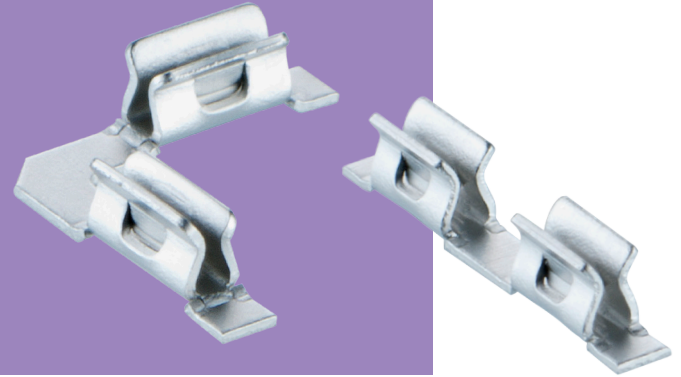


RFI Shield Clips

Shield Clips for EMI/RFI Shields

- Compatible with industry standard placement machines.
- Packaged in standard (EIA 481) Tape & Reel format.
- Spring contact design provides secure retention.
- Ideally suited to miniature electronics.
- Low profile and right angle clips offer design flexibility.



MINI	CORNER								
<p>Material: Stainless Steel Packaging: Tape & Reel; 5,000 on a ø300mm reel Shield thickness: 0.20 - 0.30mm Insertion Force: 19.6N max Withdrawal Force: 0.98N min</p> <p>Recommended PC Board Pattern</p> <table border="1"> <thead> <tr> <th>ORDER CODE</th> <th>FINISH</th> </tr> </thead> <tbody> <tr> <td>S0971-46R</td> <td>Tin (Pb)</td> </tr> </tbody> </table>	ORDER CODE	FINISH	S0971-46R	Tin (Pb)	<p>Material: Stainless Steel Packaging: Tape & Reel; 6,000 on a ø300mm reel Shield thickness: 0.20 - 0.25mm Insertion Force: 19.6N max Withdrawal Force: 0.98N min</p> <p>Recommended PC Board Pattern</p> <table border="1"> <thead> <tr> <th>ORDER CODE</th> <th>FINISH</th> </tr> </thead> <tbody> <tr> <td>S0981-46R</td> <td>Tin (Pb)</td> </tr> </tbody> </table>	ORDER CODE	FINISH	S0981-46R	Tin (Pb)
ORDER CODE	FINISH								
S0971-46R	Tin (Pb)								
ORDER CODE	FINISH								
S0981-46R	Tin (Pb)								
MICRO	MICRO								
<p>Material: Stainless Steel Packaging: Tape & Reel; 15,000 on a ø330mm reel Shield thickness: 0.20 - 0.25mm Insertion Force: 19.6N max Withdrawal Force: 0.98N min</p> <p>Recommended PC Board Pattern</p> <table border="1"> <thead> <tr> <th>ORDER CODE</th> <th>FINISH</th> </tr> </thead> <tbody> <tr> <td>S0991-46R</td> <td>Tin (Pb)</td> </tr> </tbody> </table>	ORDER CODE	FINISH	S0991-46R	Tin (Pb)	<p>Material: Stainless Steel Packaging: Tape & Reel; 20,000 on a ø330mm reel Shield thickness: 0.15 - 0.20mm Insertion Force: 19.6N max Withdrawal Force: 0.98N min</p> <p>Recommended PC Board Pattern</p> <table border="1"> <thead> <tr> <th>ORDER CODE</th> <th>FINISH</th> </tr> </thead> <tbody> <tr> <td>S1001-46R</td> <td>Tin (Pb)</td> </tr> </tbody> </table>	ORDER CODE	FINISH	S1001-46R	Tin (Pb)
ORDER CODE	FINISH								
S0991-46R	Tin (Pb)								
ORDER CODE	FINISH								
S1001-46R	Tin (Pb)								

All dimensions in mm.