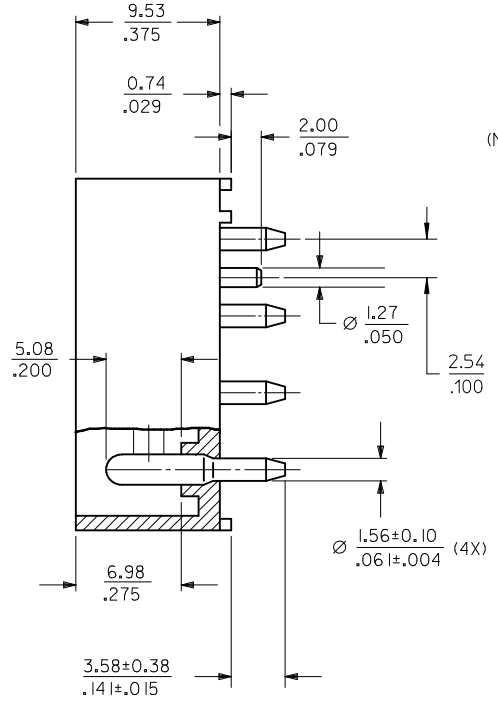
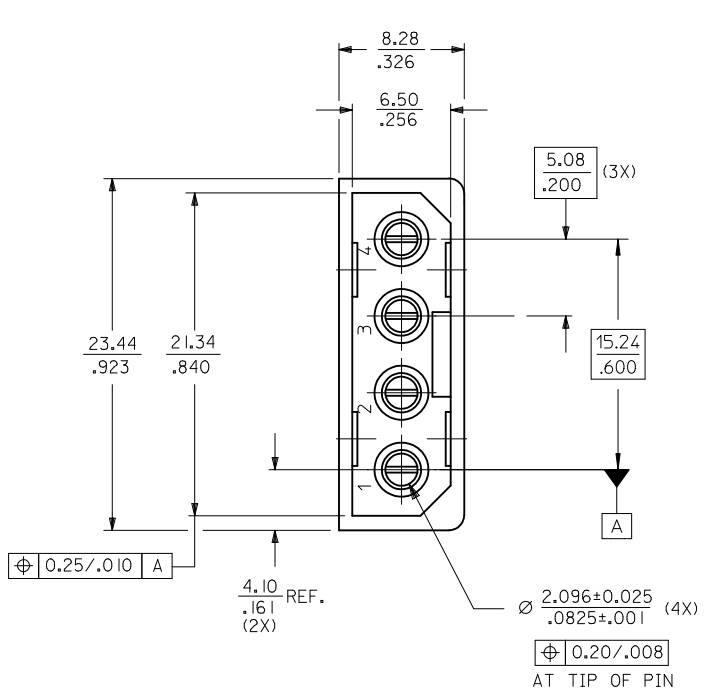
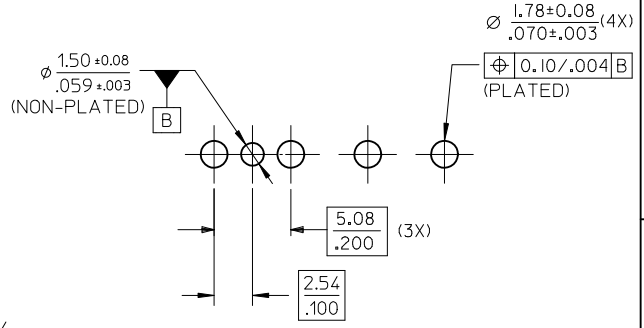


MAT'L NO.	ENG NO.
15-24-4744	A-8981-4V7-LF



RECOMMENDED PCB HOLE LAYOUT



- NOTES :
1. PLATING  
POSTPLATE 0.00254/.000100 MIN. TIN  
OVER 0.00127/.000050 MIN. NICKEL OVERALL.
  2. PART TO MATE WITH HOUSING 8981-4P2  
AND TERMINAL 8980-3\*.
  3. PRODUCT SPEC PS-8981-4V4/4R1-P APPLIES.
  4. MATERIAL:  
HOUSING - PCT, GLASS FILLED, UL94V-0  
COLOR BLACK  
TERMINAL - PHOS BRONZE

ADD PEG DIMENSION EC NO: S2010-0692 DRWN:SKANG CHKD:ATSEE APPR:MLONG 2010/02/11 2010/02/18 2010/02/19	QUALITY SYMBOLS	GENERAL TOLERANCES (UNLESS SPECIFIED)	DIMENSION STYLE	SCALE	DESIGN UNITS	THIRD ANGLE PROJECTION
	▽=0 ∇=0	mm INCH 4 PLACES ± --- ± --- 3 PLACES ± --- ± .008 2 PLACES ± 0.20 ± --- 1 PLACE ± --- ± --- ANGULAR ± 3 °	MM/IN	NTS	METRIC	
	DESCRIPTION	DRAWN BY	DATE	TITLE		
		SKTOH	1992/04/28	POWER CONNECTOR, 4 CKTS VERTICAL MOUNT		
	CHECKED BY	DATE	MATERIAL NO.			
	GWANG	1992/04/28	SD-8981-4V7			
	APPROVED BY	DATE	DOCUMENT NO.			
	MLONG	2010/02/18	SHEET NO.			
			1 OF 1			
D2	REV	DESCRIPTION	DRAFT WHERE APPLICABLE MUST REMAIN WITHIN DIMENSIONS			
			SIZE A3 THIS DRAWING CONTAINS INFORMATION THAT IS PROPRIETARY TO MOLEX INCORPORATED AND SHOULD NOT BE USED WITHOUT WRITTEN PERMISSION			