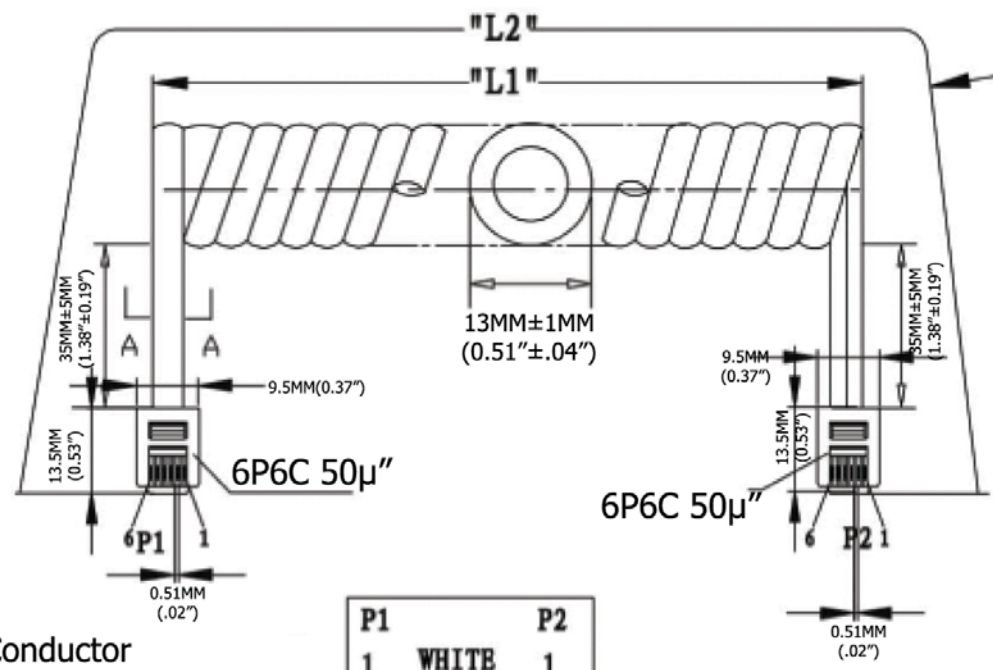
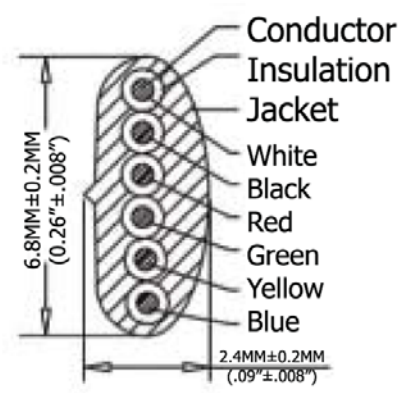


A
B
C
D
E
F
G
H

A
B
C
D
E
F
G
H



Extended length is with 500g of force



P1	P2
1	1
2	2
3	3
4	4
5	5
6	6

Extended Length ("L2")	Typical Retracted Length ("L1")
168.0 Inches - 193.2 Inches	53.5 Inches
4,267.2MM-4,907.28MM	1,358.9MM

- Material:**
- Plug Housing: Polycarbonate, clear
 - Plug Terminal: 0.36"[0.14MM] Thick Phosphor Bronze
 - Connector: 50µ" of Selective Gold Contact Plating
 - Area, Gold flash over the remainder
 - Over 2.54µm[.000100] thick nickel underplate
 - Conductor(X6C): 26AWG (0.12X12) Bare Copper
 - Insulation(X6C): PP6331 ID 0.95-1.0
 - Jacke: PVC No UL 80 P
 - Package: Individual PE Bag

SBC: A=A



Scale	1:1					Name	Item No.
TOLERANCE					Drawn	11.02.11	AT-C-26-6/6/S-14/R
X.X	±0.40				Approved	Chappell	
X.XX	±0.25						Title NON-UL 26 AWG (0.12X12)*6C, O.D.: 2.4*6.8MM, Reverse Plug, 50µ" of contact plating, SILVER
X.XXX	±0.15						Drawing No.
Angle	±3°						rev00
							Replace
							Sheet

