



COMPACT ENTERPRISE
CLASS 3G/4G/LTE
ROUTER



DIGI TRANSPORT® WR21

Compact, flexible, low-cost 3G/4G/LTE enterprise router for remote and mobile networking applications

Digi TransPort WR21 is a full-featured cellular router offering the flexibility to scale from basic connectivity applications to enterprise class routing and security solutions. With its high-performance architecture, Digi TransPort WR21 provides primary and backup WWAN connectivity over 3G/4G/LTE. The platform includes software selectable multi-carrier and regional LTE variants.

Flexible power and connectivity options, along with extended temperature ranges make Digi TransPort WR21 a versatile product for both commercial and industrial environments.

The Digi TransPort WR21 supports enterprise software features for advanced security (stateful firewall, MAC filtering, VPN), redundancy (VRRP+, SureLink®), and management (SNMP, event logging, analyzer trace, and QOS), enabling the product to be used in PCI or NERC-CIP compliant applications.

Digi management solutions provide easy setup, configuration and maintenance of large installations of remote Digi TransPort devices. Digi Remote Manager® offers web-based device management for remote Digi cellular routers, gateways and third-party devices.

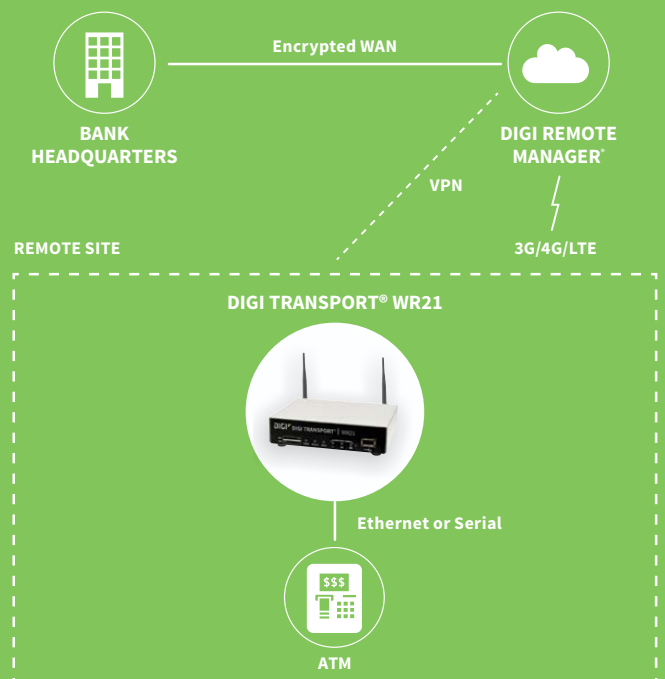
BENEFITS

- Compact, low-cost, flexible cellular routing platform with enterprise feature set
- Enterprise software with advanced routing protocols, VPN, and stateful firewall
- High-performance architecture, flexible power and extended operating temperature
- 3G/4G cellular interface supporting LTE and HSPA+ networks worldwide
- Dual SIMs and Digi SureLink™ provide redundant connection
- Digi Remote Manager software for easy setup, configuration, and maintenances

RELATED PRODUCTS



APPLICATION EXAMPLE



SPECIFICATIONS

Digi TransPort® WR21

WIRELESS INTERFACES

CELLULAR*

| | |
|--------------------------|---|
| LTE - NORTH AMERICA (M5) | LTE CAT 4: 700(B12,13)/850(B5)/AWS(B4)/1900(B2) 3G HSPA+: 850/1900 MHz Transfer rate (max): 150 Mbps down, 50 Mbps up Approvals: PTCRB, AT&T, Telus (pending) |
| LTE - EMEA/APAC (M7) | LTE CAT 4: 800(B20)/900(B8)/1800(B3)/2100(B1)/2600(B7) HSPA: 900/2100 MHz EDGE: 900/1800 MHz Transfer rate (max): 150 Mbps down, 50 Mbps up Approvals: Vodafone (pending) |
| LTE 450 - EMEA/APAC (M2) | LTE CAT 3: 450(B31)/800(B20)/1800(B3)/2600 (B7) HSPA+: 900/2100 MHz EDGE: 900/1800 MHz Transfer rate (max): 100 Mbps down, 50 Mbps up |
| GLOBAL HSPA+ (U9) | 3G HSPA+: 850/900/1700AWS/1900/2100 MHz 2G EDGE/GPRS: 850/900/1800/1900 MHz Transfer rate (max): 21 Mbps down, 5.76 Mbps up Approvals: PTCRB, Vodafone |
| EMEA CDMA EV-DO (D5) | 3G EVDO Rev B: 450 MHz 2G 1XRTT: 450 MHz Transfer rate (max): 14.7Mbps down, 5.4Mbps up |
| GSM-R (R5) | 900/1800/1900 MHz (TRM-5); GPRS Class 10; Transfer rate (max): 42.8 Kbps up, 85.6 Kbps down |
| CONNECTORS | (2) 50 Ω SMA (center pin: female) |
| SIM SLOTS | (2) Mini-SIM (2FF) |
| SIM SECURITY | Optional SIM slot cover plate |

GPS**

| | |
|---------------------|---|
| CHANNELS | 12 channel, continuous tracking |
| SENSITIVITY | Tracking1: -161 dBm; Acquisition2 (Assisted, non-LTE): -158 dBm; Acquisition (Assisted, LTE): -153 dBm; Acquisition (Standalone): -145 dBm |
| PROTOCOL | NMEA 0183 V3.0 |
| COLD START | < 0.2 m/s |
| HORIZONTAL ACCURACY | < 2 m (50%); < 5 m (90%) |
| VELOCITY ACCURACY | < 0.2 m/s |

OTHER

| | |
|---------------------|--|
| ADDITIONAL FEATURES | Send GPS via UDP/IP, TCP/IP (up to two destinations) or serial; Customize and/or send data using Python; GPS status query; Time source capable |
|---------------------|--|

WIRED INTERFACES

SERIAL

| | |
|----------------|---|
| PORTS | (1) DB-9; DCE |
| DTE/DCE | DCE |
| SIGNAL SUPPORT | TXD, RXD, RTS, CTS, DTR, DCD, DSR, RI |
| FLOW CONTROL | Software (XON/XOFF), hardware supported |

ETHERNET

| | |
|-------|---------------------------------------|
| PORTS | (2) RJ-45; 10/100 Mbps (auto-sensing) |
|-------|---------------------------------------|

USB

| | |
|-------|--------------------|
| PORTS | (1) USB 2.0 Type A |
|-------|--------------------|

* Transfer rates are theoretical and network operator dependent.

** Optional hardware.

SPECIFICATIONS

Digi TransPort® WR21

| MANAGEMENT | |
|--------------------------------------|---|
| REMOTE MANAGEMENT | Digi Remote Manager (cloud based); SNMP v1/v2c/v3 (user installed/managed) |
| LOCAL MANAGEMENT | Web interface (HTTP/HTTPS); CLI (Telnet, SSH, SMS, Serial Port) |
| MANAGEMENT/ TROUBLESHOOTING TOOLS | FTP, SFTP, SCP; Protocol analyzer with PCAP for Wireshark; Event logging with Syslog and SMTP; NTP/SNTP |
| MEMORY | 128 MB NAND Flash/128 MB DDR2 SDRAM |
| POWER | |
| INPUT | 9 – 30 VDC, 18W min power source required |
| CONSUMPTION | 4W typical (Idle); 12W typical (Peak Tx/Rx) |
| CONNECTOR | Depending on model: Locking barrel or screw-down removeable terminal block |
| PHYSICAL | |
| DIMENSIONS (L X W X H) | 3.9 in x 5.2 in x 1.3 in (100 mm x 131 mm x 32 mm) |
| WEIGHT | 1.08 lb (0.49 kg) |
| STATUS LEDS | Power, Service, WWAN, 3x signal strength |
| ENCLOSURE MATERIAL/RATING | Industrial (Metal)/ IP30 |
| MOUNTING | Brackets for wall mount & DIN rail sold separately |
| ENVIRONMENTAL | |
| OPERATING TEMPERATURE*** | -35° C to +70° C (Reduced cellular performance may occur above +50° C) |
| STORAGE TEMPERATURE | -40° C to +85° C |
| RELATIVE HUMIDITY | 0% to 95% (non-condensing) @ 25° C |
| ETHERNET ISOLATION | 1.5 kV RMS |
| SERIAL PORT PROTECTION (ESD) | 15 kV |
| HAZARDOUS (CLASS 1 DIV 2) | Models with Serial (RS-232/422/485) compliant to ANSI/ISA-12.12.01-2015 |
| APPROVALS | |
| CELLULAR | PTCRB, NAPRD.03, GCF-CC, R&TTE, EN 301 511 |
| SAFETY | UL 60950, CSA 22.2 No. 60950, EN60950 |
| EMISSIONS/IMMUNITY | CE, FCC Part 15 Class B, AS/NZS CISPR 22, EN55024, EN55022 Class B |
| WARRANTY | |
| PRODUCT WARRANTY | 5 years |

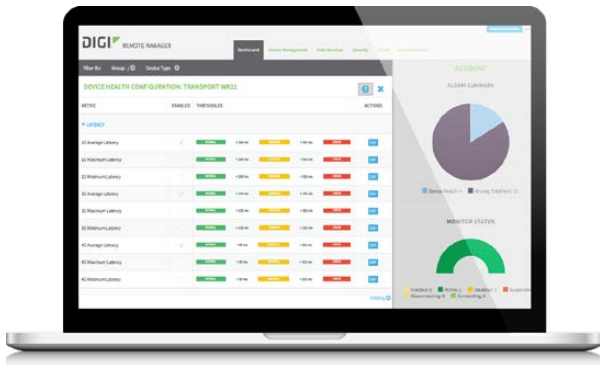
ENTERPRISE SOFTWARE

DESCRIPTION

| | |
|------------------|---|
| PROTOCOLS | HTTP, HTTPS, FTP, SFTP, SSL, SMTP, SNMP (v1/v2c/v3), SSH, Telnet and CLI for web management; Remote management via Digi Remote Manager; SMS management, protocol analyzer, ability to capture PCAP for use with Wireshark; DynDNS; Dynamic DNS client compatible with BIND9/No-IP/DynDNS |
| SECURITY/VPN | Stateful inspection firewall with scripting, address and port translation; VPN: IPSec with IKEv1, IKEv2, NAT Traversal; SSL, SSLv2, FIPS 197, open VPN client and server; PPTP, L2TP; (5) VPN tunnels (upgradable to a maximum of 50); Maximum VPN tunnels available: 5; Cryptology: SHA-1, MD5, RSA; Encryption: DES, 3DES and AES up to 256-bit (CBC mode for IPsec); Authentication: RADIUS, TACACS+, SCEP for X.509 certificates; Content filtering (via 3rd party); MAC address filtering; VLAN support; Ethernet port isolation |
| ROUTING/FAILOVER | IP pass-through; NAT, NAPT with IP port forwarding; Ethernet bridging; GRE; Multicast routing; Routing protocols: PPP, PPPoE, RIP (v1, v2) OSPF, SRI, BGP, iGMP routing (multicast); RSTP (Rapid Spanning Tree Protocol); IP failover: VRRP, VRRP+TM; Automatic failover/failback to second GSM network/standby APN; Verizon NEMO/DMNR for primary wireless access |
| OTHER PROTOCOLS | DHCP; Dynamic DNS client compatible with BIND9/No-IP/DynDNS; QoS via TOS/DSCP/WRED; Modbus UDP/TCP to serial; X.25 including XOT, SNA/IP, TPAD and PAD; Protocol switch; Modbus bridging for connecting diverse field assets |

*** Standard temperature power supplies may reduce temperature range.

DIGI REMOTE MANAGER®



CAPABILITIES

- Centralized management of remote devices over 3G/4G/LTE
- Define standard configurations and automatically monitor individual devices for PCI security compliance
- Report and alert on performance statistics, including connection history, signal quality, latency, data usage and packet loss
- No servers or applications to operate and maintain
- Complete tasks for your entire device network in minutes
- Edit configurations and update firmware for your individual devices or groups
- Monitor the status and location of your remote device via a web browser
- Active or deactivate cellular lines and monitor data to ensure you never incur overage charges

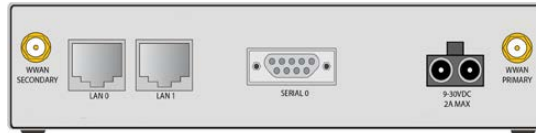
INFRASTRUCTURE

- Hosted in a commercial-grade SAS 70-certified environment
- Superior availability, operating to 99.9% or greater
- Open APIs available to support application development

SECURITY

- Certified SSAE-16 and ISO27001 facilities
- Over 175 Security Controls in place to protect your data
- Enables compliance with security frameworks like PCI, HIPAA, NIST and more
- Earned SkyHigh's Cloud Trust Program highest ranking of Enterprise-Ready

PRODUCT IMAGES



| PART NUMBERS | DIGI TRANSPORT WR21 |
|------------------|--|
| WR21-M52B-DE1-SB | 4G LTE North America, RS-232, antennas and power supply not included |
| WR21-M72B-DE1-SB | 4G LTE EMEA/APAC, RS-232, antennas and power supply not included |
| WR21-M22B-DE1-SB | 4G LTE EMEA/APAC (450MHz), RS-232, antennas and power supply not included |
| WR21-U92B-DE1-SB | HSPA+ Global, RS-232, antennas and power supply not included |
| WR21-D52A-DE1-TA | CDMA 450MHz, RS-232/422/485, Class 1 Division 2 (C1D2), antennas included, power supply not included |
| WR21-R32A-DE1-TB | GSM-R, RS-232/422/485, Class 1 Division 2 (C1D2), antennas and power supply not included |

| PART NUMBERS | ACCESSORIES* |
|--------------|--|
| 76002059 | Accessory Kit DC - Includes DC power cable, ethernet cable and antennas (2) |
| 76002060 | Accessory Kit AC Std Temp - Includes AC/DC power supply (0° C to 40° C), ethernet cable and antennas (2) |
| 76002061 | Accessory Kit AC Extd Temp - Includes AC/DC power supply (-30° C to +70° C), ethernet cable and antennas (2) |

*Sold separately, unless otherwise noted.

DIGI SERVICE AND SUPPORT / You can purchase with confidence knowing that Digi is always available to serve you with expert technical support and our industry leading warranty. For detailed information visit www.digi.com/support.

© 1996-2018 Digi International Inc. All rights reserved.
All trademarks are the property of their respective owners.

91001738
C11/1217

DIGI INTERNATIONAL WORLDWIDE HQ
877-912-3444 / 952-912-3444 / www.digi.com

DIGI INTERNATIONAL GERMANY
+49-89-540-428-0

DIGI INTERNATIONAL JAPAN
+81-3-5428-0261 / www.digi-intl.co.jp

DIGI INTERNATIONAL SINGAPORE
+65-6213-5380

DIGI INTERNATIONAL CHINA
+86-21-50492199 / www.digi.com.cn

