

Flush-type connector - SACC-SQ-M12FS-8CON-25F/0,5 - 1441574

Please be informed that the data shown in this PDF Document is generated from our Online Catalog. Please find the complete data in the user's documentation. Our General Terms of Use for Downloads are valid (<http://download.phoenixcontact.com>)



Sensor/actuator flush-type socket, 8-pos., M12, A-coded, front/square flange mounting, with 0.5 m TPE litz wire, 8 x 0.25 mm²

Product Features

- 4 x fixing hole, 2.7 mm
- With form seal for M2.5 screws



Key commercial data

| | |
|----------------------|----------|
| Packing unit | 1 1 |
| Custom tariff number | 85444290 |
| Country of origin | Germany |

Technical data

Dimensions

| | |
|-----------------|-------|
| Length of cable | 0.5 m |
|-----------------|-------|

Ambient conditions

| | |
|---------------------------------|----------------------------------|
| Ambient temperature (operation) | -25 °C ... 85 °C (Plug / socket) |
| Degree of protection | IP67 |

General

| | |
|-----------------------|-------------------------------|
| Rated current at 40°C | 2 A |
| Rated voltage | 30 V |
| Number of positions | 8 |
| Contact resistance | ≤ 3 mΩ |
| Insulation resistance | ≥ 100 MΩ |
| Coding | A - standard |
| Standards/regulations | M12 connector IEC 61076-2-101 |

Flush-type connector - SACC-SQ-M12FS-8CON-25F/0,5 - 1441574

Technical data

General

| | |
|------------------------|------------------------------|
| Status display | No |
| Surge voltage category | II |
| Pollution degree | 3 |
| Connection method | Individual wires |
| Mounting type | Front mounting Square flange |

Material

| | |
|-----------------------------------------|------------------------------|
| Inflammability class according to UL 94 | V0 |
| Contact material | CuZn |
| Contact surface material | Ni/Au |
| Contact carrier material | PA 66 |
| Material, knurls | Zinc die-cast, nickel-plated |
| Sealing material | NBR |

Cable

| | |
|---------------------------------|----------------------------------------------------|
| Cable type | TPE litz wire |
| Conductor cross section | 0.25 mm ² |
| AWG signal line | 24 |
| Wire colors | Brown, blue, white, gray, pink, green, yellow, red |
| Conductor material | Tin-plated Cu litz wires |
| Ambient temperature (operation) | -25 °C ... 90 °C (cable, fixed installation) |

Classifications

eCl@ss

| | |
|------------|----------|
| eCl@ss 4.0 | 27140815 |
| eCl@ss 4.1 | 27140815 |
| eCl@ss 5.0 | 27143423 |
| eCl@ss 5.1 | 27143423 |
| eCl@ss 6.0 | 27279220 |
| eCl@ss 7.0 | 27440103 |
| eCl@ss 8.0 | 27440103 |

ETIM

| | |
|----------|----------|
| ETIM 2.0 | EC001297 |
| ETIM 3.0 | EC002061 |
| ETIM 4.0 | EC002061 |
| ETIM 5.0 | EC002061 |

Flush-type connector - SACC-SQ-M12FS-8CON-25F/0,5 - 1441574

Classifications

UNSPSC

| | |
|---------------|----------|
| UNSPSC 6.01 | 31251501 |
| UNSPSC 7.0901 | 31251501 |
| UNSPSC 11 | 31251501 |
| UNSPSC 12.01 | 31251501 |
| UNSPSC 13.2 | 39121413 |

Approvals

Approvals


Approvals


UL Recognized / GOST / GOST

Ex Approvals

Approvals submitted

Approval details

| | |
|---------------------------------------------------------------------------------------------------|-------|
| UL Recognized  | |
| mm ² /AWG/kcmil | 26-20 |
| Nominal current I _N | 2 A |
| Nominal voltage U _N | 30 V |

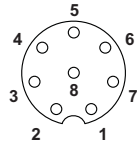
| |
|------------------------------------------------------------------------------------------|
| GOST  |
|------------------------------------------------------------------------------------------|

| |
|------------------------------------------------------------------------------------------|
| GOST  |
|------------------------------------------------------------------------------------------|

Drawings

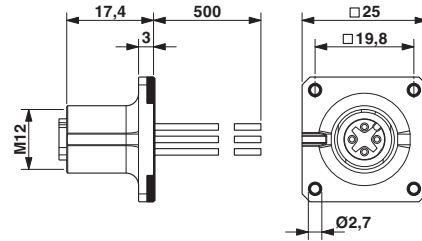
Flush-type connector - SACC-SQ-M12FS-8CON-25F/0,5 - 1441574

Schematic diagram

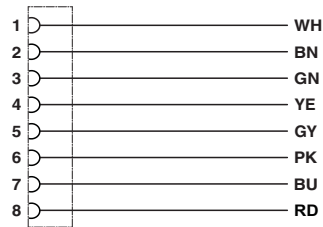


Pin assignment M12 socket, 8-pos., A-coded, view female side

Dimensioned drawing



Circuit diagram



Contact assignment of the M12 plug and the M12 socket