

Insulated Gate Bipolar Transistor (Trench IGBT), 175 A


SOT-227

PRODUCT SUMMARY	
V_{CES}	1200 V
$I_{C(DC)}$	175 A at 90 °C ⁽¹⁾
$V_{CE(on)}$ typical at 100 A, 25 °C	1.73 V
$I_{F(DC)}$	32 A at 90 °C
Speed	8 kHz to 30 kHz
Package	SOT-227
Circuit	Single switch diode

Note

⁽¹⁾ Maximum collector current admitted is 100 A, to not exceed the maximum temperature of terminals

FEATURES

- Trench IGBT technology with positive temperature coefficient
- Square RBSOA
- 10 μ s short circuit capability
- HEXFRED® antiparallel diodes with ultrasoft reverse recovery
- T_J maximum = 150 °C
- Fully isolated package
- Very low internal inductance (≤ 5 nH typical)
- Industry standard outline
- UL approved file E78996
- Material categorization: for definitions of compliance please see www.vishay.com/doc?99912


**RoHS
COMPLIANT**
BENEFITS

- Designed for increased operating efficiency in power conversion: UPS, SMPS, welding, induction heating
- Easy to assemble and parallel
- Direct mounting to heatsink
- Plug-in compatible with other SOT-227 packages
- Very low $V_{CE(on)}$
- Low EMI, requires less snubbing

ABSOLUTE MAXIMUM RATINGS				
PARAMETER	SYMBOL	TEST CONDITIONS	MAX.	UNITS
Collector to emitter voltage	V_{CES}		1200	V
Continuous collector current	I_C ⁽¹⁾	$T_C = 25$ °C	288	A
		$T_C = 90$ °C	175	
Pulsed collector current	I_{CM}		450	
Clamped inductive load current	I_{LM}		450	
Diode continuous forward current	I_F	$T_C = 25$ °C	54	
		$T_C = 90$ °C	32	
Gate to emitter voltage	V_{GE}		± 20	V
Power dissipation, IGBT	P_D	$T_C = 25$ °C	1087	W
		$T_C = 90$ °C	522	
Power dissipation, diode	P_D	$T_C = 25$ °C	219	
		$T_C = 90$ °C	105	
Isolation voltage	V_{ISOL}	Any terminal to case, $t = 1$ min	2500	V

Note

⁽¹⁾ Maximum collector current admitted is 100 A, to do not exceed the maximum temperature of terminals



ELECTRICAL SPECIFICATIONS ($T_J = 25\text{ }^\circ\text{C}$ unless otherwise specified)							
PARAMETER	SYMBOL	TEST CONDITIONS	MIN.	TYP.	MAX.	UNITS	
Collector to emitter breakdown voltage	$V_{BR(CES)}$	$V_{GE} = 0\text{ V}, I_C = 250\text{ }\mu\text{A}$	1200	-	-	V	
Collector to emitter voltage	$V_{CE(on)}$	$V_{GE} = 15\text{ V}, I_C = 100\text{ A}$	-	1.73	2.1		
		$V_{GE} = 15\text{ V}, I_C = 100\text{ A}, T_J = 125\text{ }^\circ\text{C}$	-	1.98	2.2		
		$V_{GE} = 15\text{ V}, I_C = 100\text{ A}, T_J = 150\text{ }^\circ\text{C}$	-	2.05	-		
Gate threshold voltage	$V_{GE(th)}$	$V_{CE} = V_{GE}, I_C = 250\text{ }\mu\text{A}$	-	5	-		
		$V_{CE} = V_{GE}, I_C = 7.5\text{ mA}$	4.9	5.9	7.9		
		$V_{CE} = V_{GE}, I_C = 250\text{ }\mu\text{A}, T_J = 125\text{ }^\circ\text{C}$	-	2.9	-		
Temperature coefficient of threshold voltage	$\Delta V_{GE(th)}/\Delta T_J$	$V_{CE} = V_{GE}, I_C = 1\text{ mA}$ ($25\text{ }^\circ\text{C}$ to $125\text{ }^\circ\text{C}$)	-	-17.6	-		mV/ $^\circ\text{C}$
Collector to emitter leakage current	I_{CES}	$V_{GE} = 0\text{ V}, V_{CE} = 1200\text{ V}$	-	0.9	100		μA
		$V_{GE} = 0\text{ V}, V_{CE} = 1200\text{ V}, T_J = 125\text{ }^\circ\text{C}$	-	0.85	10		mA
		$V_{GE} = 0\text{ V}, V_{CE} = 1200\text{ V}, T_J = 150\text{ }^\circ\text{C}$	-	4	20		
Forward voltage drop, diode	V_{FM}	$I_F = 40\text{ A}, V_{GE} = 0\text{ V}$	-	3.12	3.44	V	
		$I_F = 40\text{ A}, V_{GE} = 0\text{ V}, T_J = 125\text{ }^\circ\text{C}$	-	3.15	3.47		
		$I_F = 40\text{ A}, V_{GE} = 0\text{ V}, T_J = 150\text{ }^\circ\text{C}$	-	3.25	-		
Gate to emitter leakage current	I_{GES}	$V_{GE} = \pm 20\text{ V}$	-	-	± 200	nA	

SWITCHING CHARACTERISTICS ($T_J = 25\text{ }^\circ\text{C}$ unless otherwise specified)								
PARAMETER	SYMBOL	TEST CONDITIONS	MIN.	TYP.	MAX.	UNITS		
Total gate charge (turn-on)	Q_g	$I_C = 150\text{ A}$ ($t_p < 400\text{ }\mu\text{s}, D < 2\%$), $V_{CC} = 600\text{ V}, V_{GE} = 15\text{ V}$	-	830	-	nC		
Gate to emitter charge (turn-on)	Q_{ge}		-	180	-			
Gate to collector charge (turn-on)	Q_{gc}		-	380	-			
Turn-on switching loss	E_{on}	$I_C = 100\text{ A}, V_{CC} = 720\text{ V},$ $V_{GE} = 15\text{ V}, R_g = 2.2\text{ }\Omega,$ $L = 500\text{ }\mu\text{H}, T_J = 25\text{ }^\circ\text{C}$	-	4.8	-	mJ		
Turn-off switching loss	E_{off}		-	7.0	-			
Total switching loss	E_{tot}		-	11.8	-			
Turn-on delay time	$t_{d(on)}$		Energy losses include tail and diode recovery Diode used HFA16PB120	-	274	-	ns	
Rise time	t_r			-	67	-		
Turn-off delay time	$t_{d(off)}$			-	271	-		
Fall time	t_f			-	177	-		
Turn-on switching loss	E_{on}			$I_C = 100\text{ A}, V_{CC} = 720\text{ V},$ $V_{GE} = 15\text{ V}, R_g = 2.2\text{ }\Omega,$ $L = 500\text{ }\mu\text{H}, T_J = 125\text{ }^\circ\text{C}$	-	6.0	-	mJ
Turn-off switching loss	E_{off}				-	10.4	-	
Total switching loss	E_{tot}				-	16.4	-	
Turn-on delay time	$t_{d(on)}$	-			285	-	ns	
Rise time	t_r	-			75	-		
Turn-off delay time	$t_{d(off)}$	-			306	-		
Fall time	t_f	-	244	-				
Reverse bias safe operating area	RBSOA	$T_J = 150\text{ }^\circ\text{C}, I_C = 450\text{ A}, R_g = 4.7\text{ }\Omega,$ $V_{GE} = 15\text{ V}$ to $0\text{ V}, V_{CC} = 600\text{ V},$ $V_P = 1200\text{ V}, L = 500\text{ }\mu\text{H}$	Fullsquare					
Diode reverse recovery time	t_{rr}	$I_F = 50\text{ A}, dI_F/dt = 200\text{ A}/\mu\text{s}, V_R = 400\text{ V}$	-	164	-	ns		
Diode peak reverse current	I_{rr}		-	12	-	A		
Diode recovery charge	Q_{rr}		-	994	-	nC		
Diode reverse recovery time	t_{rr}	$I_F = 50\text{ A}, dI_F/dt = 200\text{ A}/\mu\text{s},$ $V_R = 400\text{ V}, T_J = 125\text{ }^\circ\text{C}$	-	230	-	ns		
Diode peak reverse current	I_{rr}		-	16.5	-	A		
Diode recovery charge	Q_{rr}		-	1864	-	nC		
Short circuit safe operating area	SCSOA	$T_J = 150\text{ }^\circ\text{C}, R_g = 22\text{ }\Omega,$ $V_{GE} = 15\text{ V}$ to $0\text{ V}, V_{CC} = 900\text{ V},$ $V_P = 1200\text{ V}$	10			μs		



THERMAL AND MECHANICAL SPECIFICATIONS						
PARAMETER	SYMBOL	TEST CONDITIONS	MIN.	TYP.	MAX.	UNITS
Junction and storage temperature range	T_J, T_{Stg}		-40	-	150	°C
Junction to case	IGBT		-	-	0.115	°C/W
	Diode		-	-	0.57	
Case to heatsink	R_{thCS}	Flat, greased surface	-	0.05	-	
Weight			-	30	-	g
Mounting torque		Torque to terminal	-	-	1.1 (9.7)	Nm (lbf.in)
		Torque to heatsink	-	-	1.3 (11.5)	Nm (lbf.in)
Case style		SOT-227				

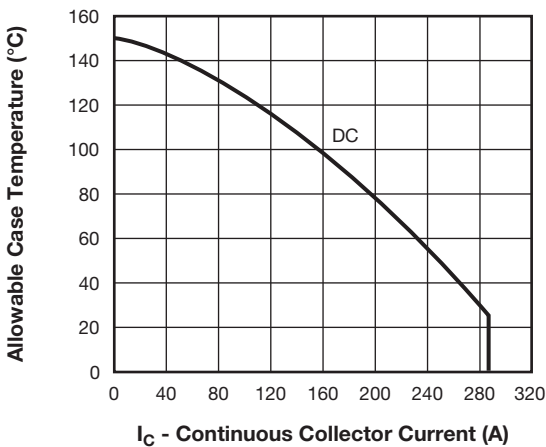


Fig. 1 - Maximum DC IGBT Collector Current vs. Case Temperature

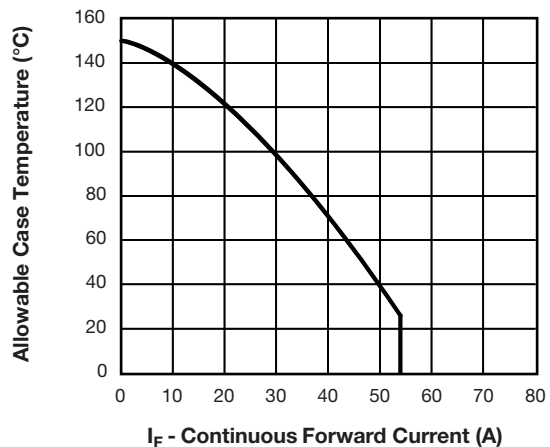


Fig. 3 - Maximum Allowable Forward Current vs. Case Temperature Diode Leg

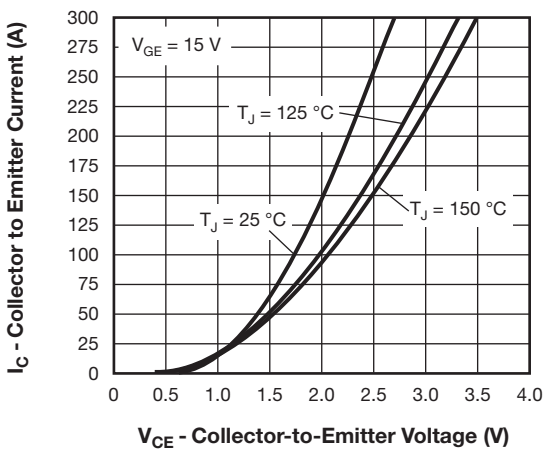


Fig. 2 - Typical Collector to Emitter Current Output Characteristics of IGBT

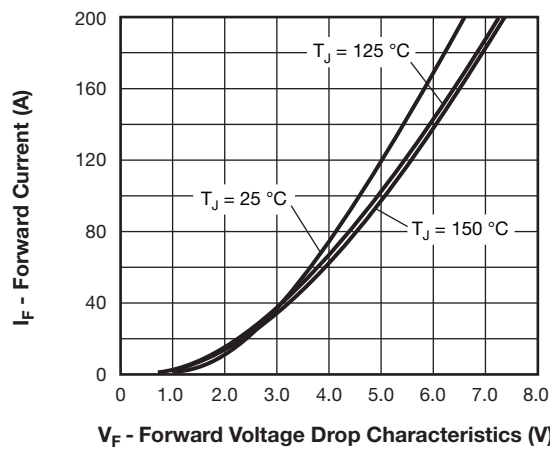


Fig. 4 - Typical Diode Forward Voltage Drop Characteristics

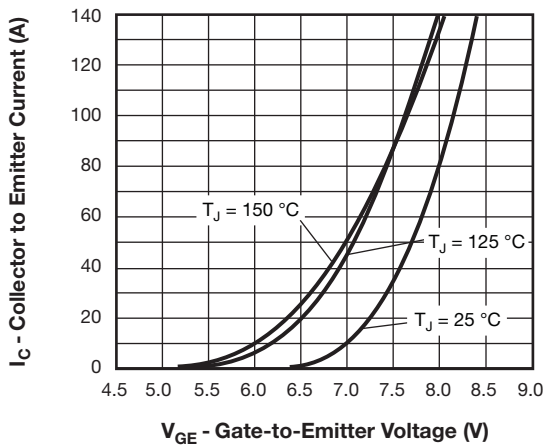


Fig. 5 - Typical IGBT Transfer Characteristics

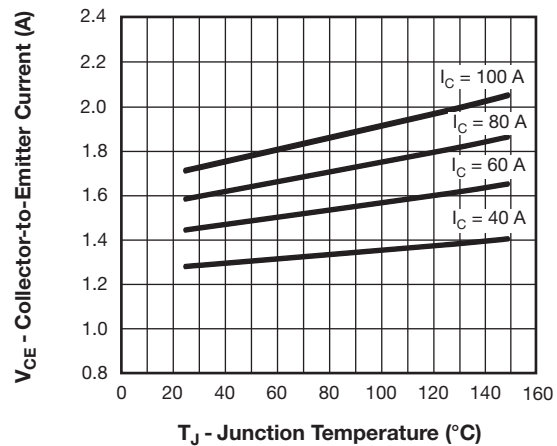


Fig. 8 - Typical IGBT Collector to Emitter Voltage vs. Junction Temperature, $V_{GE} = 15\text{ V}$

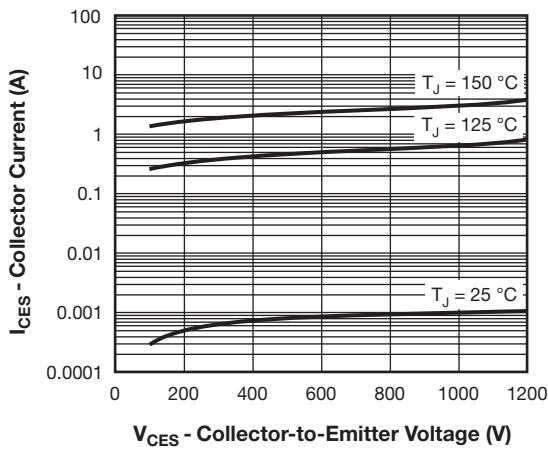


Fig. 6 - Typical IGBT Zero Gate Voltage Collector Current

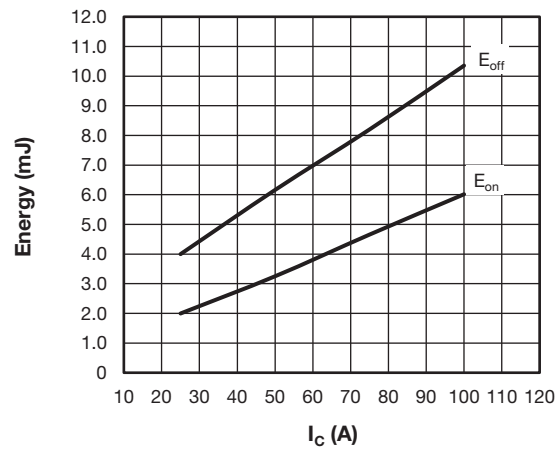


Fig. 9 - Typical IGBT Energy Losses vs. I_C
 $T_J = 125\text{ }^\circ\text{C}$, $L = 500\text{ }\mu\text{H}$, $V_{CC} = 720\text{ V}$, $R_g = 2.2\text{ }\Omega$, $V_{GE} = 15\text{ V}$
 Diode used: HFA16PB120

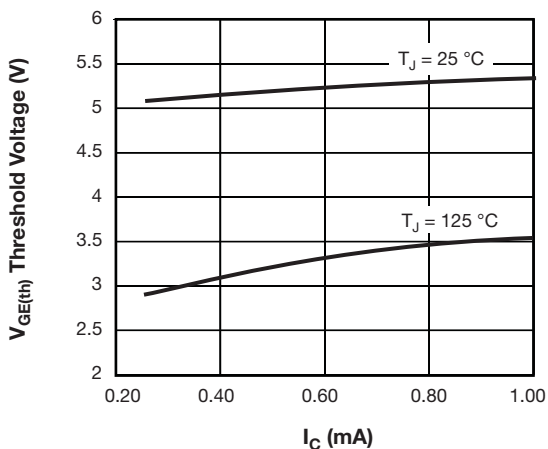


Fig. 7 - Typical IGBT Threshold Voltage

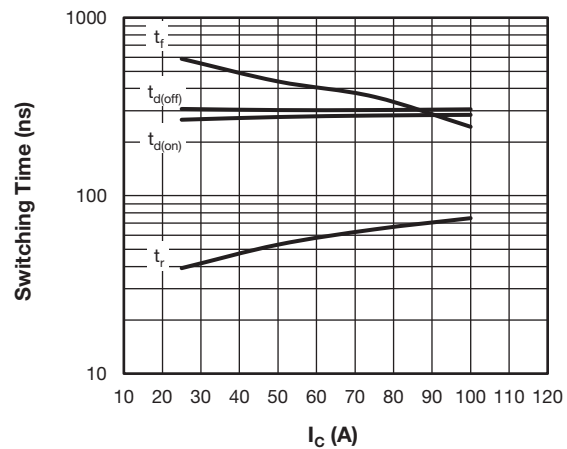


Fig. 10 - Typical IGBT Switching Time vs. I_C
 $T_J = 125\text{ }^\circ\text{C}$, $L = 500\text{ }\mu\text{H}$, $V_{CC} = 720\text{ V}$, $R_g = 2.2\text{ }\Omega$, $V_{GE} = 15\text{ V}$
 Diode used: HFA16PB120

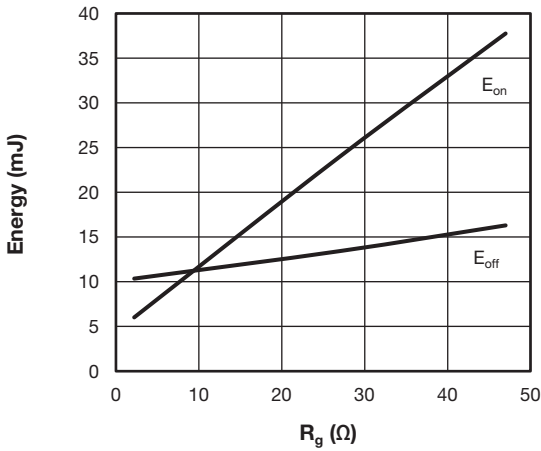


Fig. 11 - Typical IGBT Energy Losses vs. R_g
 $T_J = 125\text{ }^\circ\text{C}$, $I_C = 100\text{ A}$, $L = 500\text{ }\mu\text{H}$, $V_{CC} = 720\text{ V}$, $V_{GE} = 15\text{ V}$
Diode used: HFA16PB120

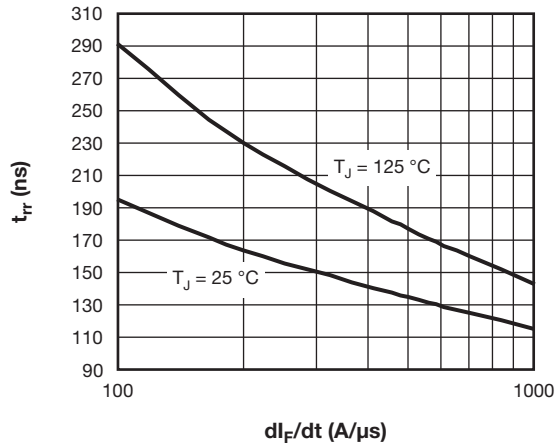


Fig. 13 - Typical Reverse Recovery Time vs. dI_F/dt , of Diode,
at $I_F = 50\text{ A}$, $V_R = 400\text{ V}$

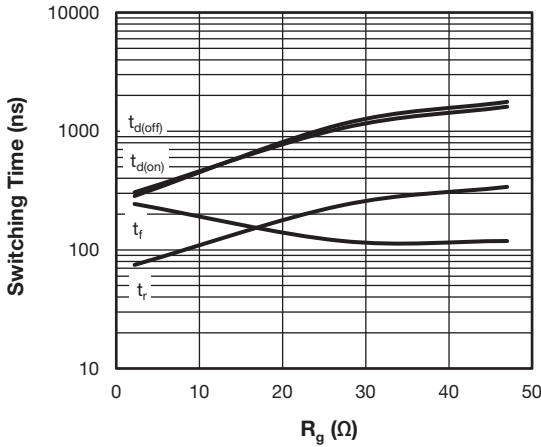


Fig. 12 - Typical IGBT Switching Time vs. R_g
 $T_J = 125\text{ }^\circ\text{C}$, $L = 500\text{ }\mu\text{H}$, $V_{CC} = 720\text{ V}$, $I_C = 100\text{ A}$, $V_{GE} = 15\text{ V}$
Diode used: HFA16PB120

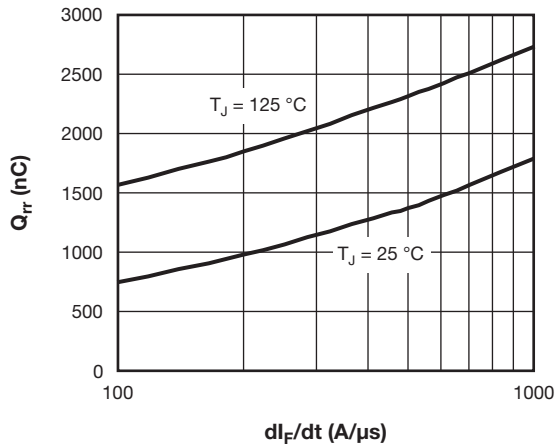


Fig. 14 - Typical Stored Charge vs. dI_F/dt of Diode,
at $I_F = 50\text{ A}$, $V_R = 400\text{ V}$

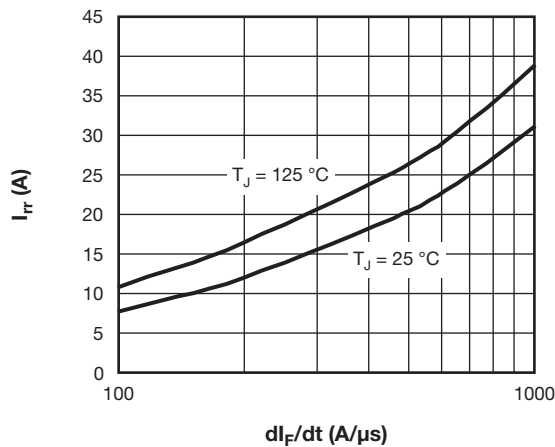


Fig. 15 - Typical Reverse Recovery Current vs. dI_F/dt , of Diode,
at $I_F = 50\text{ A}$, $V_R = 400\text{ V}$

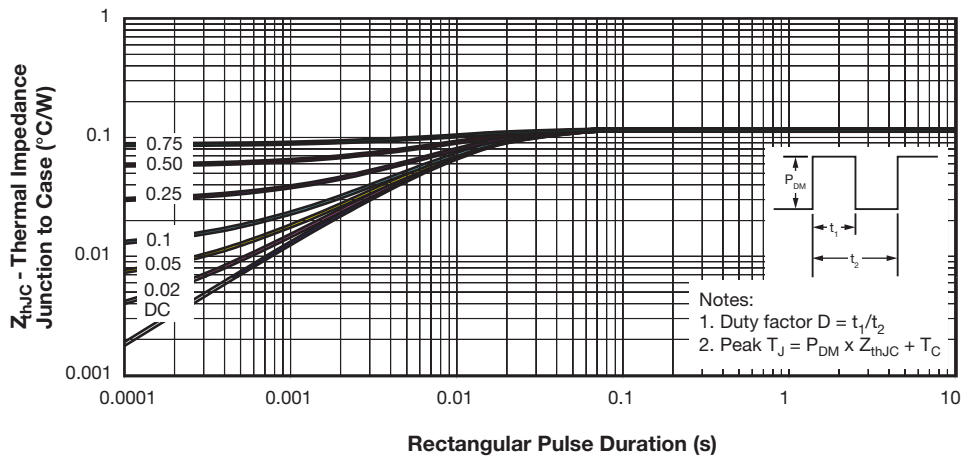


Fig. 16 - Maximum Thermal Impedance Z_{thJC} Characteristics (IGBT)

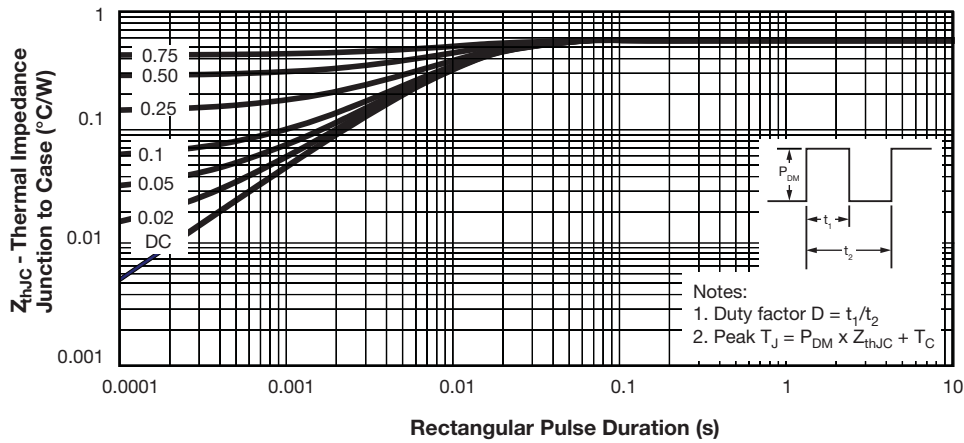


Fig. 17 - Maximum Thermal Impedance Z_{thJC} Characteristics (Diode)

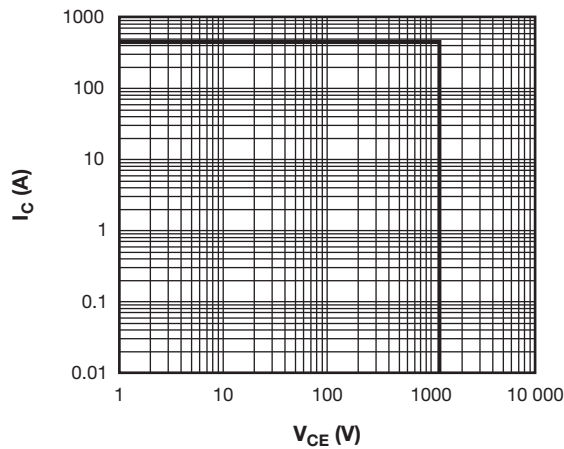
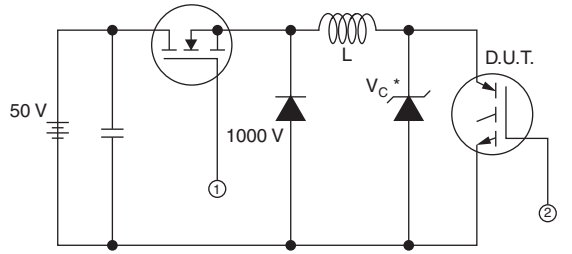


Fig. 18 - IGBT Reverse Bias SOA, $T_J = 150\text{ }^\circ\text{C}$, $V_{GE} = 15\text{ V}$



* Driver same type as D.U.T.; $V_C = 80\%$ of $V_{ce(max)}$
 * Note: Due to the 50 V power supply, pulse width and inductor will increase to obtain I_d

Fig. 19 - Clamped Inductive Load Test Circuit

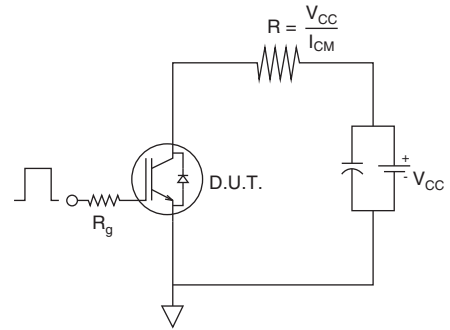


Fig. 19b - Pulsed Collector Current Test Circuit

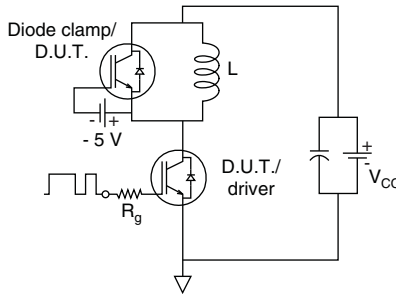


Fig. 20a - Switching Loss Test Circuit

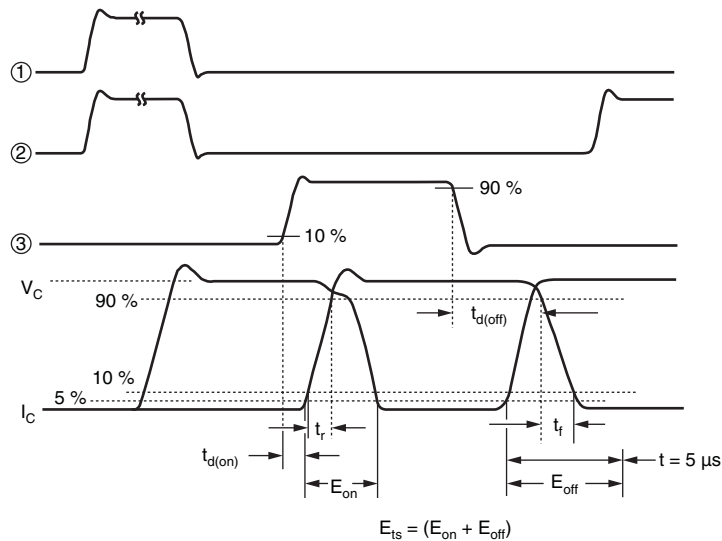


Fig. 20b - Switching Loss Waveforms Test Circuit

ORDERING INFORMATION TABLE

Device code	VS-	G	T	175	D	A	120	U
	①	②	③	④	⑤	⑥	⑦	⑧

- 1** - Vishay Semiconductors product
- 2** - Insulated Gate Bipolar Transistor (IGBT)
- 3** - Trench IGBT technology
- 4** - Current rating (175 = 175 A)
- 5** - Circuit configuration (D = Single switch with antiparallel diode)
- 6** - Package indicator (A = SOT-227)
- 7** - Voltage rating (120 = 1200 V)
- 8** - Speed/type (U = Ultrafast)

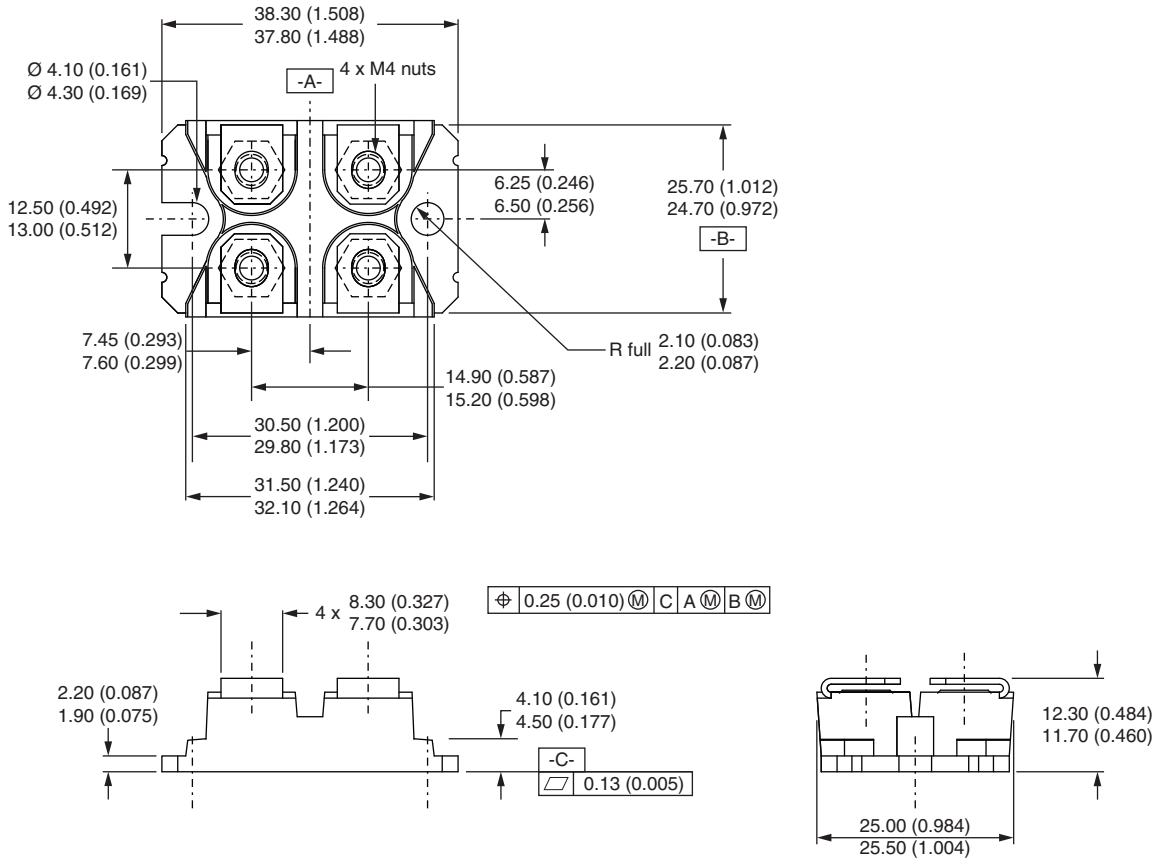
CIRCUIT CONFIGURATION		
CIRCUIT	CIRCUIT CONFIGURATION CODE	CIRCUIT DRAWING
Single switch diode	D	

LINKS TO RELATED DOCUMENTS	
Dimensions	www.vishay.com/doc?95423
Packaging information	www.vishay.com/doc?95425



SOT-227 Generation II

DIMENSIONS in millimeters (inches)



Note

- Controlling dimension: millimeter



Disclaimer

ALL PRODUCT, PRODUCT SPECIFICATIONS AND DATA ARE SUBJECT TO CHANGE WITHOUT NOTICE TO IMPROVE RELIABILITY, FUNCTION OR DESIGN OR OTHERWISE.

Vishay Intertechnology, Inc., its affiliates, agents, and employees, and all persons acting on its or their behalf (collectively, "Vishay"), disclaim any and all liability for any errors, inaccuracies or incompleteness contained in any datasheet or in any other disclosure relating to any product.

Vishay makes no warranty, representation or guarantee regarding the suitability of the products for any particular purpose or the continuing production of any product. To the maximum extent permitted by applicable law, Vishay disclaims (i) any and all liability arising out of the application or use of any product, (ii) any and all liability, including without limitation special, consequential or incidental damages, and (iii) any and all implied warranties, including warranties of fitness for particular purpose, non-infringement and merchantability.

Statements regarding the suitability of products for certain types of applications are based on Vishay's knowledge of typical requirements that are often placed on Vishay products in generic applications. Such statements are not binding statements about the suitability of products for a particular application. It is the customer's responsibility to validate that a particular product with the properties described in the product specification is suitable for use in a particular application. Parameters provided in datasheets and / or specifications may vary in different applications and performance may vary over time. All operating parameters, including typical parameters, must be validated for each customer application by the customer's technical experts. Product specifications do not expand or otherwise modify Vishay's terms and conditions of purchase, including but not limited to the warranty expressed therein.

Except as expressly indicated in writing, Vishay products are not designed for use in medical, life-saving, or life-sustaining applications or for any other application in which the failure of the Vishay product could result in personal injury or death. Customers using or selling Vishay products not expressly indicated for use in such applications do so at their own risk. Please contact authorized Vishay personnel to obtain written terms and conditions regarding products designed for such applications.

No license, express or implied, by estoppel or otherwise, to any intellectual property rights is granted by this document or by any conduct of Vishay. Product names and markings noted herein may be trademarks of their respective owners.