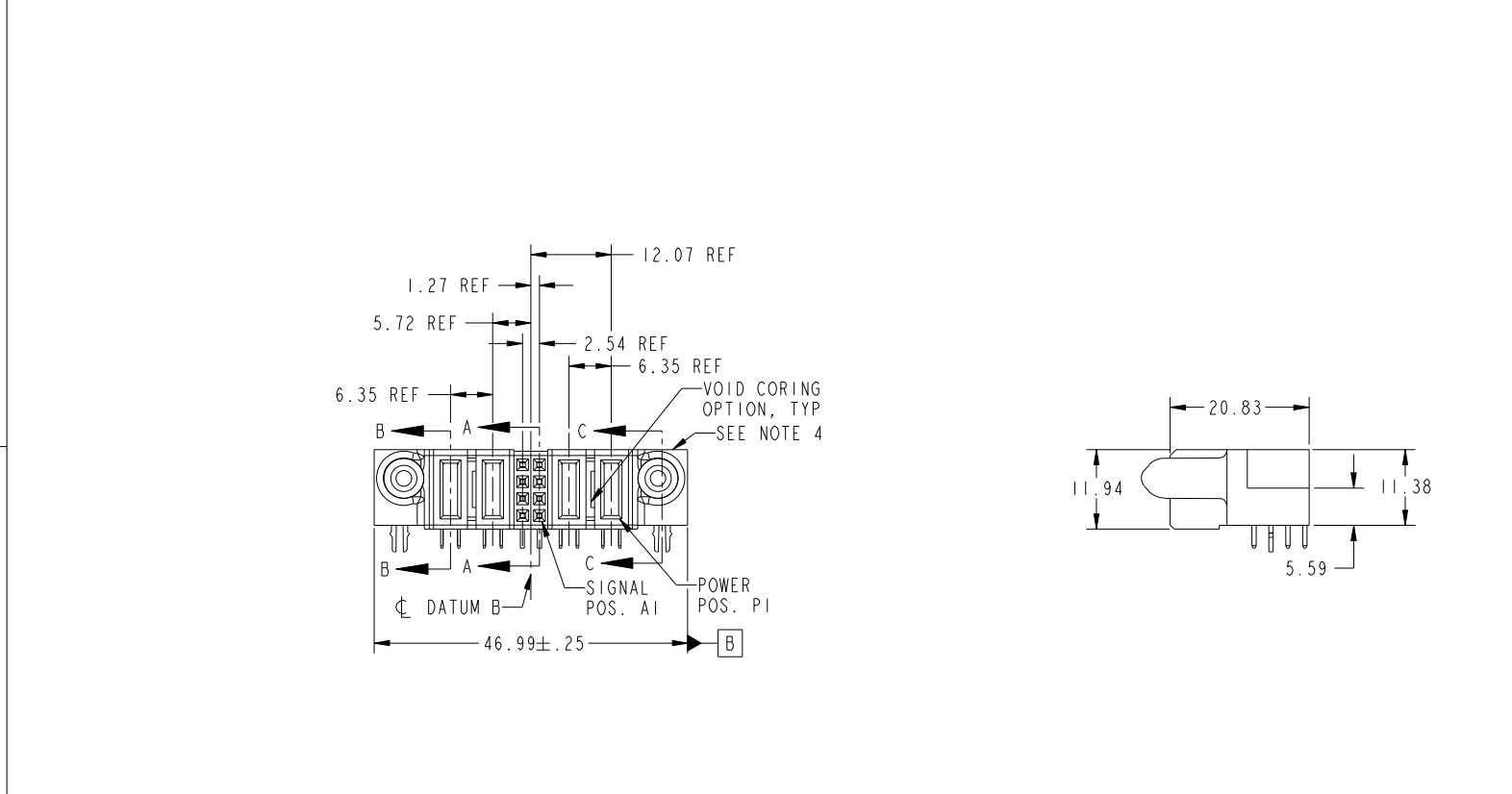
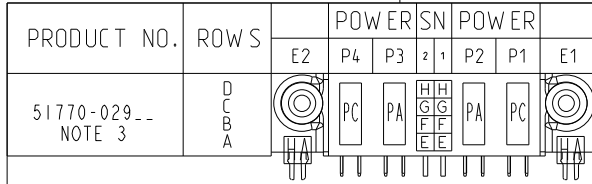


Tous droits strictement reserves. Reproduction ou communication a des tiers interdite sous quelque forme que ce soit sans autorisation écrite du propriétaire. Propriete de c FCI. Droits de reproduction FCI.



All rights strictly reserved. Reproduction or issue to third parties in any form whatever is not permitted without written authority from the proprietor. Property of FCI. Copyright FCI.



CODE	DIM "M" MATING LENGTH	CONTACT TYPE
PA	[1.07]	POWER
H	[N/A]	SIGNAL
G	[N/A]	SIGNAL
F	[N/A]	SIGNAL
E	[N/A]	SIGNAL
HA	[N/A]	HOLD-DOWN
PC	[2.34]	POWER

mat'l code				SEE NOTE 2		tolerances unless otherwise specified		CUSTOMER	
ltr	ecn no.	dr	date	linear	0.X ± 0.3	projection		COPY	
A	DG06-0533	JMG	12/13/06	angles	0.XX ± 0.13	MIM		title	
				enr	0.XXX ± 0.051	scale		2P + 8S + 2P	
				chr	0° ± 2°	1:1		R/A SOLDER RECEPTACLE	
				appd	JM GUO 12/13/06			product family PwrBlade code	
					RYAN YUAN 12/13/06			size 213	
					BEER FU 12/13/06			dwg no 51770-029 sheet	
					JOSEPH HSIA 12/13/06			1 of 4	
sheet index	revision sheet	A 1	A 2	A 3	A 4				

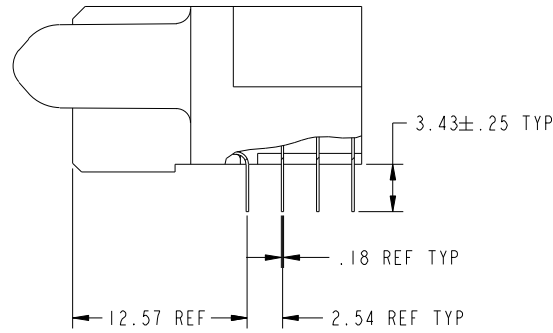
www.fciconnect.com  
**FCI**  
 title: 2P + 8S + 2P R/A SOLDER RECEPTACLE  
 product family: PwrBlade code: 213  
 size: A dwg no: 51770-029 sheet: 1 of 4  
 cage code: 22526

Tous droits strictement reserves. Reproduction ou communication a des tiers interdite sous quelque forme que ce soit sans autorisation ecrite du proprietaire. Propriete de c FCI. Droits de reproduction FCI.

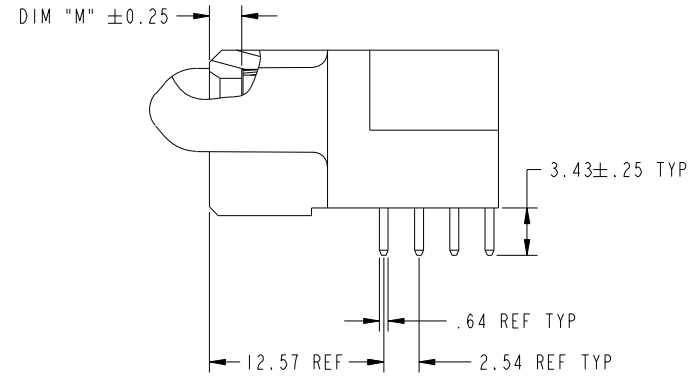


All rights strictly reserved. Reproduction or issue to third parties in any form whatever is not permitted without written authority from the proprietor. Property of FCI. Copyright FCI.

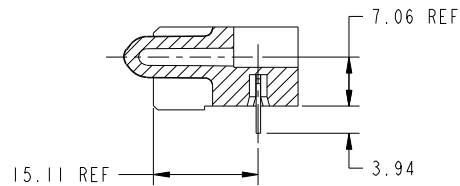
PRODUCT NUMBER  
51770-029--  
NOTE 3



BROKEN-OUT SECTION A-A  
SCALE 2:1



BROKEN-OUT SECTION B-B  
SCALE 2:1



SECTION C-C

mat'l code		SEE NOTE 2		tolerances unless otherwise specified		CUSTOMER		FCI	
ltr	ecn no.	dr	date	linear	0.X ± 0.3	COPY		www.fciconnect.com	
A					0.XX ± 0.13	projection		title	
				angles	0.XXX ± 0.051			2P + 8S + 2P R/A SOLDER RECEPTACLE	
				dr	0° ± 2°			product family PwrBlade code	
				enrg	JM GUO 12/13/06	scale		size	
				chr	RYAN YUAN 12/13/06	1:1		dwg no	
				appd	BEER FU 12/13/06			51770-029	
					JOSEPH HSIA 12/13/06			sheet	
sheet index	revision sheet							2 of 4	

cage code 22526

Pro/E



Tous droits strictement reserves. Reproduction ou communication a des tiers interdite sous quelque forme que ce soit sans autorisation écrite du propriétaire. Propriete de c FCI. Droits de reproduction FCI.

All rights strictly reserved. Reproduction or issue to third parties in any form whatever is not permitted without written authority from the proprietor. Property of FCI. Copyright FCI.

PRODUCT NUMBER  
51770-029--  
NOTE 3

NOTES:

1. DIMENSIONS AND TOLERANCES ARE IN ACCORDANCE WITH ASME Y14.5M, 1994 UNLESS OTHERWISE SPECIFIED.

CONNECTOR NOTES:

- 2. HOUSING MATERIAL: UL 94 V-0 GLASS FILLED  
HIGH-TEMP THERMOPLASTIC  
POWER CONTACT MATERIAL: COPPER ALLOY  
SIGNAL PIN MATERIAL: COPPER ALLOY
  - 3. PLATING:  
51770-029,51770-029LF PLATING SPEC. WAS SHOWN IN THE PRINT OF 10064183.
  - 4. MANUFACTURER'S NAME, P/N, AND DATE CODE TO APPEAR ON THIS SURFACE.
  - 5. PRODUCT SPECIFICATION GS-12-149.  
APPLICATION SPECIFICATION BUS-20-067.
  - 6. PACKAGED IN TRAYS.
- PCB NOTES:
- 7. ALL HOLE DIAMETERS ARE FINISHED HOLE SIZE.
  - 8. MOUNTING HOLES, WHERE APPLICABLE, ARE UNPLATED.
  - 9.  $\varnothing 1.151 \pm 0.025$  DRILLED HOLES PLATED WITH  
0.008 MIN SnPb OVER 0.03  
TO 0.08 Cu PLATING TO ACHIEVE  
 $\varnothing 1.02 \pm .07$  HOLE.
  - 10. "DIM XXX" TO BE DETERMINED BY THE CUSTOMER.
  - 11. CONNECTOR KEEP-OUT ZONE.

mat'l code		SEE NOTE 2		tolerances unless otherwise specified		CUSTOMER		FCI	
ltr	ecr no.	dr	date	linear	0.X ± 0.3	COPY		www.fciconnect.com	
A				linear	0.XX ± 0.13	projection	title		
				angles	0.XXX ± 0.051		2P + 8S + 2P R/A SOLDER RECEPTACLE		
				dr	0° ± 2°	MIM	product family	PwrBlade	code
				enr	JM GUO 12/13/06	← MIM →	size	dwg no	213
				chr	RYAN YUAN 12/13/06	scale	A	51770-029	sheet
				appd	BEER FU 12/13/06	1:1			4 of 4
					JOSEPH HSIA 12/13/06				
sheet index	revision sheet								

cage code 22526

Pro/E