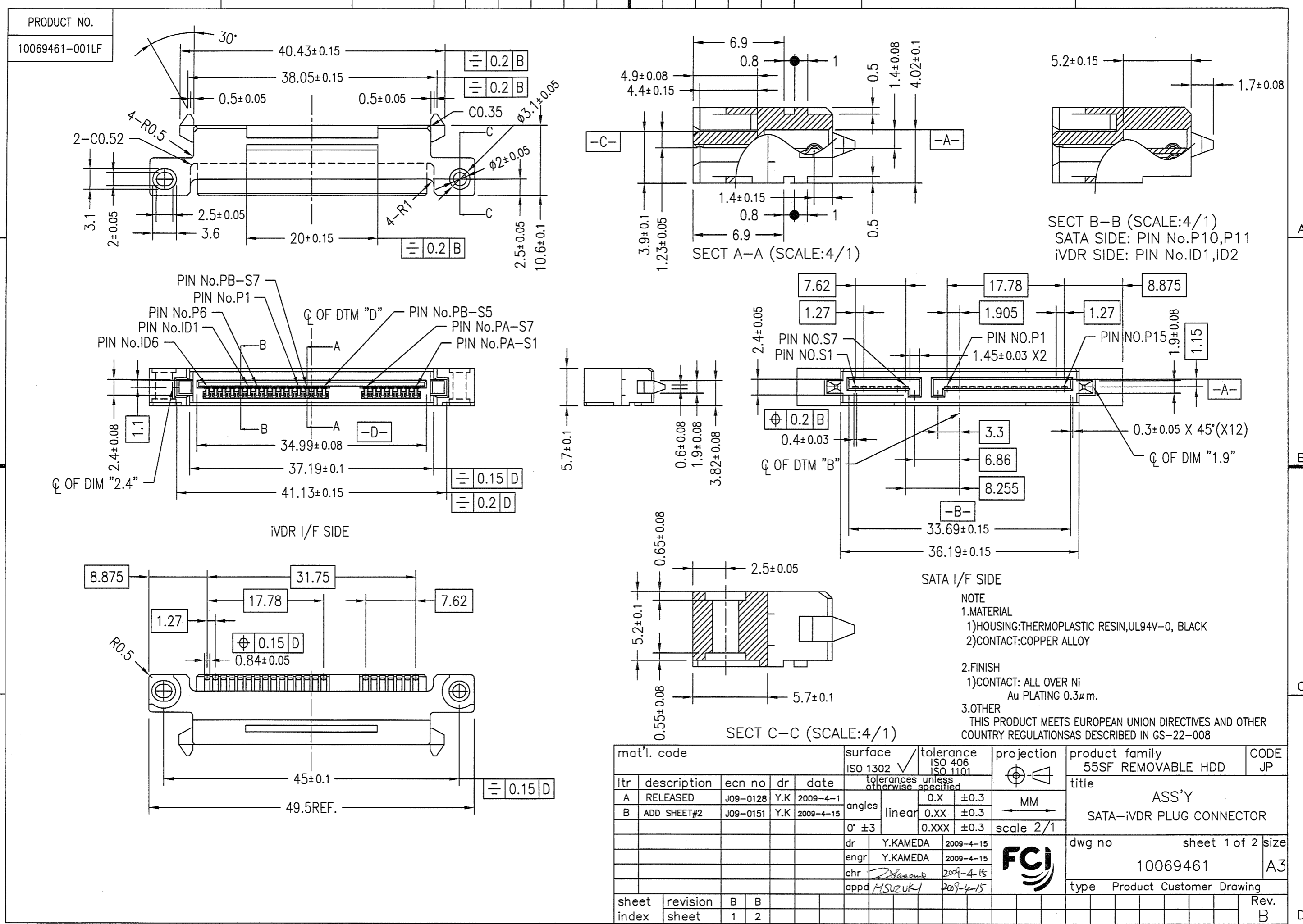


This document is the property of and embodies CONFIDENTIAL and PROPRIETARY information of FCI. No part of the information shown on this document may be used in any way or disclosed to others without the written consent of FCI. Copyright FCI.

FCI CONFIDENTIAL

FCI

FCconnect.com

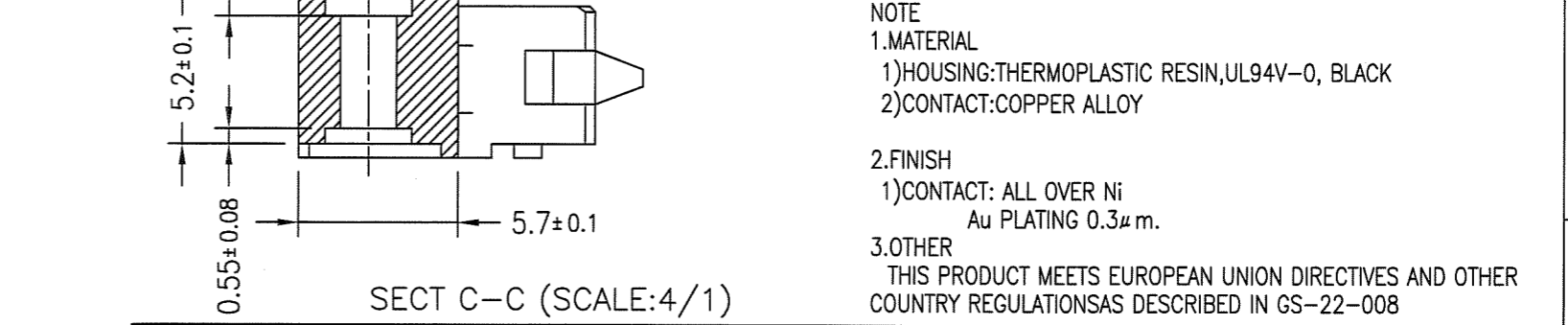
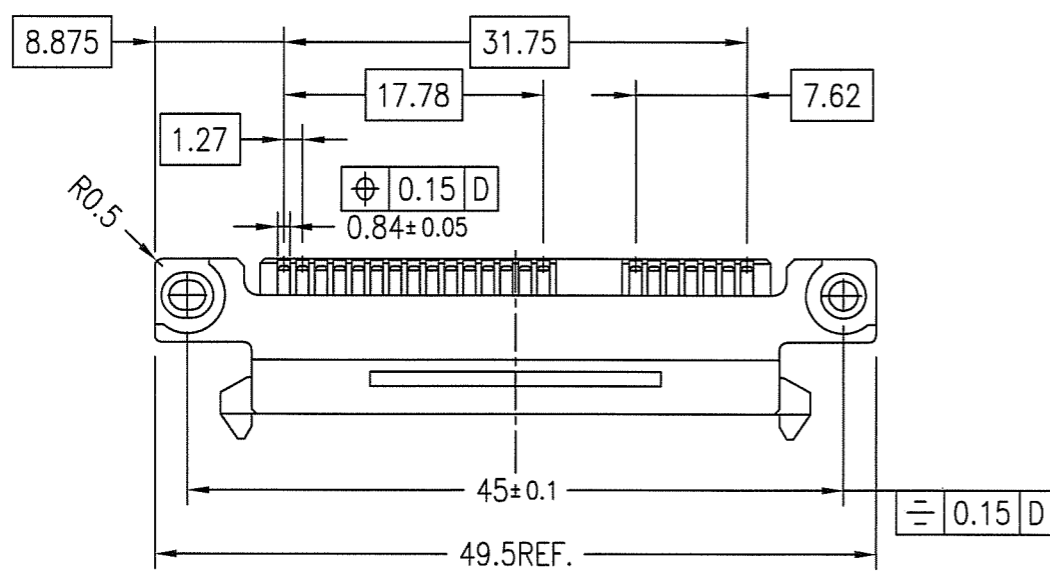
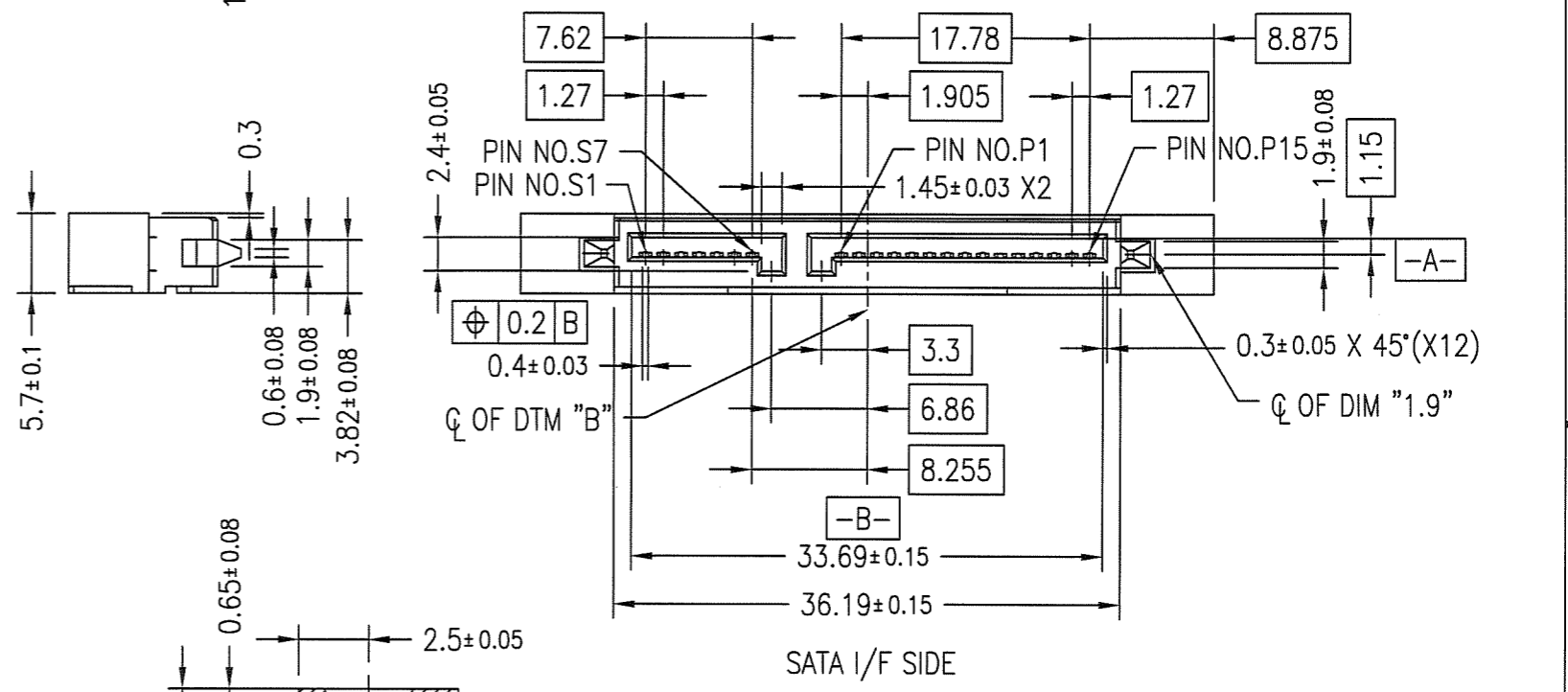
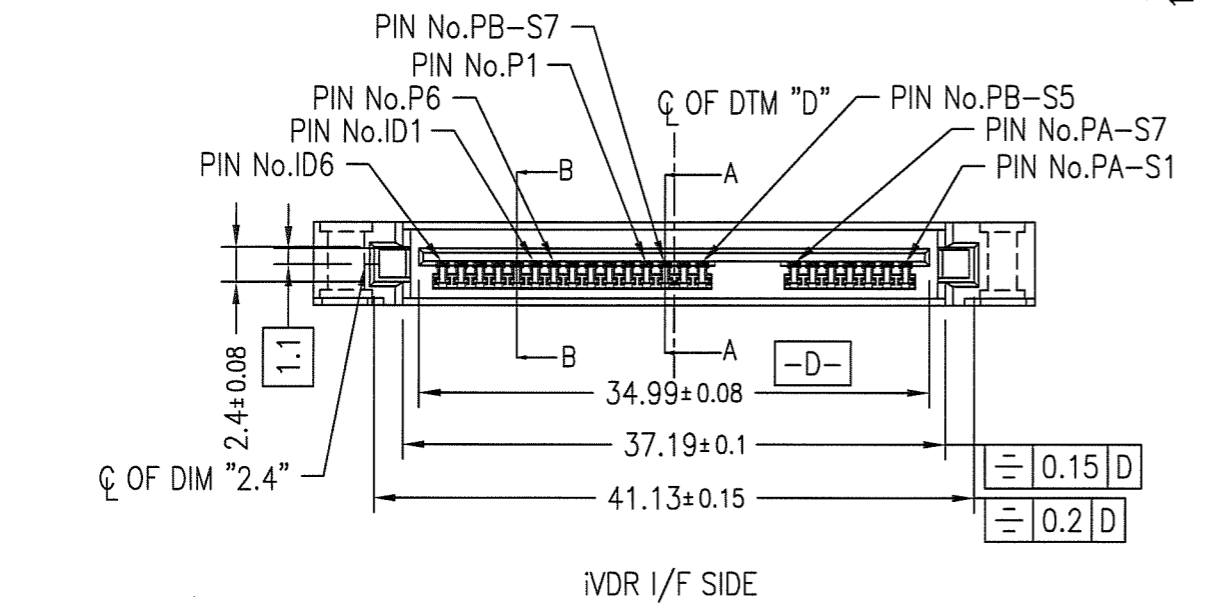
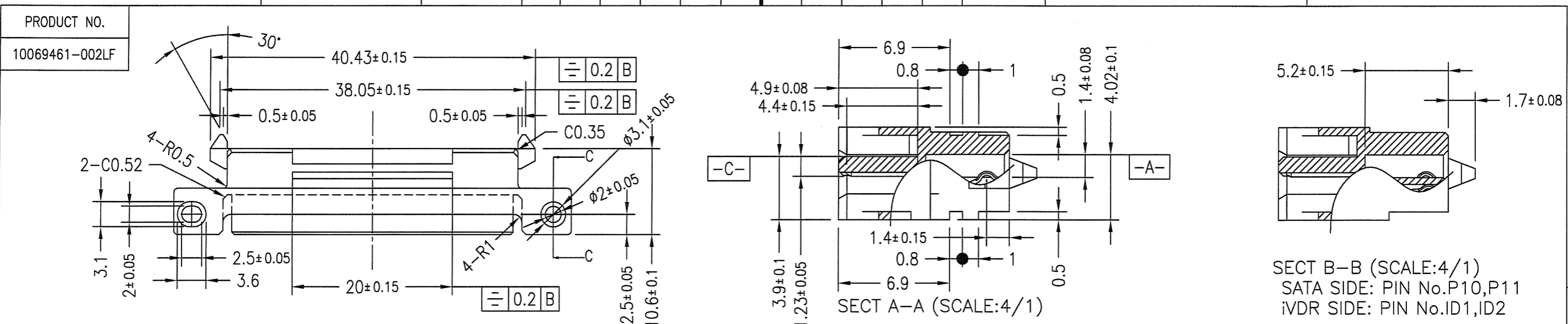


mat'l. code		surface ISO 1302		tolerance ISO 406 ISO 1101		projection		product family 55SF REMOVABLE HDD		CODE JP	
ltr	description	ecn no	dr	date	tolerances unless otherwise specified		MM	title ASS'Y SATA-iVDR PLUG CONNECTOR			
A	RELEASED	J09-0128	Y.K	2009-4-1	angles	linear					
B	ADD SHEET#2	J09-0151	Y.K	2009-4-15	0° ±3	0.X ±0.3 0.XX ±0.3 0.XXX ±0.3	scale 2/1	dwg no		sheet 1 of 2 size	
sheet index		revision		B		FCI		10069461		A3	
sheet		sheet		1		type		Product Customer Drawing		Rev. B	

FCI CONFIDENTIAL



This document is the property of and embodies CONFIDENTIAL and PROPRIETARY information of FCI. No part of the information shown on this document may be used in any way or disclosed to others without the written consent of FCI. Copyright FCI.



NOTE
 1.MATERIAL
 1)HOUSING:THERMOPLASTIC RESIN,UL94V-0, BLACK
 2)CONTACT:COPPER ALLOY
 2.FINISH
 1)CONTACT: ALL OVER Ni
 Au PLATING 0.3μm.
 3.OTHER
 THIS PRODUCT MEETS EUROPEAN UNION DIRECTIVES AND OTHER COUNTRY REGULATIONSAS DESCRIBED IN GS-22-008

mat'l. code		surface ISO 1302		tolerance ISO 406 ISO 1101		projection		product family		CODE	
ISO 1302		ISO 406		ISO 1101		MM		55SF REMOVABLE HDD		JP	
tolerances unless otherwise specified		angles		linear		scale 2/1		title		ASS'Y	
0° ±3		0.X ±0.3		0.XX ±0.3		0.XXX ±0.3		SATA-iVDR PLUG CONNECTOR		SATA-iVDR PLUG CONNECTOR	
dr Y.KAMEDA 2009-4-15		enr Y.KAMEDA 2009-4-15		chr H.SUZUKI 2009-4-15		appd H.SUZUKI 2009-4-15		dwg no 10069461		sheet 2 of 2 size A3	
sheet index		revision sheet						type Product Customer Drawing		Rev. B	