

PART NO.	HRS NO.	CONTACTS	A	B	C	D	E	F
DF14-2P-1.25H(26)	CL538-0021-4-26	2	7.45	1.25	2.95	3.65	6.45	8.05
DF14-3P-1.25H(26)	CL538-0022-7-26	3	8.70	2.50	4.20	4.90	7.70	9.30
DF14-4P-1.25H(26)	CL538-0023-0-26	4	9.95	3.75	5.45	6.15	8.95	10.55
DF14-5P-1.25H(26)	CL538-0024-2-26	5	11.20	5.00	6.70	7.40	10.20	11.80
DF14-6P-1.25H(26)	CL538-0025-5-26	6	12.45	6.25	7.95	8.65	11.45	13.05
DF14-7P-1.25H(26)	CL538-0026-8-26	7	13.70	7.50	9.20	9.90	12.70	14.30
DF14-8P-1.25H(26)	CL538-0027-0-26	8	14.95	8.75	10.45	11.15	13.95	15.55
DF14-9P-1.25H(26)	CL538-0028-3-26	9	16.20	10.00	11.70	12.40	15.20	16.80
DF14-10P-1.25H(26)	CL538-0029-6-26	10	17.45	11.25	12.95	13.65	16.45	18.05
DF14-15P-1.25H(26)	CL538-0084-4-26	15	23.70	17.50	19.20	19.90	22.70	24.30
DF14-20P-1.25H(26)	CL538-0089-8-26	20	29.95	23.75	25.45	26.15	28.95	30.55
DF14-25P-1.25H(26)	CL538-0094-8-26	25	36.20	30.00	31.70	32.40	35.20	36.80
DF14-30P-1.25H(26)	CL538-0020-1-26	30	42.45	36.25	37.95	38.65	41.45	43.05

3	PHOSPHOR BRONZE	TIN-COPPER PLATED 1μm min UNDER PLATING: NICKEL PLATED 0.5μm min	5	POLYESTER	CLEAR (COVER TAPE)
2	BRASS	TIN-COPPER PLATED 1μm min UNDER PLATING: NICKEL PLATED 0.5μm min	4	A-PET	CLEAR (EMBOSSED CARRIER TAPE)
1	POLYAMIDE	BEIGE, UL94V-0			
NO.	MATERIAL	FINISH, REMARKS	NO.	MATERIAL	FINISH, REMARKS

CL	CL
CL	CL

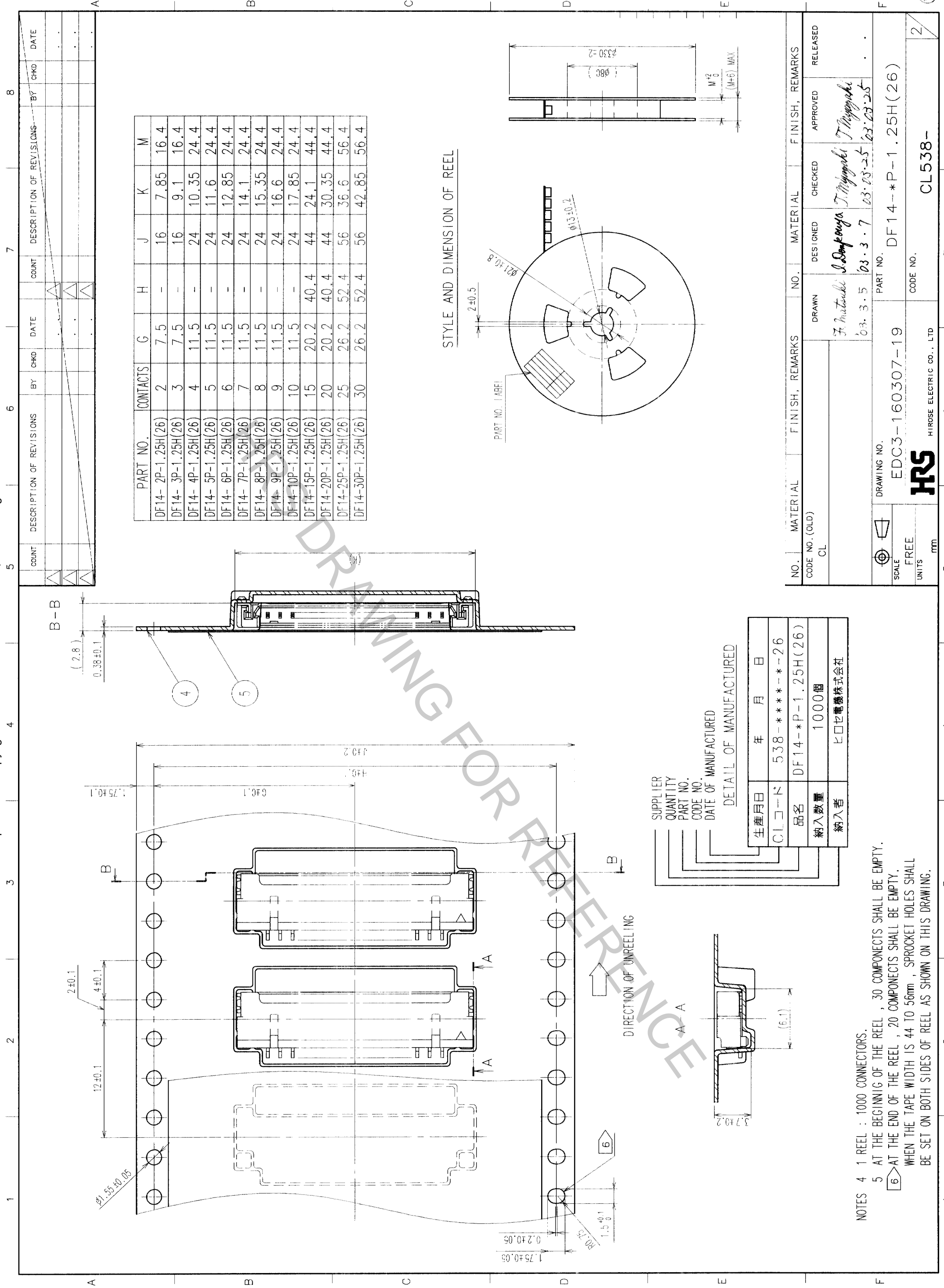
  

DRAWN	DESIGNED	CHECKED	APPROVED	RELEASED
F. Inoue	S. Sankawa	T. Miyagaki	T. Miyagaki	
03.3.5	03.3.7	03.03.25	03.03.25	

DRAWING NO.	PART NO.
EDC3-160307-19	DF14-*P-1.25H(26)
SCALE	CODE NO.
5 : 1	CL538-
UNITS	
mm	

TO



PART NO.	CONTACTS	G	H	J	K	M
DF14-2P-1.25H(26)	2	7.5	-	16	7.85	16.4
DF14-3P-1.25H(26)	3	7.5	-	16	9.1	16.4
DF14-4P-1.25H(26)	4	11.5	-	24	10.35	24.4
DF14-5P-1.25H(26)	5	11.5	-	24	11.6	24.4
DF14-6P-1.25H(26)	6	11.5	-	24	12.85	24.4
DF14-7P-1.25H(26)	7	11.5	-	24	14.1	24.4
DF14-8P-1.25H(26)	8	11.5	-	24	15.35	24.4
DF14-9P-1.25H(26)	9	11.5	-	24	16.6	24.4
DF14-10P-1.25H(26)	10	11.5	-	24	17.85	24.4
DF14-15P-1.25H(26)	15	20.2	40.4	44	24.1	44.4
DF14-20P-1.25H(26)	20	20.2	40.4	44	30.35	44.4
DF14-25P-1.25H(26)	25	26.2	52.4	56	36.6	56.4
DF14-30P-1.25H(26)	30	26.2	52.4	56	42.85	56.4

STYLE AND DIMENSION OF REEL

SUPPLIER		DETAIL OF MANUFACTURED	
生年月日	年 月 日	生産月日	年 月 日
数量	538-**-**-26	CLコード	538-**-**-26
品名	DF14-*P-1.25H(26)	納入数量	1000個
納入者	ヒロセ電機株式会社	納入者	ヒロセ電機株式会社

NOTES 4 1 REEL : 1000 CONNECTORS.  
 5 AT THE BEGINNING OF THE REEL , 30 COMPONENTS SHALL BE EMPTY.  
 6 AT THE END OF THE REEL , 20 COMPONENTS SHALL BE EMPTY.  
 WHEN THE TAPE WIDTH IS 44 TO 56mm , SPROCKET HOLES SHALL BE SET ON BOTH SIDES OF REEL AS SHOWN ON THIS DRAWING.

NO.	MATERIAL	FINISH, REMARKS	NO.	MATERIAL	FINISH, REMARKS
CODE NO. (OLD)	CL		DESIGNED	J. Miyagaki	APPROVED
SCALE	FREE		DRAWN	F. Matsuda	CHECKED
UNITS	mm		DATE	03.3.5	DATE
DRAWING NO.	EDC3-160307-19		DESIGNED	J. Miyagaki	APPROVED
PART NO.	DF14-*P-1.25H(26)		DATE	03.03.25	DATE
CODE NO.			DATE	03.03.25	DATE