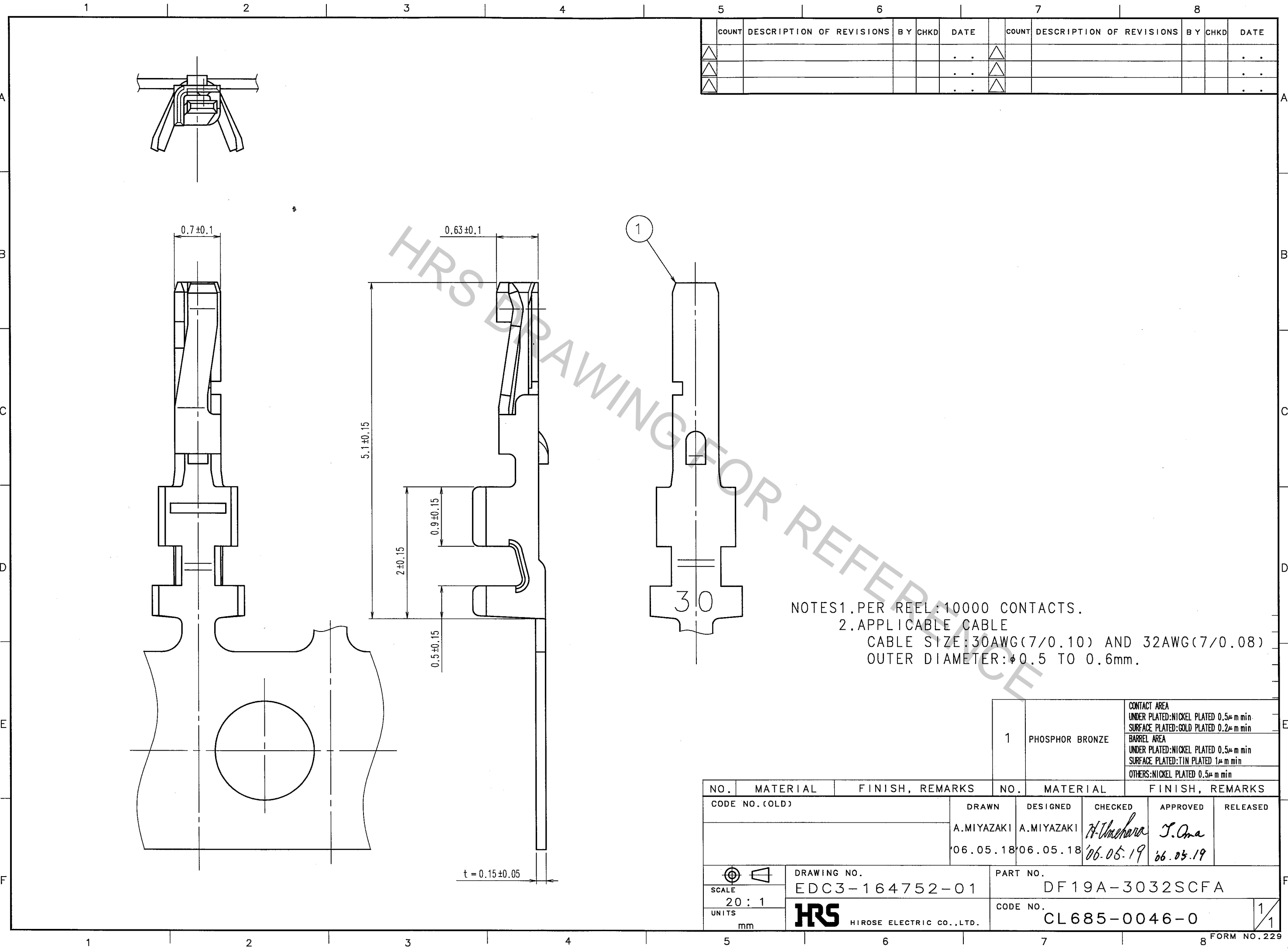


Apr.1.2017 Copyright 2017 HIROSE ELECTRIC CO., LTD. All Rights Reserved.



COUNT	DESCRIPTION OF REVISIONS	BY	CHKD	DATE	COUNT	DESCRIPTION OF REVISIONS	BY	CHKD	DATE
△				..	△				..
△				..	△				..
△				..	△				..

NOTES
 1. PER REEL: 10000 CONTACTS.
 2. APPLICABLE CABLE
 CABLE SIZE: 30AWG(7/0.10) AND 32AWG(7/0.08)
 OUTER DIAMETER: $\phi 0.5$ TO 0.6 mm.

1	PHOSPHOR BRONZE	CONTACT AREA UNDER PLATED: NICKEL PLATED $0.5 \mu\text{m min}$ SURFACE PLATED: GOLD PLATED $0.2 \mu\text{m min}$
		BARREL AREA UNDER PLATED: NICKEL PLATED $0.5 \mu\text{m min}$ SURFACE PLATED: TIN PLATED $1 \mu\text{m min}$
		OTHERS: NICKEL PLATED $0.5 \mu\text{m min}$

NO.	MATERIAL	FINISH, REMARKS	NO.	MATERIAL	FINISH, REMARKS
CODE NO. (OLD)			DRAWN	DESIGNED	CHECKED
			A.MIYAZAKI	A.MIYAZAKI	H. Umehara
			'06.05.18	'06.05.18	'06.05.19
			APPROVED	RELEASED	
			J. Oma		
			'06.05.19	'06.05.19	
DRAWING NO. EDC3-164752-01		PART NO. DF19A-3032SCFA			
SCALE 20:1		UNITS mm		CODE NO. CL685-0046-0	
HRS HIROSE ELECTRIC CO., LTD.				1/1	

TO