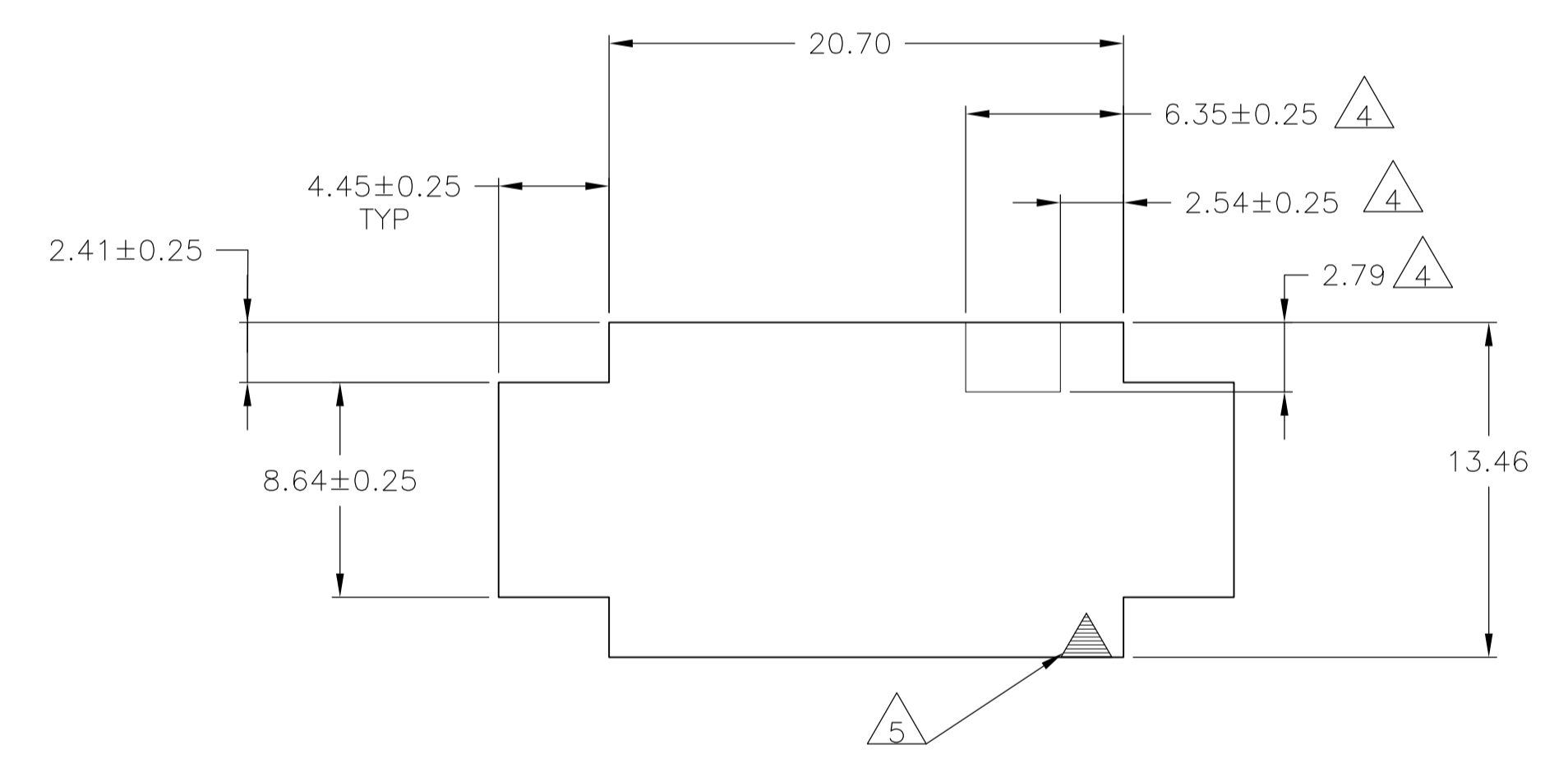
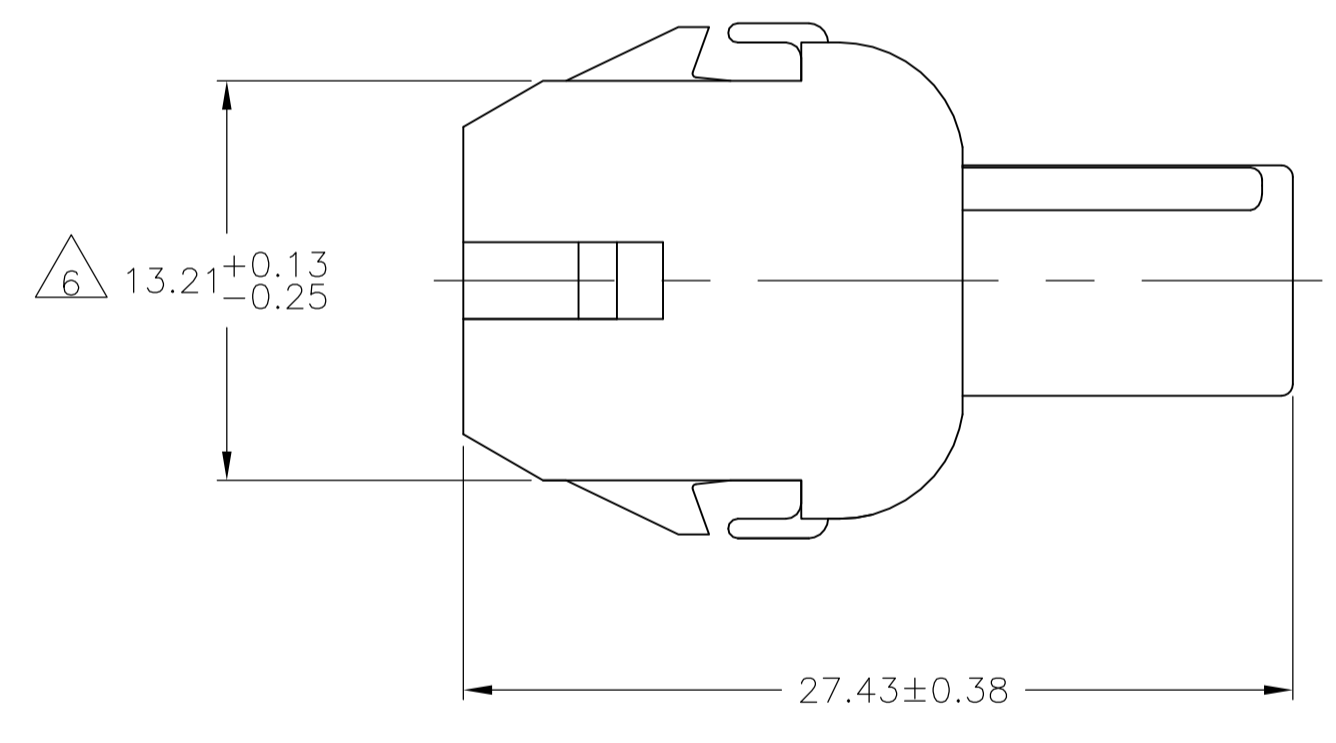
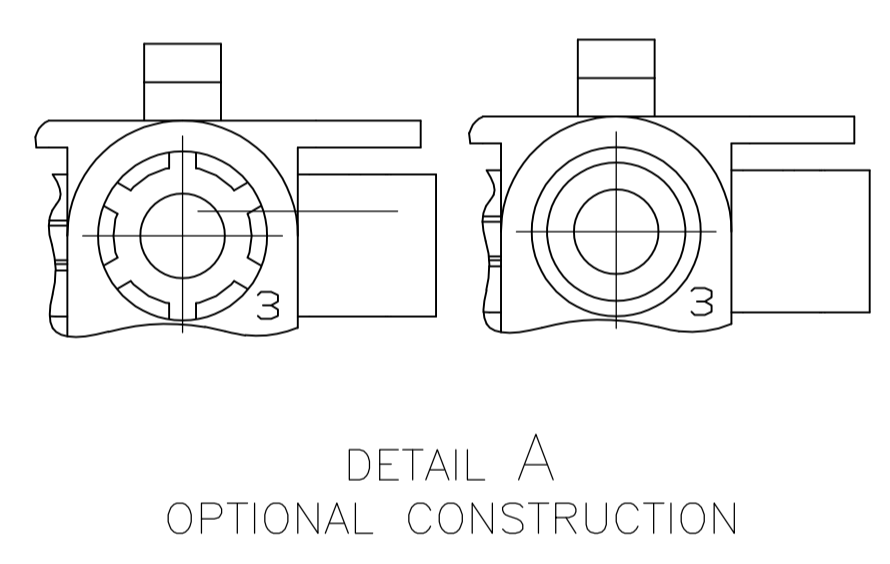
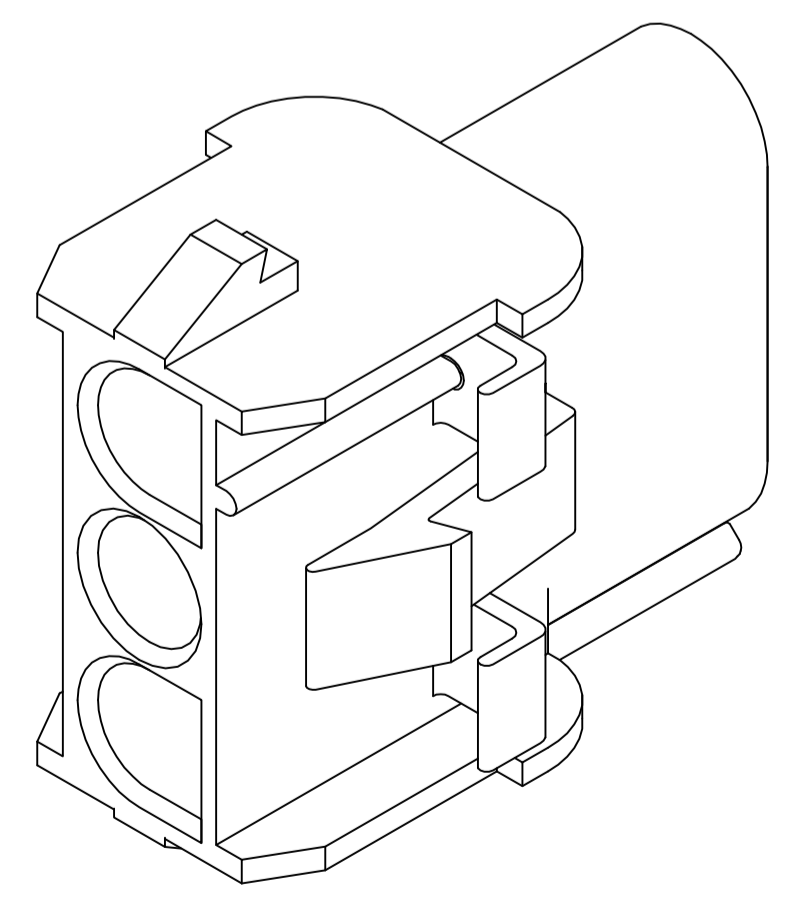


1. MATES WITH APPROPRIATE UNIVERSAL MATE-N-LOK™ PLUG.
2. RECOMMENDED PANEL THICKNESS 0.76 - 2.29.
3. PANEL MUST BE PUNCHED SO THAT THE HOUSING ENTERS THE PANEL IN THE SAME DIRECTION AS THE PUNCH.
4. OPTIONAL FOR KEYING HOUSING IN PANEL.
5. CIRCUIT NUMBER 1 LOCATION.
6. DIMENSION INDICATED IS AS MOLDED. ADDITIONAL GROWTH DUE TO SUBSEQUENT MOISTURE ABSORPTION MAY OCCUR.
7. FOUR RIBS EQUALLY SPACED, NO SPECIFIC ORIENTATION. NO RIBS OR SIX RIBS EQUALLY SPACED, NO SPECIFIC ORIENTATION, OPTIONAL.
8. UNDERWRITERS RECOGNIZED COMPONENT LOGO TO BE LOCATED ONCE EACH ON SIDE OF HOUSING.
9. MATERIAL CORRESPONDING TO THE REQUIREMENT OF IEC60335-1 (INCL. GLOW WIRE TEST 750° C WITHOUT FLAME)
10. PRELIMINARY PART NOT RELEASED FOR PRODUCTION.



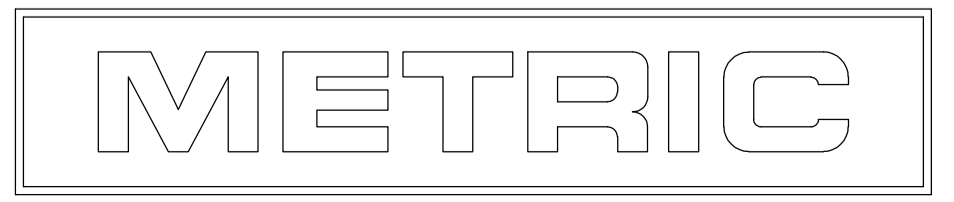
RECOMMENDED PANEL CUT OUT



3-DIMENSIONAL MODEL NTS

4.45	.175	27.43	1.080
2.79	.110	20.70	.815
2.54	.100	20.32	.800
2.41	.095	13.46	.530
2.29	.090	13.21	.520
0.76	.030	8.64	.340
0.38	.015	8.13	.320
0.25	.010	7.62	.300
0.13	.005	6.35	.250
MM	IN	MM	IN

CONVERSION TABLE



THIS DRAWING IS A CONTROLLED DOCUMENT.		DIN	24JUN2013	MGT	
DIMENSIONS: mm		CHK	24JUN2013	R.P	
TOLERANCES UNLESS OTHERWISE SPECIFIED:		APVD	24JUN2013	R.P	
0. PLC	± -	NAME			
1. PLC	± -	CAP.3 CIRCUIT, UNIVERSAL MATE-N-LOK™			
2. PLC	± 0.13	PRODUCT SPEC			
3. PLC	± -	APPLICATION SPEC			
4. PLC	± -	SIZE			
ANGLES	± 1°	CASE CODE			
MATERIAL	SEE TABLE	WEIGHT		DRAWING NO	
		A1		00779	
		C=2178474		RESTRICTED TO	
		CUSTOMER DRAWING		SCALE 4:1 SHEET 1 OF 1 REV A	